

MONTFORD

THE NEWSLETTER OF ASHEVILLE'S MOST HISTORIC NEIGHBORHOOD
Vol. 17 No. 5

MAY '12

MONTFORD'S NINTH ANNUAL MUSIC AND ARTS FESTIVAL, MAY 19

The Festival Needs Your Help *The Answer Is 100 Volunteers Plus 1 Genius*

Karen Kellow, Volunteer Coordinator

If that's the answer, then here's the question: What equation can determine how many volunteers it will take to make our 2012 Montford Music and Arts Festival the best ever?

Think of it this way: 100 Volunteers + 1 Genius = even greater success!

100 Volunteers

This is one of those "it takes a village" times. Last year, more than 50 neighbors pitched in to help on the day of the festival. This year, we'll need **100**. Why 100? We're growing dramatically in popularity and reputation. More arts and crafts. More food. More music. More visitors. Becoming even greater takes more volunteers. If you have only come to past festivals to enjoy yourself, please understand that by volunteering for a short 2-3 hour shift you can be part of the success equation.

We'll need 100 neighbors, friends of neighbors, friends of friends of neighbors even if they don't live in Montford, relatives you like or even don't like, and . . . you get the picture.

SignUpGenius.com

Here's the catalyst in our equation: how to sign up. This year we're using a simple electronic method. That's the genius part. Simply go to **SignUpGenius.com**.

This website allows volunteers to see all the time slots that need to be filled during the day and the various roles we need for volunteers. You can simply log on, put in your desired time and role, and SignUpGenius.com will send you reminder notices.

Here's how to use SignUpGenius. It should be live as of Monday, April 30.

1. Go to www.signupgenius.com.
2. At the top of the web page, click the tab labeled Find a Sign Up.
3. Enter cpabanker@yahoo.com in the open box, and click search.
4. Click the link to 2012 Montford Arts Festival and sign up for your area of interest.
5. Remember to put in your **cell phone number** and **t-shirt size** (you get one free—see the story on page 4).

You can also volunteer the old-fashioned way by contacting me at karen@dn1.com.

continued on page 15...



Montford's New Polling Place Is William Randolph School

***Vote May 8 on Amendment One
and Primary Candidates***

Joe Newman

If you live in Montford and are registered to vote with your Montford address, William Randolph School, 90 Montford Avenue (next to the Chamber of Commerce), is your new polling place.

continued on page 15...

Greenway Fundraising Moves Ahead

Ron Phillips, Fundraising Coordinator

Our fundraising effort to raise money for completion of the Reed Creek Greenway between Catawba Street and W.T. Weaver Boulevard is still going strong. To date we have received almost \$5,000 in individual and business donations. A list of new contributors can be found at the end of this article.

Businesses that have shown a strong commitment since the April newsletter include Liberty Bikes and Wedge Brewery. Thanks again to everyone who is playing a meaningful role in the completion of this important project.

continued on page 14...



Two Stages of Music and Dance! Tasty Food and Drink! Arts, Crafts,

Montford Stage Lineup

Ben Scales, Festival Co-Director

11:00 a.m.— Kon Tiki.

Tropical lounge swing. The band is Lin Llewellen on ukulele, Russ Wilson on drums, Hank Bones on guitar and lap steel, and Henry Westmoreland on tuba. Described as “Sailing the South Seas (on a Balsa log Raft),” the band features the soulful crooning of Wilson and Bones set against the sweet wahine vocals of Llewellen. www.myspace.com/kontikimusic



12:15 p.m.—Ira Bernstein and John Herrmann.

Ira is a world-class percussive step dancer and one of the co-founders of the Montford Festival. As in years past, he'll be joined for this performance by John, the legendary Zen Master of Old-Time, on fiddle, banjo, and guitar, and other musicians for a classic set of music and dance celebrating the rich traditions of the Southern Appalachians, plus, maybe, another special guest or two. www.tentoepercussion.com



1:15 p.m.— David Holt and the Lightning Bolts with Reggie Harris.

For over three decades, David's passion for traditional music and culture has fueled a successful performing and recording career. He has earned four Grammy Awards and performed and recorded with many of his mentors including Doc Watson, Grandpa Jones, Bill Monroe, Earl Scruggs, Roy Acuff, and Chet Atkins. www.davidholt.com



2:30 p.m.—Buncombe Turnpike. Buncombe Turnpike plays a variety of heartfelt tunes ranging from traditional and contemporary bluegrass to gospel and hand crafted originals.

With their crowd pleasing demeanor, seasoned musicianship, and powerful vocals, the band has made a name for itself among traditional and contemporary listeners alike. www.buncombeturnpike.com



3:45 p.m.— Snake Oil Medicine Show.

Fronted by former Montford resident Caroline Pond, the Snake Oil Medicine Show is an eclectic and fun mix of bluegrass, jazz, reggae, and dance grooves from all over the world. Being based in the NC Mountains gives their music a hillbilly undertone, but travels to Europe and Jamaica have greatly influenced their music. www.reverbNation.com/snakeoilmedicineshow



5:00 p.m.—Free Flow Band.

Making their return to the Montford Festival after last year's successful debut is this trio of performers with their unique brand of “Old Skool R&B and Funk.” Percussionist and lead singer Roger “Lil’ Rog” Ware, keyboard player Kevin “Kazual” Collins sharing lead vocals, and Darrell “BNote” Griffin on bass and vocals will take you to a place they like to call Planet Funk. www.freeflowband.info



6:15 p.m.— WestSound.

The sensation of the past three years' festivals, WestSound will once again rock the avenue with high-energy Motown, blues, R&B, and soul that had everybody humming, singing, and dancing. Don't miss them! www.facebook.com/pages/WestSound/215017765645?v=info



Please Leave Your Pets at Home

Sharon Fahrer



Although just about everybody in Montford loves animals, and most of us have pets, many festival-goers may be surprised to learn that the City of Asheville prohibits pets and other animals from being present at outdoor special events. To comply with public safety and health guidelines, events must restrict attendees from bringing any animals into the event site. The only exceptions are animals who assist people with visual, auditory, or mobility impairments.

So please leave your pets at home. If your dog accompanies you to the festival site anyway, despite this advance notice, we'll ask you to check your canine friend into Brother Wolf Doggie Daycare for \$5 an hour with a two-hour maximum stay.

Thanks for understanding, and we'll see you at the festival.

Between Musical Acts on the Montford Stage

We'll be entertained by **Asheville Shakesperience**, the professional touring company of the Montford Park Players, Morris dancing from **Asheville Morris Men** and **Ashgrove Garland**, including a Maypole celebration, and the return of the **Mountain Lion Chinese Dragon Dancers**. Plus, there'll be surprise performers, and a special guest MC or two.

Plants, Nonprofits, and Kids' Activities! Family Friendly Fun All Day!

Soco Stage Lineup

Dave Baker, Soco Stage Coordinator

10:00 a.m.—Evergreen EMBE Marimba Band. This group of twelve-to-fourteen year olds from Evergreen Community Charter School performs primarily on hand-made Zimbabwean style marimbas as well as a variety of other percussion instruments. EMBE, a Swahili word for mango, also stands for Evergreen Multicultural Beat Ensemble, whose purpose is to explore music from around the world. www.evergreencs.org



11:00 a.m.—Dub Kartel. This band is a seven-piece instrumental reggae act from Asheville. Formed in 2010 from members of Shining Rock, "The Farm"-based funk band Strut, and Common Foundation, Dub Kartel makes music that will make you dance away your worries. www.facebook.com/pages/Dub-Kartel/170159459714894



Noon—BitterSweet. Wanda Newman's bluesy vocals and straight-ahead piano blend with Joe Newman's mellow voice and acoustic guitar. BitterSweet entertains with blues and rock hits, from Roberta Flack to Adele, mixed with gems that are 'way too cool ever to make the Top 40. www.facebook.com/BitterSweetAsheville



1:00 p.m.—The Secret B Sides. "We all knew about the Secret B-Sides way back when . . . But when the local old-school-meets-new-school soul/funk/R&B outfit dropped its sophomore album *Flowers & Chocolate* earlier this year, those sultry, sweaty, swag-gering sounds hit just the right note." Alli Marshall, *Mountain Xpress*. www.thesecretb-sides.com



2:00 p.m.—The Judas Horse. The Judas Horse has been referred to by one reviewer as "slow core" with a mix of folk band and dance-able post-punk, while another reviewer has said, "the trio has carved a niche in a style full of emotions with the ability to allow the creation of a sound . . . full of charm and never too cloying but making a direct contact with the listener's imagination." The Judas Horse performs after their Southern Regional Tour and release of their new vinyl and digital *Holy War*. www.thejudashorse.homestead.com



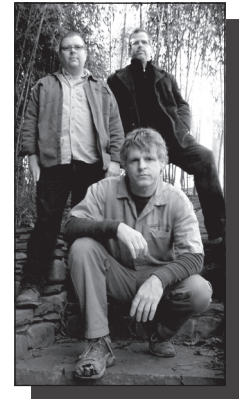
3:00 p.m.—Lyric. Pop, rock, funk. With the standout voice of Leeda Jones, Lyric is a group made up of natural talents that will take you to a place you can't forget, a group that uses music as an expression of pain, joys, and hope. This street team is a born replica of the legends that created movements. reverbNation.com/lyricfans



4:00 p.m.—Jahman Brahman. Shred 'N' Flow is how Jahman Brahman describes their unique style, meaning dynamic sound with a wide breadth of influence but a focus on rich and fluid progressions of energy. From classic rock to electronica to punk to jazz, elements from many genres are found in the band's music as it unfolds into powerful jams and creative compositions. www.jahmanbrahman.com



5:00 p.m.—Pick Your Switch. "Twangy, driving Americana . . . [Paul] Edelman and his three-piece band Pick Your Switch (featuring Dave Baker on bass and vocal harmonies and Elzy Lindsey on drums) . . . may get loud and raucous, but there's always careful attention given to melody and storytelling." Laura Blackley, *Take5/Citizen-Times*. www.pickyourswitch.com



6:00 p.m.—The Swayback Sisters. The Swayback Sisters are a close-harmony, country-soul trio based out of Asheville and comprised of Laura Blackley, Cary Fridley, and Mary Ellen Bush. Their music pays loving homage to the likes of Bessie Smith, Ola Belle Reed, and Memphis Minnie, and their live shows bridge the past and future, with one foot firmly planted in the here and now. www.reverbNation.com/theswaybacksisters



What a party we're going to have on May 19

It promises to be our best festival yet. Join the fun along our tree-shaded streets as residents, guests, and visitors celebrate the return of spring to our historic neighborhood.

Sharon Fahrer, Festival Co-Director

MONTFORD'S NINTH ANNUAL MUSIC AND ARTS FESTIVAL
Saturday, May 19

CALENDAR

Montford Neighborhood Association Meetings:

- Third Tuesday of every month, Montford Community Center, Pearson Drive.
- Next meeting: Tuesday, May 15, 2012, 7:00 p.m. with election of officers and at-large board members. All residents are welcome! Everyone in Montford is a member of the neighborhood association.

Ninth Annual Montford Music and Arts Festival:

- Saturday, May 19, Montford Avenue and Soco Street, family friendly fun all day.
- LaZoom bus tour with proceeds to the festival, Sunday, June 3, 6:30-8:30 p.m., tickets at www.montford.org.

Amendment One Referendum and Primary Elections:

- Tuesday, May 8. Montford residents vote at William Randolph School, 90 Montford Avenue.

Montford Farmers Market:

- Now open for the season, Wednesdays, 2:00-6:00 p.m., lower parking lot, Chamber of Commerce building, 36 Montford Avenue.

Montford Park Players:

- Outdoor season begins with *The Complete Works of William Shakespeare (Abridged)—Apocalypse Now*—May 10-26, Thursdays-Sundays, Hazel Robinson Amphitheatre behind Montford Community Center. Buy tickets at montfordparkplayers.org
- Free season opens with *Much Ado about Nothing*, June 1-23, Fridays-Sundays, Hazel Robinson Amphitheatre. For more information contact John Russell at 254-5146 or john.russell@montfordparkplayers.org.

Montford Community Center Activities:

- Second Annual Spring Fling Youth Dance, Friday, May 11, 6:00-9:00 p.m., \$5.00.
- Last Fun Day Out, Monday, May 28 (Memorial Day), 9:00 a.m.-5:30 p.m., \$5.00. Preregister by May 23.
- Summer Playground Program for rising first-sixth graders, June 11-August 9, 9:00 a.m.-5:30 p.m. Preregistration required. Program fills quickly—contact the center soon.
- Comedy improv class for adults and youth 6 and over, second and fourth Wednesdays, 6:30-7:30 p.m., \$1 per class.
- Adult yoga, Tuesdays and Thursdays, 8:00-9:00 a.m., bring your mat, free.
- Martial arts, Tuesdays and Wednesdays, 7:00-8:00 p.m., \$10 per class.
- Badminton and table tennis, Tuesdays and Thursdays, 5:30-8:00 p.m., free.
- Juggling, Tuesdays and Thursdays, 6:00-8:00 p.m., free.
- Adult basketball, Wednesdays, 6:00-8:00 p.m., free. Contact Kim Kennedy at 253-3714 or montfordr@ashevillenc.gov.

How to Contact the Historic Resources Commission (HRC)

- Stacy Merten, Director, Asheville City Building, 259-5836 or smerten@ashevillenc.gov.

Montford Neighborhood Website

- Visit Montford's informative and user friendly website www.montford.org.
- Contact webmaster Laura Lowe at webmaster@montford.org.

Montford List Serve

- Go to www.montford.org and click on Join the Montford List Serve.

Streets Will Close during the Festival, Saturday, May 19

- Montford Avenue between Cullowhee Street and West Waneta Street
- Cullowhee Street between Montford Avenue and Cumberland Avenue
- East Waneta Street • Soco Street

All will close at 7:00 a.m. on Saturday and reopen by 10:00 p.m. No driveways will be blocked in the event of an emergency. Please remove any vehicles parked on the street no later than 7:00 a.m. on Saturday.

Get Your Festival Souvenirs Right Here!

Advance Purchases at Montfordfestival.org

Jerry Conner

This year's festival souvenirs are here, and your advance purchase will help fund the event. Here's your chance to support the music and arts festival and show your Montford pride at the same time.



Colorful logo **T-Shirts** in a city green color, sizes S -XL, \$15.00

Forest green, 100% recycled material logo **Tote Bag**, \$3.00

2012 limited edition **Festival Poster** by Hand-Cranked Letterpress, \$10.00

Large hand-thrown 20 ounce **Montford Pottery Mug** by local artist Sue Hintz, \$25.00

Tickets for **LaZoom Montford Comedy Tour** on June 3, \$25.00

Special 20-page **Festival Souvenir Program** with complete music listing and schedule, pictorial of Montford neighborhood and past festivals, \$1.00

You can go to the festival website, montfordfestival.org, to make advance purchases and pick up your selections in advance or at the festival booth. A free Festival Souvenir Program will accompany all advance purchases.



Chinese Acupuncture & Herbology Clinic

Asheville, Hendersonville, Waynesville, NC

828.258.9016

ashevilliacupuncture.com

SQUARE PEG

We're Different



828-277-5164

FINISH CARPENTRY
CABINETS
DESIGN



Asheville



SMART
FELLER
TREEWORKS, LLC

Ira Friedrichs, OWNER
New# ► 828.545.5503
irafriedrichs@gmail.com
smartfeller-treeworks.com

The Generosity of Festival Sponsors Just Keeps Growing

Daphne Young, Fundraiser-in-Chief

Our heartfelt thanks goes out to all of our new sponsors and donors as well as those who have supported our festival over the years. Dave Baker and I present to you this mighty fine list of businesses and individuals who are making this festival possible and keeping it free to the public.



Individual Donors:

• John Fragale • Brian May • Valerie Marott • Parrish Rhodes

Business Sponsors:

Commitments for April

1-800-Got-Junk—989-7006, David.Pennebaker@1800gotjunk.com

Asheville on Bikes—216-3584, ashevilleonbikes.com

“Asheville on Bikes cultivates the culture of commuting and urban cycling within our city through celebration and advocacy. We believe bicycling has a direct impact on the health of our community.”

City of Asheville, Department of Parks, Recreation and Cultural Arts—70 Court Plaza, Asheville, NC 28801, 259-5800, www.ashevilenc.gov

Harmony Interiors—235 Montford Avenue, Asheville, NC 28801, 250-9800 ext. 1111, www.harmonyinteriors.com

“The Aesthetic Approach to Technology. Harmony Interiors combines engineering with interior design to create alternative solutions to ugly speakers and difficult electronics. We design, sell, and install audio and video systems that preserve the historic integrity of your home.”

Harmony Motors—621 Brevard Road, Asheville, NC 28806, 232-4000, www.harmonymotors.us

Montford Walk-In Bakery—305 Westover Drive, Asheville, NC 28801, 252-6816, www.montfordwibakery.com

“The Montford Walk-In Bakery is a small, in-home, pre-order bakery designed to serve the Montford neighborhood and beyond. Featuring naturally leavened breads and other baked goods. Jennifer Thomas also enjoys teaching baking and cooking to children and adults.”

TD Bank, (888)751-9000, www.tdbank.com

The Spice and Tea Exchange of Asheville—46 Haywood Street, Suite 101, Asheville, NC 28801, 505-7348, www.spiceandtea.com

“Located in downtown Asheville just footsteps away from the Civic Center. At The Spice and Tea Exchange, you will find spices from around the globe, hand-mixed custom blends, exceptional sea salts, unique and exotic fine teas, naturally flavored sugars, gifts, and accessories. Now featuring culinary cooking classes. Come in and smell the spices!”

Commitments for January-March

A Bed of Roses, Victorian Bed & Breakfast—135 Cumberland Avenue, Asheville, NC 28801, 258-8700 or toll free (888) 290-2770, www.abedofroses.com

All Kids Pediatrics—131 McDowell Street, Suite 100, Asheville, NC 28801, 350-KIDS (5437), www.allkidspediatrics.com

Bionic Man Painting Company—215-7772, pdixon@yahoo.com

Chinese Acupuncture and Herbology Clinic—369 Montford Avenue,

Asheville, NC 28801, 258-9016, www.ashevilleacupuncture.com

Fired Up! Creative Lounge—Two locations: 26 Wall Street, Asheville, NC 28801, 253-8181, and 321B North Main Street, Hendersonville, NC 28792 698-9960, www.fireduplounge.com

Gray Line Trolley Tours of Asheville—Box 2115, Asheville, NC, 28802, 251-TOUR (8687), www.GrayLineAsheville.com

Greenlife Grocery—70 Merrimon Avenue, Asheville, NC 28801, 254-5440, www.wholefoodmarkets.com

Grove Arcade—One Page Avenue, Asheville, NC 28801, 252-7799, www.grove-arcade.com

LaZoom Tour Company—90 Biltmore Avenue, Asheville, NC 28801, 225-6932, www.lazoomtours.com

Lenoir – Rhyne University Center for Graduate Studies of Asheville—36 Montford Avenue, Asheville, NC 28801, (855) 232-4723, www.asheville.lr.edu

Mountain Song Guitars—Candler, NC 28715, 665-0505, www.facebook.com/MountainSongGuitars

Nine Mile Restaurant—233 Montford Avenue, Asheville, NC 28801, 505-3121, www.ninemileasheville.com

98.1 The River—1190 Patton Avenue, Asheville, NC 28806, 259-9695, www.981theriver.com

PLI – Plasticard – Locktech International—605 Sweeten Creek Industrial Park, Asheville, NC, 28803, 210-4754 or toll free (800) 752-1017, www.plicards.com

Progress Energy—555A Brevard Road, Asheville, NC 28806, (800) 452-2777 – Customer Service, (800) 419-6356 – Power Outages, www.progress-energy.com

The New Classical Academy—38 Stoney Knob Road, Weaverville, NC 28787, 658-8317, www.thenewclassicalacademy.org

Trout Insurance—279-4681, www.TroutInsurance.biz

VegHeads—705 Merrimon Avenue, Asheville, NC 28801, 505-8540

Contact me, Daphne Young, at 254-0690 if you need additional information or to pledge your support.

All proceeds from the Montford Music and Arts Festival help fund the community projects and activities of the Montford Neighborhood Association.

Get on the Bus!

LaZoom Tour Will Roll to Benefit the Music and Arts Festival

Sharon Fahrner, Festival Co-Director

Laugh your Asheville off for a good cause on the funniest tour of the city. Join us Sunday, June 3, from 6:30-8:30 p.m. The tour departs the lower parking lot of the Asheville Visitor Center behind the Chamber of Commerce building on Montford Avenue.



The cost is only \$25.25 per person, with complimentary beer and wine. LaZoom Tour will donate all proceeds to the Montford Music and Arts Festival. Tickets are for sale now on at montford.org. Just click on the LaZoom banner in the left column and follow the normal checkout process.

All the skits will be new, so get on the bus again even if you took the tour last year. You'll get a different perspective of Asheville. It'll be a blast!

The Montford Houses of Tizdale and Sarah Linn

Part 2: An Apartment House

Zoe Rhine, North Carolina Room, Pack Memorial Library

The Linns Become Real Estate Investors

Soon after Dr. Linn finished paying for his home at 129 Cumberland Avenue, he began saving to invest in more land. In 1898 Dr. and Mrs. Linn found and purchased a large double lot on West Chestnut Street, a half block away from the Linns' home, with the intent of building an apartment house. Richard Sharp Smith was again selected to draw the plans for the frame building.

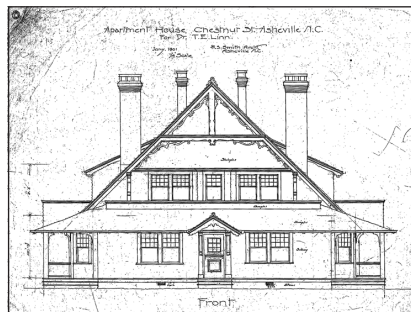
Shown at right, consisted of three large apartments with separate entrances, private porches, and separate street numbers – 126, 128, and 130 West Chestnut. "The upper part of the building had shingles stained dark green, while the lower portion of the building was pebbledashed in natural color," their daughter Peggy Linn Pritchard wrote. "The apartment house was architecturally beautiful."

She also noted that Mrs. Linn "had arupilopsis vines planted so that they would extend upward on the pebbledashed lower part of the building. The effect of the vines and clumps of small hemlocks was attractive the year around. The apartment building served tenants faithfully for about half a century."

The last listing in the Asheville city directory for this building is 1944, and it appears that the site remained an empty lot until the recent construction of a home. No known photograph of this building exists.

"Flats" Ahead of Their Time

The interesting thing about the Linn apartment house is the fact that it was built before apartment houses were common in Asheville. Though fashionable in New York in the late 1800s, apartment buildings, initially called "flats,"



were not considered "architecturally beautiful" and were shunned in the South. They didn't really take hold in Asheville until the 1920s, when there was a big push by city officials and businessmen for housing to help accommodate the rapid influx of people.

The first Asheville city directory that listed "Apartments" as a subject heading was 1913, and at that time there was only one listed, Hull's Flats, which interestingly was also in Montford, located at 80-82 Cumberland. It was not until 1916 that more than one apartment house was listed under this heading.

The 1920s growth of apartment houses holds true in Montford as throughout the rest of the city, with development of the Francis (1926), the Cumberland (1927), and the Colonial (1927), all on Cumberland Street; the Ambassador (1926) on Pearson Drive; and the Jefferson (1928), Grace (1928), and Maxey Apartments (1927), all on West Chestnut.

In this, as in many other ways, Dr. and Mrs. Linn were ahead of their time. Their contributions to Montford's development, long forgotten, should at last be recognized.

Information from The Peggy Linn Pritchard Collection, MS107, North Carolina Collection, Pack Memorial Library. Peggy was the daughter of T.S. and Sarah Linn. Also see "Turning Back the Pages" by Lynda McDaniel in Downtown: The Heart of Asheville (April-May 1994). Architectural drawing (#RS0351.1) courtesy of Asheville Art Museum.

Plumber

over 25 years experience
I return calls. I show up.

Steve Heflin 335-4005



All Kids Pediatrics
Dr. Morgan Dr. Carlisle Dr. Vo Dr. Pulver

131 McDowell St. Suite 100
Asheville, NC 28801

(828)350-5437
(828)350-1125

www.allkidspediatrics.com










Dr. Lillian Thomas
CHIROPRACTOR

Lillian.Thomas@gmail.com
www.dr.lillianschiropractic.com

438 Montford Ave.
Asheville, NC 28801

Office: 828-252-7223
Cell: 828-226-6965
Fax: 828-236-0340

Gentle Chiropractic Care for all.

mantis gardens

creating beautiful, sustainable environments



landscape design,
installation and maintenance

E.V. vonSeldeneck
mantisgardens.com

828.582.0016
ev@mantisgardens.com

Wildflowers & Plants Presentation at Montford Books & More

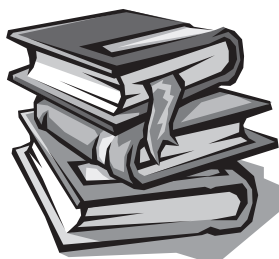
Join us for another lively & informative presentation by noted botanist, plant ecologist and author, Tim Spira. Learn about our native flowers, how they interact with each other, and how animals contribute.

Fri., May 25 • 7 p.m.
31 Montford Ave. 828.285.8805

Little Free Library Comes to the Community Garden

Take a look at the **Little Free Library** in the Community Garden on Montford Avenue.

Parrish Rhodes found it online, ordered it, and with help from Leslie Humphrey in the woodshop at Square Peg, performed intense scraping, sanding, staining, finishing, and refinishing (phew!). We'll install it by the time you read this, and we hope all our Montford neighbors will enjoy it and use it.



It's a **take-a-book, leave-a-book**, totally free enterprise! Visit the original website at www.littlefreelibrary.org. Let's hope this idea will spread to other areas of our town.



R. Matthew Martin (Owner / Designer)
(828) 242-8879

matthew@appalachianenvironmentsinc.com
www.appenvironments.com

Appalachian Environments, Inc. is a full service landscape design and installation company focusing on sustainable gardening. We balance our ornamental aspect of gardening by incorporating natives and edibles throughout the landscape. We pride ourselves in the best quality work, customer service and punctuality. Appalachian Environments, Inc. can provide the following: Landscape Design, Landscape Installation, Hardscape Installation and Garden Maintenance

Licensed and Insured



Asheville Catholic School

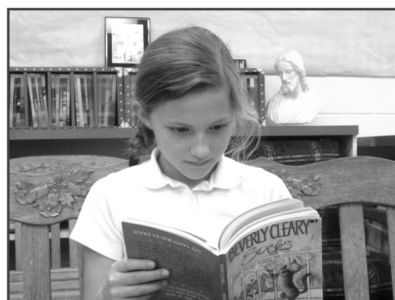
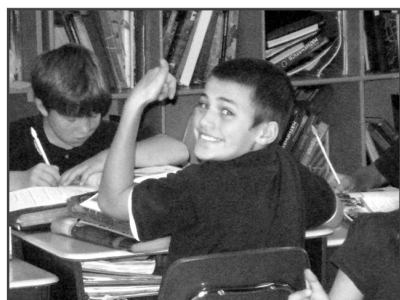
Asheville Catholic School Winter and Spring Open Houses:

THE FIRST TUESDAY OF EACH MONTH.

Pre-K- 8th , 10:00-11:30, April 3rd, May 1st, and June 5th

All open houses are held at Asheville Catholic School, 12 Culvert Street

Call Debbie Mowrey at 252.7896 or email her at dmowrey@ashevillecatholic.org for a personal tour.



For more information or to schedule a tour, visit www.ashevillecatholic.org or call (828)252-7896. Asheville Catholic School follows North Carolina curricular guidelines and is fully accredited by SACS. All Faiths Welcome.

12 Culvern St. Asheville, NC 28804



Funky Muff

A Tiny Shop With a Big Attitude
30 N Lexington Ave, Asheville ☎ 828-253-0080

jernigan design studios.com
BRYAN JERNIGAN
828-989-0034



Get organized this year with built in shelving and cabinetry. Nothing adds the personal touch like custom built Ins.

YOUR LOCAL CRAFTSMAN FOR TRIM CABINETRY AND SHELVING.

Most major credit cards accepted.

TEN MILE FARM

Have you participated in a CSA in the past and found yourself with too much of one item, not enough of another, wasting food or giving it away?

Shop for your CSA share at your Montford Farmers Market!



Ten Mile Farm offers a more flexible solution, A Market Style CSA share.

You get to shop for what you want each week!

Check out our website for more details about our CSA, and about us.

www.tenmilefarm-nc.com



Green Corner

Keep Skeeters at Bay the Green Way

Mitch Russell

Our winter was nonexistent for the most part, and despite our late-April freeze scare, I think we're in for a muggy, buggy summer. Hope I'm wrong about either or both, but in case I'm not, this month I've decided to suggest some greener and safer insect solutions that may help you enjoy the great outdoors this summer.



We can take several actions to reduce mosquitoes. The most cost effective is to empty water that has collected in containers including watering cans. Other likely suspects are pots, citronella candle buckets, kids' toys, gutters full of wet leaves and standing water, bird baths, and pet water bowls. Make sure to dump containers every five days or so and check for wriggly mosquito larvae, who must live in water for 7-14 days to progress to their next stage, pupa, before finally emerging as adults. Your citronella candle can work wonders in specific areas such as porches and decks.

More aggressive and less budget-minded options include Mosquito Dunks and Mosquito Bits. The active ingredient is *Bacillus thuringiensis israelensis* (Bti), a bacterium commonly found in soil. The bacterium is toxic to mosquitoes but not to humans, pets, wildlife, and generally beneficial insects such as lady bugs and praying mantises. There is some dispute about toxicity to caterpillars.

Readily available at hardware stores, the dunks can be placed in any location where water collects, such as rain barrels, watering cans, and bird baths. The bits can be sprinkled in ground covers.

Electronic mosquito zappers and repellers that are solar, run on batteries, or can be plugged into an outlet are another, although less-green, option.



Healing Roots Design
Design. Install. Educate. Heal.

Keri Evjy
Licensed & Insured
828.450.1836
healingrootsdesign.com
keri@healingrootsdesign.com

Ecological Landscape and Herbal Consultations,
Holistic Garden Design & Care, and Education



3CHIX™
UPHOLSTERY SERVICES

Rachael Jernigan
828-989-5589

3chixupholstery@gmail.com
http://3chixantiques.blogspot.com

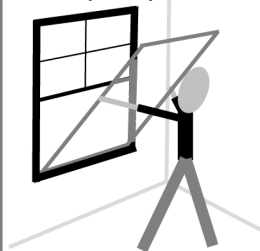
Help! Please complete our online Window Efficiency Survey

Just go to our website below, click the survey link and answer the questions!

Financing now Available
(through Springleaf Financial)

Sliding Insert now Available
(Open double-hung windows without removing insert)

Acrylic Window Inserts can match the Efficiency of Replacement Windows



Window Efficiency Works!

Locally Owned & Operated
828-333-4965

WindowEfficiencyWorks.com



Ballet Conservatory
of ASHEVILLE



SEE Our **SPRING BALLET**
'La Fille mal gardee'

Angie Lynn, Director

June 1 - 2
Diana Wortham

SUMMER WORKSHOPS & CLASSES
Ballet • Modern • Jazz • Tap • Musical Theatre

255-5777 6 E. Chestnut Street
BalletConservatoryofAsheville.com

A Tree Grows in Montford Park in Memory of Irma Cantor

Sharon and Vic Fahrer recently gathered with friends to plant a tree in Montford Park to honor the life of Irma Cantor, Sharon's mother. Asheville Greenworks arranged everything necessary for the tree planting.

Although the gathering took place on a rainy afternoon, the experience was uplifting. Family and friends swapped amusing stories about Irma and how much she liked her Montford neighbors. It was a great way to remember a former resident of our neighborhood.



WORKING TOGETHER FOR A COMMON GOAL



Investing in a shared future... We proudly support events that bring our community together.

Making a Difference Together



America's Most Convenient Bank®

1-888-751-9000 | www.tdbank.com

Member FDIC TD Bank, N.A.

gift mom the best



70 Merrimon Ave | 828.254.5440 | wholefoodsmarket.com

Montford Community Center News

Kim Kennedy, Center Director

Thanks to everyone who came to the **Montford Easter Egg Hunt** on Saturday, April 7. The event was a success with over 100 youth and parents turning out to hunt for eggs.



Calling all youth in grades K-5. Come and get your groove on at the **Second Annual Spring Fling Youth Dance** on Friday, May 11, from 6:00-9:00 p.m. Bring your dancing shoes and your best dance moves and enjoy a variety of up-to-date music. Your \$5 donation includes a slice of pizza, chips, cookies, drink, and raffle ticket. Miscellaneous \$1 items will be available for purchase.

The last **Fun Day Out** will be held on Monday, May 28 (Memorial Day), from 9:00 a.m.-5:30 p.m. The cost is \$5, and youth need to bring a lunch and drink. Preregistration is required by Wednesday, May 23.

The **Montford Playground Program** is a great place for your child to have some fun this summer. The program meets weekdays, June 11-August 9, from 9:00 a.m.-5:30 p.m. and provides a full day of activities for your rising first to fifth-grade child. The cost for city residents for session I is \$175 (for 4 weeks) and for session II is \$210 (for 5 weeks). The cost includes most field trips and a camp t-shirt. Youth need to bring a lunch, drink, and snack daily. Preregistration is required. Don't wait—this program will fill quickly.

Mark your calendar for this year's **Hot August Night 5K** to be held on Saturday, August 18, at 7:00 p.m.

Feel free to contact me at 253-3714 or montfordr@ashevilenc.gov.



The 2012 Montford Park Easter Egg Hunt—a success once again!

The Complete Works of William Shakespeare (Abridged)—Apocalypse Now

Montford Park Players' Outdoor Season Opener
 May 10-26, Thursdays-Sundays, 7:30 p.m.
 Tickets at montfordparkplayers.org

Resource Directory

Advertise in the Resource Directory—The monthly rate is only \$10.00
 Send a brief description (30 words or less) and contact information. **More than 1,500 newsletters** are distributed monthly throughout the neighborhood and are also available on the **Montford website** and at the Pack Memorial and North Asheville Public Libraries. Call 258-2207 for more information.

House Histories

Learn the story of your house. Who lived there, who owned it and what they did for a living.

- For more information call Sharon at 777-1014

Historic Walking Tours

For by-appointment walking tours of historic Montford, Riverside Cemetery, and downtown Asheville, call 828-777-1014. A self-guided CD or downloaded MP3 tour of Riverside Cemetery is available online at www.history-at-hand.com Cemetery tour CDs are also available at the Chamber of Commerce Visitors Center or by calling the number above.

Astrology & Shamanic Healing in Montford

• 828-338-9852 • info@ItsAllGoodAstrology.com • www.ItsAllGoodAstrology.com
 Benjamin Bernstein provides astrological insights into soul purpose, career, money, relationships, spirituality, timing, relocation and more—plus shamanic healing for healing and spiritual awakening. Compassionate, professional, positive. Satisfaction guaranteed!

Daoist Traditions College of Chinese Medical Arts

• 382 Montford Avenue • 225-3993 (school) • 253-8669 (student clinic)
 • www.daoisttraditions.com

Low cost acupuncture care at our student acupuncture clinic. Call for more information.

Hansen Stiles And Associates

• 117 Cherry St • Asheville, NC 28801 • (828) 255-5227
 Montford Residents Investment Company on Cherry Street—Financial Planning Consultants, Investment Securities

Laura the Bookkeeper

• Contact Laura at lauraBookkeeper@gmail.com or 828-776-6710.
 15 years of bookkeeping experience and 10 years of QuickBooks experience. Have references.

Wildflowers Return to Montford Books & More

• 31 Montford Ave. • 828-285-8805 • www.montfordbooks.com
 It was a full house last year for botanist Tim Spira's lively presentation about wildflowers and plants in our area. He's back Fri., May 25, 7 p.m. More information in ad.

Montford Yoga Teacher

• Lewis Rothlein • 505-7332 • ashtangaguy@aol.com • www.ashtangaasheville.com
 For inner calm and fitness. Montford yoga teacher with fifteen years experience will bring you yoga tailored to who you are. Certified. References available. My home or yours.

Smart Feller Tree Works

• Ira Friedrichs • 828-545-5503 (NEW cell) • irafriedrichs@gmail.com
 Down trees got you down? Contact us for all your tree removal and pruning needs! We are locally licensed and insured. Please call for free estimates. Montford references available. Thanks.

Window and Gutter Cleaning

• Call Mountain View Cleaning at 271-4991. Free Estimates.
 We specialize in houses up to three stories. Windows are thoroughly cleaned, including screens, tracks and sills. Roof gutter and light fixture cleaning is also available.

Square Peg Construction Inc.

Add beautiful custom woodwork to your historic home: New upgrades like wood paneling, built-in cabinetry, trim, doors, stairs and railings. Small details add big impact! Montford references.
 • Call your neighbors, Leslie and David Humphrey 277-5164

YWCA Club W Fitness Center & Programs for Children

• 185 S. French Broad Ave. • 254-7206 • www.ywcofasheville.org
 The YWCA of Asheville is home to the Club W Fitness Center. We offer swim lessons in our solar-heated pool. Our Child Care Center, After-School and Summer Camp are 5-Star licensed programs.

Montford Neighborhood Association News

Pam Brown for Bill Wheeler, Secretary

The regular monthly meeting was called to order on March 20, 2012, in the Montford Community Center on Pearson Drive by President David Patterson. Other board members present: at-large members Joe Newman, Pam Jo Brown, and Sharon Fahrner. Attending from the Asheville Police Department were Chief of Police William Anderson, Captains Benson, Splain, and Wood, Lieutenants Welch and Wilke, Detective Rikard, and Community Resource Officers (CROs) Jeremy Woody and Brian Griffen. Also present were several other neighbors and *Asheville Citizen-Times* reporter Romando Dixon.

MNA Financials

Joe Newman reported on behalf of Treasurer Wanda Newman. The treasury remains strong reflecting contributions to the Montford Music and Arts Festival from sponsors and vendors. Joe stated that Reed Creek Greeway donations to date were almost \$5,000 and reminded those present that the MNA has committed to match total donations up to \$6,000.

Safety and Security

CRO Jeremy Woody reported that in the past month there have been two criminal incidents, both of which received media attention. The first was on March 20 when someone tried to rob the convenience store on Montford Avenue using a brick as a weapon. This person was identified from the surveillance camera footage and arrested on April 12. The second incident involved the drug bust of March 27 and its aftermath. Officer Woody then introduced Asheville's new Chief of Police, William Anderson.

Chief William Anderson Talks about Montford Drug Bust

Chief Anderson gave his first public comments on the cocaine sting and high-speed getaway to the Montford group. He explained that police internal investigations are continuing and stressed that the entire incident—from the time the alleged drug trafficker identified the police officers and began his reck-

less getaway attempt to the time he crashed at the sewerage work site, injuring three MSD workers—lasted about two minutes.

Chief Anderson stated that police officers did not engage in a pursuit by their definition. He believes that what people saw was police vehicles responding to scanner traffic about the rammed police vehicle and the crash. He also ensured the group that the police department had no control over the time and place of the bust — that police were responding to reports and tips they had received about a “large amount of drugs” being bought into the neighborhood. The chief said the internal investigation would take another week or two and stated, “We regret with a passion that anybody was injured in this particular case.” He then answered questions from the group.

UNCA Community Work Day at 525 Broadway

David Patterson reported on the March 31 Community Work Day. The results are evident to anyone who passes the site. About 30 Montford residents signed in that day to work with UNCA students and staff to clear the site of invasive species, plant new shrubs and trees, spread mulch, and give the site an overall clearing. Everyone was encouraged to walk or ride by and see the changes to the site.

Nominations for MNA Officers and Executive Board Members

See Bill Wheeler's article on this page for the names of the 2012-2013 nominees for MNA offices and at-large board seats.

Announcements

Clondyke Playground Project. David Patterson reported that the board members have approved the Asheville Design Center's \$1,500 funding request for the playground project with the funding to be disbursed in two payments: the first when the project work begins and the second when the project ends or is well into construction.

Montford/Culowhe/Soco Intersection. David reported that the city would return to the HRC meeting in May to review details of the work proposed to improve safety at the intersection. David said he planned to meet soon with Ken Putnam, director of the Transportation Department.

The meeting was adjourned.



A GRADUATE CENTER IS RISING IN ASHEVILLE.

Thinking about earning your master's degree? Get your degree in beautiful Asheville, NC! Coming in Fall 2012: Nine new graduate programs from Lenoir-Rhyne University.



asheville.lr.edu or call 855 232 4723

MNA Elections Set for Tuesday, May 15

Bill Wheeler, Secretary

The Montford Neighborhood Association will hold its annual election of officers and at-large board members at the May 15 meeting. Nominations were open through April 17 to all residents of the neighborhood.

David Patterson has been nominated for president, Michael McDonough for vice president, Brian Elston for secretary, and Susan Eggerton for treasurer. Each of these positions carries membership on the executive board. Nominees for at-large seats on the board are Pam Brown, Sharon Fahrner, Laura Lowe, Ellen Nutter, Joe Newman, Ron Phillips, and Daphne Young.

What Has the MNA Been Up To?


David Patterson, President, Montford Neighborhood Association

Another year comes to an end, and some neighbors may still be unaware of the many programs and activities the MNA supports through financial donations and countless hours of volunteer effort.

During the past year:

- The MNA reached out to the new owner of 525 Broadway, UNC Asheville. Several public meetings resulted in our first Community Work Day with UNCA students, faculty, and staff in an effort to clean up, plant, and mulch the once-blighted former Momentum site. If you haven't stopped by, check it out!
- Also regarding the 525 Broadway site, the MNA has joined with RiverLink in a fund-raising effort to complete the Reed Creek Greenway which runs through the property. The MNA has pledged to match up to \$6,000 of individual and business donations. To date we are over 80 percent of the way to meeting this initial goal.
- Each year the MNA commits funds to support activities at the Montford Community Center. These include the Easter egg hunt, children's area at the MMA festival, Halloween haunted house, holiday gift baskets, and contributions to help provide "scholarships" for after-school activities at the community center for those who cannot afford them.
- Every Halloween, the MNA hires extra police officers to increase safety and security. In addition, a Community Resource Officer attends most MNA meetings to report on neighborhood activity and collect community input.
- The MNA sponsors the annual Montford Tour of Homes. Proceeds from ticket sales help support our many activities.
- At a forum for City Council candidates sponsored by the MNA this past fall, residents got the opportunity to meet the candidates and compare their views.
- We produce the Montford Music and Arts Festival every spring. This FREE festival features live music acts, arts and crafts from local artists, and much more. Proceeds from fundraising and booth and entry fees help support MNA programs and activities.
- We recently approved funding to help Asheville Design Center design and build a playground in the Klondyke Homes complex. With other stakeholders and neighborhood input, Klondyke residents will help plan and build the new playground.
- This newsletter, published 10 times a year, brings vital information to our community. It is hand-delivered by more than 50 of your neighbors to every household in Montford. Advertising revenues from local businesses and residents pay for the production of the newsletter.

I'm sure I forgot a few things, but I hope you get the idea. The Montford Neighborhood Association does a LOT for Montford. Get involved! MNA elections are coming up (see the article on page 12), and we need your help to make it all happen.



Historic Resources Commission of Asheville and Buncombe County

April 11, 2012, Meeting—Action Agenda for Montford

Asheville City Building, First Floor North Conference Room, 4:00 p.m.
 Contact Stacy Merten: 259-5836 www.ashevilleenc.gov/business/development_services/planning_zoning/historic_dist/

Members present: Hillary Cole, Aaron Wilson, Capi Wampler, Ashley Black, Brian Cook, David Nutter, Tracey Rizzo, Brendan Ross
 Staff present: Stacy Merten, Peggy Gardner, Jannice Ashley

Item and Summary	Action
Cullowhee/Soco/Montford – pedestrian improvements to intersection.....	Continued to May meeting
155 Flint Street – construct new two-story, single-family residence.....	Approved with conditions
254 Pearson Drive – Add dormer to front elevation, add three skylights on sides and rear	Approved
63 Elizabeth Street – Add double garage with apartment above, reconfigure driveway	Approved with conditions
Bishop Place – Construct new two-story single family residence, Queen Anne style	Approved with conditions; arborist report to be reviewed at May meeting

Please refer to the website www.ashevilleenc.gov for the full approved minutes after each month's meeting.

May 9, 2012, Meeting—Tentative Agenda for Montford

Asheville City Building, First Floor North Conference Room, 4:00 p.m.

Old Business: Public Hearings—Certificates of Appropriateness

Cullowhee/Soco/Montford—pedestrian improvements to intersection
 Bishop Place—arborist's report for new construction

New Business: Public Hearings—Certificates of Appropriateness

308 Cumberland Avenue—retaining wall, after the fact
 Montford Avenue at Chamber of Commerce/Lenoir-Rhyne building—bus shelter

Other Business

Committee reports
 Comments from commissioners, public, and staff



GRASS TO GREENS

~Transforming yard space into beautiful and edible landscapes~

Edible landscaping design, consultation, installation, and maintenance services	Randal Pflieger 828-242-1094 randal@grass2greens.com
---	--

www.grass2greens.com




"The Lord is my strength and song, and is become my salvation." PSALMS 118:14

SAM'S RADIATOR SERVICE
and
AUTO / BRAKE SERVICE

133 Broadway • Asheville, NC 28801
Sam McAbee - Owner

Call Sam
(828) 252-5070

SOUTHERN Alarm & Security

Since 1936

- Security and Fire Systems
- Home Entertainment Systems
- Specialty Wiring
- Surveillance TV Systems
- Keyless Entry Systems



24-hour
Central Station Monitoring

Professional, Experienced Installations
Residential • Commercial • Industrial

828-253-1235

www.southernalarm.com

Contact: Montford resident Paul Falkner at 423-5404

Greenway

Continued from front page...

MNA Is Still Matching Donations

This puts us just \$1,000 shy of our initial goal of \$6,000. Remember, the Montford Neighborhood Association will match contributions up to a total of \$6,000. That means for every dollar you give (for the next \$1,000), \$2 will actually be contributed to the fund. We encourage donations in \$50 increments, the cost of a linear foot of the trail, whenever possible. But all donations are welcome. Contributions will be forwarded to RiverLink, which will send you a Deed of Support.

To donate, please visit our website at www.montford.org. Click on the RiverLink button on the left, and then you can donate via credit card. All transactions are handled securely through PayPal. If you would prefer to make your donations by check, just make it payable to Montford Neighborhood Association and be sure to indicate it is for the Greenway Project. Checks can be mailed to our Treasurer, Wanda Newman, at 28 Soco Street, Asheville, NC 28801.

Thanks to the Generous Neighbors Who Contributed in April:

Sylvia Robin, Bridgette Knauf, Richard and Phyllis Stiles, Alice Weldon, Jo and Kevin Hogan, Elwood Kloesel, and Ben Smith.

If you have any questions or fundraising ideas, please feel free to email me at rphillips4975@mac.com.

Thanks again Montford! It's great to see everyone come together for such a great cause.



Easy Lemon-Garlic Chicken Kabobs

INGREDIENTS:

- *12 (10") Wooden or stainless-steel skewers
- *2 Lbs. Boneless, skinless chicken breasts, cut into 1" chunks
- *4 large Red bell peppers, cut into 1" pieces
- *1 cup Olive oil (plus additional for coating grill)
- *5 Tbsp. Fresh lemon juice
- *1 tsp. Lemon zest, finely chopped
- *2 Tbsp. Garlic, roughly chopped
- *2-½ tsp. Dijon mustard
- *1-½ tsp. Tarragon leaves
- *Kosher salt and fresh ground black pepper, to taste
- *Lemon wedges (for garnish, optional)

DIRECTIONS:

STEP 1: If using wooden skewers, soak them in water for 10 minutes. STEP 2: Preheat grill on medium heat. STEP 3: Alternately thread chicken and peppers onto skewers. STEP 4: In a medium bowl, whisk together olive oil, lemon juice, lemon zest, garlic, mustard, tarragon and salt and pepper to taste; reserve 1/3 cup of olive oil mixture and set aside. STEP 5: Oil grill grates. Brush kabobs with some of the olive oil mixture and place on grill. STEP 6: Grill kabobs, basting frequently with olive oil mixture and rotating every 3-4 minutes, until chicken is cooked through, about 10-15 minutes, or until a thermometer inserted into chicken reads 165°. STEP 7: Remove from grill. Serve drizzled with reserved olive oil mixture over your favorite rice or couscous, garnished with lemon wedges, if desired.

The **ingles**
ADVANTAGE™



Festival Needs Your Help

Continued from front page...

We know Montford always has the coolest neighborhood music and arts festival in Asheville. Year after year, we manage to outdo ourselves. This year the buzz is even bigger and better. For six months a core team as been dedicated to creating our festival. *NOW IT'S YOUR TURN.*

Flexibility

We'll do our very best to work with your preferred time and roles. We'd also appreciate some flexibility on your part. All 100 of you smart and caring folks can't do barricade duty from 10 a.m.-noon. If we need to make a switch, we'll contact you.

See Volunteer Roles and Responsibilities on Montfordfestival.org

You can go to Montfordfestival.org to see detailed descriptions of roles and responsibilities for various volunteer positions. Please check them out.

My Appeal to All Neighbors

Our equation for greater success involves more committed neighbors for bigger success and an even greater impact on our neighborhood and Asheville. The festival is the Montford Neighborhood Association's biggest fundraiser. It makes possible the many charitable and service projects we do throughout the year.

When I offered to take this responsibility from Ron Phillips, who did a great job for several years, I had NO idea how challenging the role would be. I have a small but very talented team working with me. But the four of us cannot do the work alone.

Please sign up to help on May 19. Our festival's ongoing success depends on our neighborhood uniting as we so often do, pitching in and helping one another. That's one thing that makes Montford special. We make things happen.

Please be part of the equation. Make a small investment of your time this year, and thousands of neighbors, guests, and visitors will enjoy a better festival.

exercise your brain. educate your body.

*montford's neighborhood
pilates studio*

since 2005

53 Tacoma Circle thepilates-studio.com 828-216-7655

Green Earth Arborists LLC
PRUNING • REMOVAL • PRESERVATION
Asheville, NC



Chardin Detrich,
Certified Arborist MA-5299A

828-424-0235
greeneeartharborists@gmail.com

New Polling Place

Continued from front page...

Please don't show up at the Montford Community Center on Tuesday, May 8, ready to vote. If you do, the staff will smile politely and send you to William Randolph School.

Amendment One and Party Primaries

Please DO vote. Whether you're registered as a Democrat, Republican, Libertarian, or Unaffiliated, you'll get to vote for or against Amendment One, a "Constitutional amendment to provide that marriage between one man and one woman is the only domestic legal union that shall be recognized in this State."

In addition, voters registered as Republicans or Democrats will help select their party's nominees for the offices of U.S. President, U.S. House of Representatives—District 10, North Carolina Governor, North Carolina Lieutenant Governor, Buncombe County Commissioner, and several other state and local offices. Libertarians will help select their presidential nominee. Voters registered as Unaffiliated can choose a Democratic, Republican, Libertarian, or Nonpartisan ballot.

Voter Registration and Early Voting

If you're not registered to vote, go to buncombecounty.org/vote to find out how and where to sign up. Early voting is available from April 19-May 5. Montford's nearest early polling places are the North Asheville Library at 1030 Merrimon Avenue and the UNC Asheville Justice Center at 200 Wellness Way on campus.



Real Estate can be overwhelming but there is a neighbor who can help.

Jeff Stewart
Keller Williams Realty, Asheville



Cell: 828.337.8837

Fax: 828.210.0606

brokerjeff@gmail.com

brokerjeff.net

Montford is published monthly by the Montford Neighborhood Association for the residents of Asheville's first historic neighborhood. The newsletter is distributed by more than 50 volunteers.
 Staff: Editor—Joe Newman, jnewman@usouthal.edu, 254-5111. Layout and Design Specialist—Ross Terry, ross@krt-design.com, 254-3509. Advertising Manager—Joyce Thornburg, joyce-thornburg@att.net, 258-2207.
 Assistant Editors—Jenny Wilker and Wanda Newman.
 We welcome articles emailed by the 20th of the month to Joe Newman and advertising arranged with Joyce Thornburg and emailed by the 20th of the month to Ross Terry.


95 CHERRY STREET NORTH
 DOWNTOWN ASHEVILLE
 828 258-2435

2145 HENDERSONVILLE RD
 SKYLAND SPRINGS CENTER
 828 687-8533



MON-SAT 9:30-5:30

frugal framer
www.frugalframer.com



Paul Dixon
 828.254.4832

PDIXON77@YAHOO.COM

COMMERCIAL ■ RESIDENTIAL ■ INTERIORS
 EXTERIORS ■ LICENSED



NiNE
 MiLE

fresh * local * affordable

505-3121
 233 Montford Ave
 Open 7 days/week
 11:30am to 10:00pm
ninemileasheville.com



SID BORDER
 BROKER / OWNER



111 Central Ave.
 Asheville, NC 28801

Office: 828-258-1284 ext. 11
 Mobile: 828-230-4054
 Fax: 828-258-5384
 E-mail: sid@realtor.com
 ERA Mortgage: 1-888-307-8006

www.ERA.com
www.ERAsunburstrealty.com
www.CarolinaHistoricHomes.com



Private music lessons
 for all instruments and
 voices. Any age and
 skill level welcome.

ASHEVILLE
music
 SCHOOL

{ FOR A SOUND EDUCATION }

252.6244
www.ashevillemusic.org



affordable
bedding

254-5555
 996 Patton Avenue
 Asheville, NC

Better Health Through Better Sleep

Hours: Monday - Friday 10-7 • Saturday 10-5 • Sunday 1-5
GoToAffordableBedding.com

Mattresses • Futons • Bunk Beds • Beds

Laura Daniel

Bookkeeper
 with 15 years of experience

LauraBookkeeper@gmail.com
 828.776.6710

Specializing in **QuickBooks**

LOCALLY OWNED
 COMMUNITY MINDED



ALLEGRA
 PRINT & IMAGING.

253-6886 ♦ 191 CHARLOTTE STREET ♦ WWW.ALLEGRAASHEVILLE.COM