



# MONTFORD

THE NEWSLETTER OF ASHEVILLE'S MOST HISTORIC NEIGHBORHOOD  
VOL. 31 No. 5

MAY '26

*It's Springtime in  
Asheville.*

Happy May, Montford

TEMPIE AVERY MONTFORD CENTER

**Pick Up Volleyball (Ages 16+)**

Thursdays from 6:30-8:30 PM  
 Fridays from 10:00-2:00 PM  
 Closed on June 4, 2026



**Pick Up Basketball (Ages 16+)**

Tuesdays from 6:30-8:30 PM  
 Sundays from 3:00-6:00 PM  
 Closed on June 2 and June 21, 2026



**Youth Pickup Basketball**

Sundays from 1:00-3:00 PM  
 Ages: 8-15

**Art without Borders**

April 7 and 21 from 4:00-5:00 PM  
 Ages: 18+ Fee: \$5

**STEM into Spring Time**

April 8, 15, and 22 from 4:00-4:45 PM  
 Ages: 5-10 Fee: \$5

**Teen Easels and Eats**

Friday, May 22 from 5:00-6:30 PM  
 Ages: 11-15 Fee: \$5

**Montford Fairy Picnic**

Saturday, April 22 from 11:00-1:00 PM  
 Ages: 2-7 w/ Parent or Guardian  
 Fee: \$5



**Aero Adventures**

May 21 and 28 from 6:00-7:00 PM  
 Ages: 8-13 Fee: \$10

**Binge Worthy Trivia**

April 23 from 6:00-7:30 PM  
 "The Originals Trivia"  
 Ages: 12-17 Fee: \$5

**Mom and Me Painting**

May 7 from 4:30-6:00 PM  
 Ages: 30+ w/ child  
 Fee: \$5

**Block Party and Musical Beats BINGO**

Saturday, May 23  
 from 5:00-8:00 PM



**Splish Splash Carnival Bash**

Saturday, June 27 from 1:00-2:30 PM  
 Ages: 2-5 w/ Parent or Guardian Fee: \$5

**Montford Beginner mahjong**

Thursdays from 6:00-9:00 PM  
 Closed on May 21, May 28, and June 4  
 Sundays from 2:00-5:00 PM  
 Closed on June 21  
 Ages: 25+ Fee:\$5

**Dart Side of the Moon**

June 12 and 26 from 6:30-7:30 PM  
 Ages: 13-16 Fee:\$5



**For more Information Contact:**

Seth T. Jackson, Recreation Facility Manager  
 828-253-3714

Tempie Avery Montford Recreation Center  
 34 Pearson Dr, Asheville, NC 28801

[www.ashevillenc.gov/parks](http://www.ashevillenc.gov/parks) | [Facebook](#) | [Instagram](#)

# JUST LISTED | MONTFORD



41 CUMBERLAND CIRCLE



101 WESTOVER DRIVE

Panashe COMPASS



CATE SCALES | BROKER

12 E Walnut Street

Asheville, NC 28801

828.280.1576

[www.Panasheville.com](http://www.Panasheville.com)



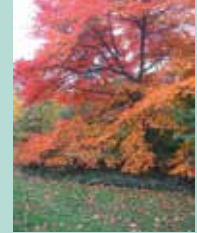
**828.712.2400**

**[GrizzlybearArborcare.com](http://GrizzlybearArborcare.com)**

# GRIZZLYBEAR ARBORCARE

*tough love for trees*

## Forever Montford



### TREES FOR MONTFORD

Lynn Raker

Only a year and a half after Helene devastated our tree canopy, Montford is already making meaningful strides toward rebuilding it. Perhaps reforestation is an exaggeration—given our dense housing and infrastructure, it has been generations since Montford could truly be described as “forested.” Still, for a neighborhood just steps from a lively downtown, we can proudly claim a remarkable wealth of mature trees and the vibrant wildlife that depends on them.

A study quantifying the percentage of canopy lost between 2022 and the summer of 2025 is expected to be released this summer, according to City of Asheville Urban Forester Keith Aitken. While the data will not distinguish between trees damaged by Helene and those removed afterward, it will provide a valuable snapshot of overall loss and help us set realistic replanting goals.

Even without the numbers in hand, we know our neighborhood’s canopy was severely compromised. Wildlife at least appears abundant again—an embarrassment of squirrels, the return of our stealthy hawk to its nest, bears lurking about to do what bears do, and the full chorus of insects, birds, reptiles, and mammals that share Montford with us. Yet one can’t help wondering how many were lost or forced to relocate in search of food and shelter after the storm.

Rebuilding our canopy is not optional. To maintain—and ideally surpass—the pre-Helene

ecological balance, we must commit to a robust, sustained tree-planting effort. Even before the hurricane, Asheville had already experienced a decline in canopy coverage. Once the new study is released, we hope to determine how many trees need to be replanted and to set realistic annual goals for restoring our leafy infrastructure.

But a lack of hard data hasn’t slowed us down. Thanks to revenue from the 2025 Montford Garden Tour, we planted 25 native canopy trees this past fall and winter – oaks, maples, black gums, and sycamores. Ten were placed on private property, and 15 were added to Tempie Avery Community Center, Hummingbird Park, Montford Park, and Reed Creek Greenway. Four of the Greenway trees were generously donated by Rosewood Landscape Company.

We encourage all residents to plant a native tree this year. If you have space, consider a large canopy species; if not, a smaller ornamental tree can still provide habitat, beauty, and essential environmental benefits. Every new tree strengthens the health and resilience of our neighborhood.

To learn more—or to receive financial assistance—please visit the Montford Tree Grant Program at [montford.org](https://montford.org).

[https://montford.org/wp-content/uploads/2019/12/TreeGrant\\_2019\\_1209.pdf](https://montford.org/wp-content/uploads/2019/12/TreeGrant_2019_1209.pdf)



# MONTFORD PARK PLAYERS

## May Theater Announcement

### Montford Park Players

Presents: **“The Wonderful Wizard of Oz”**

Adapted by V. Glasgow Koste, from the book by  
L. Frank Baum

Produced by Montford Park Players  
at the Hazel Robinson Amphitheatre

### Show Dates:

May 1- 30

Friday, Saturday and Sunday @ 7:30pm

Hazel Robinson Amphitheatre

92 Gay St. Asheville, NC

## June Theater Announcement

### Montford Park Players

Presents: **“Othello”**

By William Shakespeare

Produced by Montford Park Players  
at the Hazel Robinson Amphitheatre

### Show Dates:

June 5- June 27

Friday, Saturday and Sunday @ 7:30pm

Hazel Robinson Amphitheatre

92 Gay St. Asheville, NC



VISIT - <https://montfordparkplayers.org/2026-season/>

*Forever Montford*

**WELCOME PACKET**

**Dan & Judith Sanford**

Forever Montford, a committee of the Montford Neighborhood Association (MNA) has created a Welcome Packet for new Montford residents. The packet contains information such as a brief history of Montford, a list of MNA board members along with contact information, Montford listserv, Montford newsletter, neighborhood parks, events, restaurants, maps, volunteer opportunities and much more. Packets are being delivered by MNA board and Forever Montford committee members upon learning of new residents. Recipients of the Welcome Packet have shown great appreciation with one neighboring writing, "Looks like we lucked out in the neighbor and neighborhood department! I appreciate the history and local information. Well done, and thank you for your thoughtfulness."



If you are new to Montford or know of a new resident, please contact one of the below, and we will coordinate delivery of a Welcome Packet.

Dan Sanford: [sanford.danielj@gmail.com](mailto:sanford.danielj@gmail.com)

Judith Sanford: [sanford.judith@gmail.com](mailto:sanford.judith@gmail.com)

Leslie Humphrey: [leslieinmontford@gmail.com](mailto:leslieinmontford@gmail.com)

Ashima Nair: [ashimanair@gmail.com](mailto:ashimanair@gmail.com)



**FRUGALFRAMER**

**YOUR ART. / OUR PASSION.**

Downtown AVL/Montford | 95 Cherry St. North  
 South Asheville | 200 Julian Shoals Dr. #20

[frugalframer.com](http://frugalframer.com)

## Green Corner

Erin Hiatt

For this month's Green Corner, we are interviewing a NEW local, sustainability-linked organization that would welcome your support!



Our twelfth feature is the ReMix It: Creative Reuse Store, located at 202 Haywood Rd. Asheville, NC 28806 (across from Taco Billy!)

**Hours: Wednesday-Saturday from 11am-6pm**

### Q: What is ReMix It and how did it get started?

A: ReMix is a nonprofit creative reuse center that collects and organizes new and used donated art supplies and creative materials, then resells them in our retail store. Our founder and Executive Director, Amanda Wilde, was inspired by other reuse centers across the country and launched into action when JoAnn's fabric store closed in early 2025.

### Q: What range of products are available?

A: We have art and crafts covered, from writing and drawing to fiber arts, fabric, and right now, a ton of leatherworking supplies. The inventory is always changing based on what our community donates.

### Q: What and how can people donate items?

A: Donations are what make the whole creative reuse concept work so we are very thankful for your clean, organized materials that are ready to be used again!

You can make an easy appointment online at [remixitavl.org/donations](https://remixitavl.org/donations). Once it's time, park in our gravel parking lot, and enter through the side door, where a staff member will help you. We also have a list of accepted items on our website.

### Q: Any favorite customer or donation interactions or stories?

A: Sharing the idea of reuse and the circular economy has been incredibly rewarding and exciting. I especially love interactions with educators and seeing their joy in finding materials at lower costs. My favorite donations are the random one-offs or half-finished projects!

### Q: Are volunteer options also available?

A: We have volunteer opportunities every Tuesday and will be expanding volunteer opportunities including class instructors in the future. You can reserve your volunteer spot by visiting our website and registering on GivePulse.

### Q: Where can readers follow you or stay up to date?

A: The best way to stay up to date is to sign up for our email newsletter at [remixitavl.org](https://remixitavl.org) or follow us on Instagram. We are a playful, community space and are excited to have a bigger creative impact in Asheville for all ages, backgrounds, and skill levels.

---

Let me know what other local businesses you would like to see interviewed at [montfordgreencorner@gmail.com](mailto:montfordgreencorner@gmail.com). You can find past Green Corners on the [Newsletter Archive page](#).

---



**LOGAN**  
RESTORATION & CONTRACTING

Michael Logan  
828.707.8877  
[michael@ashevillerestoration.com](mailto:michael@ashevillerestoration.com)

a licensed, insured, and lead-safe company  
Historic Window and Door Restoration specialist

## The Latest Dirt

By Cherie Morris

Yesterday was the perfect spring day at the Asheville Botanical Garden. We were in our second day of the annual spring plant sale, and people were leaving, happily clutching pots of greenery and blooms. The first day was the usual chaos. Vendors, about 8 in all, were attempting to set up tents and unload trucks full of plants in the sunshine meadow. Meanwhile, the “early birds,” and I don’t mean the feathered variety, were fluttering around like it was a living garage sale, trying to snag the best looking perennial. I’m pretty sure I heard some maniacal giggling. For gardeners, it makes our hearts happy. Lots of people are eager to keep our planet green because “he who plants a garden, believes in tomorrow.” I believe that hopeful quote is attributed to Audrey Hepburn, and we all need some of Audrey’s hopefulness these days. Besides the shoppers hauling out carts of natives, we were treated to clusters of beautifully dressed young people, our world’s future, posing for prom photos. It was like a formal garden party where everyone and no one was invited! For those of us referred to as Boomers, I will just mention that prom dresses are NOT what they used to be! But how nice that this generation still appreciates a natural setting.

The two projects I’m highlighting in this issue are a rock garden under construction near the parking lot and the Sycamore memorial garden. The rock garden is in its preliminary stages but I’m already jealous of the giant stone bones of the bed. I would never imagine myself lusting after boulders. Sigh.



Our second new planting centers around the magnificent fallen giant Sycamore. As many of you know, we lost 47 trees during Helene. The shady Sycamore Meadow is no more, but we’ve left one big fellow where he fell. Our staff and volunteers have built a berm around the trunk, and it’s been hydroseeded. Currently the grass is sprouting and soon it will be sprinkled with blooming wildflowers. Where the root ball heaved from the ground, a rain garden will sprout. A rain garden is a swale designed to capture storm water and filter out pollutants from impervious surfaces without attracting mosquitoes. Sounds perfect! If you would like to learn more about creating this practical but beautiful landscaping addition, please check out our class Rain Gardens 101 on May 31, 2-3:30 with Ashley Haywood. Cost is \$35, and you can sign up on our website at [www.ashevillebotanicalgarden.org](http://www.ashevillebotanicalgarden.org). Members get a discount! Come grow with us!

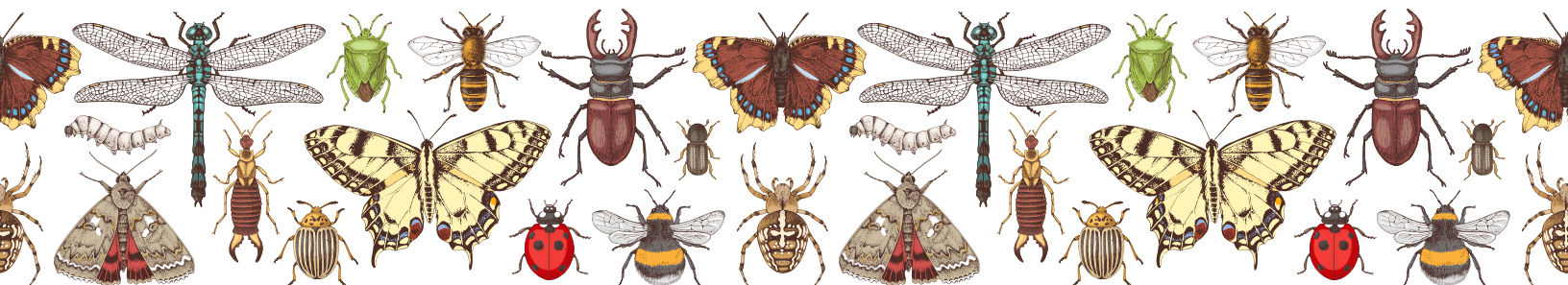
# SQUARE PEG

We're Different



828-277-5164

FINISH CARPENTRY  
CABINETS  
DESIGN  
□  
Asheville





## Pack Memorial Library 67 Haywood Street in downtown Asheville

Are you new to the neighborhood or has it been a long time since you last visited Pack Memorial Library in downtown Asheville? There are endless resources to explore or to discover:

- **Over 150,000 items available for browsing and lending.** These resources include books, periodicals, CDs, DVDs, and research materials. The library also participates in statewide resource sharing and offers inter-library loans.
- **Free internet access, public computing, and Wi-Fi.** Photocopy and printing services are available for a small fee.
- **Free laptop and hotspot lending program.** Laptops and hotspots are now available for a free 30 day loan with a library card.
- **Free tickets to local attractions.** Use your library card to sign up for Zoom passes, which are free tickets to local attractions like the WNC Nature Center, the NC Arboretum, or the Asheville Museum of Science.
- **Free digital audiobooks, e-books, magazines, and movies.** The Libby app from Overdrive provides downloads of these items to your smart phone, tablet, or computer. It's like an Audible subscription service, but free with your library card.

- **A vibrant and inviting children's library.** The library has books for all ages and reading levels, and board games, and sporting equipment available to lend.
- **Thousands of unique local historical records, photographs, maps, and memorabilia.** The Buncombe County Special Collections Library provides researchers the resources and expertise they need to understand and interpret the history of Western North Carolina.
- **Bookends Used Bookstore offers bargain prices for a wide variety of books and media, including vintage and collectible materials and bestselling fiction.** Proceeds from the sales benefit the library programming.

For more information, visit the library or their website:

<https://www.buncombecounty.org/governing/depts/library/branch-locations/pack-memorial.aspx>

Parking in the Civic Center parking ramp is free for the first hour. The library is also walkable from the Montford neighborhood.

## Montford Convenience Store

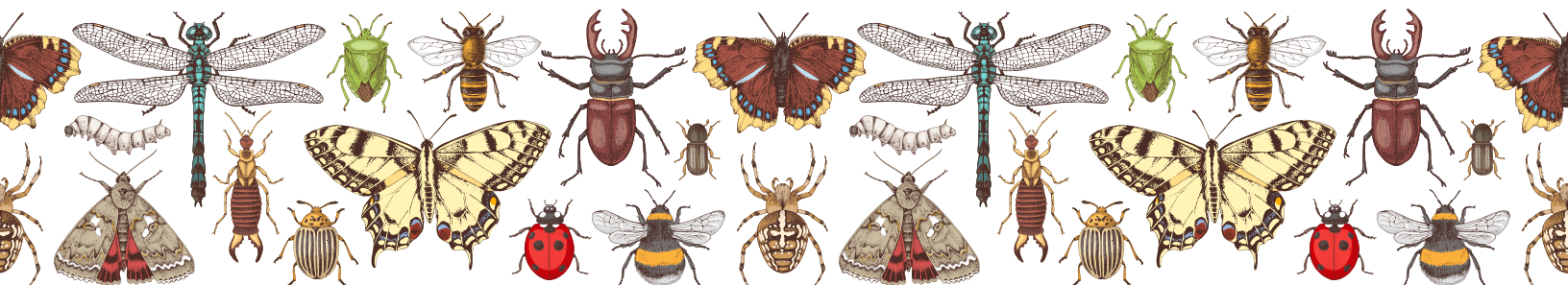
*Your local neighborhood store*

### Hours:

Monday thru Saturday - 8am to 10pm

Sunday - 9am to 10pm

231 Montford Avenue • phone 828-258-1879



## Resource Directory

### Historic Walking Tours

Stroll the neighborhood or downtown. Walking tours of historic Montford, Riverside Cemetery, Biltmore Village and downtown Asheville.

- 777-1014.

### Raven Invasive Plant Management

Saving trees and native plants from non-native invasives. Raven IPM is a local, organic, woman veteran-owned business specializing in mechanical removal of invasive plants. No chemicals, just hard work. • (828)866-3200 • RavenNC.com

### Smart Feller Tree Works

Down trees got you down? Contact us for all your tree removal and pruning needs! We are locally licensed and insured. Please call for free estimates. Montford references available. Thanks.

- 828.545.5503

### Square Peg Construction Inc.

Add beautiful custom woodwork to your historic home: New upgrades like wood paneling, built-in cabinetry, trim, doors, stairs and railings. Small details add big impact! Montford references.

- Call your neighbors, Leslie and David Humphrey 277-5164

**ONECLICKFIX**

TRUSTED & PROFESSIONAL COMPUTER REPAIR SERVICES FOR BUSINESSES

**ONE CLICK FIX**  
438 Montford Ave,  
Asheville, NC 28801  
info@oneclickfix.com  
www.oneclickfix.com

One Click Fix provides exceptional tech support for all your business needs. Call today to get a quote on our remote services that will keep your network and devices up and running 24/7/365.

THE FASTEST AND MOST RELIABLE SERVICE IN ASHEVILLE

**ONE CLICK FIX 828-318-8558**

**Paul Dixon**  
828.215.7772  
PDIXON77@YAHOO.COM

COMMERCIAL ■ RESIDENTIAL ■ INTERIORS  
EXTERIORS ■ LICENSED

**MEMORIAL DAY**

Remember and Honor

**MUSIC LESSONS  
IN MONTFORD**

CLASSICAL PIANO / MUSIC THEORY / COMPOSITION

<p>EXPLORING THE ART OF PIANO THROUGH COMPREHENSIVE LEARNING</p>	<p>(WEEKLY SESSIONS) 45 MIN - \$240 PER MO. 60 MIN - \$300 PER MO.</p>
<p>EMPHASIZING CLASSICAL PIANO LITERATURE, PIANO TECHNIQUE, MUSIC THEORY AND COMPOSITION</p>	<p>*VIRTUAL LESSONS OFFERED WITH DISCOUNTED PRICE*</p>

**JOHN STAROSTA**

STAROSTA.JOHN@GMAIL.COM  
980-333-5992



***Join The Montford  
Listserve, I did!***

The Montford listserv is a neighborhood discussion list. This is the place where you can exchange news about the neighborhood.

Visit <https://montford.org/montford-listserve/>



**Historic Resources  
Commission of  
Asheville and  
Buncombe County**

**Montford Action Agenda 05/13/26**

Members Present: Chair Will Hornaday, Vice-Chair Sioux Oliva, Shannon Watkins, Amy Moxley, Celesta Gorman, Jenny Bowen, Cecil Holt, Leslie Humphrey, Robert Mays, Hans Skouby

Members: Absent: None

Staff Present: Alex Cole, Matt Holloway, Jannice Ashley, Aspen Johnston

**Item, Summary and Action**

**265 Cumberland Avenue (PIN 9649045369)**

- Alteration of existing retaining wall in front yard.

**Action**—Approved

**174 Montford Avenue (PIN 9649028665) -**  
Modification of roof line on rear elevation.

**Action**—Approved

**315 Pearson Drive (PIN 9639854065)-**  
Enclosure of porch on the rear elevation.

**Action**—Approved with conditions

**HRC Application Portal**

The city is now accepting HRC applications digitally via the Development Portal at this address:

<https://develop.ashevellenc.gov/>

Please refer to the website ([www.ashevellenc.gov](http://www.ashevellenc.gov)) for the full approved minutes after the following month's meeting.



CLASSICS REVISITED  
HISTORICAL RENOVATIONS  
RESTORATIONS AND WOODWORKING  
(828)774-6985  
CLASSICSAVL.COM

Open 11-5 everyday



Downtown Books & News  
67 North Lexington Avenue  
www.dbnbooks.com

**828.545.5503 smartfellertreeworks.com**

Hello  
Spring



*The Montford Newsletter* is published online by the Montford Neighborhood Association, P.O. Box 7181, Asheville, NC 28802, for the residents of Asheville's first historic neighborhood. We welcome articles and advertising by the 20th of the month.

Note: Opinions expressed in this newsletter by contributing authors do not necessarily reflect the official policy or position of the MNA. Contact Editor Kelly Ross Terry at [krtgraphicdesign@gmail.com](mailto:krtgraphicdesign@gmail.com), 230-7439 for more information.