



MONTFORD

THE NEWSLETTER OF ASHEVILLE'S MOST HISTORIC NEIGHBORHOOD

VOL. 30 No. 05 MAY '25

*"March winds and
April showers
bring forth*

*May
flowers"*

*Save
the
Date*

**The 2025 Historic
Montford Garden
Tour takes place
Saturday, June 7,
from 10 a.m. to 4
p.m., rain or shine.**

**DETAILS INSIDE
and at
montfordgardentour.org**

HISTORIC MONTFORD



NEW THIS YEAR: Special featured Attractions of the 2025 Historic Montford Garden Tour:

The Historic Montford Garden Tour, a favorite community fundraiser, returns on Saturday, June 7, 10 am – 4 pm. **Featuring eight delightful gardens**, local music, plein air artists, and a garden information fair, the Montford Garden Tour will be a fun and memorable day for everyone!

This year's generous garden hosts faced unexpected challenges when Hurricane Helene ravaged Western North Carolina last fall. Many century-old trees were laid on the ground by 100 mph wind gusts. Some shady gardens are now sunny gardens. But all our gardens illustrate the resiliency of our community. Appropriately, proceeds from this year's event will help replace the hurricane-ravaged tree canopy. Visit <https://montfordgardentour.org/>

Live local music in each garden, staggered throughout the day.

Music is a big part of the Montford and Asheville culture so we couldn't have an Historic Montford Garden Tour without music. Local musicians will be playing at varying times throughout the day on the porches, decks, and patios of our gardens on the tour. The schedule will be posted immediately prior to the Garden Tour and will be included in the Tour Guide you'll receive as your ticket into the event.

Plein air artists in each garden.

For the first time in the event's history, the Montford Garden Tour will include artists painting "en plein air" throughout Montford. An artist will paint in or around each of the tour gardens for approximately 2-3 hours. While exact painting times may vary due to conditions and the needs of the artist, you should be able to see most artists painting sometime between 11:00 a.m. and 3:00 p.m. Feel free to approach the artists and see what they are creating!

Information Fair

Information Fair at Montford Garden, located at the corner of Montford Avenue and East Waretta Street.

Connect and learn about native plants and gardens when you visit these leading local organizations and businesses. Representatives will be available throughout the day in Montford Garden at the intersection of Montford Avenue and East Waretta Street.

Authentic Greek lunch

Authentic Greek lunch offered as a fund-raiser by Holy Trinity Greek Orthodox Church on Cumberland Avenue.



Unforgettable Music at the Tour!

So, you don't think 8 gorgeous gardens are enough to get you excited about the Historic Montford Garden Tour? Then how about the opportunity to hear 9 well-known local bands, each in the surrounds of a beautiful garden? Just think about it... where else would you have this rare opportunity? Our line-up is chock-full of well-known musicians, some with recognition far beyond the Asheville music scene.

Take Aaron "Woody" Wood for example. Over the past few years, Woody has opened for Brad Paisley, Buddy Guy, Jamey Johnson, Kellie Pickler, David Holt and Tony Joe White. He sang on The Avett Brothers' 2013 Release Magpie And The Dandelion and plays at the annual Xmas Jam in Asheville, NC.

Or maybe you recognize the name Leeda "Lyric" Jones. Born and raised in Asheville, Lyric started her career in 2008 busking on the streets. Now a well-known singer-songwriter, musician and music teacher, Lyric holds several Mountain Xpress "best of" awards including best funk band, best vocalist, best lyricist, best R&B soul, best singer-songwriter, as well as all-around favorite band.

This year's gardens are a not-to-be-missed collection, and the musicians are a not-to-be-missed lineup! The complete schedule of the bands will be in the Tour brochure, which is also your ticket into the gardens. Each of the 9 bands will play 2-hour sets with the sets staggered throughout the day. There will always be music in the air!

Many thanks to Ben Scales, local musician and lawyer, who dedicated the time and effort to line up these multi-talented musicians for the Garden Tour:



Aaron "Woody" Wood -
Appalachian Cosmic Soul



Bam-a-Lam - Lo-Fi Pop &
Rock-n-Roll



Ben Scales and Andy Pond -
Bluegrass/ Newgrass



Bryce Robertson - Smooth jazz



Elizabeth Terry & John Logue -
Violin and Classical guitar



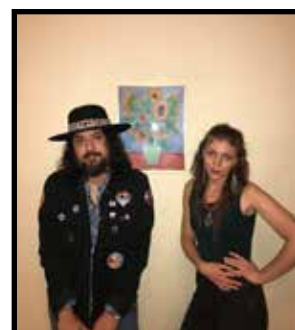
Merissa Gail - Classical/ Irish



Lyric - R&B/Soul



Fancy & the Gentlemen -
Americana/ Country



Paper Crowns Duo - Folk
inspired power duo

Act now! Don't miss this amazing opportunity! Visit
MontfordGardenTour.org for more
information on the gardens, musicians, artists, and tickets.

Our Sponsors

We are so thankful for our Historic Montford Garden Tour sponsors who are helping to support our community.

Garden Sponsors



TALL JOHN'S



CATE SCALES
BROKER - NEST REALTY



Anonymous sponsor
in memory of
Woody Farmer



Musician Sponsors



Stacey Dansky
and John O'Neill



BARRINGER
CONSTRUCTION



Plein Air Event Sponsor



Media Partners



BLUE RIDGE
PUBLIC RADIO



Garden Tour Docents Needed



During our 2023 Garden Tour, over 1,000 people toured our beautiful neighborhood. The feedback from our guests, garden hosts, musicians and others was very favorable. Contributing to the success of the tour were the numerous docents, who ensured guests enjoyed a pleasant experience. So once again, we are sending out a call for interested individuals to serve as docents during the 2025 garden tour. **Each docent will receive a free garden tour ticket.** The below link contains more information and an opportunity



to sign up for one of the eight participating gardens and also the Montford Garden Information Fair. The 2025 Historic Montford Garden Tour takes place Saturday, June 7, from 10 a.m. to 4 p.m., rain or shine.

< Sign Up:

Use the QR code or go to:

<https://www.signupgenius.com/go/10C0D45AAA923A2F5C07-54984926-2025#/>



www.r7painting.com

Daniel Creft
828-747-9293
r7paint@icloud.com

Interior & Exterior Painting
Pressure Washing
Popcorn Removal

Montford Convenience Store

Your local neighborhood store

Hours:

Monday thru Saturday - 8am to 10pm

Sunday - 9am to 10pm

231 Montford Avenue • phone 828-258-1879



Michael Logan

828.707.8877

michael@ashevillerestoration.com

a licensed, insured, and lead-safe company

Historic Window and Door Restoration specialist



Paul Dixon

828.215.7772

PDIXON77@YAHOO.COM

COMMERCIAL ■ RESIDENTIAL ■ INTERIORS
EXTERIORS ■ LICENSED

Our Gardens

Enjoy a casual stroll on winding paths nestled between colorful, sweetly scented blooms. Explore reflections in a secret garden pool, eclectic garden sculpture, and the unique flora of western North Carolina when you visit the eight enchanting gardens on the 2025 Historic Montford Garden Tour. The Tour takes place Saturday, June 7, from 10 a.m. to 4 p.m., rain or shine.

Please note: Pets are not allowed in the gardens.



HISTORIC MONTFORD





828.545.5503 smartfellertreeworks.com



NINE
MiLE

ninemileasheville.com



Open 11-5 everyday

Downtown Books & News
67 North Lexington Avenue
www.dbnbooks.com



MEMORIAL DAY

Remember and Honor

Montford Neighborhood Association (MNA) Quarterly Community Meeting Minutes

Odyssey School, Wednesday, April 23, 2025

The meeting was called to order at 6:31 PM. There was a good turnout of about 40 neighbors.

Asheville Police Department – Officer Isaiah Senyak and District Commander Josh Hill

Community Engagement Officer Isaiah Senyak (isenyak@ashevillenc.gov) shared information on crimes reported, arrests made, and other police activities in Montford. Significant crimes reported included 5 assaults (1 domestic violence, 1 love triangle, 2 against AFD/EMS and 1 drug related scuffle), a business breaking and entering in which a heavily intoxicated female attempted to enter a building, a residential breaking and entering in which a male attempted to enter an occupied residence while yelling he just needed somewhere to live, an attempted residential breaking and entering where suspect was captured on security camera unsuccessfully trying a front door, 2 DWI's, 1 fraud, 6 thefts, 1 larceny of an unlocked motor vehicle and 1 cyberstalking.

He emphasized how important it is to lock residence and business doors and windows, as well as cars, that most crimes are crimes of opportunity.

He urged people to attend Coffee with a Cop, Friday, May 9 from 8-10, at Ingles, 1141 Tunnel Road.

District Commander Josh Hill reported that violent crime and crimes against property last quarter were both down about 21% from the prior quarter in the district.

He urged us to feel free to stop by our district Station 13 on Broadway.

APD urges us to use the Asheville App to report conditions reportable from it and the Asheville Police Non-Emergency Report Line (828-252-1110) for things not significant enough for 911 or not requiring rapid response.

Asheville Neighborhood Co-Ordinator – Trey Irby

Trey Irby (tirby@ashevillenc.gov) reported that the city is working to create emergency response networks throughout Asheville. He also reported that the community space upfit program continues strong, that the grant for Odyssey School will be coming but that processing is a little slow.

Asheville Waste Reduction Program Manager – Dr. Ashley Lavender

Dr. Lavender is from the Sanitation Division of the Department of Public Works and has held her position for just over 2 months. She has lived in West Asheville a year and a half. She enthusiastically provided examples of ways to reduce what goes into the landfill and distributed several handouts. She urged us to attend a food scraps celebration at Stephens-Lee from 10 to 12 this Saturday, April 26 and a Hard to Recycle event 10 to 12 May 3 at AC Reynolds HS.

Mountain True – Single Use Plastics Update – Anna Alsbrook

She reported that Mountain True has noted the recycling of plastic bags offered at front of house in most supermarkets. Mountain True has hidden Apple trackers in bags it put in such recycling and found that Ingles does recycle our bags, but Apple trackers put in recycling at some other stores ended up in the ocean or Thailand.

Resilience and Sustainability – Susan Loftis

Susan is working to set up a task force under MNA, both for public and personal emergencies, including roles like checking on a neighbor. A group met 3 weeks ago to discuss resilience and sustainability activities and plans, including communication building to aid in the next recovery. They wish to support tree replacement and kudzu mitigation among other things. They are seeking participants, including people to chair or co-chair such a task force. When they have more participants and are clearer on their plans, Susan hopes to be able to bring the task force under the umbrella of MNA.

FEMA Update – Susan Loftis

City Council on April 8 approved their proposed post-Helene Action Plan and awaits HUD approval. The City anticipates a grant agreement this summer with implementation to begin this fall or winter.

Look online at “Asheville Recovers” for City of Asheville/FEMA updates.

Financial Report – Susan Eggerton

Current financials were circulated, in line with budget and little changed from last meeting. It was suggested that next year’s budget be addressed at the next quarterly meeting.

Montford Garden Tour – Dan Rogers

Dan Rogers is chairing the tour this year. We have 8-10 gardens on the tour and each will have musicians and a plein air artist for a substantial part of the time. The tour will focus on the resilience of the neighborhood and the Asheville community. It will be called the Resilience Garden Tour. Tickets will be \$30 and are available on the Tour website. Sponsorships are sold out. The tour needs more docents. The next issue of the Asheville Laurel will have an article on the tour. This will be MNA’s only fundraiser in more than a year, so let’s support it.

5 Points Neighborhood Association – Chris Cotteta, President

Chris spoke about the efforts of his neighborhood association and other concerned people to save the UNCA woods from destruction as UNCA implements its role as a “millennial campus.” He urged us to get involved, visit his neighborhood association’s website, purchase T shirts and yard signs. His association meets every other Thursday [April 24 is a meeting Thursday for them] and all are welcome.

Kudzu Update – Karen MacNeil

Karen updated us on our ongoing kudzu mitigation, including cooperation with Holy Trinity Greek Orthodox Church. Progress is such that focus can now turn to the future use of the area which had been overgrown with thick kudzu.

Board Members and Officers – Bill Eakins

Bill reported that the officers and board members renominated for a second term were president Randy Hall, vice president Bill Eakins, treasurer Susan Eggerton, secretary Tom Fehsenfeld and at large board members, Marti Boyles, Karen MacNeil and Lynn Raker. Nominated for a first two-year at large term on the board was Ken Pitts. The slate was moved, seconded and unanimously approved. As a new board member Ken Pitts said a few words to introduce himself and was warmly received.

Tempie Avery Montford Community Center

Facilities Manager Jackson distributed the Tempie Avery flyer with upcoming events, schedule items summer camp and other news. The Center has returned to normal programming and schedules.

President Randy Hall called for any other new or old business. There being none, the meeting stood adjourned at 8:15 p.m.

Respectfully submitted,
Bill Eakins, Acting Secretary,
for Tom Fehsenfeld who had to be
out of town



Order your Montford Banner

Three colors to choose from: red, green, and mustard yellow. They are available at the Asheville Visitor Center, 36 Montford Ave. (828) 210-2726

Green Corner

Erin Hiatt

For this month's Green Corner, we are interviewing another one of our wonderful local, sustainability-minded businesses who could use your support!

Our fourth feature is Rosanne Kiely, owner of West Village Market with support from Jeannine Kienzle, Marketing Associate, located in West Asheville at 771 Haywood Rd, Asheville, NC 28806. Hours: 9am-7pm daily

Q: What is the origin story of West Village Market?

A: The market began in the Grove Arcade, as Grove Corner Market, in 2002. The mission is a neighborhood market that supports the community. After seven years, we were offered an opportunity to come to West Asheville to replace the Co-op. We soon found out that conventional foods weren't necessary in this neighborhood. We happily transitioned to strictly natural foods, with a commitment to serving our community.

Q: What range of products do you offer?

A: We're a full spectrum natural food store with a highly curated selection of products. We offer all organic produce and seasonal local produce. We have a bulk department including herbs, supplements & bodycare section (with many local products), groceries, refrigerated and frozen (vegan and gluten-free), beer and wine, and our grab and go deli with hot burritos, as well as salads and sandwiches.

Q: What are "Terracycle Days"?

A: Terracycle Days happen every other month, as an opportunity to keep hard-to-recycle items out of the landfill. Visit our website for a detailed description of the items we accept.

Q: Any favorite customer interactions or stories?

A: I love connecting with shoppers over favorite products. My favorite story is inviting a customer to my clothes swap and finding out we had mutual friends, who were also attending. It's such a small world in Asheville! Rosanne



says she enjoys watching the community children grow up, and shop on their own and even apply for a job!

Q: How did the hurricane impact your business?

A: We lost product due to no power for five days but the support, patience and compassion that were demonstrated far outweighed any losses. We remained open the entire time during the storm and were moved by both the needs of the community, as well as their support. In spite of the shortages, we managed to come out the other side stronger. People tell us that they are much more conscious of shopping small and local. They're grateful we were here, just as we were grateful for their loyalty and patronage.

Q: Where can readers follow you or stay up to date?

A: Follow WVM on FB or IG (@westvillagemarket) or westvillagemarket.com, and sign up for our newsletter.

Let me know what other local businesses you would like to see interviewed at montfordgreencorner@gmail.com.

SQUARE PEG

We're Different



828-277-5164

**FINISH CARPENTRY
CABINETS
DESIGN**

▣
Asheville



Join The Montford Listserve

The Montford listserv is a neighborhood discussion list. This is the place where you can exchange news about the neighborhood. Visit <https://montford.org/montford-listserve/>



**GRAND OPENING
+
FUNDRAISER**

benefitting the  Red Creek Greenway

Live music by  SAYLOR BROTHERS

Food + more!

**MAY 29 @ 11AM
35 MONTFORD AVE.**






*Let us be your
guest room.*

*Conveniently located in
Montford for visiting
friends and family!*

 **Pinecrest**
Bed & Breakfast
249 Cumberland Ave
(828) 281-4275




Scan me

Forever Montford



Would you like to get in touch with your neighbors more easily?

Do you have hobbies or special interests that you would like to share with others?

Do you want to be more involved in the Montford community?

If you answered yes to any of these questions, the Montford Neighborhood Directory is for you. The Montford Neighborhood Association has created an online directory, making it easy to do all of the above. It is a secure directory which is stored on Google Docs, so you will need a Google account to access the directory. No Gmail is required, just a Google account. No Google account? No problem, it is a few easy steps to create one and you can keep your old email address.

To date, we have *190 neighbors who have signed up, and we invite you to join as well.

Neighbors have already started forming social groups using the Directory. They have expressed interest in Book Clubs, Supper Club, Wine Club, Hiking, Yoga, Tennis, Gardening, Crafts, Cooking, Baking, Woodworking, Painting, Playdates and more. If you would like to join, simply send an email to montford.directory@Gmail.com

TEMPLE AVERY MONTFORD CENTER

Calendar

Facility Closures:

June 2-6

June 19

July 4

July 18

August 8 from 5:00PM-8:00PM

Pick-Up Volleyball

Ages 16+

Thursdays from 6:30PM-8:30PM

(Closed June 5, Begins June 12)

Pick-Up Basketball Adults

Ages 16+

Tuesdays from

6:00PM-9:00PM

Sundays from

4:00PM-6:00PM

Pick-Up Basketball Youth

Ages 8-15

Saturdays from 4:00PM-6:00PM

Toddler Beach Day

June 21 from 1:00PM-3:00PM

Montford Teddy Beary Fun Picnic

July 10 from 11:00AM-1:00PM

Pre-Registration is Requested

Dart Side of the Moon Nerf Night

August 15 and 29 from 6:00PM-7:30PM

Artistic Adventures for Toddlers

July 9 and 23 from 2:00PM-2:30PM

Summer Bucket List

May 30 from 5:30PM-6:30PM

June 10 from 5:30PM-6:30PM



Splash of Colors (Toddlers)

August 16 from 1:00PM-1:45PM

Montford Art Afternoons

July 1, 15, and 29 from

1:00PM-2:00PM

Easel and Eats

August 13 from

5:00PM-7:00PM

Summer Camp (Youth and Teen)

June 9-August 15

Monday-Friday from 8:30AM-6:00PM



For more Information Contact:

Seth T. Jackson, Recreation Facility Manager |

828-253-3714

Temple Avery Montford Recreation Center | 34

Pearson Dr, Asheville, NC 28801

www.ashevillenc.gov/parks | Facebook |

Instagram



Reese Real Estate, Inc.

LAURIE REESE

BROKER | OWNER

828.215.4349

laurie@lauriereese.com

www.lauriereese.com

Resource Directory

Historic Walking Tours

Stroll the neighborhood or downtown. Walking tours of historic Montford, Riverside Cemetery, Biltmore Village and downtown Asheville.

- 777-1014.

Raven Invasive Plant Management

Saving trees and native plants from non-native invasives. Raven IPM is a local, organic, woman veteran-owned business specializing in mechanical removal of invasive plants. No chemicals, just hard work. • (828)866-3200 • RavenNC.com

Smart Feller Tree Works

Down trees got you down? Contact us for all your tree removal and pruning needs! We are locally licensed and insured. Please call for free estimates. Montford references available. Thanks.

- 828.545.5503

Square Peg Construction Inc.

Add beautiful custom woodwork to your historic home: New upgrades like wood paneling, built-in cabinetry, trim, doors, stairs and railings. Small details add big impact! Montford references.

- Call your neighbors, Leslie and David Humphrey 277-5164



828.712.2400

GrizzlybearArborcare.com

**GRIZZLYBEAR
ARBORCARE**

tough love for trees



**TRUSTED &
PROFESSIONAL
COMPUTER
REPAIR
SERVICES
FOR BUSINESSES**

ONE CLICK FIX

438 Montford Ave,
Asheville, NC 28801
info@oneclickfix.com
www.oneclickfix.com

One Click Fix provides exceptional tech support for all your business needs. Call today to get a quote on our remote services that will keep your network and devices up and running 24/7/365.



THE FASTEST AND MOST RELIABLE SERVICE IN ASHEVILLE

ONE CLICK FIX 828-318-8558

FRUGALFRAMER



YOUR ART. / OUR PASSION.

Downtown AVL/Montford | 95 Cherry St. North
South Asheville | 200 Julian Shoals Dr. #20

frugalframer.com

The Montford Newsletter is published online by the Montford Neighborhood Association, P.O. Box 7181, Asheville, NC 28802, for the residents of Asheville's first historic neighborhood. We welcome articles and advertising by the 20th of the month.

Note: Opinions expressed in this newsletter by contributing authors do not necessarily reflect the official policy or position of the MNA.

Contact Editor Kelly Ross Terry at krtgraphicdesign@gmail.com, 230-7439 for more information.