



MONTFORD

THE NEWSLETTER OF ASHEVILLE'S MOST HISTORIC NEIGHBORHOOD
Vol. 29 No. 09

SEPTEMBER '24

September is here!
Looking Forward to the Holiday Season!

Asheville Just 5 Miles Ahead

SATURDAY - DECEMBER 14

1-5PM

TICKETS - \$30

26TH MONTFORD
HOLIDAY
TOUR OF HOMES!

MORE INFO COMING SOON:
WWW.MONTFORDTOUR.ORG



26th Montford Holiday Tour of Homes!

Saturday, December 14, 2024

We are excited to be bringing back the Montford Holiday Tour of Homes for the 26th year! The Tour is a fundraiser for the Montford Neighborhood Association (MNA), a non-profit community organization that strives to keep our neighborhood progressive, verdant, safe, and fun.

Details coming soon to <https://montfordtour.com/>
 Email Cate Scales with questions: catescales@gmail.com

From last year's Tour - 296 Montford Avenue

TEMPIE AVERY MONTFORD CENTER

Calendar

Science of Eating

Friday, September 13 from 6-7 pm
 Age: 13-17
 Free

Toddler Outdoor Craftin'

Wednesdays, September 4 and 25 from 5-6 pm
 Ages: 2-4 accompanied by parent/guardian
 Free

Girls Girl Brunch

Saturday, September 21 from 12-3 pm
 Ages: 16 and older
 Free (Pre-Registration is required)

Teen Leadership Afterschool Program

Monday-Friday from 3:30-6 pm
 Starts: August 26, 2024
 Contact staff for program and registration information.

Tempie Avery Montford Center After School Program

Monday-Friday from 3-6 pm
 Starts: August 26, 2024
 Contact staff for program and registration information.

Pick-Up Basketball

Sundays 4-6 pm
 Thursdays 6-9 pm
 (October 30-December 19)



Pick-Up Volleyball

Mondays and Fridays
 from 10:30-2:30 pm
 August 26-December 20
 (schedule may vary certain weeks due to scheduling)



For more Information Contact:

Seth T. Jackson, Recreation Facility Manager | 828-253-3714
 Tempie Avery Montford Recreation Center | 34 Pearson Dr, Asheville, NC 28801
www.ashevillenc.gov/parks | [Facebook](#) | [Instagram](#)

SUPPORT PRESERVATION AND HAVE A
MAGICAL EVENING TOO!



CATE SCALES, BROKER
828.280.1576

NEST REALTY



FOR INFO AND TICKETS
WWW.PSABC.ORG



Would you like to get in touch with your neighbors more easily?

Do you have hobbies or special interests that you would like to share with others?

Do you want to be more involved in the Montford community?

If you answered yes to any of these questions, the Montford Neighborhood Directory is for you. The Montford Neighborhood Association has created an online directory, making it easy to do all of the above. It is a secure directory which is stored on Google Docs, so you will need a Google account to access the directory. No Gmail is required, just a Google account. No Google account? No problem, it is a few easy steps to create one and you can keep your old email address.

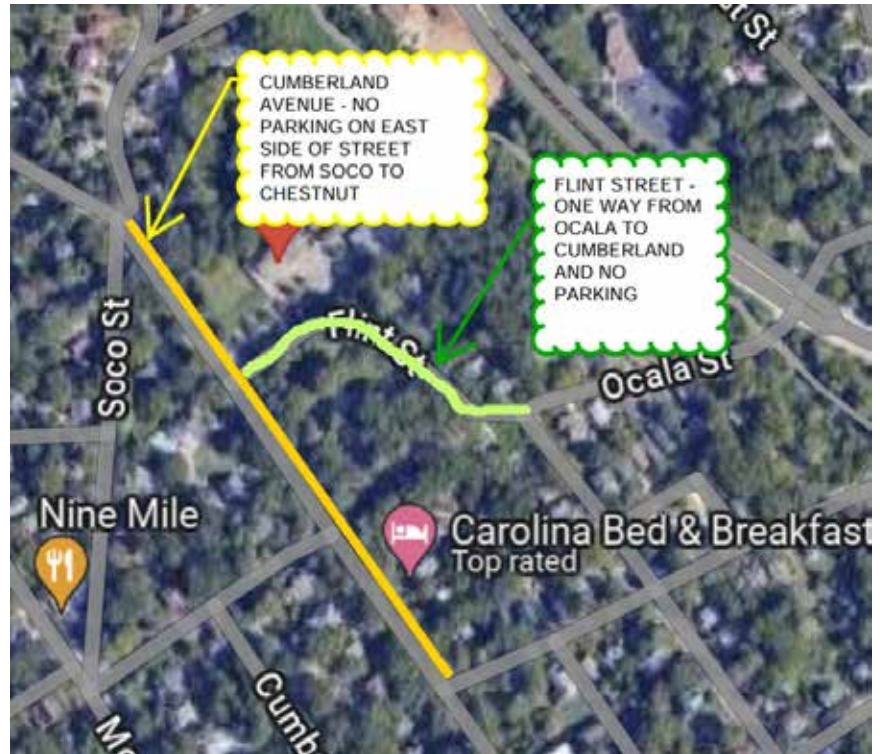
To date, we have 170 neighbors who have signed up, and we invite you to join as well.

Neighbors have already started forming social groups using the Directory. They have expressed interest in Book Clubs, Supper Club, Wine Club, Hiking, Yoga, Tennis, Gardening, Crafts, Cooking, Baking, Woodworking, Painting, Playdates and more. If you would like to join, simply send an email to montford.directory@gmail.com

2024 AVL Greek Festival - Sep 27 & 28

The Asheville Greek Festival attracts visitors from near and far for two days of dining, dancing, shopping, and celebrating together. With offerings for all ages, it's one of Asheville's most cherished annual events. Our Montford neighborhood is thrilled to welcome our neighbors to this event! Here are some important updates for this year's festival:

We have introduced a new shuttle bus service to reduce traffic to and from the Festival. Also, the AVL City has approved the following traffic and parking changes for festival days (Friday and Saturday). While we understand that these changes may cause temporary inconvenience, we have identified a need for a solution to address the traffic issues from last year's festival.



- **Cumberland Ave:** No parking on the east side of the street to accommodate emergency vehicles and maintain two-way traffic flow.
- **Flint St:** No parking will be permitted, and it will be one-way traffic only from Ocala St. to Cumberland Ave.
- **Food Truck:** A new addition for 2024 - we will have a Greek Fest food truck stationed on Cumberland Ave, directly across from the Church, offering a limited-menu version of the same delicious Greek Fest foods to go!

We extend a warm welcome to our Montford neighbors for the Greek Fest and value your understanding and support. Your contribution greatly contributes to the success of this enjoyable and family-friendly event. We look forward to sharing our faith, food, and culture with you on September 27th and 28th!



Forever Montford

WELCOME PACKET

Dan & Judith Sanford

Forever Montford, a committee of the Montford Neighborhood Association (MNA) has created a Welcome Packet for new Montford residents. The packet contains information such as a brief history of Montford, a list of MNA board members along with contact information, Montford listserv, Montford newsletter, neighborhood parks, events, restaurants, maps, volunteer opportunities and much more. Packets are being delivered by MNA board and Forever Montford committee members upon learning of new residents. Recipients of the Welcome Packet have shown great appreciation with one neighboring writing, "Looks like we lucked out in the neighbor and neighborhood department! I appreciate the history and local information. Well done, and thank you for your thoughtfulness."



If you are new to Montford or know of a new resident, please contact one of the below, and we will coordinate delivery of a Welcome Packet.

Dan Sanford: sanford.danielj@gmail.com

Judith Sanford: sanford.judith@gmail.com

Leslie Humphrey: leslieinmontford@gmail.com

Ashima Nair: ashimanair@gmail.com



828.712.2400

GrizzlybearArborcare.com

**GRIZZLYBEAR
ARBORCARE**

tough love for trees

Green Corner

Erin Hiatt

Gardens are often a perfect example of where adopting more sustainable habits ultimately means saving both money and effort. While

Spring naturally inspires ideas of gardening, consider, for example, planting in the Fall rather than the Spring.

- **Soil is still warm:** During the transition from summer to fall, soil is still warm, which encourages roots to grow and establish themselves up until the ground freezes.
- **Air is cooler:** In contrast, the cooler air and less intense sunshine can also mean plants lose less water from their leaves during the day, making them less water intensive while making it easier to establish themselves.
- **Many seeds germinate better:** Rather than spending money on plant seedlings in the spring, save money by planting any seeds and bulbs you can in the fall and then plant supplementally in the spring.
- **Fewer pests and diseases:** Spring and summer pests and diseases are less of a concern as temperatures cool down. Drier air in the fall also means less spread of many plant diseases.
- **Less weed competition:** While weeds may still be around, they don't pop up at the intensity as in the spring.
- **Easier on gardeners:** Fall allergies aside, once mosquitoes and other pests have died back, fall gardening can make it easier to stay cool and comfortable.

And here are a few sustainable gardening tips useful yearound:

- **Plant natives:** Yards of healthy native plants are less likely to need supplemental watering or soil conditioning once established, since they are growing where they have adapted to thrive.



- **Water deeply, only when needed:** Shallow, frequent watering can lead to shallow and underdeveloped root systems that can't withstand more extreme weather. And spraying or using a sprinkler means water may land on leaves or stems, where it's not absorbed and can make plants more susceptible to burning and disease.
- **Water at the root in the early morning:** Watering during the day leads to much of the water being lost to evaporation while watering at night puts many plants at the worst risk for developing harmful fungal issues and disease.

The average U.S. household uses more water outdoors than for showering and washing clothes combined, according to the EPA. Check out the [Outdoors WaterSense pages](#) for more tips on landscaping, irrigation, and more.

And as we enter Fall, don't forget to revisit the [2023 October Green Corner](#) for ideas on sustainable upgrades to incorporate for your fall treats and traditions this year, from candles and pumpkin spice lattes to Halloween costumes and candy.

Are you a skilled and sustainable Montford gardener? Let me know your favorite tips at montfordgreencorner@gmail.com.



R7
PAINTING
SERVICE
★★★★★
www.r7painting.com

Daniel Creft
828-747-9293
r7paint@icloud.com

Interior & Exterior Painting
Pressure Washing
Popcorn Removal



Reese Real Estate, Inc.

LAURIE REESE

BROKER | OWNER

828.215.4349

laurie@lauriereese.com

www.lauriereese.com



Resource Directory

Historic Walking Tours

Stroll the neighborhood or downtown. Walking tours of historic Montford, Riverside Cemetery, Biltmore Village and downtown Asheville.

- 777-1014.

Raven Invasive Plant Management

Saving trees and native plants from non-native invasives. Raven IPM is a local, organic, woman veteran-owned business specializing in mechanical removal of invasive plants. No chemicals, just hard work. • (828)866-3200 • RavenNC.com

Smart Feller Tree Works

Down trees got you down? Contact us for all your tree removal and pruning needs! We are locally licensed and insured. Please call for free estimates. Montford references available. Thanks.

- 828.545.5503

Square Peg Construction Inc.

Add beautiful custom woodwork to your historic home: New upgrades like wood paneling, built-in cabinetry, trim, doors, stairs and railings. Small details add big impact! Montford references.

- Call your neighbors, Leslie and David Humphrey 277-5164

SAVE THE DATE
FOR THE
2024 ASHEVILLE
GREEK FESTIVAL
FRIDAY 9/27 &
SATURDAY 9/28

NiNE
MiLE
ninemileasheville.com

BRIAN DOOLEY

GUITAR
Performer/Teacher
516-492-0921
BrianDooleyGuitar@gmail.com
BrianDooleyMusic.com/lessons

Paul Dixon
828.215.7772
PDIXON77@YAHOO.COM

COMMERCIAL ■ RESIDENTIAL ■ INTERIORS
EXTERIORS ■ LICENSED



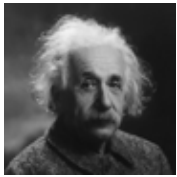
*Join The
Montford Listserve*

The Montford listserv is a neighborhood discussion list. This is the place where you can exchange news about the neighborhood.

Visit <https://montford.org/montford-listserve/>



Pack Memorial Library 67 Haywood Street in downtown Asheville



“The only thing that you absolutely have to know, is the location of the library.”
—Albert Einstein

Are you new to the neighborhood or has it been a long time since you last visited Pack Memorial Library in downtown Asheville? There are endless resources to explore or to discover:

- **Over 150,000 items available for browsing and lending.** These resources include books, periodicals, CDs, DVDs, and research materials. The library also participates in statewide resource sharing and offers inter-library loans.
- **Free internet access, public computing, and Wi-Fi.** Photocopy and printing services are available for a small fee.
- **Free laptop and hotspot lending program.** Laptops and hotspots are now available for a free 30 day loan with a library card.
- **Free tickets to local attractions.** Use your library card to sign up for Zoom passes, which are free tickets to local attractions like the WNC Nature Center, the NC Arboretum, or the Asheville Museum of Science.

- **Free digital audiobooks, e-books, magazines, and movies.** The Libby app from Overdrive provides downloads of these items to your smart phone, tablet, or computer. It's like an Audible subscription service, but free with your library card.

- **A vibrant and inviting children's library.** The library has books for all ages and reading levels, and board games, and sporting equipment available to lend.

- **Thousands of unique local historical records, photographs, maps, and memorabilia.** The Buncombe County Special Collections Library provides researchers the resources and expertise they need to understand and interpret the history of Western North Carolina.
- **Bookends Used Bookstore offers bargain prices for a wide variety of books and media, including vintage and collectible materials and bestselling fiction.** Proceeds from the sales benefit the library programming.

For more information, visit the library or their website:
<https://www.buncombecounty.org/governing/depts/library/branch-locations/pack-memorial.aspx>

Parking in the Civic Center parking ramp is free for the first hour. The library is also walkable from the Montford neighborhood.

SQUARE PEG

We're Different



828-277-5164

FINISH CARPENTRY
CABINETS
DESIGN
□
Asheville

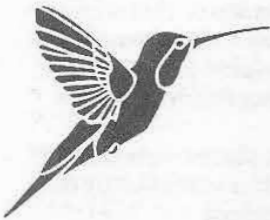
From The Archive

MONTFORD

VOL. 2 NO. 12

THE NEWSLETTER OF ASHEVILLE'S MOST HISTORIC NEIGHBORHOOD

SEPT. 1997



Featured on the garden tour are:

- Abbingdon Green B&B Inn at 46 Cumberland Circle (the 1997 winner of the Men's Garden Club/Quality Forward "Best New Garden" Award)
- 278 Cumberland Ave. owned by Kelsey Woodward
- 286 Cumberland Ave. owned by Yvonne Fish and Daniell Pequinot
- 150 Cumberland Ave. owned by Gerald and Robin Green
- 91 Elizabeth St. owned by Chip Smith
- 17 Cullowee owned by Ray and Jerri Hill
- 24 Soco owned by W.C. Justice and Robert Draughon (1997 winner of Men's Garden Club/Quality Forward "Small Landscape Design" Award)
- The Wright Inn at 235 Pearson Dr. (1997 winner of a Quality Forward "Environmental Excellence" Award)

MONTFORD HOSTS GARDEN TOUR

BY SUSIE VAN DER VORST

It all started with a porch meeting for the revitalization of Magnolia Park. There were only three of us sipping pina coladas — as we often do at these meetings as a sort of bribery to get people to attend.

"What can we do to raise money and interest in this run-down park," someone asked. "Well, so many people have said a Garden Tour would be a good fundraiser, but no one has done one yet," said another. The three of us "garden gals" (we decided to call ourselves) were up for the challenge.

Next we brainstormed and came up with a list of neighborhood gardens that would be appropriate for a tour. Our assignment was to contact these home owners and ask their permission. (Time for another pina colada.) Next we set a date, and made a list of possible "garden gals" to recruit.

The following day as I was calling people on my list, I was given a tip that a few residents were already interested in organizing such an event. I called them quickly. Yes, they were interested, but only if the funds generated went toward Montford's legal fees that accumulated when neighbors were fighting against the

Montford Convenience Store renewing its liquor license. Good idea.

More telephoning and soon our group of three had doubled. The next meeting we talked about and decided that \$1 of each \$10 tour ticket would be donated to the Magnolia Park revitalization effort — which means the tour would benefit two very important efforts. This porch meeting was a little more tame — white wine, lemondade, and cookies instead of pina coladas!

Thankfully, one of our community's saints offered to design the poster, tickets, and send out press releases. We now have eight confirmed gardens on the tour, tickets being sold, and posters distributed. We're well on our way to a successful fundraiser — and it hasn't taken much time at all.

Event planning is a great way to meet people in the neighborhood. If everyone would volunteer just an hour a week, we could get so much accomplished in Montford, and the burden would be lessened on the few dedicated people that are always involved. Plus, what could be more enticing than a relaxing meeting on some of Montford's beautiful porches?

HIDDEN GARDENS TOUR: WHEN AND WHERE?

September 13 (Rain Date: September 14) from 10 a.m. until 3 p.m. Tickets are \$10 and can be purchased at the Montford Resource Center, Reems Creek Nursery, B.B. Barnes, and Southerlands. Or, tickets can be purchased on the day of the tour at any of the gardens. Call the MRC at 255-4946 or Susie van der Vorst at 259-9878 for more information.

NEWS & VIEWS

A DONATION of \$2/month per resident is required to continue operation of the Montford Resource Center and publication of MONTFORD. Please mail your donation to MRC, 235 Montford Ave., Asheville, NC 28801. Thank you!

THANK YOU! to those residents who have donated funds to assist in the maintenance and operations of the Montford Resource Center; and ... thank you to the four Bed and Breakfasts that have donated \$200 or more to help pay for the Montford Legal Fund's debt. These contributions are greatly appreciated.

Our apologies for omitting Officers Rick Ingle and Mike Godwin from last month's P.A.C.T. Team photograph.

- **NEWS:** Montford residents have seen a lot of flashing blue lights lately. Since the speed limit was changed from 35 mph to 30 mph on Montford Ave., the Asheville Police Department has been busy enforcing the new speed limit. In July, APD issued more than 30 speeding tickets. So, slow down or risk a \$70 or higher fine.
- **NEWS:** Prostitutes and johns have been a problem around Flint and Cherry Streets. Residents held a meeting with the P.A.C.T. Team and are involved in curbing this activity. Starnes residents Sharon Wallace and Tim Johnson rounded up neighbors for the meeting and voiced their concerns to police. Chief Annarino has stated that when community residents are serious about getting involved in putting an end to crime and nuisance problems, they will be heard. As Officer Mack Creson pointed out, "Our slogan is 'Police are the community and the community are the police.' Involvement does make a difference."
- **VIEWS:** Thank you to all residents for adding flowers to public places, uncovering overgrown sidewalks, planting street trees, picking up trash, and thus contributing to all of us in the neighborhood. Every little bit helps to improve Montford.
- **NEWS:** Many of us have had our cars broken into in the last six months. One resident had a man at her door panhandling. Later that evening her car was broken into. She could not charge him on the theft offense because she had not seen him, but she did take out a warrant for panhandling. She picked him out of a line-up. He then confessed to breaking into cars. Eighteen Montford cases were attributed to him. Thanks to this one resident who did something.
- **NEWS:** At least one case has been reported of a purse being stolen out of someone's home while they were out taking a walk. The resident left the front door unlocked but not open. If you notice anything suspicious taking place around your home or a neighbor's home, call the police at 259-5870 immediately.
- **NEWS:** The Halloween Haunted House Committee met last month to discuss plans for October's event. We would like to solicit donations from the community. The following items are needed: plastic pipe less than 2" in diameter; candy; sheets (white or solid); duct/scotch tape; fishing line; artificial cob webs; large canvas back drops on which to paint; volunteers; activity ideas for children too young to participate. Call Betsy Simpson at 253-8048.



P.A.C.T. Team Officer Tim Splain during a traffic stop in Montford.

MARK YOUR CALENDARS!

- September 10 at 7 p.m. MRC Board of Directors Meeting at MRC. To add item to agenda, call 252-5809.
- September 15 at 7:30 p.m. CAN Meeting at Trinity Episcopal Church. 251-1477.
- September 17 at 7 p.m. Historic Montford Community Potluck. Slide presentation of historic homes by photographer Mary Jo Brezny. Greek Center on Cumberland Ave. 252-5572.
- September 20 from 9 till Noon. Montford Ave. Cleanup, sponsored by the Montford Garden Club. If you can't help pick up trash on Montford Ave., please pick up around your own home. (Rain Date: September 27)
- October 15 at 7 p.m. at MRC. Montford Garden Club meeting. Group will be meeting quarterly instead of monthly to plan more projects. Call Gerald Green at 253-9729.

WILDLY INCLUSIVE CHURCH OPENS IN THIS WILDLY INCLUSIVE NEIGHBORHOOD

On June 15, the Circle of the Wildly Inclusive God began its ministry. The Circle is an intentional, interfaith community that offers a sacred space for healing rituals of silence, sound, music, movement, meditation, and reflection.

The Church, currently located at the Homewood School Building, 19 Zillicoa Street in Montford's Highland Park, was founded by Kathryn Cartledge — a resident of Cumberland Ave. — and Janis Costas. Kathryn is an ordained Presbyterian minister with a background in pastoral care and counseling. Janis received her Masters of Divinity from Yale Divinity School, as well as a Masters of Social Work from Boston University.

The Circle wishes to honor all sacred traditions and in doing so, honor, support, and encourage each one's spirituality. Kathryn feels there is a need in this community for people who may or may not identify themselves as Christians, but who are searching and journeying on their own spiritual paths — who miss the rituals of community worship.

Service is at 9:30 a.m. every Sunday. "The Circle invites the wildly diverse community of Montford. Everyone is welcome, so please come!" says Kathryn.

SOS AT THE MRC

This summer marked the second year in which the MRC provided space for the students of the SOS (Support Our Students) program. SOS is an afterschool program aimed at helping middle school students with homework (during the school year) and structured play and educational play (during the summer). While the winter program is held at the Tabernacle Missionary Baptist Church and focuses on tutoring, the MRC was used this summer as a place to eat lunch and listen to a variety of speakers. Managed by the YWCA, SOS relies on volunteers. Call 254-7206 for more information.

KNOW YOUR ORDINANCES

Did you know that you can do something about the junked cars around our neighborhood? Did you know that you don't have to put up with panhandlers? There are ordinances designed to protect the rights of residents. Ordinance No. 2373 states that the City is authorized to regulate, restrain, or prohibit abandoned and junked motor vehicles on public and private property. Ordinance No. 2000 states that it is unlawful for any person to ask, beg, or solicit contributions or to exhibit oneself for the purpose of begging or soliciting contributions by accosting another or forcing oneself upon the company of another. You can take action by filling out a report at the MRC. For a complete copy of these ordinances, call 255-4946.

WHAT'S COOKING?

"Sangria" (The Perfect Afternoon Porch Drink)


Spoon full of sugar
Juice of a lime, lemon, and orange
White grapes, sliced in half
One plum, diced
One nectarine, diced
Strawberries, quartered
One orange, quartered
Any red wine
Bottle of red wine
Ice
Mix well and enjoy!

This recipe donated by Susie van der Vorst of 156 Cumberland Ave.

THIS ISSUE SPONSORED BY:

Historic Resources Commission's Application Deadlines are: August 26 for the September 10th meeting and September 23 for the October 8 meeting. HRC meetings are on the second Wednesday of every month at 4 p.m. at the Asheville City Hall, 5th Floor.

Hypnosis: The Awakening into the Window of Your Mind



Call Lesley-Anna
Certified Hypnotherapist
704-251-5233

BRIAN C. HUNTER
CERTIFIED PUBLIC ACCOUNTANT

BRIAN C. HUNTER, CPA, PA.
125 CHERRY STREET
ASHEVILLE, NC 28801


TELEPHONE (704) 232-1130
FAX (704) 232-1124

• PAGES Book Fair • PAGES Book Fair PLUS • PAGES Publishing Group • Books on Break

Ken Richards
Marketing/Distribution Representative

428 1/2 Haywood Road
Asheville, NC 28806

Warehouse: 704-254-0657
800-678-7802
E-mail: krichards@pagesinc.com



PAGES
The Original SCHOOL BOOK FAIR'S Company

• PAGES Incorporated

• 100 Book Fair • Great Book Program • Junior Library Guild • National Library Service

THE READER'S CORNER		
USED BOOKS, RECORDS & CD'S		
MON - FRI 11-7	SAT 10-6	SUN 1-6
31 MONTFORD AVE.	ASHEVILLE	704-285-8805

<p>"Poetry heals the wounds inflicted by reason."</p> <p>- Novalis</p>	<p>The Captain's Bookshelf, Inc.</p> <p>31 Page Avenue Asheville, NC 28801 (704) 253-6631 Phone (704) 253-4917 Fax captbooks@aol.com</p>
--	--

SMART FELLER TREEWORKS

828.545.5503 smartfeller treeworks.com

Open 11-5 everyday

Downtown Books & News
67 North Lexington Avenue
www.dbnbooks.com

FRUGALFRAMER

YOUR ART. / OUR PASSION.

Downtown AVL/Monford | 95 Cherry St. North
South Asheville | 200 Julian Shoals Dr. #20

frugalframer.com

LOGAN
RESTORATION & CONTRACTING

Michael Logan
828.707.8877
michael@ashevillerestoration.com

a licensed, insured, and lead-safe company
Historic Window and Door Restoration specialist

The Montford Newsletter is published online by the Montford Neighborhood Association, P.O. Box 7181, Asheville, NC 28802, for the residents of Asheville's first historic neighborhood. We welcome articles and advertising by the 20th of the month.

Note: Opinions expressed in this newsletter by contributing authors do not necessarily reflect the official policy or position of the MNA.

Contact Editor Kelly Ross Terry at krtgraphicdesign@gmail.com, 230-7439 for more information.