



# MONTFORD

THE NEWSLETTER OF ASHEVILLE'S MOST HISTORIC NEIGHBORHOOD  
Vol. 29 No. 03 MARCH '24

## Welcome March



### INSIDE

**Tempie Avery Center...2**

**Earth Day Spruce-up...2**

**Montford Neighborhood  
Supper Club...4**

**Neighborhood  
Directory...5**

**USS Asheville...6**

**Green Corner...7**

**Goats on the Greenway...8**

**HRC...9**

**Pack Library...10**

**Easter...11**

**Resource Directory...11**



## TEMPIE AVERY MONTFORD CENTER

### Calendar

#### Art in the Park

Friday, April 12 from  
5-7pm. \$10 for Ages 40+.  
Location: Montford Park.

#### Pizza and Trivia Teen Night

Friday, March 15  
from 6:30-8pm. \$5 for Ages  
14-18.



#### Lil' Picasso's Toddler Art

Wednesdays, April 10, 17,  
and 24 from 1:30-2 pm.  
\$5/ class for Ages 3-5  
accompanied by parent/  
guardian.



#### Blast for the Past Adult Game Time

Sunday, April 14 from 2-4 pm. \$5 for Ages 20-50.

#### Toddler Craftin' Through the Season

Wednesdays, March 13 and April 10 from 6-7 pm. Free  
for Ages 3-5 accompanied by parent/guardian.

#### For more Information Contact:

Seth Jackson - Recreation Facility Manager - Tempie Avery Montford Center - Asheville Parks and Recreation  
Office: 828-253-3714, Business Cell: 828-337-2403, Email: [sjackson@ashevillenc.gov](mailto:sjackson@ashevillenc.gov)

### Earth Day Spruce-up

Join your fellow Montford  
neighbors for an Earth Day  
spruce-up on Saturday, April  
20 from 9:00am-11:00am.

We'll concentrate on:

Beautifying the traffic islands at All Day Darling  
and Montford Park and removing litter in these  
areas.

Sprucing up all the plantings by the corner store  
and removing litter in these areas.

Picking up trash at Magnolia Park, Hummingbird  
Park, Montford Park, the Waneta Garden, and along  
the Reed Creek Greenway removing litter along  
streets in these areas.



Please let me know if you plan to participate by  
Wednesday, April 10, here or by text/phone,  
at 828-474-5120.

Happy Spring!!  
Mitch Russell



Premier | Sotheby's  
INTERNATIONAL REALTY

MILLIE FARMER

LOCAL EXPERTISE, WORLD-CLASS SERVICE



**828.712.2400**

**GrizzlybearArborcare.com**

**GRIZZLYBEAR  
ARBORCARE**

*tough love for trees*

## Montford Neighborhood Supper Club

The Montford Neighborhood Supper Club formed from the Montford Neighborhood Directory. The club held its first event on February 18<sup>th</sup> with a Meet and Greet potluck. Twenty-five (25) neighbors came together for great food and a good time. The group currently has forty-three (43) members who will be meeting at each other's homes, local restaurants and outdoor events. Flexibility is the key word as each member is encouraged to organize an event based upon their interests, availability and number they can accommodate. We hope to have frequent events such that everyone can participate throughout the year. We will be updating our invitation list frequently as new members indicate their interest within the directory. Come join us!



To date, we have 130 neighbors who have signed up for the Montford Directory, and we invite you to join as well. Neighbors have already started forming social groups using the Directory. Neighbors with these interests: Book Clubs – 53, Wine Club – 30, Hiking – 66, Yoga – 38, Tennis – 16, Pickleball – 21, Gardening – 47, Crafts – 18, Cooking – 43, Baking – 26, Woodworking – 9, Painting – 13, Dog Playdates – 15, Children Playdates – 11, and more! If you would like to join, simply send an email to [montford.directory@gmail.com](mailto:montford.directory@gmail.com). Then use the directory to reach out to others with similar interests.

Any groups that meet are encouraged to send a write up to Ross Terry at [krtgraphicdesign@gmail.com](mailto:krtgraphicdesign@gmail.com) so he can include in upcoming newsletters.





## Introducing the Montford Neighborhood Directory

**Would you like to get in touch with your neighbors more easily?**

**Do you have hobbies or special interests that you would like to share with others?**

**Do you want to be more involved in the Montford community?**

If you answered yes to any of these questions, the Montford Neighborhood Directory is for you. The Montford Neighborhood Association has created an online directory, making it easy to do all of the above. It is a secure directory which is stored on Google Docs, so you will need a Google account to access the directory. No Gmail is required, just a Google account. No Google account? No problem, it is a few easy steps to create one and you can keep your old email address.

To date, we have 130 neighbors who have signed up, and we invite you to join as well. Neighbors have already started forming social groups using the Directory. They have expressed interest in Book Clubs, Supper Club, Wine Club, Hiking, Yoga, Tennis, Gardening, Crafts, Cooking, Baking, Woodworking, Painting, Playdates and more. If you would like to join, simply send an email to [montford.directory@gmail.com](mailto:montford.directory@gmail.com)

Hello

*Spring!*

The market is blooming...  
Let's meet up & discuss your real estate goals!



CATE SCALES - BROKER  
828.280.1576 cell  
828.318-8313 office  
[www.nestrealty.com/catescales](http://www.nestrealty.com/catescales)

**NEST REALTY**





## Join The Montford Listserve

The Montford listserv is a neighborhood discussion list. This is the place where you can exchange news about the neighborhood.

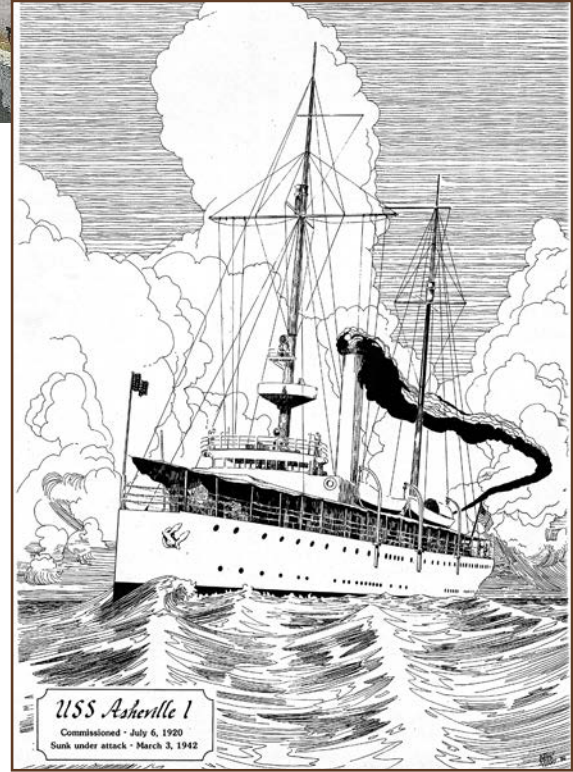
Visit <https://montford.org/montford-listserve/> to join.



## USS Asheville PG-21 Memorial Ceremony

The PG-21 was the first U.S. Navy ship bearing the Asheville name. On March 3, 1942, her entire crew of 160 were lost in valiant combat with three enemy warships returning from the attack on Pearl Harbor. The pace of that war precluded a proper recognition of her valiant effort.

The North Carolina Submarine Museum Foundation, in partnership with the City of Asheville, hosted the USS Asheville PG-21 Memorial Ceremony on Sunday, March 3, 2024. A monument commemorating the crew of the PG-21 was unveiled at Riverside Cemetery in the historic Montford neighborhood.



View the crew list of the USS Asheville lost on March 3, 1942

<https://montford.org/wp-content/uploads/2024/03/PG-21-Commemoration-Program-page2.pdf>

< Watch a video of the Memorial Ceremony at Riverside Cemetery

<https://www.youtube.com/watch?v=2gjAU8JS--E&t=1s>



Paul Dixon  
828.215.7772

PDIXON77@YAHOO.COM

COMMERCIAL ■ RESIDENTIAL ■ INTERIORS  
EXTERIORS ■ LICENSED

**Montford  
Convenience Store**  
*Your local neighborhood store*

### Hours:

Monday thru Saturday - 8am to 11pm  
Sunday - 9am to 10pm

231 Montford Avenue • phone 828-258-1879



## Green Corner

Erin Hiatt

For this month's Green Corner, let's take a look at a chore that most of us do in some form almost every day: dishes.

Hopefully you already use reusable tableware over disposable for obvious reasons. Beyond that, there are several [scientifically-proven ways](#) to reduce the impact of your dishwashing – and in many cases, improving the resource use efficiency also means getting a better clean.



### Handwashing

- Opt for a non-plastic sponge or brush – plastic options not recyclable or compostable and they often shed microplastics as they're being used.
- Do not run the tap while washing dishes. Even newer faucets use up to 2 gallons per minute.
  - > Try the **“two basin” method** (see partway down [this article](#)) – one basin for suds, one for a cool rinse. This will reduce your emissions and water by around 2/3 compared to running the tap. It's also the only hand-washing method more water efficient than a dishwasher.
- Let dishes air dry when you can.



### Dishwashers

- Scrape off, rather than rinse, any food chunks – ideally into a compost bin. Modern dishwashers have sensors that adjust the wash cycle to match the dirtiness of the dishes. If your dishes “look” too clean, the cycle won't be sufficiently rigorous.
  - > **Hate the feeling of silverware on dishes when scraping?** Try a bamboo or silicone pot, pan or bowl scraper. You can pop the latter in the dishwasher too, to sanitize.

- > **Can't imagine your dishwasher managing to clean a non-rinsed dish?** It might be that you need to [clean your dishwasher filter](#) more regularly because it's clogged or dirty.

- [Load the dishwasher properly](#)

- > The top rack is for cups, glasses, smaller items, and any dishwasher-safe plastic. Bottom rack heat on plastic can cause warping (and releases more chemicals).
- > The bottom rack is for all other sturdier, non-plastic, larger items. Place the dirty side of dishes toward the middle – or face down for the strongest clean.
- > For silverware baskets, place handles down (but knife handles up to avoid injury). Mix silverware so that they don't nest/spoon, impairing cleaning.
- > Overall, make good use of the space but don't overcrowd.
- > Once the load is done, unload the bottom rack first so that water doesn't splash on them from items on the top rack.
- Forego a heated dry setting if you can, which significantly reduces energy use.
- Run your dishwasher overnight when energy demands are lowest, reducing strain on (and emissions from) power plants.



Regardless of method, consider a refillable, natural dishwashing soap or detergent, and rinsing agent from a local refill store like Ware or To the Brim to avoid the plastic impact of your packaging and limit your family and the environment's exposure to harsh chemicals.

*Happy dishwashing!*

You can find past Green Corners on the Newsletter Archive page.

## Goats on the Greenway

**Karen MacNeil**

Montford Neighborhood Association (MNA) is excited to announce our next phase of environmental stewardship and new partnership with Mountain Goatscapes.

This spring we will be welcoming goats to the Reed Creek Greenway! Goats excel at removing invasive plants which in turn will help restore the health of our trees and enhance biodiversity in our neighborhood. You will notice the new arrivals making themselves at home in the sunny greenspace on the south side of Cauble Street towards the end of April.

Goatscaping is a continuation of MNA's work with Kudzu Culture to build community while learning how to harvest and use all parts of the kudzu plant, especially the root crowns! Last year our efforts were funded by a City of Asheville Neighborhood Matching Grant and included contracting with Raven Invasive Plant Management to remove invasive plants from the area around the pedestrian bridge between Cauble and Ocala St. To match

that grant money in volunteer hours, the MNA organized participation from 59+ volunteers at 4 community events, the removal of 200+ kudzu root crowns from Reed Creek

Greenway (along with 20+ bags of trash), and an Invasive Species Awareness Week proclamation passed by City Council on Feb 14 in 2023.

For 2024, Montford Neighborhood Association is funding the goatscaping and the Holy Trinity Greek Orthodox Church has pledged support for our educational outreach initiatives. Please stay tuned for upcoming workshops led by Kudzu Culture that teach volunteers how to identify, harvest, and use kudzu for both culinary and craft purposes.

For those interested in learning more and contributing, the MNA is adding a Friends of the Reed Creek Greenway tab to our website and will be giving updates at meetings about this project. Please visit the MNA website at <https://montford.org/> or email Karen at [urbanforestalliance@gmail.com](mailto:urbanforestalliance@gmail.com).

For more information on our wonderful partners:

<https://www.mountaingoatscapes.com/>

<https://kudzuculture.net/>

<https://ravennc.com/>



HAPPY  
*St. Patrick's Day*





## Historic Resources Commission of Asheville and Buncombe County

### Montford Action Agenda 03/13/24

**Present:** Sioux Oliva (Chair), Will Hornaday (Vice-Chair), Annie McDonald, Maria DeSasi, Amy Moxley, Claire Thomas, Sara Gross, Celesta Gormon, Jenny Bowen, Chris German

**Staff Present:** Alex Cole, Madelyn Stone, Jannice Ashley

### Item, Summary and Action

**273 Pearson Drive** - Subdivision of existing 1.32 acre parcel into a new 0.27 acre vacant parcel and

a new 0.936 acre parcel with existing primary and accessory structures.

**Action**—Approved: Unanimous

**5 East Waneta Street** - Enclosure of portion of an existing porch on rear elevation.

**Action**—Approved: Unanimous

**230 Cumberland Avenue** - Construction of a new one-and-a-half story, 1,584 square foot accessory structure.

**Action**—Approved: Unanimous

### HRC Application Portal

The city is now accepting HRC applications digitally via the Development Portal at this address:

<https://develop.ashevillenc.gov/>

Please refer to the website ([www.ashevillenc.gov](http://www.ashevillenc.gov)) for the full approved minutes after the following month's meeting.

*Live in a work of art<sup>®</sup>*

Luxury Renovations • Home Maintenance • Custom New Builds



**BEFORE**

**MK**

**MORGAN•KEEFE**  
BUILDERS

ESTABLISHED  
1980

[MORGANKEEFE.COM](http://MORGANKEEFE.COM)

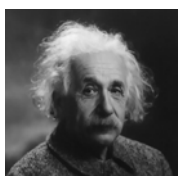


**AFTER**



## BUNCOMBE COUNTY LIBRARIES

### Pack Memorial Library 67 Haywood Street in downtown Asheville



***"The only thing that you  
absolutely have to know, is  
the location of the library."  
—Albert Einstein***

Are you new to the neighborhood or has it been a long time since you last visited Pack Memorial Library in downtown Asheville? There are endless resources to explore or to discover:

- **Over 150,000 items available for browsing and lending.** These resources include books, periodicals, CDs, DVDs, and research materials. The library also participates in statewide resource sharing and offers inter-library loans.
- **Free internet access, public computing, and Wi-Fi.** Photocopy and printing services are available for a small fee.
- **Free laptop and hotspot lending program.** Laptops and hotspots are now available for a free 30 day loan with a library card.
- **Free tickets to local attractions.** Use your library card to sign up for Zoom passes, which are free tickets to local attractions like the WNC Nature Center, the NC Arboretum, or the Asheville Museum of Science.
- **Free digital audiobooks, e-books, magazines, and movies.** The Libby app from Overdrive provides downloads of these items to your smart phone, tablet, or computer. It's like an Audible

subscription service, but free with your library card.

- **A vibrant and inviting children's library.**

The library has books for all ages and reading levels, and board games, and sporting equipment available to lend.

- **Thousands of unique local historical records, photographs, maps, and memorabilia.**

The Buncombe County Special Collections Library provides researchers the resources and expertise they need to understand and interpret the history of Western North Carolina.

- **Bookends Used Bookstore offers bargain prices for a wide variety of books and media, including vintage and collectible materials and bestselling fiction.** Proceeds from the sales benefit the library programming.

For more information, visit the library or their website:

<https://www.buncombecounty.org/governing/depts/library/branch-locations/pack-memorial.aspx>

Parking in the Civic Center parking ramp is free for the first hour. The library is also walkable from the Montford neighborhood.

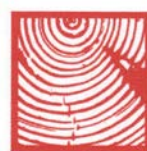
# SQUARE PEG

**We're Different**



**828-277-5164**

**FINISH CARPENTRY  
CABINETS  
DESIGN  
□  
Asheville**



# LOGAN

**RESTORATION & CONTRACTING**

Michael Logan

828.707.8877

michael@ashevillerestoration.com

a licensed, insured, and lead-safe company

**Historic Window and Door Restoration specialist**





## Why is Easter Early This Year?

Easter and other religious holidays related to it — Ash Wednesday, Palm Sunday, and Good Friday — are called “moveable feasts.” This means that they are not fixed dates on the calendar. Instead, these holidays are assigned according to what’s called a lunisolar calendar, which aligns the moon’s phases as well as the sun’s position in the sky. Passover and other Jewish holidays also adhere to the lunisolar calendar.

Western Easter is the first Sunday after the first full moon after the equinox, while Eastern Easter is after Passover. This year, Easter will be held on Sunday, March 31, for Western Christians and on Sunday, May 5, for Eastern Orthodox Christians.

Learn More> <https://www.farmersalmanac.com/>

## Resource Directory

### Historic Walking Tours

Stroll the neighborhood or downtown. Walking tours of historic Montford, Riverside Cemetery, Biltmore Village and downtown Asheville.

• 777-1014.

### Raven Invasive Plant Management

Saving trees and native plants from non-native invasives. Raven IPM is a local, organic, woman veteran-owned business specializing in mechanical removal of invasive plants. No chemicals, just hard work. • (828)866-3200 • RavenNC.com

### Smart Feller Tree Works

Down trees got you down? Contact us for all your tree removal and pruning needs! We are locally licensed and insured. Please call for free estimates. Montford references available. Thanks.

• 828.545.5503

### Square Peg Construction Inc.

Add beautiful custom woodwork to your historic home: New upgrades like wood paneling, built-in cabinetry, trim, doors, stairs and railings. Small details add big impact! Montford references.

• Call your neighbors, Leslie and David Humphrey 277-5164










**828.545.5503 smartfellertreeworks.com**

Open 11-5 everyday



Downtown Books & News  
67 North Lexington Avenue  
[www.dbnbooks.com](http://www.dbnbooks.com)

**FRUGALFRAMER**



**YOUR ART. / OUR PASSION.**

Downtown AVL/Montford | 95 Cherry St. North  
South Asheville | 200 Julian Shoals Dr. #20

[frugalframer.com](http://frugalframer.com)

### NEWSLETTER AD RATES

Contact Ross Terry at [krtgraphicdesign@gmail.com](mailto:krtgraphicdesign@gmail.com)  
or call 230-7439 to place an ad.

SIZE	RATE/ISSUE
Business Card	\$35
1/4 Page	\$60
1/2 Page	\$100
Full Page	\$200

*The Montford Newsletter* is published online by the Montford Neighborhood Association, P.O. Box 7181, Asheville, NC 28802, for the residents of Asheville's first historic neighborhood. We welcome articles and advertising by the 20th of the month.

Note: Opinions expressed in this newsletter by contributing authors do not necessarily reflect the official policy or position of the MNA.

Contact Editor Kelly Ross Terry at [krtgraphicdesign@gmail.com](mailto:krtgraphicdesign@gmail.com), 230-7439 for more information.