



MONTFORD

THE NEWSLETTER OF ASHEVILLE'S MOST HISTORIC NEIGHBORHOOD
Vol. 28 No. 11

NOVEMBER '23

November



**Montford
Lights!**TM

Kick-Off
4 pm Saturday,
Dec. 2nd, 2023

Holiday^{25TH YEAR}
Tour of Homes

1 -5 pm Saturday,
Dec. 9th, 2023

The Montford Neighborhood Association Invites You to
Join us to celebrate this Holiday Season.



TEMPIE AVERY MONTFORD CENTER

Calendar

AfterSchool Program Youth and Teen

Monday-Friday from 2:30pm-6:00pm - Program runs through May 31, 2024

Art & Soul

Fridays, October 6, November 3 & 17, and December 15, 6:30pm-7:30pm Ages 50 and older Fee: FREE

TAM Game Nights

Fridays, October 20 & December, 8 6:30pm-8:00pm Fee: FREE

Toddler Craftin' Through the Season

Wednesdays, October 4 & 18, November 1 & 15, and December 6 & 20, 5:30pm-6:30pm Fee: FREE

Teen Cuisine

Fridays, October 20, December 1 & 22 6:00pm-7:30 pm Ages 13-18 Fee:\$10/per class

Book Tok

Tuesdays, November 7, and December 5, 6:00pm-7:30 pm FREE

For more Information Contact:

Seth Jackson
Recreation Facility Manager
Tempie Avery Montford Center
Asheville Parks and Recreation
828-253-3714 - Office
828-337-2403 - Business Cell
sjackson@ashevillenc.gov



828.712.2400

GrizzlybearArborcare.com

**GRIZZLYBEAR
ARBORCARE**

tough love for trees

Premier | Sotheby's
INTERNATIONAL REALTY

MILLIE



WISHING YOU AND YOUR FAMILY
PEACE, HOPE, JOY



MILLIE FARMER

828.215.5543

Millie@PremierSIR.com

MillieFarmer.PremierSothebysRealty.com



Scan the QR code
to view my website



Our Homes

Embark on a self-guided tour through a curated selection of stunning homes, marvel at the intricate details, elegant designs, and cozy atmospheres that make this neighborhood so unique. You'll experience two of our top tier bed & breakfasts, both designed by Biltmore Principal Architect Richard Sharp Smith, entertainment from the Montford Park Players, and a collection of Montford private homes both old and new.

2023 will be the 25th year Montford Holiday Tour of Homes. There will be 8 houses on the Tour—Saturday, December 9, from 1-5 PM.

Visit montfordtour.com for more info and Tour updates.



296 Montford Avenue



135 Cumberland Avenue



230 Montford Avenue



246 Cumberland Avenue



288 Montford Ave. – Black Walnut B&B Inn



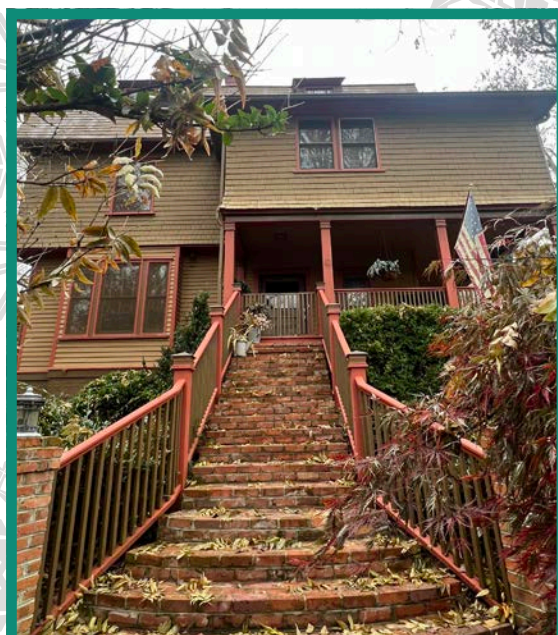
32 Gay Street – Hazel Robinson Amphitheater



281 Pearson Drive



103 Pearson Drive



170 Cumberland Avenue



THE MONTFORD NEIGHBORHOOD ASSOCIATION

25TH YEAR
Holiday
Tour of Homes

We Appreciate Our Sponsors

**Tall John's
Neighborhood Tavern**

Square Peg Construction

**Millie Farmer - Premier
Sotheby's Realty Group**

**Lisa Jackson - Asheville
Realty Group**

Cate Scales - Nest Realty

JAG Builders

**Jody Whithurst - Town &
Mountain Realty**



Will bears find a good winter den at your place?

Visit BearWise:

<https://bearwise.org/will-bears-find-a-good-winter-den-at-your-place/>



**SQUARE
PEG**

We're Different



828-277-5164

**FINISH CARPENTRY
CABINETS
DESIGN**

□
Asheville

**NiNE
MiLE**

ninemileasheville.com



Green Corner

Erin Hiatt

With Thanksgiving just around the corner, I've assembled some considerations to greening your holiday gathering.



Plan Ahead to Avoid Food Waste

Note: See the March 2023 Green Corner for more on reducing food waste/composting.

- **Coordinate on the meal** - Abundance may be part of the tradition, but good communication about dietary restrictions and dish preferences can prevent waste (and drama). Avoid unnecessary last minute car trips to packed stores for ingredients by making lists and shopping early for nonperishables.
- **Buy it from the refill/bulk section** - If the holidays are the main time you use certain ingredients, check to see if you still have some and buy only the amount you need. It'll be cheaper and fresher.
- **Bring tupperware** - If you know there will be leftovers, remember your reusable food storage options. Or if zip close style bags - reusable or not - are easiest, prioritize them for food that's easier to clean out so they can be reused more easily.
Remember: plastic food storage bags, once clean and dry, can be recycled at grocery stores in the plastic shopping bag drop off.
- **Get creative with leftovers** - There's an entire corner of the internet dedicated to Thanksgiving leftover recipes worth exploring. Leftover meals don't have to be Thanksgiving flavors on repeat; each could be the backbone for something totally different.
- **Don't force it, freeze it** - There are pro tips online for how to freeze pretty much anything, so you can happily have it again when you aren't sick of eating it.
- **Compost cooking scraps and unwanted leftovers**

Buy Consciously

- **Consider fewer animal products** - While turkey may be non-negotiable for some, [swapping for plant-based options](#) anywhere in the meal is one of the most impactful changes you can make.
- **Try to prioritize positive attributes when buying your food** - Qualities like Fair Trade, humanely raised, local, and organic.
- **Shop with a reusable bag you already own** - Unless your plastic or paper shopping bag displaces a bag you would have definitely purchased anyway, [both are best avoided](#).

Plate Responsibly

- **Use reusable dishware and cutlery** - If you're short on place settings, alongside bringing tupperware, guests could bring their own dishware and cutlery to the meal.
- **If using disposables, buy better** - There are lots of compostable dishware and cutlery options available these days. Opt for bamboo over compostable plastic - it typically requires fewer if any chemicals and is less likely to require industrial composting to break down (which we do fortunately have access to - see March 2023 Green Corner). No paper or plastic plates or cutlery are [curbside recyclable](#) in Asheville.

You can find past Green Corners on the [Newsletter Archive page](#).

You can find past Green Corners on the [Newsletter Archive page](#).

Oops. A correction for the October issue:

Looking at the list of contributors, I saw that I overlooked Cathryn McLeod, who has contributed to the Newsletter.

Forever Montford

Plant a tree for Montford!

Fall is the best time to plant that tree you've been dreaming about, and the MNA will help pay for it. A tree will provide beauty and shade, help lower your summer energy costs, clean the air around you, control storm water run-off, provide forage and shelter for wildlife, and increase the value of your home. It can take many years for a tree to reach maturity, so plan now to protect our future canopy.

The MNA will pay up to 50% of the cost for planting a tree on your property - up to \$150 per tree and up to \$300 total per household. Any Montford property owner, renter or local organization may apply.

Here's how to complete an application and receive reimbursement:

1. Visit Montford.org and the "Links" pull-down tab for a copy of the grant application.
2. Complete and submit the grant application as instructed on grant form.
3. Wait for approval of grant.
4. Purchase and plant your tree/trees (or contract the project).
5. Send an email when project is complete (to lynn.raker@gmail.com).

When selecting your trees, think native. An integral part of nature's food chain, Native tree species are more beneficial to our ecosystem. A list of native canopy and understory trees, evergreen and deciduous, may be found at the end of in the Montford Historic District Design Review Standards:

https://drive.google.com/file/d/1shfSDGJQ_r0cjzCrtLnh017Mg8GCip6F/view

Make your tree-planting plans soon! Award of grants is at the discretion and funding availability of the MNA.



Paul Dixon
828.215.7772

PDIXON77@YAHOO.COM

COMMERCIAL ■ RESIDENTIAL ■ INTERIORS
EXTERIORS ■ LICENSED

Montford Convenience Store

Your local neighborhood store

Hours:

Monday thru Saturday - 8am to 11pm
Sunday - 9am to 10pm

231 Montford Avenue • phone 828-258-1879

Forever Montford

WELCOME PACKET

Dan & Judith Sanford

Forever Montford, a committee of the Montford Neighborhood Association (MNA) has created a Welcome Packet for new Montford residents. The packet contains information such as a brief history of Montford, a list of MNA board members along with contact information, Montford listserv, Montford newsletter, neighborhood parks, events, restaurants, maps, volunteer opportunities and much more. Packets are being delivered by MNA board and Forever Montford committee members upon learning of new residents. Recipients of the Welcome Packet have shown great appreciation with one neighboring writing, "Looks like we lucked out in the neighbor and neighborhood department! I appreciate the history and local information. Well done, and thank you for your thoughtfulness."



If you are new to Montford or know of a new resident, please contact one of the below, and we will coordinate delivery of a Welcome Packet.

- Dan Sanford: sanford.danielj@gmail.com
- Judith Sanford: sanford.judith@gmail.com
- Leslie Humphrey: leslieinmontford@gmail.com
- Ashima Nair: ashimanair@gmail.com

Live in a work of art[®]

Luxury Renovations • Home Maintenance • Custom New Builds



BEFORE



AFTER

MK
MORGAN • KEEFE
 BUILDERS
ESTABLISHED 1980
MORGANKEEFE.COM

Montford Community Meeting Minutes

Wednesday, October 25, 2023

President Leslie Humphrey called the meeting to order at 6:31 PM.

Halloween

- Kids will start arriving for trick or treating around 4:00 PM on Tuesday, 10/31.
- Leslie encouraged community members to keep lights on and put out traffic cones if they had them to keep cars separated from the kids.

Stumptown Reunion 10/21 Update

- The organizers Rasheeda Hall & Ami Worthen were not able to attend.
- Leslie reported that a successful event was held that celebrated and captured oral histories about the Stumptown neighborhood area.
- For the event, the MNA contributed \$400 plus food and drinks left over from our recent event.

APD Community Resource Officer Report

- Officer Chris Strumolo substituted for our regular officer, who is on maternity leave.
- The city has put out speed boards on Montford Ave. 85% of cars are driving around 30 mph or less. A few cars go 50 mph or more. Most speeding happens after 1:00 AM. These speeds generally do not merit traffic calming measures.
- The APD has issued 72 speeding citations in our area over the last three months.
- The APD is still 40% short of personnel.
- Car break-ins are still a problem in the neighborhood.
- People with comments or questions can contact the police at apdcommunityengagement@ashevillenc.gov.

Reed Creek Greenway update

- Haley Burton, who is a City of AVL Transportation Planner, addressed the meeting.
- There is planning going on to connect the Reed Creek Greenway to Woodfin.

- There is planning going on for a neighborhood walking path around Hill St.
- They are looking into a way to connect the Reed Creek Greenway to downtown. Flint St. is a possibility.
- A map showing these tentative changes is attached.
- A neighbor raised the issue that the Reed Creek Greenway is not being maintained as it should be.

Review of Sustainability Symposium

- Susan Loftis gave a report
- The event had a decent turnout with lots of good discussion.
- There were many people from the city and university that brought their expertise.
- An initiative to reduce plastics came out of the forum.
- Neighbors were asked to sign a petition of support.

Meet Your Neighbor Day results

- Tom Fehsenfeld reported that approximately 100 people attended the event on Saturday, October 7.
- Inspired by the National Good Neighbor Day introduced by Jimmy Carter, it was held at two locations.
- Those attending seemed to enjoy meeting their neighbors.
- Cost to the MNA was \$727 for soft drinks, snacks, and printing.
- Similar events will be considered for the spring and fall.
- We will be starting a neighborhood directory to encourage further contact between neighbors.

Neighborhood Cleanup Day

- Leslie Humphrey & Randy Hall reported it will be held on Saturday Nov. 11, 9:30 – noon.
- There will be a rain date on 11/18
- Volunteers are needed: Contact Leslie or Randy for more info. leslieinmontford@gmail.com or cpabanker@yahoo.com
- The focus is on public areas like traffic islands.

Continued on the next page...

Montford Lights

- Marti Boyles reported that the Montford Lights celebration will be held on Saturday, December 2.
- It will start at 4:00 PM at the Hazel Robinson Theater with a short program by the Montford Park Players.
- Participants will then be invited to join a parade led by the Asheville High School Drum Line, and ending at the Montford Garden park with a tree lighting.
- Tree lighting will be at 6:00 PM.
- Community members are encouraged to have their holiday decorations up in time for the event.

Montford Home Tour

- Cate Scales reported the event will take place on Saturday, December 9, 1:00 PM – 5:00 PM.
- There will be eight houses on the tour this year.
- They need people to volunteer to provide baked goods and to act as docents. We also still need sponsors.
- Everything is coming together.
- The Montford Park Players will be involved.
- The Tempe Avery Center will be the location for ticket pick-up.
- Contact Cate@catescales.com to volunteer or sponsor.

Montford Historic District Design Standards

- Bill Eakins led a discussion of the Montford design standards.
- Bill pointed out that the design standards exist within the context of state and federal statutes.
- Alex Cole, the City of Asheville Urban Planner III, from the Historic Resources Commission, presented facts about the standards and how the system works. A summary of her remarks is attached.
- Certificates of Appropriateness (COAs) from the HRC are required for changes in the exteriors of Montford properties.
- COAs are based on the design standards.
- Granting COAs is a quasi-judicial process.
- There is no requirement yet for realtors to disclose that a house is in an historic area – “NC is a buyer beware state.”

- The Secretary of the Interior’s Standards for the Treatment of Historic Properties have been developed and published to add sustainability and disaster adaptability for historic districts.
- Any resident can ask the HRC to revise standards. The HRC decides if a revision will be considered and then decides if it should be made.
- Alex welcomes people to contact her for information on the standards and the process of applying for a COA. She can be reached at 828-259-5638 or acole@ashevillenc.gov.
- Jennifer Cathey, a Restoration Specialist from the State Historic Preservation Office, reported on federal and state historic tax credit programs.
- Part of Montford is a national registered historic district, so buildings are eligible for both state and federal tax credits. Some programs are for owner-occupied buildings and some are for commercial/income-producing properties. Information sheets on tax credits are attached.
- Jennifer is happy to review restoration projects with home and business owners so they can obtain tax credits for their work on historic properties. She can be reached at 828-250-3113 or Jennifer.cathey@dncr.nc.gov.

There were no items requiring action at the meeting.
There was no new business.



The Meeting was adjourned at 8:15pm.
The Next MNA Community Meeting
will be January 24, 2024
Tom Fehsenfeld





Pack Memorial Library 67 Haywood Street in downtown Asheville

“The only thing that you absolutely have to know, is the location of the library.” —Albert Einstein

Are you new to the neighborhood or has it been a long time since you last visited Pack Memorial Library in downtown Asheville? There are endless resources to explore or to discover:

- **Over 150,000 items available for browsing and lending.** These resources include books, periodicals, CDs, DVDs, and research materials. The library also participates in statewide resource sharing and offers inter-library loans.
- **Free internet access, public computing, and Wi-Fi.** Photocopy and printing services are available for a small fee.
- **Free laptop and hotspot lending program.** Laptops and hotspots are now available for a free 30 day loan with a library card.

- **Free tickets to local attractions.** Use your library card to sign up for Zoom passes, which are free tickets to local attractions like the WNC Nature Center, the NC Arboretum, or the Asheville Museum of Science.
- **Free digital audiobooks, e-books, magazines, and movies.** The Libby app from Overdrive provides downloads of these items to your smart phone, tablet, or computer. It's like an Audible subscription service, but free with your library card.
- **A vibrant and inviting children's library.** The library has books for all ages and reading levels, and board games, and sporting equipment available to lend.
- **Thousands of unique local historical records, photographs, maps, and memorabilia.** The Buncombe County Special Collections Library provides researchers the resources and expertise they need to understand and interpret the history of Western North Carolina.
- **Bookends Used Bookstore offers bargain prices for a wide variety of books and media, including vintage and collectible materials and bestselling fiction.** Proceeds from the sales benefit the library programming.

For more information, visit the library or their website: <https://www.buncombecounty.org/governing/depts/library/branch-locations/pack-memorial.aspx>

Parking in the Civic Center parking ramp is free for the first hour. The library is also walkable from the Montford neighborhood.



Join The Montford Listserve

The Montford listserv is a neighborhood discussion list. This is the place where you can exchange news about the neighborhood.

Visit <https://montford.org/montford-listserve/> to join.

Resource Directory

Historic Walking Tours

Stroll the neighborhood or downtown. Walking tours of historic Montford, Riverside Cemetery, Biltmore Village and downtown Asheville.

- 777-1014.

Raven Invasive Plant Management

Saving trees and native plants from non-native invasives. Raven IPM is a local, organic, woman veteran-owned business specializing in mechanical removal of invasive plants. No chemicals, just hard work. • (828)866-3200 • RavenNC.com

Smart Feller Tree Works

Down trees got you down? Contact us for all your tree removal and pruning needs! We are locally licensed and insured. Please call for free estimates. Montford references available. Thanks.

- 828.545.5503

Square Peg Construction Inc.

Add beautiful custom woodwork to your historic home: New upgrades like wood paneling, built-in cabinetry, trim, doors, stairs and railings. Small details add big impact! Montford references.

- Call your neighbors, Leslie and David Humphrey 277-5164



Historic Resources Commission of Asheville and Buncombe County

Montford Action Agenda 11/08/23

Present: Chair Sioux Oliva, Vice Chair Will Hornaday, Alexander Ellenbogen, Annie McDonald, Amy Moxley, Maria Delsasi, Sara Groce, Chirs German
Staff Present: Alexandra Cole, Haley Mahoney, Jannice Ashley

Item, Summary and Action

230 Cumberland Avenue - Installation of solar panels on west facing portion of roof.

Action—Approved: Unanimous

HRC Application Portal

The city is now accepting HRC applications digitally via the Development Portal at this address:

<https://develop.ashevillenc.gov/>

Please refer to the website (www.ashevillenc.gov) for the full approved minutes after the following month's meeting.



*Luna the hen
wishes you
a Happy
Turkey!
Day*



Michael Logan
828.707.8877
michael@ashevillerestoration.com

a licensed, insured, and lead-safe company
Historic Window and Door Restoration specialist

SMART FELLER TREEWORKS

828.545.5503 smartfellertreeworks.com

Open 11-5 everyday

Downtown Books & News
67 North Lexington Avenue
www.dbnbooks.com

FRUGALFRAMER

YOUR ART. / OUR PASSION.

Downtown AVL/Montford | 95 Cherry St. North
South Asheville | 200 Julian Shoals Dr. #20

frugalframer.com



We appreciate Archetype Brewery offering a vibrant setting for the Montford Neighborhood Association meetings.

The Montford Newsletter is published online by the Montford Neighborhood Association, P.O. Box 7181, Asheville, NC 28802, for the residents of Asheville's first historic neighborhood. We welcome articles and advertising by the 20th of the month.

Note: Opinions expressed in this newsletter by contributing authors do not necessarily reflect the official policy or position of the MNA. Contact Editor Kelly Ross Terry at krtgraphicdesign@gmail.com, 230-7439 for more information.