



MONTFORD

THE NEWSLETTER OF ASHEVILLE'S MOST HISTORIC NEIGHBORHOOD
Vol. 28 No. 5

MAY '23

Support our Garden Tour Sponsors

2023 HISTORIC MONTFORD GARDEN TOUR

JUNE 3, 2023 10AM TO 4PM



8 LUSH GARDENS WITH LIVE LOCAL MUSICIANS
"SEED POD" SCULPTURE SILENT AUCTION

\$25 PER PERSON

MONTFORDGARDENTOUR.ORG (CREDIT CARD/PAYPAL)

VISITORS CENTER SHOP (CASH/CHECK ONLY)

Harry McDaniel, *Seed Pod*, 2023, aluminum, 56 x 18 x 18 inches.



Garden

Carolina Native
Nursery

Music

Bionic Man Painting
Frugal Framer

Bulb

Rosewood Landscape
Once Cick Fix
Gardenology
Gray Line Trolley
Tours
BCA Architecture

Seed

Reems Creek Nursery
Painters Greenhouse
LaZoom Tours
Sow True Seed
Jesse Israel & Sons
Wright Inn B&B
George Zourzoukis
Taco Billy
Logan Restoration

Our Gardens

Enjoy a casual stroll on winding paths nestled between colorful, sweetly scented blooms. Explore reflections in a secret garden pool, eclectic garden sculpture, and the unique flora of western North Carolina when you visit the eight enchanting gardens on the 2023 Historic Montford Garden Tour.



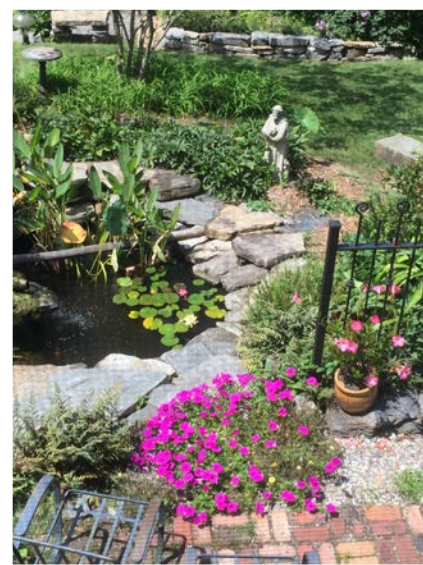
Cheery Peaceful Eden

This sun-kissed garden holds a beautiful surprise around every corner, including terraces and quiet seating areas, a vine-covered arbor, robust banana trees, a koi pond, art installations, and fragrant plantings. The house is a 1901 Arts and Crafts design by Richard Sharp Smith, and the current owners are busy adding annuals and perennials to pump up the color quotient.



Catmandu

Created from an overgrown and trash-strewn vacant lot, the house and garden are just a decade old. Little is left of the original vegetation. Today the structure is provided by levels of boulder and rock, the better to set off some spectacular plant specimens: Dragon's Eye pine, a huge banana tree, hardy opuntia cactus, and a dramatic Autumn Minaret daylily that reaches six feet.



A Work of Art

Over the course of nearly 40 years, the owner has brought order to what was once a jungle of kudzu vines; the house itself dates to 1897. With an artist's eye the owner-gardener has made wildlife welcome with food, water, cover,

and space. Sculptures, garden rooms, and a water feature add to the joy. Special plants include an espalier Keiffer pear and a witch hazel.



Asian Fusion

The owner's Asian-inspired garden has grown up over 25 years of her stewardship, a credit to her upbringing near her family's garden center in western New York.

Lush wisteria vines weave across the front porch, and other features include a 100-year-old white oak and five varieties of bamboo. The owner's basketry and bamboo studio will be open during the tour.

Your ticket will serve as a detail and location map to our gardens on the day of the tour.

Please note: Pets are not allowed in the gardens.

Keep It Simple

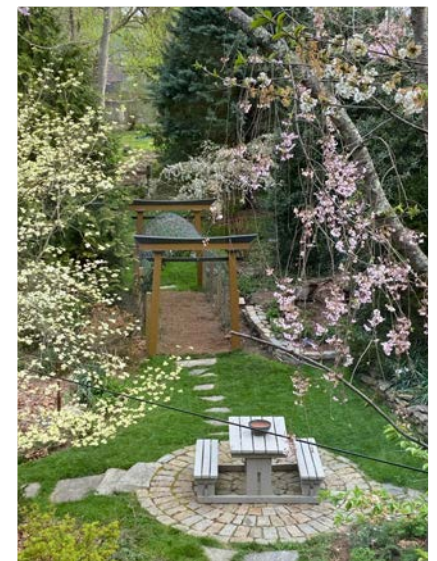
The backdrop for this garden is a 114-year-old house, so the landscape has evolved over many generations and attracts wildlife of all sorts, including owls and bears. Once completely overgrown with ivy, the yard is full of colorful perennials today and easy to maintain with regular weeding. Highlights include giant native hydrangeas and a mulberry tree.



Daylily Delight

The emphasis is on joyful color from spring through autumn, with a special nod to sentimental family heirloom plants brought from a previous residence. A charming stone cottage,

stone pathways, and a large stone patio and greenhouse in back set the stage for the interplay of sun and shadows throughout the day. Daylilies provide color in summer, proof that ivy can be vanquished.



A Bed of Roses

Although the house dates back more than a century and was formerly a Bed & Breakfast inn, it is the first home together for the recently married owners. They keep mowing to a minimum with various groundcovers, including dwarf mondo. Hardscaping includes stone walls, stone and pebble walkways, and decorative planters, the better to show off beloved plant species.

Montford National Forest Wilderness

The humorous name of the garden belies its serious intent as a certified pollinator garden despite the shady aspect. Garden “rooms” are richly appointed with sturdy hardscaping and outdoor furniture, the better to observe the prolific wildlife. An Alaskan cedar and two Franklinia trees are companions to towering American hollies that rise above a lush understory. Prepare to be enlightened!

Our Montford Garden Tour Musicians



Krekel & Whoa **Americana/Country**

Musical conspirators since 2004, Jason Krekel (guitar, fiddle, drums, vocals) and Ami Whoa (keyboard, guitar, vocals) have traveled the continent and beyond sharing their infectious tunes, performing as The Mad Tea Party and by other names. They have played countless venues and festivals and shared the stage with bands such as Southern Culture on the Skids, Donna the Buffalo, and the Avett Brothers.



Elizabeth Terry & John Logue **Classical Guitar and Violin**

Elizabeth Terry is an active performer and music educator and has performed on violin and fiddle for contra dances and with the Hendersonville Symphony, Brevard Philharmonic, Asheville Lyric Opera, Spartanburg Philharmonic, Asheville Choral Society, and Cafe Strings Quartet as well as other orchestras and chamber groups in the WNC area. Elizabeth holds a BA in Music from UNC Asheville and a Master of Music Education from UNC Greensboro.

John Logue hails from Chicago and has been living in the Asheville area for 23 years. He plays and teaches classical guitar and has played in jazz, swing and country ensembles.



Ben Scales and Andy Pond **Bluegrass/Newgrass**

Bluegrass, reggae, folk, you name it, you'll hear it.

Fancy & the Gentlemen **Americana/Country**

Fancy and the Gentlemen brings an eclectic mix of honky tonk, blues, southern gothic, rock, and classical roots to this americana band. Sensitive and rich harmonies weave through the tapestry of original compositions and carefully curated covers that celebrate the roots of American southern music.



Merissa Gail **Classical**

Strings in the Garden - Violinist and Montford resident Merissa Gail Walkenstein, brings together her musical friends to provide chamber music to accompany your garden tour experience.

Bryce Robertson **Smooth jazz**

Bryce has an eclectic sound that is unique to each performance, with original compositions that are worldly, progressive, and infused with experimental improvisations.



Local musicians will be playing at varying times throughout the day on the porches, decks, and patios of our gardens on the tour. The schedule will be posted immediately prior to the Garden Tour and will be included in the Tour Guide you'll receive as your ticket into the event.



Peggy Ratusz **Blues**

Blues/Jazz/Swing & Soul chanteuse, Peggy Ratusz has a crystal clear, swanky, funky and fun range of nostalgic to modern vocal stylings that effectively transmits the groove and the lyrical content. She's been honing her craft for over thirty five years. And for the past ten, she's either won or placed in the Western North Carolina Readers poll for Best in Blues. This year, she was named Best Vocalist and was also voted as the regional artist who gives back to the community the most.



Paper Crowns Duo **Folk-inspired power duo**

The Paper Crowns are ambitious. They are a husband and wife who make music together. At first glance you may think you could pigeon hole them into expectations. They might surprise you. They improvise heavily on acoustic and electric guitar, banjo, and drums... often while singing harmonies. Their sound lives somewhere between Shovels and Rope and an acoustic Jerry Garcia jam. Their songs are some of the best in the nation. Take the time and check them out for yourself." (Juan Bengoa – Concert Promoter/Booking Agent)



Montford **Jazz Band** **Jazz**

The Montford Jazz Band is Henry Candler (trumpet), Sara Nell Chase (bass), Ben Gregory (piano), and Walker Whitley (drums).



Lyric **R&B/Soul**

"Busking (street performing) in Asheville is where I got my start," Lyric says. "Without that, I don't think I would be where I am today." The journey from Asheville's sidewalks to the mainstage has been especially gratifying for Lyric. That's because Asheville is where she was born and raised, and where her family has made a name in music for three generations. "I would hope that my audience leaves feeling enlightened, feeling happy, feeling empowered and feeling like they can accomplish their dreams," Jones said. "I went from playing on the streets to where I am now and that's making a pretty good living playing music."

Aaron **"Woody" Wood** **Appalachian Cosmic** **Soul**

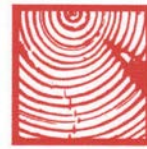
Aaron "Woody" Wood is quite the renaissance man, embodying the energy and mystique of American music. He's shared the stage with Warren Haynes, Trombone Shorty, The Neville Brothers, Mountain, Brad Paisley, Tony Joe White and Sara Evans as well as having players like Mickey Raphael (Willie Nelson's Family Band) on harmonica and worked with famed Producer Rob Frabone (The Rolling Stones, Keith Richards, Bob Dylan).



NEWSLETTER AD RATES

Contact Ross Terry at ross@krtdesign.com or call 230-7439 to place an ad.

SIZE	RATE/ISSUE
Resource Directory	\$15
Business Card	\$35
1/4 Page	\$60
1/2 Page	\$100
Full Page	\$200



LOGAN
RESTORATION  CONTRACTING

Michael Logan
828.707.8877
michael@ashevillerestoration.com

a licensed, insured, and lead-safe company
Historic Window and Door Restoration specialist



Paul Dixon
828.215.7772

PDIXON77@YAHOO.COM

COMMERCIAL ■ RESIDENTIAL ■ INTERIORS
EXTERIORS ■ LICENSED

Looking to buy or sell this
Spring in Montford?

Let's connect and talk about your real estate goals!



CATE SCALES | REALTOR
828.280.1576
339 Merrimon Ave|AVL|NC|28801
cate.scales@nestrealty.com
nestrealty.com/catescales





We're Different



828-277-5164

FINISH CARPENTRY
CABINETS
DESIGN

□
Asheville

**Join the
Montford
listserv.**

The Montford listserv is a neighborhood discussion list. This is a place where you can exchange news about the neighborhood. Visit Montford.org to learn more.

**44th Annual
Griffin
Awards**

Each year, **The Preservation Society of Asheville &**



Buncombe County presents awards to outstanding projects and individuals that further the goals of historic preservation in Asheville and Buncombe County.

Join us for dinner and drinks as we celebrate preservation in our community!

This year historian Sharon Fahrer and graphic designer Ross Terry of Montford will be honored along with the Kenilworth Residents Association and others. Their effort has brought to light the history of the forgotten neighborhood, South Asheville and the work of George Gibbson Sr. to preserve the South Asheville Cemetery a historic Black cemetery. Their panel is installed in Kenilworth Park on Wyoming Street.

When: Thursday May 25th 5:30-8:30

Where: The Hideaway (49 Broadway St, downtown Asheville)

Tickets: \$40 each via link below or by calling 254-2343. You may also mail a check to PSABC PO Box 2806 Asheville, NC 28802

[Buy Tickets >](#)



**NiNE
MiLE**

ninemileasheville.com

History and Highballs

On Thursday May 18, Sharon Fahrer will be giving a free ZOOM talk:

History and Highballs: Missing History: Jewish Life in Western North Carolina (VIRTUAL) | North Carolina Museum of History

<https://www.ncmuseumofhistory.org/news/events/history-and-highballs-missing-history-jewish-life-western-north-carolina-virtual>

Montford Neighborhood Association

Community Meeting April 26, 2023

Michael McDonough called the meeting to order at 6:32 pm. Thanks to Archetype Brewing for opening their establishment for us.

- Lt. Brien Griffin from APD discussed the results of the last quarter: 324 calls to service, 93 crime prevention, 4 overdoses, 2 business B&E several instances of graffiti and 12 vehicles vandalized - LOCK YOUR CAR always. With a homeless camp notification, have patience as the process is not fast. He touched on the downtown initiative with a May 1 start date for a 60 day trial period in association with the Sheriffs Department. Someone asked the question how to praise/commend officers so the upper management is aware. Contact the Police Chief and the PR liaison with details. Recruitment is ongoing but is difficult. Someone reported a drug house on Cherry Street but the home address needs to be determined and reported.
 - Meredith Friedheim, our neighborhood liaison with the COA, discussed her focus as community engagement. She also manages the COA \$5K matching grant program which Montford has been awarded one and putting in for another this cycle. COA is planning to do much work on Hill Street so be aware as you travel near there.
 - Michael brought up the board elections and a motion to approve the slate was brought by Ben Scales and seconded by George Zourzoukis . The vote was unanimous to approve the slate as presented.
 - Susan discussed our financials with a balance of just over \$55K. The upcoming Garden Tour funds raised will go towards refurbishment of the Montford Garden.
 - Karen MacNeil talked kudzu. Raven Invasives guided an event recently to work the kudzu at Cauble and the Reed Creek Greenway. The next event is Saturday, April 29 from 1-4pm. Bring gloves, shovels, etc. to assist.
- We are already have of the way towards generating volunteer hours to offset the COA grant we received.
- Susan Eggerton discussed the Sustainability Symposium. It was rated as a great success with good turnout. Shoutout to Susan Loftis for driving this effort! Susan does hope we can, as a neighborhood and community, take projects forward after the planning stages are completed. As discussed, our next effort to receive COA funds is a tree planting initiative at Klondyke. We have started collaborating with residents and admin folks and the interest in participating is there. We will focus on having a liaison contact to offer info/details, etc.
 - Ami Worthen discussed the HSNA, Historic Stumptown Neighborhood Association, and its history to lose homes and land to eminent domain to build what is now called the Tempie Avery Center. She discussed some of the efforts of the Association and encouraged many of us to come to meetings and participate. Ami, perhaps you can provide some upcoming meeting information for citizens to become more educated about HSNA. Ami indicated that reparations discussions were involved with two representatives at the table.
 - Lynn Raker talked Garden Tour which is scheduled for June 3 from 10am-4pm. They have identified 8 garden sites and 11 or so bands (?) will play for added enjoyment. We do need more docents to assist so if interested contact Randy Hall or do the (MAILCHIMP??). Also, as you shop locally thank the small businesses that advertise to allow events like this to generate money for neighborhood projects.
 - Cherie discussed our local Botanical Garden. She is new to their board and is excited to share info as she can. The Garden does have a new master gardener on hand. They do have some raffle ticket fundraisers coming so contact Cherie Morris for more information. She did state the bridge is being built off site and Fall delivery is anticipated. Yay!

- Dan touched on the HRA issue. Much discussion ensued. The main driver of much community engagement is the proposal by Plugged In Productions to bring large, amplified events to the HRA. At this writing, it appears the COA has not approved rezoning the HRA which is what needs to happen to allow PIP to participate. Many entities are engaged on the future of what HRA will be in the future. Contact me, danala...@gmail.com, if you want to participate on a group to drive discussions about the future of the HRA.
- Leslie Humphrey and Dan Sanford have met about a printed newsletter. Their next step would be to work with the postcard committee (who is this) to send out requests to gauge interest in a printed newsletter. More work to be done on this one.

Next meeting is Wednesday, July 26, 6:30 at Archetype on Broadway.

Respectfully submitted,

Dan Rogers



We appreciate Archetype Brewery offering a vibrant setting for the Montford Neighborhood Association meetings.

Resource Directory

Historic Walking Tours

Stroll the neighborhood or downtown. Walking tours of historic Montford, Riverside Cemetery, Biltmore Village and downtown Asheville.

- 777-1014.

Raven Invasive Plant Management

Saving trees and native plants from non-native invasives. Raven IPM is a local, organic, woman veteran-owned business specializing in mechanical removal of invasive plants. No chemicals, just hard work. • (828)866-3200 • RavenNC.com

Smart Feller Tree Works

Down trees got you down? Contact us for all your tree removal and pruning needs! We are locally licensed and insured. Please call for free estimates. Montford references available. Thanks.

- 828.545.5503

Square Peg Construction Inc.

Add beautiful custom woodwork to your historic home: New upgrades like wood paneling, built-in cabinetry, trim, doors, stairs and railings. Small details add big impact! Montford references.

- Call your neighbors, Leslie and David Humphrey 277-5164

Join the Montford listserv.

The Montford listserv is a neighborhood discussion list. This is a place where you can exchange news about the neighborhood. Visit

Montford.org to learn more.

Green Corner

Erin Hiatt

Happy May! Starting this month, we will spotlight short Q&As with local experts on different opportunities to live greener (and often save money!).



First up, Jamie Wine and Danny Harvey at the Green Built Alliance, “a nonprofit dedicated to advancing sustainable living, green building and climate justice through community education, inspired action, and collaborative partnerships in Western North Carolina and beyond since 2001.” Their website is filled with lots of great information and directories. I’ve asked them for some tips on greening Montford’s unique mix of old homes as well as owned and rented.

What are no-brainer energy-and money-saving opportunities in older homes?

Swap out all bulbs with LEDs. Seal the air gaps around your plumbing fixtures under your sink. They’re out-of-sight, out-of-mind, but often you get lots of expensive inside air escaping through these gaps around the pipes in the drywall. Four bucks of caulk and a weekend afternoon could help you save a lot of money.

What are the biggest misconceptions about “greening” older homes?

Focusing too much on solar and windows. There are ways to add solar and modify windows to older homes, but there’s a lot of options to weatherize an older home without those huge investments. Air sealing can be done yourself or by hiring a professional. Adding insulation and sealing and attic floor are the best place to start if you’re doing major energy improvements in your house. When an appliance dies, make sure you replace it with an Energy Star certified appliance. It adds up, and you can do a lot with a little in older homes.

What are renter-friendly ways to green a house or apartment?

Solar is fun to talk about, but the most cost effective way to reduce your energy bills is to change the way you operate

your home. Adjusting your thermostat closer to the outside temperature, turning off lights and opening-and-closing windows to adjust the temperature in your home are all tried-and-true ways to go green. After you’re doing those options, move up the ladder a little and swap out lights to LEDs and use a low-flow showerhead. You’re a renter? That’s cool, just save what you remove and swap them back out when you move to a new place.

What’s all the talk about electrifying homes?

Unless we remove carbon emissions from buildings themselves, we’ll never reach 100% renewable energy. Moving away from fossil fuels like oil and propane will be critical at your home. Start exploring alternatives that offer similar services for similar prices. Induction cooktops, heat pump water heaters and cold-weather heat pump HVAC systems are excellent alternatives to fossil fuel appliances.

Let me know what other questions you have about greening your home that you’d like answered at montfordgreencorner@gmail.com.

FRUGALFRAMER

YOUR ART. / OUR PASSION.

Downtown AVL/Montford | 95 Cherry St. North
South Asheville | 200 Julian Shoals Dr. #20

frugalframer.com

HISTORIC MONTFORD



2023 Montford Garden Tour Sponsors

★ Garden Sponsor ★



Saving the earth,
one plant at a time.

★ Musicians Sponsors ★



★ Bulb Sponsors ★



★ Seed Sponsors ★



George Zourzoukis
Broker / REALTOR®

Preferred Properties

- 828-215-8233
- george@preferredprop.com
- www.preferredprop.com
- 39 Woodfin Street
- Asheville, NC 28801

Equal Housing Opportunity



While the media focuses on national trends, real estate is local by nature.

For a customized, data-driven report specific to YOUR home and neighborhood, delivered over a cocktail at Little Jumbo, call or drop a text to 828-215-5543.

"Optimism means better than reality; pessimism means worse than reality. I'm a realist."

Margaret Atwood

CONTACT ME TODAY FOR A PRIVATE CONSULTATION.

MILLIE

MILLIE FARMER

Global Real Estate Advisor

828.215.5543

Millie@PremierSIR.com

MillieFarmer.PremierSothebysRealty.com



SMART FELLER TREEWORKS

828.545.5503 smartfellertreeworks.com

Logos: Sustainable Business Living Wage Certified, ISA Member, and others.

Open 11-5 everyday



Downtown Books & News
67 North Lexington Avenue
www.dbnbooks.com




TRUSTED & PROFESSIONAL COMPUTER REPAIR SERVICES FOR BUSINESSES

ONE CLICK FIX
438 Montford Ave,
Asheville, NC 28801
info@oneclickfix.com
www.oneclickfix.com

BEST OF WNC X18
BEST OF WNC 2017 WINNER
BEST OF WNC X 2016

One Click Fix provides exceptional tech support for all your business needs. Call today to get a quote on our remote services that will keep your network and devices up and running 24/7/365.



THE FASTEST AND MOST RELIABLE SERVICE IN ASHEVILLE

ONE CLICK FIX 828-318-8558

Montford Convenience Store

Your local neighborhood store

Hours:
Monday thru Saturday - 8am to 11pm
Sunday - 9am to 10pm

231 Montford Avenue • phone 828-258-1879

Forever Montford

WELCOME PACKET

Randy Hall

Forever Montford, a committee of the Montford Neighborhood Association (MNA) has created a Welcome Packet for new Montford residents. The packet contains information such as a brief history of Montford, a list of MNA board members along with contact information, Montford listserv, Montford newsletter, neighborhood parks, events (due to ongoing COVID-19 concerns, be sure to confirm event dates/times), restaurants, maps, volunteer opportunities and much more. Packets are being delivered by MNA board and Forever Montford committee members upon learning of new residents. Recipients of the Welcome Packet have shown great appreciation with one neighboring writing, "Looks like we lucked out in the neighbor and neighborhood department! I appreciate the history and local information. Well done, and thank you for your thoughtfulness."



If you are new to Montford or know of a new resident, please contact one of the below, and we will coordinate delivery of a Welcome Packet.

Randy Hall: cpabanker@yahoo.com

Leslie Humphrey: leslie@squarepeginc.net

Ashima Nair: ashimanair@gmail.com

Lynn Raker: lynn.raker@gmail.com



828.712.2400

GrizzlybearArborcare.com

**GRIZZLYBEAR
ARBORCARE**

tough love for trees

The Montford Newsletter is published online by the Montford Neighborhood Association, P.O. Box 7181, Asheville, NC 28802, for the residents of Asheville's first historic neighborhood. We welcome articles and advertising by the 20th of the month.

Note: Opinions expressed in this newsletter by contributing authors do not necessarily reflect the official policy or position of the MNA.

Contact Editor Ross Terry at ross@krtdesign.com, 230-7439 for more information.