



# MONTFORD

THE NEWSLETTER OF ASHEVILLE'S MOST HISTORIC NEIGHBORHOOD  
 Vol. 27 No. 9  
 SEPTEMBER '22



**Tempe Avery  
 Center .....**  
**2**

## **Tall John's Neighborhood Tavern Opening in Historic Montford This Fall** *Welcoming Tavern Concept Blends History & Modern Sensibility*

After a decade of searching for the right location to open a restaurant, local chef Trevor Payne has landed in the historic former grocery/church at 152 Montford Avenue. His neighborhood tavern, Tall John's, will open October 2022. The spacious, airy building, which dates back to 1906, is centrally located in Montford, nestled among the neighborhood's historic residences and old-growth tree canopy. Throughout its history, this stately building has been home to a Piggly Wiggly and a Pentecostal church before being restored and converted into a restaurant space. This history adds the perfect backstory for Tall John's, which Payne is developing as a welcoming and gathering space.

continued on page 14...

Trevor Payne (left) and Jasper Adams (right)

<b>E</b>	Tempe Avery Center .....	2	<b>M</b>	Montford Park Players.....	9
<b>D</b>	Crime Watch Update .....	3	<b>P</b>	Plant That Tree .....	11
<b>I</b>	Matching Grant.....	4	<b>W</b>	Welcome Packet.....	13
<b>S</b>	A Montford Paint & Sip .....	6	<b>W</b>	What bears are doing.....	13
<b>Z</b>	HRC .....	6	<b>P</b>	Pack Memorial Library .....	15
<b>I</b>	Resource Directory .....	7	<b>G</b>	Green Corner.....	16

TEMPIE AVERY MONTFORD CENTER

**CALENDAR!**

**Just 2 Climb - Day Session**

Tuesdays, October 11- 25,  
12:00-1:30 PM, \$20

**Just 2 Climb - Evening Session**

Fridays, October 14-28,  
6:00-8:00 PM \$20

**Afterschool**

Monday-Friday  
3:00-6:00 PM

**Community Art Night**

Friday, October 7 and October 21  
6:00-8:00 PM Free



**Montford Open Access Table Top Gaming**

Saturday, October 8 12:00-5:00 PM FREE

**Glow in the Dark 4 on 4 Jam**

Saturday, October 8 Ages:15 and up  
5:00-7:00 PM FREE

**Halloween Creepy Climbing**

Saturday, October 22 6:00-8:30 PM  
Ages: 5 and older Free

**For more Information Contact:**

Seth Jackson  
Recreation Facility Manager  
Tempie Avery Montford Center  
Asheville Parks and Recreation  
828-253-3714 - Office  
828-337-2403 - Business Cell  
[sjackson@ashevillenc.gov](mailto:sjackson@ashevillenc.gov)



**828.712.2400**

**GrizzlybearArborcare.com**

**GRIZZLYBEAR  
ARBORCARE**

*tough love for trees*

## Montford Crime Watch Update

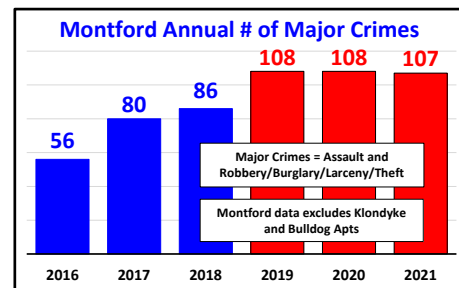
Reports of Asheville crime frequently appear in the media. There is also a heightened sensitivity in Montford after the recent assault on Pearson and the armed robbery on Cumberland. This was a significant topic of discussion at the July Montford Neighborhood Association meeting. It is easy to become alarmed, but what do the facts say?

The Asheville Police Department publishes crime data on their website. The following analysis looks at what the data says for Montford thru August 31, 2022. First, a couple of points...

- The data for Klondyke (and Hillcrest) and the Bulldog Apartments has been excluded from the analysis. This is not because that data is less important, but because their situations are different and would distort the analysis of the rest of Montford.
- There are many different types of crimes. For this analysis, we will focus on "major" crimes, which are homicide (which fortunately we have not had), assault and various forms of theft. It is not that other crimes (such as drugs, vandalism, etc) are unimportant. But focusing on these "major" crimes puts a spotlight on the crimes that likely worry residents the most.

### The bad...

- Montford has seen nearly a doubling in the number of "major" crimes since 2016.
- Since 2019, Montford has averaged over 100 "major" crimes per year (roughly two per week).



### The good...

- In 2021, a Montford resident was about half as likely to experience a "major" crime as a resident living elsewhere in Asheville (excluding public housing) on a per capita basis.
- Montford "major" crimes thru August has shown a 22% reduction versus the same period last year. If this is not an anomaly and is sustainable, it would be very encouraging!

### The however...

- What really matters is the absolute level of crime. In looking at the results in 2022 thru August, and even with the significant improvement thus far in 2022...
  - We still experience a violent crime about twice a month...defined as assault and armed robbery.
  - We have a "major" crime about twice a week.

Assault	15	} Violent Attacks 17 YTD = ~2/month
Robbery (armed)	2	
Vehicle Theft	7	
Burglary & Larceny	35	
<b>Total Major Crimes</b>	<b>59</b>	<b>= ~2/week</b>
All Other Crimes	54	
<b>Total Crimes</b>	<b>113</b>	

How residents feel about this absolute level of crime will vary from resident to resident. To gain a consensus from the broader Montford community, a short (anonymous) survey is being sent to Montford residents. To participate, open the survey link below or enter it into your browser. It will also be circulated via ListServ and Facebook (Montford Crime Watch). The results will be shared with the Montford Neighborhood Association Board and published in the Montford Newsletter. The purpose of this is not to cause alarm. But to look at the facts, get community input, and then depending on the level of concern, have an informed discussion on ways to potentially reduce crime in the neighborhood. Hopefully you will take a couple of minutes to share your personal views via the survey. → <https://www.surveymonkey.com/r/5SZMPT2>

*Thanks to resident Marc Voorhees for collecting this crime data and setting up the survey.*



## Montford is Awarded a \$5,000 Matching Grant

**Karen MacNeil**

### Montford Neighborhood Association is Awarded a \$5,000 City of Asheville Neighborhood Matching Grant to Remove Invasive Plants and Enhance Biodiversity Along the Reed Creek Greenway

We began this neighborhood initiative last year with our Community Through Kudzu events that served to bring supportive stakeholders together and provide educational, hands-on experience in the harvesting and uses of kudzu. Partners include Kudzu Culture, the City of Asheville Parks and Recreation, Smart Feller Tree Works, and Urban Forest Alliance. The Montford Neighborhood Association contributed \$250 to the first Community Through Kudzu event at Tempie Avery Community Center on November 27, 2021, and \$450 to the second event at the Cauble Street intersection of the Reed Creek Greenway on April 2nd and 3rd, 2022.

Our goal in applying for the City of Asheville Neighborhood Matching Grant is to use that momentum of volunteer involvement (over fifty from the Community Through Kudzu events) to continue building community and caring for our neighborhood greenway. Emphasis will be on freeing the trees from the vines and working to restore biodiversity in our public greenspaces.

The area we plan on addressing is about an acre. We plan for Raven Invasives to manage the densest portion of overgrown trees with her work crew and our volunteers to free the tree line from vines around that.

We are also working in partnership with UNCA by helping to promote their campus/greenway cleanups and encouraging Montford neighbors to join in these

workdays. Instructors at UNCA teach about invasives, bring their students to events sponsored by the Montford Neighborhood Association, and actively support preserving the urban forest along the greenway. This collaboration benefits everyone, is fun, and is necessary for the long-term success of improving biodiversity and climate resilience in our community.

Please stay tuned for announcements about volunteer opportunities that will be shared via the Montford Newsletter, the Montford Listserv, and the Montford Neighbors Facebook page.

Thank you and we look forward to seeing you on our neighborhood greenway!



CAMPUS OPERATIONS INVITES YOU TO  
GREENFEST WORKDAY  
CELEBRATE ARBOR DAY AT UNC ASHEVILLE

Visit [unca.edu/greenfest](https://unca.edu/greenfest) to register

## Operation: Tree Rescue

Join students, faculty, staff and community members  
in wrangling invasive exotic kudzu on university property and  
along Reed Creek Greenway

**Wednesday September 21**  
**10am-5pm (one hour shifts)**

UNIVERSITY of NORTH CAROLINA  
ASHEVILLE



Kudzu destroyed this tree (Along the Great Smoky Mountains Railroad in August 2008, photo credit Ross Terry).

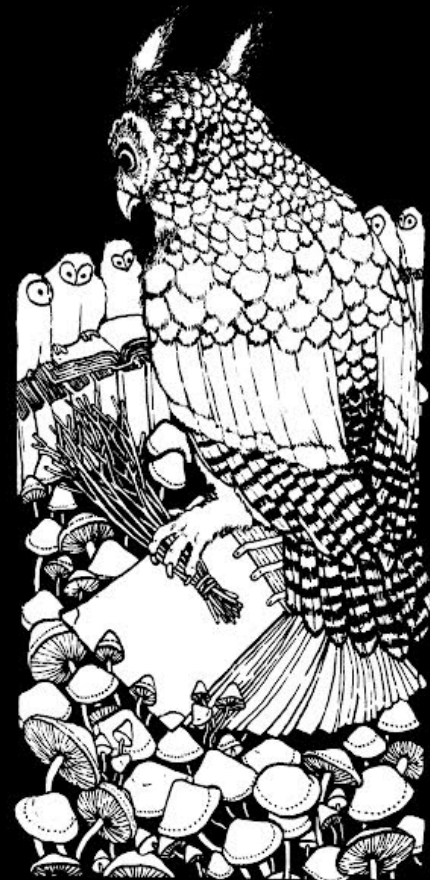
**Help keep Kudzilla out of the Reed Creek Greenway.**

**NEWSLETTER AD RATES**

Contact Ross Terry at [ross@krtdesign.com](mailto:ross@krtdesign.com) or call 230-7439 to place an ad.

SIZE	RATE/ISSUE
Resource Directory	\$15
Business Card	\$35
1/4 Page	\$60
1/2 Page	\$100
Full Page	\$200

Open 11-5 everyday



Downtown Books & News  
 67 North Lexington Avenue  
[www.dbnbooks.com](http://www.dbnbooks.com)



Michael Logan  
 828.707.8877  
[michael@ashevillerestoration.com](mailto:michael@ashevillerestoration.com)

a licensed, insured, and lead-safe company  
 Historic Window and Door Restoration specialist



## A Montford Paint & Sip

Asheville has an affordable housing crisis. Homeownership in Montford is far out of reach for most Asheville families. You are invited to join your neighbors at an upcoming event to learn what you can do to change that, while enjoying a “Paint & Sip” art activity led by artist and former Montford resident Jenny Pickens.

**When:** Saturday September 24th – 1pm - 3pm

**Where:** 67 Cumberland Ave.

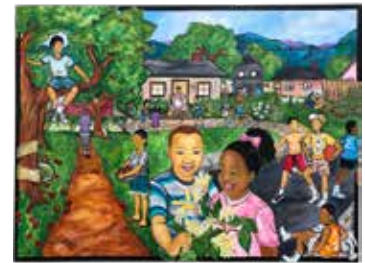
**Cost:** The event is free to the first 30 people who RSVP

To learn more and RSVP, please scan the QR code.

For questions or to RSVP over the phone, call Crystal Sherriff at 838-380-4222

Hosted by the Montford & Stumptown Fund of the Asheville-Buncombe Community Land Trust.

Food to be provided by All Day Darling.



*Growing up in Asheville*  
by Jenny Pickens



## Historic Resources Commission of Asheville and Buncombe County

### Montford Action Agenda 07/13/22

**Present:** Gail Lazaras, Will Hornaday, Sioux Oliva, Sara Groce, Shannon Watkins

**Absent:** Chair Emily Kite, Vice-Chair Emily Spreng, Stephanie West, Shelly Jackson

**Staff present:** Alex Cole, Avery Tew, Jannice Ashley

### Item, Summary and Action

**9 Pearson Drive** (PIN 9649026231) - Replace existing non-original door and windows on basement level of rear elevation with new wood French doors and wood windows; screen existing section of porch on rear elevation.

**Action**—Approved

**15 Zillicoa Street** (PIN 9639952165) - Removal of existing garage doors on accessory structure and

install new door, windows and siding within openings; construct new handicap parking space and ADA compliant concrete walkway to access the structure.

**Action**—Approved with conditions

**141 Cumberland Avenue** (PIN 9649136023) - Subdivision of existing 0.47 acre lot into two new lots.

**Action**—Approved

### HRC Application Portal

The city is now accepting HRC applications digitally via the Development Portal at this address:

<https://develop.ashevillenc.gov/>

Please refer to the website ([www.ashevillenc.gov](http://www.ashevillenc.gov)) for the full approved minutes after the following month’s meeting.

## Resource Directory

### Historic Walking Tours

Stroll the neighborhood or downtown. Walking tours of historic Montford, Riverside Cemetery, Biltmore Village and downtown Asheville, call 777-1014.

### Smart Feller Tree Works

• Ira Friedrichs • 545-5503 (NEW cell) • irafriedrichs@gmail.com.

Down trees got you down? Contact us for all your tree removal and pruning needs! We are locally licensed and insured. Please call for free estimates. Montford references available. Thanks.

### Square Peg Construction Inc.

Add beautiful custom woodwork to your historic home: New upgrades like wood paneling, built-in cabinetry, trim, doors, stairs and railings. Small details add big impact! Montford references.

• Call your neighbors, Leslie and David Humphrey 277-5164

## FRUGALFRAMER



YOUR ART. / OUR PASSION.

Downtown AVL/Montford | 95 Cherry St. North  
South Asheville | 200 Julian Shoals Dr. #20

frugalframer.com

## Forever Montford

### GO AHEAD - PLANT THAT TREE

*And the MNA will give you up to \$300 to do it.*

The Montford Neighborhood Association will contribute up to 50% of your cost for planting a tree on your property - up to \$150 per tree and up to \$300 total per household.

Since September 2019, the MNA has helped fund 65 trees, awarded \$3,800 for tree planting, and leveraged over \$15,000 worth of tree planting projects. Any Montford property owner, renter, or local organization may apply. Applications will be processed on a first-come, first-serve basis. Award of grants is at the discretion and funding availability of the MNA.

Remember, Fall is for planting!

Find additional information and the grant application at [Montford.org](http://Montford.org).

Click "Links" then "Tree Grant"

or go to this link: [http://montford.org/wp-content/uploads/2019/12/TreeGrant\\_2019\\_1209.pdf](http://montford.org/wp-content/uploads/2019/12/TreeGrant_2019_1209.pdf)





**SQUARE  
PEG**  
We're Different

**828-277-5164**  
FINISH CARPENTRY  
CABINETS  
DESIGN  
Asheville

**Join the  
Montford  
listserv.**

The Montford listserv is a neighborhood discussion list. This is a place where you can exchange news about the neighborhood. Visit [Montford.org](http://Montford.org) to learn more.

**We'll Do the Working.  
You Do the Retiring.**

With 21 years of financial planning expertise behind us, we believe your hard-earned resources should keep working for you long after you retire. With a partner like us on your side, you can find the clarity you need to plan the retirement you deserve.

Get started with a free consultation at [sfginfo@raymondjames.com](mailto:sfginfo@raymondjames.com)

PLANNING WITH HEART. INVESTING WITH PURPOSE.

**STARKS  
FINANCIAL  
GROUP**

[starksfinancial.com](http://starksfinancial.com)  
828.285.8777 | 877.285.RJFS (7537)  
440 Montford Avenue, Asheville, NC 28801

Starks Financial Group is not a registered broker/dealer and is independent of Raymond James Financial Services. Securities offered through Raymond James Financial Services, Inc., Member FINRA/SIPC. Investment advisory services offered through Raymond James Financial Services Advisors, Inc.





## MONTFORD PARK PLAYERS

### **The Musketeers are a HIT!**

A classic for the WHOLE FAMILY!

Directed by Rodney Smith, this action/adventure has had audiences cheering the good guys and booing the baddies.

You don't want to miss it!

*The Three Musketeers* has only one remaining weekend!

September 16 and 17 @ 7:30pm

Hazel Robinson Amphitheatre 92 Gay St. Asheville, NC



### **Up Next - Hamlet**

*Hamlet* is one of the best-known plays and is often spoken of as the greatest ever written in English.

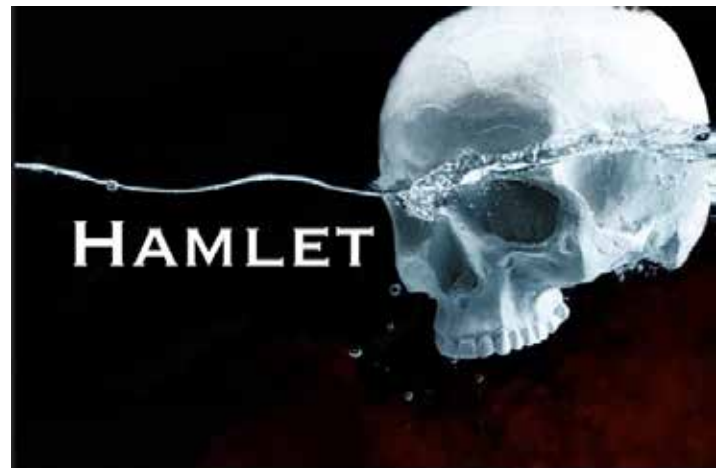
The classic plot follows Hamlet, the Prince of Denmark, as he mourns the untimely death of his father, the king. A ghostly visit clues him in to the fact that his father was murdered by his uncle and current king, Claudius. Thus begins Hamlet's plot to get his revenge. Meanwhile, he feigns madness, tries to assuage the fears of his love, Ophelia, and his mother, Gertrude. All this while himself trying to avoid his own uncle's machinations to get rid of him. Tragedy ensues.

Director Glenna Grant is an actor, singer, creator, and teacher currently based in her hometown of Asheville, NC, after a decade performing professionally in New York.

September 23-October 22

Friday, Saturday and Sunday @ 7:30pm

Hazel Robinson Amphitheatre 92 Gay St. Asheville, NC



# DO YOU KNOW HOW THE HRC GUIDELINES AFFECT YOUR HOME?

## Montford Historic District Design Review Guidelines



Adopted April 14, 2010  
Amended December 14, 2016  
Asheville, NC

HRC meetings are held on the second Wednesday of each month at 4 p.m. in the North Conference Room of Asheville City Building at 70 Court Plaza.

For a digital or bound copy of the Montford Historic District Design Guidelines, email [Millie@PremierSIR.com](mailto:Millie@PremierSIR.com) or call 828.215.5543.



# MILLIE

## MILLIE FARMER

828.215.5543

[Millie@PremierSIR.com](mailto:Millie@PremierSIR.com)

[MillieFarmer.PremierSothebysRealty.com](http://MillieFarmer.PremierSothebysRealty.com)

Premier | **Sotheby's**  
INTERNATIONAL REALTY

[PremierSothebysRealty.com](http://PremierSothebysRealty.com)

Sotheby's International Realty® and the Sotheby's International Realty logo are registered service marks used with permission. Each office is independently owned and operated.

# Montford Convenience Store

*Your local neighborhood store*

**Hours:**

Monday thru Saturday - 8am to 11pm  
Sunday - 9am to 10pm

231 Montford Avenue • phone 828-258-1879



**Paul Dixon**  
828.215.7772

PDIXON77@YAHOO.COM

COMMERCIAL ■ RESIDENTIAL ■ INTERIORS  
EXTERIORS ■ LICENSED



TRUSTED & PROFESSIONAL  
COMPUTER  
REPAIR  
SERVICES  
FOR BUSINESSES

ONE CLICK FIX  
438 Montford Ave,  
Asheville, NC 28801  
info@oneclickfix.com  
www.oneclickfix.com



One Click Fix provides exceptional tech support for all your business needs. Call today to get a quote on our remote services that will keep your network and devices up and running 24/7/365.



THE FASTEST AND MOST RELIABLE SERVICE IN ASHEVILLE

ONE CLICK FIX 828-318-8558

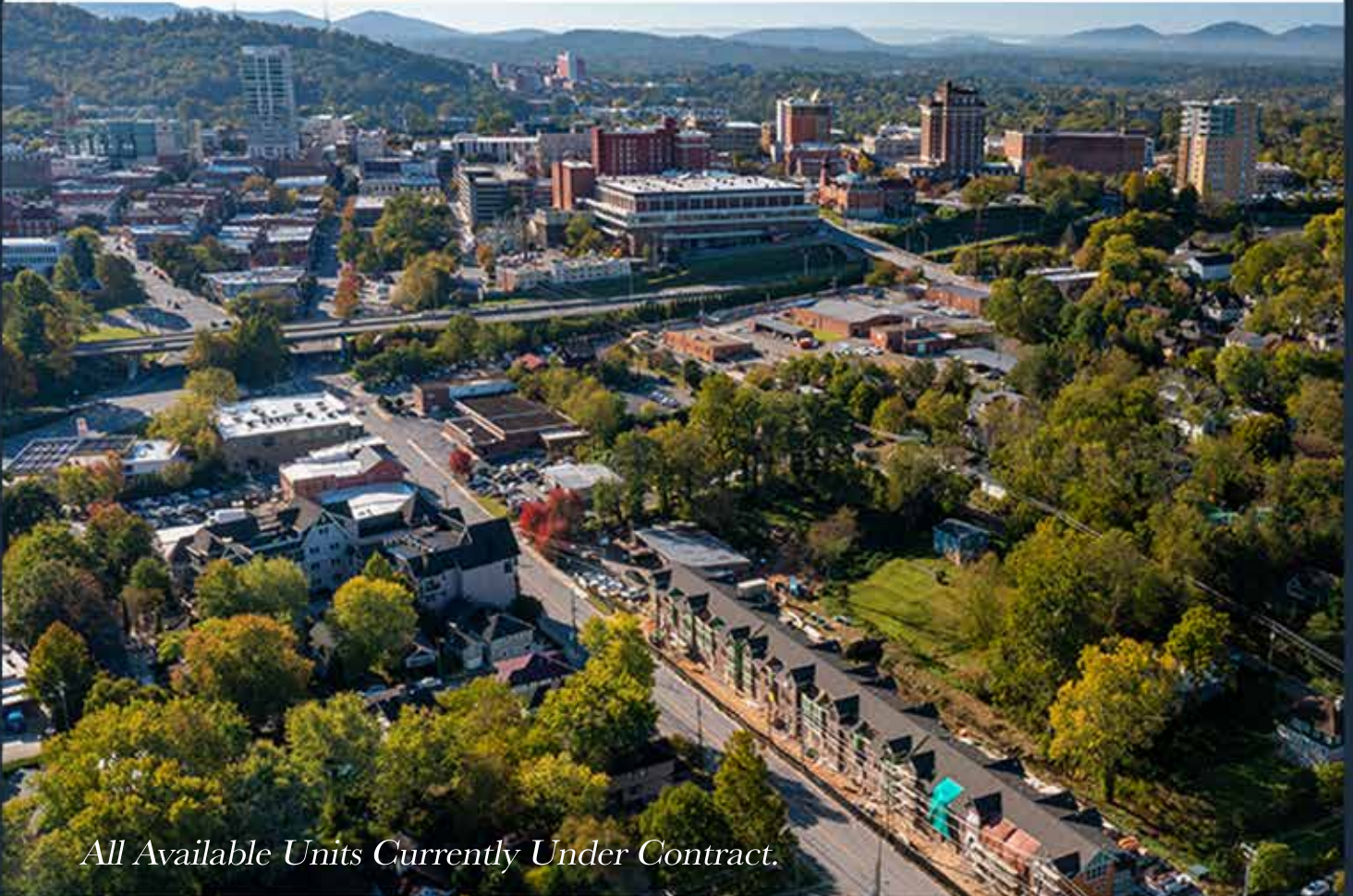
828.545.5503 smartfellertreeworks.com

**PLEASE  
SUPPORT OUR  
ADVERTISERS**  
**They make the  
newsletter  
POSSIBLE!**



# The BROADWAY

≡ ASHEVILLE'S INSPIRED BROWNSTONE LIVING ≡



*All Available Units Currently Under Contract.*

“We wanted to bring a different experience to downtown Asheville living—spacious homes offering desirable amenities and a lifestyle located in a historic neighborhood where everything is at your doorstep.” - *Jay Lurie & Kevin Kerr, Brokers | Developers*



THE  
REAL  
ESTATE  
CENTER

*Located in Asheville's  
#FivePointsBroadway neighborhood*

Jay Lurie & Kevin Kerr, Brokers | Co-Developers  
Info@TheBroadwayAsheville.com

[TheBroadwayAsheville.com](http://TheBroadwayAsheville.com)

≡ B ≡



## Forever Montford

### WELCOME PACKET

#### Randy Hall

Forever Montford, a committee of the Montford Neighborhood Association (MNA) has created a Welcome Packet for new Montford residents. The packet contains information such as a brief history of Montford, a list of MNA board members along with contact information, Montford listserv, Montford newsletter, neighborhood parks, events (due to ongoing COVID-19 concerns, be sure to confirm event dates/times), restaurants, maps, volunteer opportunities and much more. Packets are being delivered by MNA board and Forever Montford committee members upon learning of new residents. Recipients of the Welcome Packet have shown great appreciation with one neighboring writing, "Looks like we lucked out in the neighbor and neighborhood department! I appreciate the history and local information. Well done, and thank you for your thoughtfulness."

If you are new to Montford or know of a new resident, please



contact one of the below, and we will coordinate delivery of a Welcome Packet.

Randy Hall: [cpabanker@yahoo.com](mailto:cpabanker@yahoo.com)

Leslie Humphrey: [leslie@squarepeginc.net](mailto:leslie@squarepeginc.net)

Ashima Nair: [ashimanair@gmail.com](mailto:ashimanair@gmail.com)

Lynn Raker: [lynn.raker@gmail.com](mailto:lynn.raker@gmail.com)



### What bears are doing now

#### SEPTEMBER AT A GLANCE:

- Bears enter hyperphagia in September and may look for food up to 20 hours a day.
- Berries, nuts and acorns are important fall bear foods.
- Bears can gain two to three pounds a day.
- Even bears that don't hibernate eat as if they're going to.
- Moms-to-be look for a good birthing den and nursery.



[Read more at  
bearwise.org](http://www.bearwise.org)

## Tall John's

Continued from front page...

Payne, a local with deep family roots in the Asheville area, will operate Tall John's as chef/owner on the heels of an extensive culinary career in Portland, Oregon's top kitchens (Clyde Common, Le Pigeon, Little Bird Bistro, Olympia Provisions). He's joined by General Manager Jasper Adams (Table, The Imperial Life, Cucina 24, Rhubarb), who has called Asheville his hometown since birth. Together, Payne and Adams are carefully crafting an approachable experience for their guests, dispensing with the self-serious pretensions that tend to accompany a curated restaurant experience.

Finding inspiration in the bygone era of neighborhood taverns in major cities like New York, Montreal, and London, Payne has been careful to ensure that Tall John's is "a place for all occasions, for everyone." He sees the restaurant as a destination for everyday meals and special occasions alike, where "the quality of the food, beverage, and service is just as important as creating an approachable atmosphere where people feel comfortable. I want people to engage with the restaurant without feeling embarrassed or intimidated about their personal preferences."

Tall John's food menu will offer European-American classics like roasted chicken, cold oysters, radishes and cultured butter, caesar salad, and a great steak. The newly-built spacious bar will serve classics like freezer-cold martinis, an intentional selection of enduring wines from small producers, time-honored draft and packaged beers, and crafted non-alcoholic drinks. Guests will have a variety of seating options to choose from, including outdoor patio seating, a full-service bar, a counter at the open kitchen, and a lively dining room.

At opening, Tall John's will offer dinner service Wednesday through Sunday, with additional offerings, including weekend brunch, daytime coffee, and what the team describes as a "badly needed in Montford" retail bottle shop on the ground floor, soon to follow. For Adams, Tall John's is a homecoming of sorts. "I've been in Montford since I could walk. I'm so excited to return to

the neighborhood and put a decade of experience to work making Tall John's a true neighborhood amenity. I want people to feel warmly welcomed, at all times, anywhere in the space." This attitude made Adams the perfect fit for Tall John's. "Jasper was able to tune into the concept immediately," Payne says. "This relationship has been a highlight of the entire process for me, and Tall John's is better because of it."

For Payne, Montford is the perfect home for Tall John's welcoming atmosphere. As a resident of the neighborhood, where he lives with his wife and kids, Payne is thrilled to open a restaurant in his own community. This location in particular has been on his mind for more than a decade. "I've thought about what that space needed if I ever got a hold of it. The goal was to build around what the location needed rather than force a particular concept."

Tall John's historic setting is currently undergoing an extensive interior redesign that modernizes the space while also maintaining the building's original historic character: the original 1900s-era floors are being refurbished rather than covered over, while a newly open kitchen and spacious bar contribute to a welcoming atmosphere. Payne, the son of storied Asheville artist John Payne (of the Wedge Studios), has called upon some of his closest relationships with artists and craftspeople to bring original touches to the space. These details include custom metal work from Tina and Kayla Councill of Iron Maiden Studios and original artwork from local artist Kevin Hogan (Payne's father-in-law).

Other prep is underway in anticipation of an October launch, including staffing both kitchen and front-of-house positions. In the midst of citywide staffing challenges in hospitality, Payne and Adams are offering their team competitive pay, generous benefits and an equitable work environment, extending their warm and welcoming ethos to staff and guests alike.

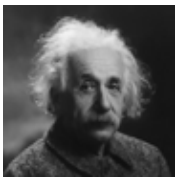
Tall John's, 152 Montford Ave., Asheville, NC, 28801, 828-782-5514, [www.talljohns.com](http://www.talljohns.com)

Please send inquiries and interview requests to [support@clickwithus.com](mailto:support@clickwithus.com)





## Pack Memorial Library 67 Haywood Street in downtown Asheville



*“The only thing that you absolutely have to know, is the location of the library.”*  
—Albert Einstein

Are you new to the neighborhood or has it been a long time since you last visited Pack Memorial Library in downtown Asheville? There are endless resources to explore or to discover:

- **Over 150,000 items available for browsing and lending.** These resources include books, periodicals, CDs, DVDs, and research materials. The library also participates in statewide resource sharing and offers inter-library loans.
- **Free internet access, public computing, and Wi-Fi.** Photocopy and printing services are available for a small fee.
- **Free laptop and hotspot lending program.** Laptops and hotspots are now available for a free 30 day loan with a library card.
- **Free tickets to local attractions.** Use your library card to sign up for Zoom passes, which are free tickets to local attractions like the WNC Nature Center, the NC Arboretum, or the Asheville Museum of Science.
- **Free digital audiobooks, e-books, magazines, and movies.** The Libby app from Overdrive provides downloads of these items to your smart phone, tablet, or computer. It's like an Audible subscription service, but free with your library card.

- **A vibrant and inviting children's library.** The library has books for all ages and reading levels, and board games, and sporting equipment available to lend.
- **Thousands of unique local historical records, photographs, maps, and memorabilia.** The Buncombe County Special Collections Library provides researchers the resources and expertise they need to understand and interpret the history of Western North Carolina.
- **Bookends Used Bookstore offers bargain prices for a wide variety of books and media, including vintage and collectible materials and bestselling fiction.** Proceeds from the sales benefit the library programming.

For more information, visit the library or their website:  
<https://www.buncombecounty.org/governing/depts/library/branch-locations/pack-memorial.aspx>

Parking in the Civic Center parking ramp is free for the first hour. The library is also walkable from the Montford neighborhood.



**Get your Montford Banner**

Three colors to choose from: red, green, and mustard yellow. They are available at the Asheville Visitor Center, 36 Montford Ave. (828) 258-6101

## Green Corner Mitch Russell



With sadness, I write my last column for the Green Corner in hopes that it has been useful, informative and/or entertaining. Thank you to Ross and Joe before him as editors and Erin Hiatt for stepping up to fill my shoes.

As I write this final article news has broken that losses to the Greenland Ice Sheet will increase sea level rise by a foot at some point in the future regardless of what action we take as individuals, a city, county, state, country or world. I'm not writing this to dissuade you from continuing or beginning to take action, but rather to encourage you to continue with what you're doing, begin doing or add to what you're already doing.

I believe that we as individuals can and will make a difference. We can amplify that action by encouraging friends and family to act, voting, contacting elected officials, writing letters to the editor, joining conservation/environmental groups and other advocacy.

A few varied upcoming, (ok, November isn't that close, but it's within the next 2.5ish months) actions you can take:

Pledge to take reusable bags everywhere and not just to the grocery store. Start today!

Pick up trash while on a walk or going to get your trash/recycling cans. It will keep it out of the storm drain that probably flows to a creek before dumping into the French Broad and beautifies your street or another street!

Attend the kudzu/ivy removal event on the Reed Creek Greenway on September 21, Operation Tree Rescue w/UNCA. Trees provide so many benefits & most of the vines ain't from around here!

A month-ish later get some trees from Greenworks. You can breathe easier once you get them in the ground!

A little over a week later is Election Day. There's a greenway/land conservation bond referendum on the ballot. Be sure to vote!

Finally, thank you to everyone who has been working to better our planet and keep it up!

## Join the Montford listserv.

The Montford listserv is a neighborhood discussion list. This is the place where you can exchange news about the neighborhood. Visit [Montford.org](http://Montford.org) to learn more.

*The Montford Newsletter* is published online by the Montford Neighborhood Association, P.O. Box 7181, Asheville, NC 28802, for the residents of Asheville's first historic neighborhood. We welcome articles and advertising by the 20th of the month.

Note: Opinions expressed in this newsletter by contributing authors do not necessarily reflect the official policy or position of the MNA.

Contact Editor Ross Terry at [ross@krtdesign.com](mailto:ross@krtdesign.com), 230-7439 for more information.