



MONTFORD

THE NEWSLETTER OF ASHEVILLE'S MOST HISTORIC NEIGHBORHOOD

VOL. 27 NO. 4

APRIL '22

GO AHEAD - PLANT THAT TREE
And the MNA will give you up to \$300 to do it.

The Montford Neighborhood Association will pay up to 50% of your cost for planting a tree on your property - up to \$150 per tree and up to \$300 total per household.

Since September 2019, the MNA has helped fund 63 trees, and leveraged over \$15,000 worth of the Association's funds for tree planting.

Any Montford property owner, renter, or local organization can apply for a grant. Applications will be processed on a first-come, first-serve basis. Grant amounts are at the discretion of the MNA.

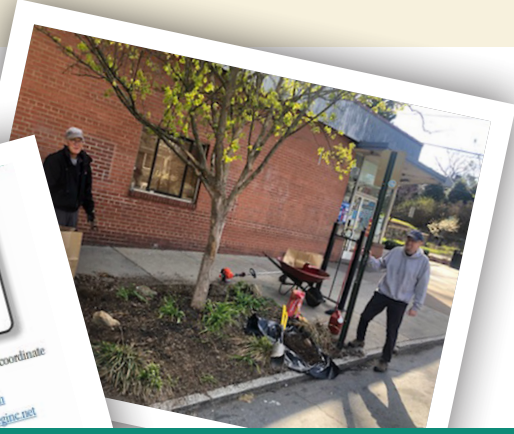
Although "fall is for planting", spring is also a great time to plant. Find additional information and the application form on the MNA website. Click "Links" then "Tree Grant" or go to this link: <http://montfordmna.org>

WELCOME PACKET

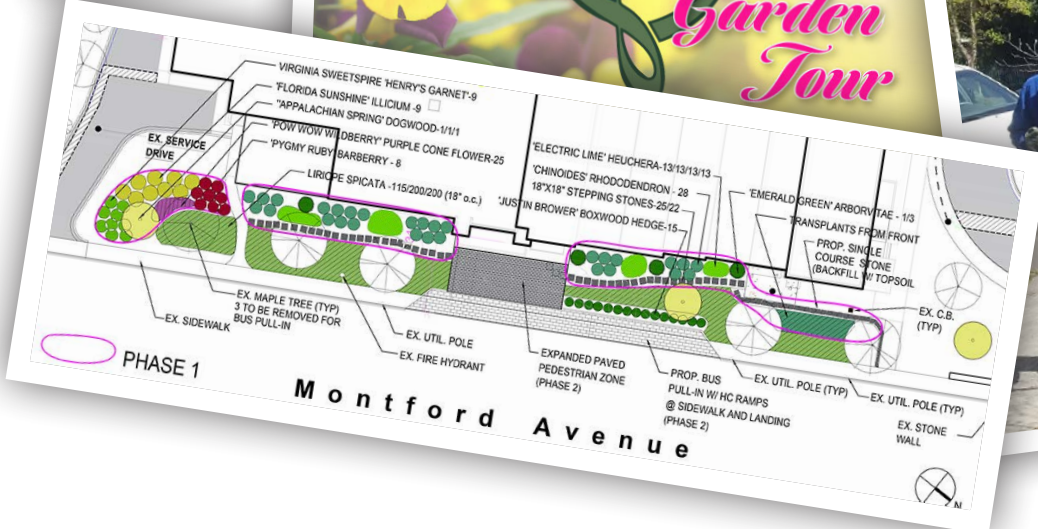
Randy Hall

Forever Montford, a committee of the Montford Neighborhood Association (MNA) has created a Welcome Packet for new Montford residents. The packet contains information such as a brief history of Montford, a list of MNA board members, neighborhood parks, events (due to ongoing COVID-19), and contact information for restaurants, businesses, and other services in the neighborhood. Packets are available at the MNA office or by email. Contact one of the below, and we will coordinate delivery of a Welcome Packet.

randyhall@montfordmna.org
crashamber@yahoo.com
www.montfordmna.org



*Forever Montford
Details on page 3*



TEMPIE AVERY MONTFORD CENTER

Mark Your Calendar

Montford Youth and Pre-Teen Afterschool Programs—Monday-Friday from 3-6pm

Gymnasium will be closed to refinish the floor and stage May 30-June 10

Montford Glow Night - Laser Tag April 30 from 6-9pm



Community Access Art Night April 15 from 6-8pm - Surrealism



Learn to Navigate Day Hike April 24 from 9am-5pm - Dupont State Recreational Forest



Yoga Basics

May 7, 14, and 21 from 10-11am Weaver Park

Montford Open Gym Basketball

Wednesdays and Fridays from 12-2pm

Montford Open Climbing

April 27 from 6:30-9:30pm May 10 from 12-3pm

Climbing Together (Women's Climbing Program)

May 6, 13, and 20 from 6-8pm

(check out the city website for more information or if you are interested in submitting a short film)

You can use the QR attached if you would like to support HELPMATE.

For more Information Contact:

Seth Jackson Recreation Facility Manager Tempie Avery Montford Center Asheville Parks and Recreation 828-253-3714 - Office 828-337-2403 - Business Cell sjackson@ashevillenc.gov

What is Forever Montford, and what do they do?

Forever Montford is a committee of the Montford Neighborhood Association (“MNA”) with a goal to secure Montford’s future in three ways:

- **Improve Montford as a Neighborhood:** Build cooperative initiatives (among individuals, businesses, civic organizations and philanthropies) to stimulate improvement in safety, property upkeep, use of buildings, condition of parks and public amenities (sidewalks, streets) and care of trees and other shared assets.
- **Keep Montford Safe:** Stimulate residents to keep their own property clean and attractive and to volunteer effort to keep communal property (traffic islands, pocket planters, parking strips, and parks) free of weeds, overgrowth and litter as a maintenance program promotes safety.

- **Help to Get Things Done:** Provide assistance to the MNA board by maintaining a prioritized list of Montford improvement projects, organizing efforts to accomplish those projects and raising money to fund those projects through various resources.

Forever Montford’s purpose complements the work of other organizations supporting Montford; for example HRC, which oversees historic preservation across the Buncombe County and the MNA, which manages Montford communications, community-sponsored events, raises money for neighborhood projects and community support services such as the Tempie Avery Recreation Center.

As a committee, we hold ourselves accountable for being efficient stewards of resources, and for achieving results. We have developed the following scorecard as a resource for you, our neighbors, to show our progress.

ScoreCard

Garden Tour	Community Economics	Education	Neighborhood Impact	Partnerships
<p>After a 17-year hiatus; committee relaunched the Montford Garden Tour</p> <p>Sold 1,040 tickets</p> <p>12 beautiful gardens were featured on tour</p> <p>Received \$3K from MNA for start-up expenses</p> <p>Generated a net profit of \$16K</p> <p>Next garden tour scheduled for June 2023</p>	<p>12 local musicians performed during garden tour; total cost of \$3K</p> <p>90% of expenses for garden tour supported local businesses</p> <p>Most of the tree grant purchases support local growers and contractors</p> <p>Local plan nurseries, tree services, realtors and other professionals served as sponsors for the garden tour</p> <p>Engaged local historian to write narrative for new bus shelter history panel</p> <p>Neighborhood restaurants benefit from increased foot traffic</p>	<p>Many of the garden tour docents were either master gardeners or individuals knowledgeable about gardens and plants</p> <p>Extensive honeybee displays and education at home of Phyllis and Richard Styles</p> <p>Installed new landscaping at front of Montford NorthStar Academy; students and parents participated</p> <p>Tree grant application provides information on appropriate trees for neighborhood</p> <p>History panel being created for new bus shelter</p> <p>Numerous articles in MNA newsletters discussing decline in Montford tree canopy and environmental issues</p>	<p>New shelter at north end of Montford Avenue providing services for those primarily living in Klondyke and Verge Apartments</p> <p>Tree grant has resulted in the installation of 63 new trees in Montford</p> <p>Neighborhood spruce up days ensure sidewalks are clear for pedestrians during neighborhood events</p> <p>City of Asheville provides additional street sweeping and debris pickup following neighborhood spruce of days</p> <p>Designed and mailed postcards to remind neighbors about upcoming MNA meetings</p> <p>Created and distributed welcome packets for new Montford neighbors</p> <p>Distributed neighborhood survey to help determine effective way to improve communications</p> <p>Landscape plan being developed for green space located at E. Waneta St & Montford Ave</p>	<p>City of Asheville installed new covered bus shelter and trash can at north end of Montford Avenue</p> <p>Verge Apartments and UNCA each donated \$1K towards the purchase of the bus shelter</p> <p>Forever Montford led new bus shelter acquisition project and is contributing the history panel</p> <p>Montford Artist, Mandy Kjellstrom, donated painting for garden tour auction</p>

Forever Montford



828.712.2400

GrizzlybearArborcare.com

GRIZZLYBEAR ARBORCARE

tough love for trees

**SMART
FELLER
TREETWORKS**

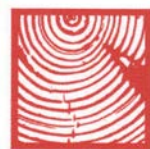
MEMBER ISA
BEST OF X
MEMBER TCA
Living Wage CERTIFIED
just economic

828.545.5503 • smartfellertreeworks.com



Order your Montford Banner

Three colors to choose from: red, green, and mustard yellow. They are available at the Asheville Visitor Center, 36 Montford Ave. (828) 258-6101



LOGAN

RESTORATION & CONTRACTING

Michael Logan

828.707.8877

michael@ashevillerestoration.com

a licensed, insured, and lead-safe company

Historic Window and Door Restoration specialist

READY TO TALK REAL ESTATE?

Meet me for coffee in Montford!

The Spring Market is blooming...
 Call or email me to set up a
 time to talk!

Cate

Cate Scales - Broker/Realtor
 339 Merrimon Ave
 (828) 280-1576
 cate.scales@nestrealty.com
 www.nestrealty.com/catescales

FRUGALFRAMER

YOUR ART. / OUR PASSION.

Downtown AVL/Montford | 95 Cherry St. North
 South Asheville | 200 Julian Shoals Dr. #20

frugalframer.com

Resource Directory

Historic Walking Tours
 Stroll the neighborhood or downtown. Walking tours of historic Montford, Riverside Cemetery, Biltmore Village and downtown Asheville, call 777-1014.

Smart Feller Tree Works
 • Ira Friedrichs • 545-5503 (NEW cell) • irafriedrichs@gmail.com.
 Down trees got you down? Contact us for all your tree removal and pruning needs! We are locally licensed and insured. Please call for free estimates. Montford references available. Thanks.

Square Peg Construction Inc.
 Add beautiful custom woodwork to your historic home: New upgrades like wood paneling, built-in cabinetry, trim, doors, stairs and railings. Small details add big impact! Montford references.
 • Call your neighbors, Leslie and David Humphrey 277-5164



**BUNCOMBE
COUNTY
GOVERNMENT**
— NORTH CAROLINA —

Coronavirus (COVID-19) Community Update for April 5, 2022

April 5, 2022 Update: Buncombe County Experiencing Low Level COVID-19 Community Level for Third Straight Week

The COVID-19 case rate in Buncombe County has remained low and stable for about three weeks. Since our last update on March 16, the case rate has dropped from 54 cases per 100,000 to 40 cases per 100,000. While this is an improvement, there has been no significant change over the last three weeks and a low level plateau is emerging. Sadly, three COVID-19 deaths were recorded between March 25 and April 1, bringing the total number of COVID-19 related deaths of Buncombe County residents up to 552.

Buncombe County uses the Centers for Disease Control and Prevention (CDC) COVID-19 Community Level tool to help monitor COVID-19 by County and inform safety guidelines and prevention. The Buncombe County COVID-19

Community Level status remains low (green), meaning that the community recommendations at this time are to stay up to date on vaccines and get tested if symptoms or exposed.

While there has not been much change in the overall proportion vaccinated amongst the different age groups, each week we do continue to see total number of vaccinations administered increase. Stacie Saunders, Buncombe County Public Health Director, reminds the community to take action to protect against getting and spreading COVID-19 and says, “Be aware of symptoms or exposure to those with COVID-19 and get tested if you have been exposed or feel ill. If you are high risk for severe illness, talk to your provider about COVID treatment options.”

All COVID-19 vaccines, boosters, and second boosters (for eligible populations) are available at the Buncombe County Health Department Immunization Clinic at 40 Coxe Ave. This clinic is open Monday-Friday from 8 a.m.-4:30 p.m., and COVID-19 vaccines are available on a walk-in basis. Visit yourshot.nc.gov for additional vaccine providers near you. While case rates are declining, it is important continue to stay home and away from others if you are symptomatic or have tested positive for COVID-19 to keep from spreading it to others. Testing is available in many locations. If you need to be tested for COVID-19, click here to find testing near you. Please visit <https://covid19.ncdhhs.gov/treatment> for more information on available treatments and providers in our area.

Last week, Buncombe County hosted “Let’s Talk COVID Treatment Options” facilitated by Buncombe County Medical Director Dr. Jennifer Mullendore and featuring local medical providers. View that town hall in English here and in Spanish here.

The federal government Test to Treat program has expanded to include urgent cares and local pharmacies. Through this program, people are able to get tested and if they are positive and treatments are appropriate for them, receive a prescription from a health care provider, and have their prescription filled all at one location. To find local Test to Treat locations, go to <https://aspr.hhs.gov/TestToTreat/Pages/default.aspx>.

Get more information here:

<https://www.buncombecounty.org/countycenter/news-detail.aspx?id=18543>

PLANT SALE!



Saturday, April 30, 2022, 9AM to 3PM

** Drive-Thru & Socially-Distanced Shopping · Masks Required **

Herb & Veggie Starts, Bedding Plants, Hanging Flower Baskets, Perennials, Multi-Flower Terra Cotta Pots, Hanging Fern Baskets

Montford North Star Academy PTO

** An Asheville City Schools Public Middle School **

90 Montford Avenue • Next to the Chamber of Commerce

Save 20% with Quantity and Your Asheville Go Local Card

- Herb & Vegetable Starts ~ 4-Pack ~ \$4
- Bedding Plants ~ 4" Black or Green Pot ~ \$5
- Perennial Plants ~ 8" Trade Gallon Pot ~ \$10
- Hanging Ferns & Hanging Annual Flower Baskets ~ \$24
- Mixed Flowers ~ 12" Terra-Cotta Pot ~ \$32

Yes! Save 20% on any mix of 12 or more with Go Local Card

Grown by the residential recovery program at First Step Farm of WNC, LLC, in Candler, NC. Asheville Go Local Cards will be available for \$20 and offer discounts at over 500 local businesses. In case of inclement weather, we may reschedule for Sunday, May 1, 2022, or Saturday, May 7, 2022. Photo Courtesy of First Step Farm of WNC, LLC.

Montford Convenience Store

Your local neighborhood store

Hours:

Monday thru Saturday - 8am to 11pm

Sunday - 9am to 10pm

231 Montford Avenue • phone 828-258-1879



Paul Dixon

828.215.7772

PDIXON77@YAHOO.COM

**COMMERCIAL ■ RESIDENTIAL ■ INTERIORS
EXTERIORS ■ LICENSED**

Forever Montford

GO AHEAD - PLANT THAT TREE

And the MNA will give you up to \$300 to do it.

The Montford Neighborhood Association will pay up to 50% of your cost for planting a tree on your property - up to \$150 per tree and up to \$300 total per household.

Since September 2019, the MNA has helped fund 63 trees, awarded \$3,400 for tree planting, and leveraged over \$15,000 worth of tree planting projects.

Any Montford property owner, renter, or local organization may apply. Applications will be processed on a first-come, first-serve basis. Award of grants is at the discretion and funding availability of the MNA.

Although “fall is for planting”, spring is a fine time too!

Find additional information and the grant application at Montford.org.

Click “Links” then “Tree Grant”

or go to this link: http://montford.org/wp-content/uploads/2019/12/TreeGrant_2019_1209.pdf





**We'll Do the Working.
 You Do the Retiring.**

With 21 years of financial planning expertise behind us, we believe your hard-earned resources should keep working for you long after you retire. With a partner like us on your side, you can find the clarity you need to plan the retirement you deserve.

Get started with a free consultation at sfginfo@raymondjames.com

SQUARE PEG
 We're Different

828-277-5164
 FINISH CARPENTRY
 CABINETS
 DESIGN
 □
 Asheville

Join the Montford listserv.

The Montford listserv is a neighborhood discussion list. This is a place where you can exchange news about the neighborhood. Visit Montford.org to learn more.

PLANNING WITH HEART. INVESTING WITH PURPOSE.

STARKS FINANCIAL GROUP

starksfinancial.com
 828.285.8777 | 877.285.RJFS (7537)
 440 Montford Avenue, Asheville, NC 28801

Starks Financial Group is not a registered broker/dealer and is independent of Raymond James Financial Services. Securities offered through Raymond James Financial Services, Inc., Member FINRA/SIPC. Investment advisory services offered through Raymond James Financial Services Advisors, Inc.



Historic Resources Commission of Asheville and Buncombe County

Montford Action Agenda 02/09/22

Present: Chair Emily Kite, Gail Lazaras, Will Hornaday, Sara Groce, Sioux Oliva, James Vaughn, Stephanie West, Shannon Watkins

Absent: Vice-Chair Emily Spreng, Georgene Falcon (resigned)

Staff present: Alex Cole, Shannon Tuch, Avery Tew, Jannice Ashley

Item, Summary and Action

134 Flint Street (PIN 9649222527) - After the fact request to add roof covering over front entry and change design of approved front entry doors on newly constructed accessory structure.

Action—Approved

101 Santee Street (PIN 9639855198) - Construct new two-story, 2,360 square foot primary structure.

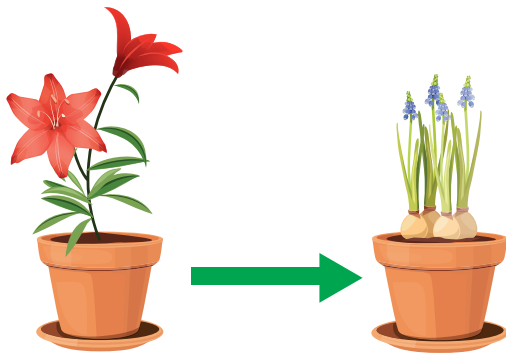
Action—Approved with conditions

HRC Application Portal

The city is now accepting HRC applications digitally via the Development Portal at this address:

<https://develop.ashevollenc.gov/>

Please refer to the website (www.ashevollenc.gov) for the full approved minutes after the following month's meeting.



Giant Plant Swap!

Bring a plant/take a plant or just buy plants \$4 each

Native species preferred

Sunday May 8, 9AM – 2PM, at 39 Courtland Avenue, Asheville

All proceeds go to the Blue Ridge Naturalist Network



HAPPY
PASSOVER

Montford & Stumptown Stories

By the Montford Community Club*



“We have to keep telling these stories so that the history does not get lost, so the history is learned, is acknowledged, is respected - and then some action is taken towards preventing the past from repeating itself.”

~ Kimberly Collins

In February, the first installments of the Montford & Stumptown Stories video series were launched. You can watch them at montfordandstumptown.com.

A collaboration between Major Moments LLC, STM Multimedia, and Garnet Prose + Projects, the videos feature interviews with current and former Black residents of Montford and Stumptown (David Jones, Jr., Jenny Pickens, William Ray, and Kimberly Collins) who share:

- memories of Montford in recent decades when it was still majority Black;
- memories of Stumptown before most of the neighborhood was uprooted by the City of Asheville for the the Montford Recreation Complex;
- the social, emotional, and economic toll of urban renewal;
- what could have been if Black neighbors had not been displaced;
- hopes for the future, and strategies for repair including the Montford & Stumptown Fund of the Asheville-Buncombe Community Land Trust.

In addition to the videos, the “Resources” page at that same url includes historical research which gives additional context to the stories shared.

We look forward to video screenings and community conversations towards the goal of acknowledging the past and taking action towards new outcomes.

Also, the ABCLT has a fund for households in need of property tax relief, let us know if you or one of your neighbors needs assistance.

Want to learn more or support these initiatives? You can go to the “Connect” page at montfordandstumptown.com to sign up for email updates, to host an event, to request a yard sign - or to ask any questions you may have.

*an informal group of neighbors neighboring



Forever Montford

WELCOME PACKET

Randy Hall

Forever Montford, a committee of the Montford Neighborhood Association (MNA) has created a Welcome Packet for new Montford residents. The packet contains information such as a brief history of Montford, a list of MNA board members along with contact information, Montford listserv, Montford newsletter, neighborhood parks, events (due to ongoing COVID-19 concerns, be sure to confirm event dates/times), restaurants, maps, volunteer opportunities and much more. Packets are being delivered by MNA board and Forever Montford committee members upon learning of new residents. Recipients of the Welcome Packet have shown great appreciation with one neighboring writing, "Looks like we lucked out in the neighbor and neighborhood department! I appreciate the history and local information. Well done, and thank you for your thoughtfulness." If you are new to Montford or know of a new resident, please



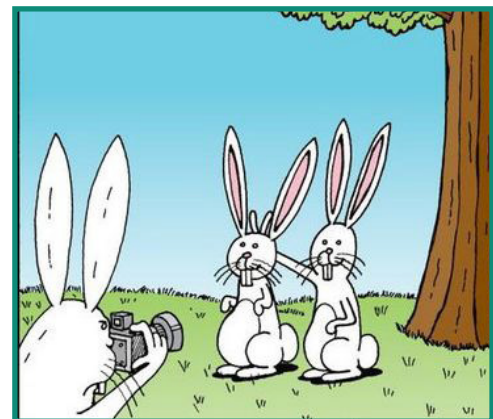
contact one of the below, and we will coordinate delivery of a Welcome Packet.

Randy Hall: cpabanker@yahoo.com

Leslie Humphrey: leslie@squarepeginc.net

Ashima Nair: ashimanair@gmail.com

Lynn Raker: lynn.raker@gmail.com

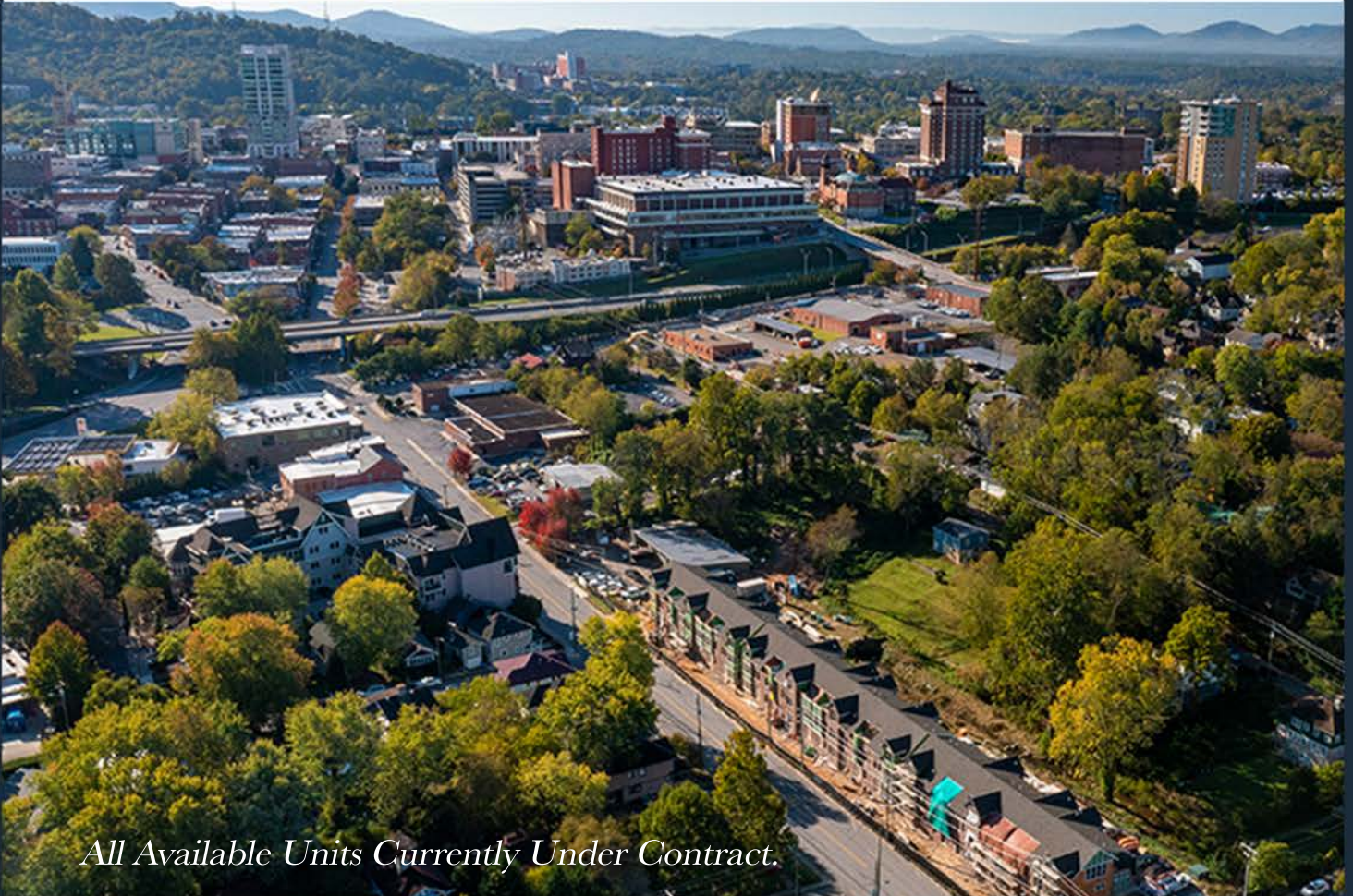


Happy Easter



The BROADWAY

≡ ASHEVILLE'S INSPIRED BROWNSTONE LIVING ≡



All Available Units Currently Under Contract.

“We wanted to bring a different experience to downtown Asheville living—spacious homes offering desirable amenities and a lifestyle located in a historic neighborhood where everything is at your doorstep.” -*Jay Lurie & Kevin Kerr, Brokers | Developers*



— THE —
**REAL
ESTATE**
— CENTER —

*Located in Asheville's
#FivePointsBroadway neighborhood*

Jay Lurie & Kevin Kerr, Brokers | Co-Developers
Info@TheBroadwayAsheville.com

TheBroadwayAsheville.com

≡ **B** ≡



Pack Memorial Library 67 Haywood Street in downtown Asheville

“The only thing that you absolutely have to know, is the location of the library.” —Albert Einstein

Are you new to the neighborhood or has it been a long time since you last visited Pack Memorial Library in downtown Asheville? There are endless resources to explore or to discover:

- **Over 150,000 items available for browsing and lending.** These resources include books, periodicals, CDs, DVDs, and research materials. The library also participates in statewide resource sharing and offers inter-library loans.
- **Free internet access, public computing, and Wi-Fi.** Photocopy and printing services are available for a small fee.
- **Free laptop and hotspot lending program.** Laptops and hotspots are now available for a free 30 day loan with a library card.
- **Free tickets to local attractions.** Use your library card to sign up for Zoom passes, which are free tickets to local attractions like the WNC Nature Center, the NC Arboretum, or the Asheville Museum of Science.
- **Free digital audiobooks, e-books, magazines, and movies.** The Libby app from Overdrive provides downloads of these items to your smart phone, tablet, or computer. It's like an Audible subscription service, but free with your library card.
- **A vibrant and inviting children's library.** The library has books for all ages and reading levels, and board games, and sporting equipment available to lend.

- **Thousands of unique local historical records, photographs, maps, and memorabilia.** The Buncombe County Special Collections Library provides researchers the resources and expertise they need to understand and interpret the history of Western North Carolina.
- **Bookends Used Bookstore offers bargain prices for a wide variety of books and media, including vintage and collectible materials and bestselling fiction.** Proceeds from the sales benefit the library programming.

For more information, visit the library or their website:

<https://www.buncombecounty.org/governing/depts/library/branch-locations/pack-memorial.aspx>

Parking in the Civic Center parking ramp is free for the first hour. The library is also walkable from the Montford neighborhood.





**TRUSTED &
PROFESSIONAL
COMPUTER
REPAIR
SERVICES
FOR BUSINESSES**

ONE CLICK FIX
438 Montford Ave,
Asheville, NC 28801
info@oneclickfix.com
www.oneclickfix.com

One Click Fix provides exceptional tech support for all your business needs. Call today to get a quote on our remote services that will keep your network and devices up and running 24/7/365.





THE FASTEST AND MOST RELIABLE SERVICE IN ASHEVILLE

ONE CLICK FIX 828-318-8558

Green Corner

Mitch Russell

Ah, spring or on a day like today, late winter. With spring comes yard work. And of course the cacophony of leaf blowers and lawn mowers.



I had never done much research on gas-powered lawn mowers or leaf blowers, but WOW, do they pollute!! Since rising temperatures in spring and full-on warm-hot temperatures begin in summer lead to increased pollution and haze thought this would be good for this month's Green Corner.

I found an article from Princeton's Student Climate Initiative that highlighted the pollution. From the article: "EPA data has found that gas-powered lawn mowers make up 5% of total air pollution in the US, amounting to even more in urban areas." It further stated that "A four-stroke lawn mower operating for just one hour equates to a vehicle traveling for 500 miles." For comparison that is the driving distance from here to Gainesville, FL.

Leaf blowers, in particular two-stroke engines, are a lot worse. A whole lot! From an article in the Washington Post that quoted a 2011 study performed by Edmunds' InsideLine.com, a vehicle enthusiast website, "A consumer-grade leaf blower emits more pollutants than a 6,200 pound 2011 Ford F-150 SVT Raptor." The study also stated, "A Ryobi 4-stroke blower kicked out almost 7 times more oxides of nitrogen, NOx, and 13.5 times more carbon monoxide, CO, than the Raptor. An Echo 2-stroke leaf blower performed even worse, generating 23 times more carbon monoxide, CO, and nearly 300 more times non-methane hydrocarbons, NMHC, than the truck."

Per ghgonline.com, "Carbon monoxide (CO) is only a very weak direct greenhouse gas but has important indirect effects on global warming. Carbon monoxide reacts with hydroxyl (OH) radicals in the atmosphere, reducing their abundance." This is bad news since OH is the key oxidant in the global atmosphere as it controls the concentrations of

toxic gases like carbon monoxide and climate-relevant gases like methane based on an article on nature.com.⁴

What to do? Reel mowers and raking are the least damaging options followed by electric lawn mowers and blowers. Electric options create pollution during their electrical charging unless you're off-grid. If you use a lawn service switch to one that uses electric or ask your service to change. You are paying them after all. With the above options, you'll get the added benefit of less noise.

Happy spring!

1. <https://psci.princeton.edu/tips/2020/5/11/law-maintenance-and-climate-change>
2. <https://www.edmunds.com/about/press/leaf-blowers-emissions-dirtier-than-high-performance-pick-up-trucks-says-edmunds-insidelinecom.html>
3. [http://www.ghgonline.org/otherco.htm#:~:text=Carbon%20monoxide%20\(CO\)%20is%20only,the%20atmosphere%2C%20reducing%20their%20abundance](http://www.ghgonline.org/otherco.htm#:~:text=Carbon%20monoxide%20(CO)%20is%20only,the%20atmosphere%2C%20reducing%20their%20abundance)
4. [https://www.nature.com/articles/s41612-018-0041-9#:~:text=The%20hydroxyl%20\(OH\)%20radical%20is,and%20Cl%20radicals%20impact%20ozone](https://www.nature.com/articles/s41612-018-0041-9#:~:text=The%20hydroxyl%20(OH)%20radical%20is,and%20Cl%20radicals%20impact%20ozone)



The Montford Newsletter is published online by the Montford Neighborhood Association, P.O. Box 7181, Asheville, NC 28802, for the residents of Asheville's first historic neighborhood. We welcome articles and advertising by the 20th of the month.

Note: Opinions expressed in this newsletter by contributing authors do not necessarily reflect the official policy or position of the MNA.

Contact Editor Ross Terry at ross@krtdesign.com, 230-7439 for more information.