



MONTFORD

THE NEWSLETTER OF ASHEVILLE'S MOST HISTORIC NEIGHBORHOOD
Vol. 27 No. 2

FEBRUARY '22

FEBRUARY

Black **History Month**

Valentine's Day

Mardi Gras

National Freedom Day

CHINESE NEW YEAR

GROUNDHOG DAY

National Wear Red Day

SUPER BOWL SUNDAY

Presidents' Day

Lincoln's Birthday

Looking for your favorite Celebration or Holiday? Visit this address for a day-by-day February listing:

<https://nationaltoday.com/february-holidays/>

Tempie Avery Center...2

Meeting postponed...2

**10 African American
Innovators...3**

Go Local Asheville APP...4

Coronavirus Update...6

Concerts with a Cause...7

HRC...9

Kudzu Culture...11

From the Vault...13

Pack Library...14

Resource Directory...14

**Position Available
at CAN...16**

Sinkhole Status?...17

BearWise...17

Green Corner...18



TEMPIE AVERY MONTFORD CENTER

Mark Your Calendar

Montford Youth and Pre-Teen Afterschool Programs—Monday-Friday from 3-6pm

Montford Glow Night Dodgeball

February 26 from 6-9pm
Ages: 6-12

Community Access Art Nights

February 4 (Fantasy Art) and February 18 (Cubism) 6-8pm
Open to Community

Stretch and Grow Yoga (Parent and Toddler)

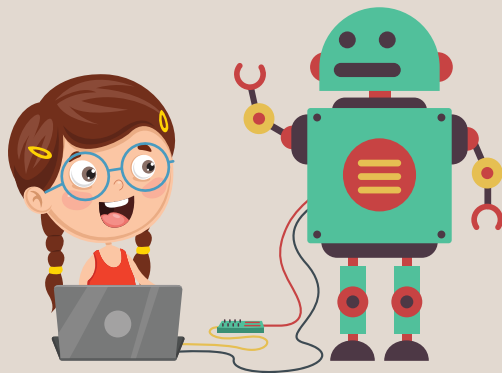
February 2, 9, and 16 from 10-10:30am

Messy Morning Toddlers

February 7, 9, and 11 from 11-12pm

Robotics 101

February 3, 10, and 17 from 6:30-7:30pm



Climbing Together (Women's Climbing Program)

February 4, 11, and 18 from 6-8pm
Ages: 18 and older

Climbing Wall Belay Clinic

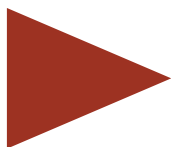
February 10 and 17 from 5-6pm
Ages: 12 and older

For more Information Contact:

Seth Jackson
Recreation Facility Manager
Tempie Avery Montford Center
Asheville Parks and Recreation
828-253-3714 - Office
828-337-2403 - Business Cell
sjackson@ashevillenc.gov



Postponed community meeting



The January community meeting was postponed due to Covid-19 concerns. We are sorry for the delay, but we want all Montford residents to be as safe as possible. We plan to reschedule and communicate the new timing when it is available.

Thank you for your patience— The Montford Neighborhood Association



Top left to right

Granville Woods: Prominent inventor and electrical engineer and known as “Black Edison.”

Katherine Johnson: NASA research mathematician.

Lonnie Johnson: NASA engineer who invented the Super Soaker.

Mae Jemison: NASA astronaut and the first black woman to travel into space.

Marc Hannah: Global pioneer in computer graphics.

Bottom left to right

Mark Dean: American inventor and computer engineer.

Otis Boykin: His inventions include electrical resistors used in computing, missile guidance, and pacemakers.

Patricia Bath: Invented laserphaco cataract surgery.

Roy Clay: Founding member of the computer division at Hewlett-Packard.

Shirley Ann Jackson: Theoretical physicist and the first African American woman to receive a doctorate from MIT.

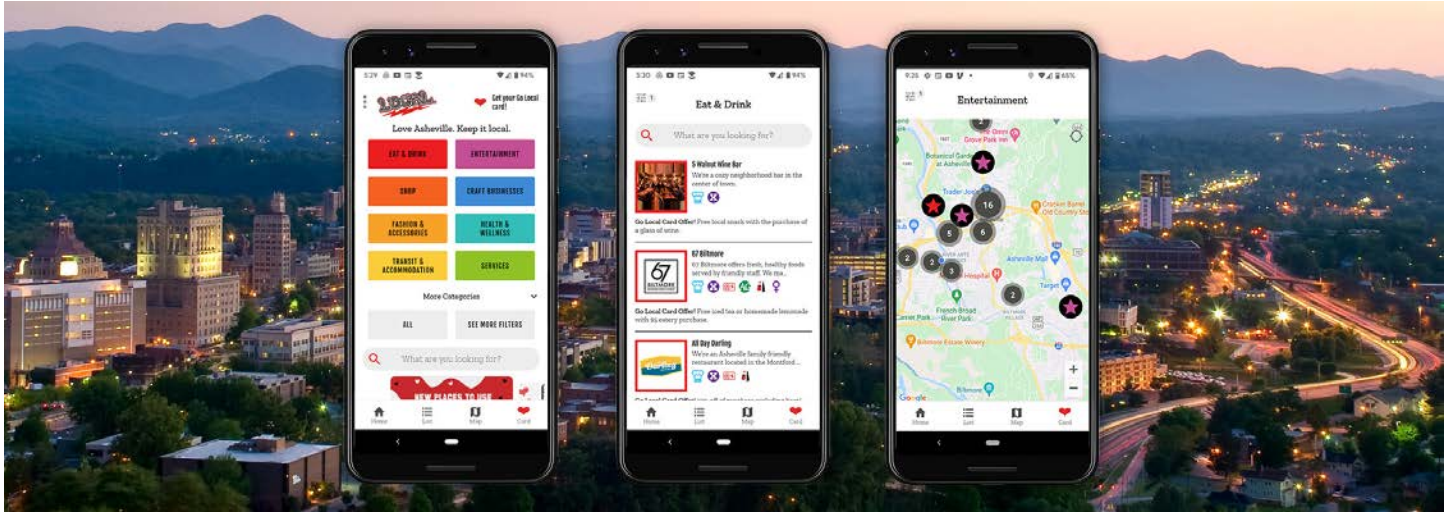


828.712.2400

GrizzlybearArborcare.com

**GRIZZLYBEAR
ARBORCARE**

tough love for trees



GO LOCAL ASHEVILLE UNVEILS FIRST-EVER APP

Mayor Manheimer Proclaims February as Love Asheville, Go Local! Month.

For More Information,

Contact: Sherree Lucas, Executive Director sherree@golocalasheville.com

“Coinciding with **Love Asheville, Go Local! Month** in February, the not-for-profit **Go Local Asheville** organization—which supports local independent businesses and its customers—has announced the historic launch of a **first-ever app** to better serve Asheville area business and card members,” Go Local Asheville Executive Director Sherree Lucas said today.

The free digital app is now available on Apple Store and Google Play for both Apple and Android smartphones. While the app is free and downloadable for everyone to conveniently find and support local independent businesses, only **Go Local Asheville cardholders** can take advantage of the discounts and perks offered by the over 500 participating local independent business members. To become a cardholder, cards can be purchased for \$20 each at 30 different businesses throughout Asheville or on the Go Local Asheville website. To become a business member, there is no charge. The only requirement is to offer a discount or perk to Go Local Asheville cardholders.



“The app, Go Local Asheville, resulted from surveys taken by our business members and cardholders,” said Lucas. “Over seventy percent of business members, in response to asking for ideas of ways Go Local could be more impactful

to their business or the independent business community, responded to offer an app. And when cardholders were asked what Go Local could do to increase the frequency of using their card, many responded with a digital option.”

Lucas continued, “While we love the print directory, and we know our cardholders do, too, in most cases they don’t carry it with them when they’re shopping, or it gets misplaced. And going to the directory on our website isn’t as convenient as opening an app on a smartphone to find local participating businesses or to look up a particular store’s offer before they purchase.”

Since the Go Local movement began in 2012, it has become one of the city’s true success stories. Memberships have soared from 12 participating businesses in its first year to nearly **550 today**, while individual Go Local cardholders have topped **4,000 annually** for the last two years.

“Beyond helping small businesses recover from the challenges presented by COVID, we can ensure that Asheville retains its unique, eclectic culture that has

popularized our city for both local residents and visitors alike,” said Lucas. “Go Local is committed to helping preserve what’s special about Asheville.”

To raise even more awareness, February recently was proclaimed **“Love Asheville, Go Local Month” by Mayor Esther Manheimer and the City of Asheville**. The proclamation “urged all citizens to join in this celebration and Go Local, Buy Local and Think Local First now and throughout the year.”

In addition to the usual special offers and discounts by businesses, Lucas announced today that **Go Local Asheville will offer value-added, free online classes** by Go Local business members to cardholders and other business members. According to Lucas, “We continue to look for ways to connect our cardholders and business members. Offering classes taught by our business members is a way to build community, awareness and new customers!”

To see the class schedule and sign-up for these free classes, go to [Love Asheville - Go Local Month Class Schedule and Registration Links | Go Local Asheville](#).

Lucas’ passion for supporting and preserving what makes Asheville such a special mountain community goes beyond the cost savings and perks a Go Local cardholder can benefit from. She sees it as a civic duty.

“If you’re not a Card-Carrying Local, we hope you’ll become one. We all need to be card-carrying locals. It’s an investment for our future, both in terms of ensuring a thriving and unique business community and also educating our youth. We also shouldn’t forget that these owners are your neighbors. By supporting local businesses, you’re supporting your neighbors and friends. And it’s such a nominal cost to join the Go Local Movement.”

For more information on participating in Love Asheville, Go Local or finding the complete events calendar for February, go to www.golocalasheville.com.

SMART FELLER TREEWORKS

ISA
BEST OF WESTASHEVILLE
MEMBER TCIA
LIVING WOODS CERTIFIED
just economic

828.545.5503 • smartfellertreeworks.com

Order your Montford Banner

Three colors to choose from: red, green, and mustard yellow. They are available at the Asheville Visitor Center, 36 Montford Ave. (828) 258-6101

LOGAN RESTORATION & CONTRACTING

Michael Logan
828.707.8877
michael@ashevillere restoration.com

a licensed, insured, and lead-safe company
Historic Window and Door Restoration specialist



**BUNCOMBE
COUNTY
GOVERNMENT**
— NORTH CAROLINA —

Coronavirus (COVID-19) Community Update for Feb. 1, 2022

While Omicron Surge Shows Signs of Decline; Hospitalizations and Deaths Remain High in Buncombe County

The Omicron surge has been rapid in its climb and intense in the burden of cases. About 12,700 new cases were added to our total number of cases in the last month, averaging out to around 410 cases per day and almost 3,000 cases per week. With this recent surge, Buncombe County has now reached 46,000 total cases of COVID-19 identified since March 2020. However, we are beginning to see a decline in new cases and percent positivity. As of yesterday, we have seen the case rate decrease from 907 new cases to 875 new cases per 100,000. This decline appears to be continuing today. Additionally, the percent positivity has declined for the first time since mid-December. For the last week or so, we have been experiencing percent positivity well over 25% and now, we find the percent positivity at around 24%.

Western North Carolina regional hospital data shows continued increase in inpatient beds occupied with COVID-19 and a steady increase in ICU utilization. For the Mission Hospital system, inpatient beds with COVID-19 have experienced a high stabilization. Sadly, 13 new deaths have been reported for the dashboard and this brings our death rate from 4.2 deaths per 100,000 per week to 5 deaths per 100,000 in this last week. There have been a total of 488 COVID-19 related deaths in Buncombe County.

Public health officials are hopeful that these trends will show a more prominent decline. Stacie Saunders, Buncombe County Public Health Director says, “We expect cases to continue to decrease, it is likely that the hospitalizations and deaths may also begin to see a decrease in the next several days to weeks. That being said, we are clearly still a community with high transmission and it’s important to continue to take the basic steps to protect yourself with the tools that we have to fight COVID-19.”

Over the last few weeks, Public Health and Emergency Management have been working to obtain and allocate at-home test kits to the community to create a temporary bridge for the community to access at-home testing while testing demand was high. Through parallel paths of distribution dedicated to equity and general population distribution, 34 unique organizations were allocated about 5,100 test kits and 15,000 masks, and 18 fixed sites distributed over 6,600 test kits and 12,000 masks.

Get more information here:

<https://www.buncombecounty.org/countycenter/news-detail.aspx?id=18543>



Concerts with a Cause

Live Music at Hazel Robinson Amphitheatre

As the weather begins to turn towards Spring, we all too will begin to enjoy more time outdoors. Both long-time residents and newcomers alike, have found community and outdoor beauty in Montford, and all are able to do so at the enchanting Hazel Robinson Amphitheatre.

Nestled into the neighborhood's rolling hills, the amphitheatre is home to the Montford Park Players (MPP), North Carolina's longest-running Shakespeare Company, and is considered to be a "hidden gem" of Asheville.

In 2018, MPP began collaborating with Plugged-In Productions, a small independently owned production company founded here in Asheville, bringing live music to their stage and our community. Each concert hosted at the amphitheater directly supports the non-profit theatre's mission, to provide exceptional dramatic entertainment for the enrichment, education, and enjoyment of their audiences free of charge.

The live music events held at Hazel Robinson Amphitheatre have been a tremendous success and have raised substantial revenue for MPP, something that has been critical throughout the COVID-19 pandemic. In fact, the funds have allowed the amphitheatre to keep its figurative doors open while other venues struggled or shut down altogether. MPP and music lovers in Montford and Western North Carolina (WNC) aren't the only groups benefiting from the well-curated line-up of live shows at the amphitheatre. As part of the venue's commitment toward the betterment of the Asheville community, concert event staff includes familiar faces from MPP and consists largely of local service industry professionals still recovering from the brutal financial impacts of the pandemic.

Concert highlights have included locally-loved and homegrown artists, up and coming stars, and award-winning Americana, Country, and Bluegrass legends – the likes of Balsam Range, Fireside Collective, Jon Stickley Trio, Songs from the Road Band, The Nude Party, Molly Tuttle, Charley Crockett, Jerry Douglas, Sam Bush and Del McCoury, to name a few, all made memorable appearances on the amphitheatre's stage! Plugged-In Productions recently announced folk-influenced, Japanese progressive rock band, Kikagaku Moyo,



Sam Bush Concert

who will claim the stage at Hazel Robinson Amphitheatre in May 2022 as part of the band's final tour. Additional concerts will be announced soon.

So, next time you are looking to spend some time outdoors in the neighborhood, think of Hazel Robinson Amphitheatre, and when you do, think of Shakespeare and live music. Every concert ticket

purchased and each concession item sold during live music events at the amphitheatre directly supports MPP's mission and staff, and helps fund future venue upgrades.

Please show your continued support for live music at Hazel Robinson Amphitheatre by joining us [HERE!](#)

Details on upcoming concerts can be found at hazelrobinsonamphitheatre.com or on social media @ [hazelrobamp](#) and [@pluggedintunes](#).

We are looking forward to a fantastic 2022 season and continuing to grow together into the future with the support of our Montford community. To engage with us about happenings at the venue, email us at info@plugged-inproductions.com. We want to hear what you love about live music at Hazel Robinson Amphitheatre and how we can improve upon what we've built thus far!



MONTFORD PARK
PLAYERS



PLUGGED-IN
PRODUCTIONS



**SQUARE
PEG**
We're Different

828-277-5164
FINISH CARPENTRY
CABINETS
DESIGN
Asheville

**Join the
Montford
listserv.**

The Montford listserv is a neighborhood discussion list. This is a place where you can exchange news about the neighborhood. Visit Montford.org to learn more.

**We'll Do the Working.
You Do the Retiring.**

With 21 years of financial planning expertise behind us, we believe your hard-earned resources should keep working for you long after you retire. With a partner like us on your side, you can find the clarity you need to plan the retirement you deserve.

Get started with a free consultation at sfginfo@raymondjames.com

PLANNING WITH HEART. INVESTING WITH PURPOSE.

**STARKS
FINANCIAL
GROUP**

starksfinancial.com
828.285.8777 | 877.285.RJFS (7537)
440 Montford Avenue, Asheville, NC 28801

Starks Financial Group is not a registered broker/dealer and is independent of Raymond James Financial Services. Securities offered through Raymond James Financial Services, Inc., Member FINRA/SIPC. Investment advisory services offered through Raymond James Financial Services Advisors, Inc.



Historic Resources Commission of Asheville and Buncombe County

Montford Action Agenda 01/12/22

Present: Chair Emily Kite, Vice-Chair Emily Spreng, Gail Lazaras, Will Hornaday, Sara Groce, James Vaughn, Stephanie West, Sioux Oliva, Georgene Falcon, Shannon Watkins

Absent: None

Staff present: Alex Cole, Shannon Tuch, Avery Tew, Jannice Ashley

Item, Summary and Action

43 Elizabeth Place (PIN 9649228855) - Construction of a two-story, 3,109 square foot primary structure.

Action—Continued to February meeting

124 Montford Avenue (PIN 9649121176) - Subdivision of 0.64 acre lot into one 0.33 acre lot and one 0.34 acre lot.

Action—Approved

162 West Chestnut Street (PIN 9649029441) - Removal of rear addition and relocation of cellar doors.

Action—Approved with conditions

144 Flint Street (PIN 9649221658)- Alteration of section of roof and replacement of existing stairway and landing on rear elevation.

Action—Approved

74 Courtland Avenue (PIN 9649025182) - Demolition of existing accessory structure and construction of a new one-story, 452 square foot accessory structure.

Action—Approved with conditions

HRC Application Portal

The city is now accepting HRC applications digitally via the Development Portal at this address:

<https://develop.ashevillenc.gov/>

Please refer to the website (www.ashevillenc.gov) for the full approved minutes after the following month's meeting.

Montford Convenience Store

Your local neighborhood store

Hours:

Monday thru Saturday - 8am to 11pm
Sunday - 9am to 10pm

231 Montford Avenue • phone 828-258-1879



Paul Dixon
828.215.7772

PDIXON77@YAHOO.COM

COMMERCIAL ■ RESIDENTIAL ■ INTERIORS
EXTERIORS ■ LICENSED



Happy Valentine's Day



HOW TO MAKE HIM HAPPY:

If your Valentine is a

- Boy Friend
- Husband
- Brother
- Uncle
- Nephew
- Father

—you can short-cut to his heart with some of the "just right" Valentine ideas advertised on this page by your local merchants.



HOW TO MAKE HER HAPPY:

If your Valentine is a

- Sweetheart
- Wife
- Sister
- Aunt
- Niece
- Mother

—win her smile this Valentine's Day with some of the lovely feminine gifts suggested in the ads below. Every one is a winner!

SEND YOUR VALENTINE

Growing Plants

Give her a lovely flower that she can care for and watch grow. She'll admire its beauty and appreciate your thoughtfulness. We have a big variety of blooming and foliage growing plants.

Potted Plants, Blooming and Foilage, 35c to \$1.50

Flower Stands and Pots, \$1.25 up.

60 College Street Phone 587
The Garden Shop
 ASHEVILLE SEED COMPANY

VALENTINE'S DAY
 FEB. 14TH

For Valentine
 DECORATED
 Cakes and Cookies

Place your order now to insure prompt service.

QUALITY BAKERY
 12 N. Park Square

BEAUTIFUL VALENTINES
 1c to \$1.00
 Home Made Candies
ELEANOR ELIZABETH SHOP
 34 College St. Phone 4837-3

SCHRAFFT'S CHOCOLATES

Present her with a beautiful box, filled to overflowing with these fine chocolates. Select from our big, fresh stock.

THE NUT SHOP
 MARIE TROY'S CANDIES
 8 N. Park Square

Find The Key To His Or Her Heart In These Ads

SCHRAFFT'S CHOCOLATES

St. Valentine's Day
 February 14th

HEARTS OF SWEETS FOR SWEETHEARTS
 DESIGNED FOR GIVING

Present her with a beautiful box, filled to overflowing with

SCHRAFFT'S CHOCOLATES
 favorites of candy lovers everywhere—an eloquent token of your affection.

Make your selection from our large fresh stock.

Eckerd's 31 Patton Ave.

For the Queen of Your Heart
VALENTINE DAY DIAMONDS

5 Diamond Solitaire \$37.50 \$1 Weekly

7 Diamond Wedding Band \$27.50 \$1 Weekly

OPEN AN ACCOUNT AT LEE'S AND SAVE THE DIFFERENCE

Lee's
 IF IT'S FROM LEE'S IT'S GUARANTEED
 Next to Bon Marche

NO INTEREST OR CARRYING CHARGES

FOR Valentine's Day

You'll Find Nothing More Pleasing Than Tempting . . .

Biltmore ICE CREAM
 In Gay, Appropriate Molds

For parties—for home gatherings, for all happy occasions! Individual servings, a dozen . . . \$2

PLAIN HEART CUPID KEWPIE
 LOVE HEARTS CUPID HEART

Please Order in Advance—We Deliver as You Request
 Order Through Our Home Men or Biltmore Dealers
 . . . or Call Biltmore Dairy Farms—Tel. 6296

St. Valentine's Day
 February 14th

SCHRAFFT'S CHOCOLATES

Present her with a beautiful box, filled to overflowing with these fine chocolates. Select from our big, fresh stock.

THE NUT SHOP
 MARIE TROY'S CANDIES
 8 N. Park Square

HEARTS OF SWEETS FOR SWEETHEARTS
 DESIGNED FOR GIVING

Present her with a beautiful box, filled to overflowing with

SCHRAFFT'S CHOCOLATES
 favorites of candy lovers everywhere—an eloquent token of your affection.

Make your selection now while our stock is complete.

Lovely . . .

FOR Valentine's Day

and lovely every day in the year when you let us take care of your dry cleaning. We call for and deliver.

BILTMORE CLEANERS & LAUNDRY
 PHONE 6800

GOOD Butter-Krust

Enriched with VITAMIN B₁

AN EMINENT GOVERNMENT NUTRITION EXPERT SAYS:

"Everybody who has not changed from plain white bread to enriched white bread should do so at once as a patriotic duty."

More food value, more delicious tastiness and better health are baked into every loaf of enriched Butter-Krust Bread. Order it, fresh and tasty, from your grocer.

HOPE FOOD VITAMIN B₁ IRON THIAMIN

HEARTS OF SWEETS FOR SWEETHEARTS
 DESIGNED FOR GIVING

Present her with a beautiful box, filled to overflowing with

SCHRAFFT'S CHOCOLATES
 favorites of candy lovers everywhere—an eloquent token of your affection.

Make your selection now while our stock is complete.

IN ASHEVILLE YOU CAN GET SCHRAFFT'S AT

FATER'S
 18 Haywood—602 Haywood Rd.—Park Square

HESTER'S PHARMACY
 293 Merrimon Ave. Phone 853

JOHNSON DRUG CO.
 22 N. Park Square Phone 2141

MERRIMON AVE. PHARMACY
 219 Merrimon Ave. Phone 2387

MULLEN'S PHARMACY
 25 Montford Ave. Phone 450

SALLEY'S DRUG STORE
 83 Patton Ave. Phone 1851

CARSWELL'S CUT-RATE DRUG STORE
 45 Biltmore Ave. Phone 241

AVERA DRUG STORE
 506 Hendersonville Rd. Phone 2589

MOONEYHAM'S DRUG STORE
 2 N. Park Square Phone 340

Hello, from Kudzu Culture,

Lauren “LB” Bacchus

Over the last ten years our [Kudzu Culture](#) cohort, based in the mountains of Western North Carolina, has been learning from traditional and contemporary producers and artisans from Japan and China, as well as developing other experimental techniques for harvesting and processing various parts of the kudzu plant.

We are excited to share that we are a pending 501(c)(3) nonprofit, and have received our first grant to scale up our operations and educational initiatives, with the goal of becoming a worker-owned cooperative and educational hub for regional kudzu entrepreneurs. We are excited about numerous developing partnerships, like those with Cooperate WNC, UNC-Asheville, Urban Forest Alliance, City of Asheville Parks and Recreation Department, and Montford Neighborhood Association.

Kudzu Culture is seeking applicants, suggestions and nominations of individuals to be on our Board of Directors. If you or someone you know is interested, please send an email of interest to kudzuculture@gmail.com; subject: BOD Applicant, and we will be in touch with an application form.

In other news, Kudzu Culture is harvesting and selling high-quality, chemical-free, shredded, dehydrated kudzu root (Ge-Gen (葛根); *Pueraria montana*) from high elevation mountainsides in Western North Carolina, USA. We carefully select harvest sites that are up-mountain, and away from runoff and potential contaminants.

Order products here: etsy.com/shop/KudzuCulture

Or, if you are an herbalist or herbal company that would like to request a discount, trade, or donation, please fill out this form: forms.gle/yj3tcJx459moWYraA

If you are local to the Asheville, NC, area, you can also purchase our products at either [West Village Market](#) or through [Patchwork Alliance](#) (a very cool local goods online marketplace platform!).

Send us an email or give us a call with any questions or to learn more about how to be involved as a volunteer

with Kudzu Culture. If you are a farmer, homesteader, or property owner with areas of *clean* kudzu growth, please reach out to us about a training program where you can learn more about how to responsibly and effectively harvest kudzu roots to bring to market.

In wellness and appreciation,

Lauren “LB” Bacchus

Co-founder and Interim Director Kudzu Culture

Asheville, North Carolina, USA

28-280-7874

kudzuculture@gmail.com

www.kudzuculture.net

[FaceBook](#)

[Instagram](#)

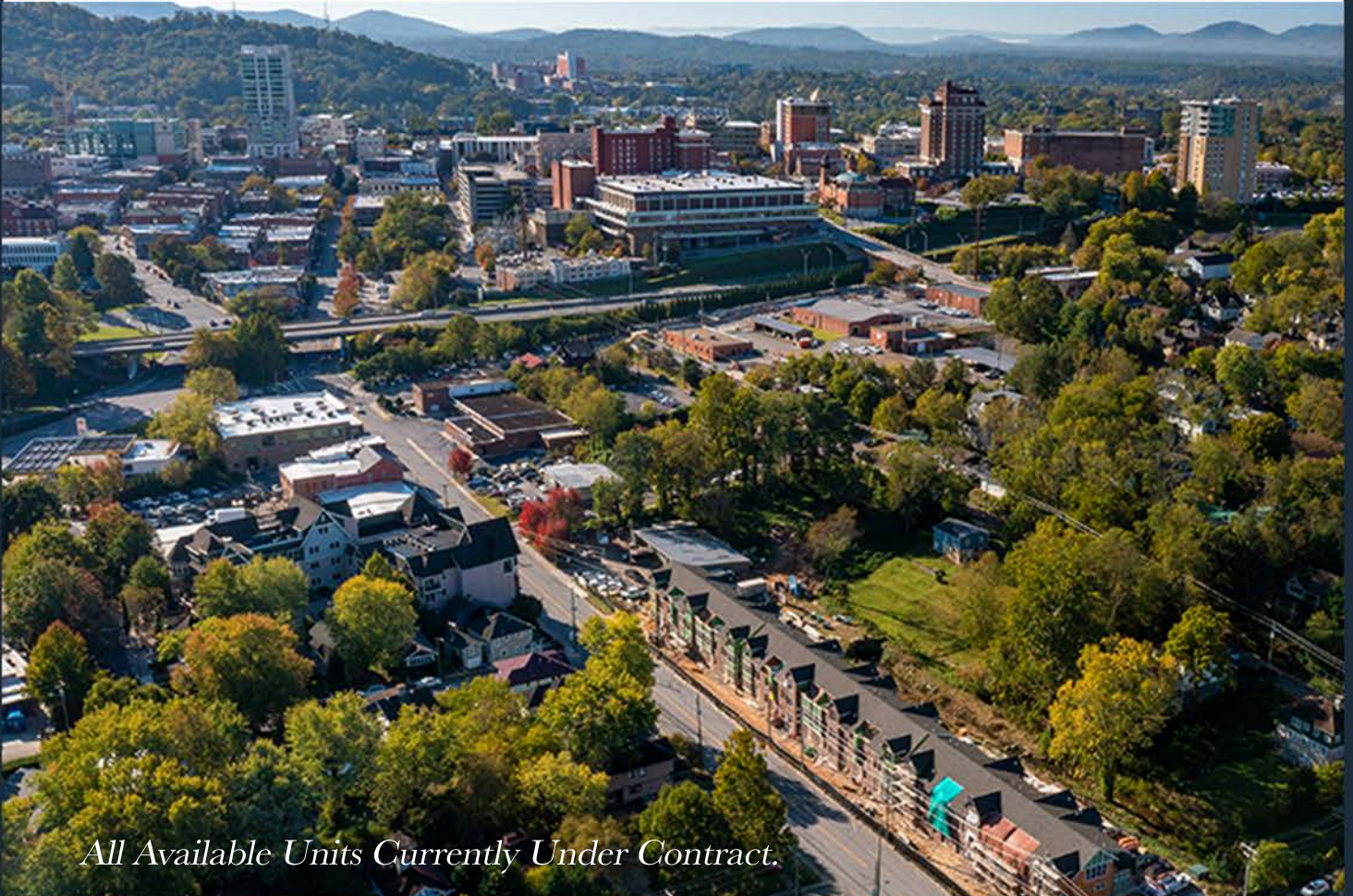
Note: There will be a collaborative workday along the Reed Creek Greenway in early spring of 2022 to remove root crowns, building on the Community through the Kudzu event held at Tempie Avery in November of 2021. More info on that community event will be forthcoming so please keep an eye out for flyers.



Here are a couple of photos from the Community Kudzu event last November.

The BROADWAY

≡ ASHEVILLE'S INSPIRED BROWNSTONE LIVING ≡



All Available Units Currently Under Contract.

“We wanted to bring a different experience to downtown Asheville living—spacious homes offering desirable amenities and a lifestyle located in a historic neighborhood where everything is at your doorstep.” -*Jay Lurie & Kevin Kerr, Brokers | Developers*



— THE —
**REAL
ESTATE**
— CENTER —

*Located in Asheville's
#FivePointsBroadway neighborhood*

Jay Lurie & Kevin Kerr, Brokers | Co-Developers
Info@TheBroadwayAsheville.com

TheBroadwayAsheville.com

≡ **B** ≡

MONTFORD

VOL. 5 NO. 4 THE NEWSLETTER OF ASHEVILLE'S MOST HISTORIC NEIGHBORHOOD Jan./Feb. 2000



Culinary Tour of Homes to be Held on February 19

The Annual Culinary Tour of Homes will be held on February 19 from 4-8 p.m. Tickets are \$15.00 and are available now at The Reader's Corner, 33 Montford Avenue.

This year there will be five homes serving appetizers and deserts to the Montford community. The homes may be visited in any order.

Willie E. Collins House, 170 Cumberland Avenue, Diane Joytner, owner. (appetizers) Mr. Collins was a native of Michigan who moved to Asheville from Flat Rock in 1888. This bold variation of the Colonial Revival style sits dramatically on a slope above the street. Architectural features include a large gambrel roof, recessed porch, and an inordinate amount of shingles.

Mr. Collins developed and marketed a cereal Biltmore Wheat Hearts. He promoted many musical events in area and was a gifted musician.

He married Louise Ashworth who birthed three daughters in the house and together they raised his three other daughters from a previous marriage.

In the 1950's they moved to the third floor while renting rooms on the lower floors. Mr. Collins died in 1955 in the third floor kitchen.

Mrs. Collins continued to live in the house and with her connections at Highland Hospital rented rooms on a long-term basis to patients with TB.

103 Flint Street, Sharon Hines,

owner. (appetizers) This 1924 cottage consists of shingle sides and a rock foundation. Richard Sharp Smith designed the home. Inside one of the closets is written "Elmer Bishop." The side of the house faces Bishop Place, leading Sharon to believe Mr. Bishop was the original owner. In 1995, the house won a Griffin Award for its renovation project.

162 Flint Street, Jean Stryker and Ricky McGrath, owners. (desserts) This home, sitting on a high embankment was built in the early 20th century. The one and a half story vernacular cottage has weatherboards sides with a shingled gable.

34 Courtland Avenue, Phyllis and Richard Stiles, owners. (desserts) This vernacular two-story bungalow was built in 1917. While there is no actual proof, it appears to be another Smith design. The home has a wide porch with Montford brackets, multiple gables and exposed rafters.

The building was saved from demolition in 1976 after being abandoned in the early 1970's.

When Phyllis and Richard moved here in 1984, the police notified them that there could be bodies buried in the basement. Acting on a tip from a suspect caught in Tennessee, the Stiles found their basement being dug up. Fortunately, the only thing the police struck was the sewer drain, which more fortunately did not break!

(please see Tour, page 5)

What Do You Think?

We are looking at possibly moving the Culinary Tour of homes from December to February permanently. While it was nice to have it in December, it is very difficult to find homes willing to participate at that time of year because of the holidays. Please contact Sharon Fahrner at 253-0982 or Lisa Sizemore at 254-4913 and let us know your feelings and input on this pending decision.

Due to the holidays and the amount of news in Montford at this time of year, we have combined the January and February newsletters. The March issue will be out at the end of February.

(Tour, continued from Page 1)

Abbingdon Green B&B, 46 Cumberland Avenue, Valerie Larrea, owner. (appetizers) Officially described as a "Colonial Revival," this house has an eclectic mix of architectural details. Richard Sharp Smith designed the house circa 1908 for David Latourette Jackson, a businessman who ran a dairy restaurant and bakery. He later worked in the real estate business.

The second and longest single owner was also the person for whom the house is officially named on the National Register. Mr. Wythe Peyton was

one of NC's first highway engineers, Asheville's Postmaster for fifteen years, and was an avid and accomplished gardener. The Peyton family owned the house for over 40 years. up through the 1950's.

Valerie purchased the home in 1993, after years of being rental property. After a Griffin Award-winning renovation, the house reopened as a B&B.

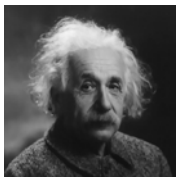
We are hoping for another large Montford turnout for this event. A very heartfelt thank you to all the hosts for opening up their homes and sharing with the community culinary delights! Without you, we couldn't do it!

22 Years Ago! The February 2000 Montford Newsletter. Editors - Dana Erwin and Jeff Kelley

From the Vault:



Pack Memorial Library 67 Haywood Street in downtown Asheville



“The only thing that you absolutely have to know, is the location of the library.”
—Albert Einstein

Are you new to the neighborhood or has it been a long time since you last visited Pack Memorial Library in downtown Asheville? There are endless resources to explore or to discover:

- **Over 150,000 items available for browsing and lending.** These resources include books, periodicals, CDs, DVDs, and research materials. The library also participates in statewide resource sharing and offers inter-library loans.
- **Free internet access, public computing, and Wi-Fi.** Photocopy and printing services are available for a small fee.
- **Free laptop and hotspot lending program.** Laptops and hotspots are now available for a free 30 day loan with a library card.
- **Free tickets to local attractions.** Use your library card to sign up for Zoom passes, which are free tickets to local attractions like the WNC Nature Center, the NC Arboretum, or the Asheville Museum of Science.
- **Free digital audiobooks, e-books, magazines, and movies.** The Libby app from Overdrive provides downloads of these items to your smart phone, tablet, or computer. It’s like an Audible subscription service, but free with your library card.

- **A vibrant and inviting children’s library.** The library has books for all ages and reading levels, and board games, and sporting equipment available to lend.
- **Thousands of unique local historical records, photographs, maps, and memorabilia.** The Buncombe County Special Collections Library provides researchers the resources and expertise they need to understand and interpret the history of Western North Carolina.
- **Bookends Used Bookstore offers bargain prices for a wide variety of books and media, including vintage and collectible materials and bestselling fiction.** Proceeds from the sales benefit the library programming.

For more information, visit the library or their website:
<https://www.buncombecounty.org/governing/depts/library/branch-locations/pack-memorial.aspx>

Parking in the Civic Center parking ramp is free for the first hour. The library is also walkable from the Montford neighborhood.

Resource Directory

Historic Walking Tours

Stroll the neighborhood or downtown. Walking tours of historic Montford, Riverside Cemetery, Biltmore Village and downtown Asheville, call 777-1014.

Smart Feller Tree Works

• Ira Friedrichs • 545-5503 (NEW cell) • irafriedrichs@gmail.com.

Down trees got you down? Contact us for all your tree removal and pruning needs! We are locally licensed and insured. Please call for free estimates. Montford references available. Thanks.

Square Peg Construction Inc.

Add beautiful custom woodwork to your historic home: New upgrades like wood paneling, built-in cabinetry, trim, doors, stairs and railings. Small details add big impact! Montford references.

• Call your neighbors, Leslie and David Humphrey 277-5164

Thinking of Selling in Montford?

I HAVE A BUYER FOR YOUR HOME!



CATE SCALES - REALTOR
828.280.1576
339 Merrimon Ave. - Asheville, NC 28801
www.nestrealty.com/catescales



FRUGALFRAMER



YOUR ART. / OUR PASSION.

Downtown AVL/Montford | 95 Cherry St. North
South Asheville | 200 Julian Shoals Dr. #20

frugalframer.com



TRUSTED & PROFESSIONAL
COMPUTER
REPAIR
SERVICES
FOR BUSINESSES

ONE CLICK FIX
438 Montford Ave,
Asheville, NC 28801
info@oneclickfix.com
www.oneclickfix.com

One Click Fix provides exceptional tech support for all your business needs. Call today to get a quote on our remote services that will keep your network and devices up and running 24/7/365.



THE FASTEST AND MOST RELIABLE SERVICE IN ASHEVILLE

ONE CLICK FIX 828-318-8558



COALITION OF ASHEVILLE NEIGHBORHOODS

Position Available at CAN

We are looking for a volunteer Vice President of Marketing & Public Relations (PR)

Vision: Vibrant neighborhoods united in purpose, strong in voice, dedicated to equality and justice.

CAN educates and informs the community about matters that concern Asheville area neighborhoods and advocates for the stability and quality of life of neighborhoods and the community. We accomplish this with an all-volunteer organization. The CAN Executive Committee (EC) consists of elected officers who plan and execute CAN's actions. As a member of the EC the CAN VP of Marketing and PR, will be responsible for creating content and messaging that will help enhance CAN's relationships with their partners and their reputation in the community.

Primary responsibilities will include:

- Communicate CAN's positions and increase CAN's visibility with Asheville neighborhoods, city staff and city elected officials.
- Manage and create content for CAN's website and social media accounts.
- Work with the EC VPs to develop a consistent message to the public and CAN members.
- Determine and execute strategy for CAN's social media.
- As a member of the CAN Executive Committee (EC)

participate in team decisions and help set EC actions that are set by the CAN Board.

- Identify needed marketing resources and recruit additional volunteers as required

Additional responsibilities:

- Manage and create content for other areas of CAN communication such as advertising, print, television and radio media.

For more information contact Rick Freeman at president@asheville-can.org



Answer Man: Montford sinkhole status? Repairs coming soon?

Question: Last November you wrote about an enormous sinkhole on Montford Avenue that started in the summer. Has it been fixed? If not, when will it be?

My answer: No, but I suspect it has a much more vibrant social media presence than I do. It's great that we live in a town where even the sinkholes are real characters.

Real answer: A fix is on the way, but these projects tend to get complicated, and this one is no exception. Located in the front yard of a rental home at 271 Montford Ave., this sinkhole emerged in July 2021.

Property owner Bruce MacPhail said Feb. 1 that they formulated a repair plan with McGill Associates Engineering late last year and have contracted with Patton Construction Group in Arden to do the actual work.

The construction company and the city of Asheville are now "hashing out" the specifications of the repair, MacPhail said.



Pedestrians walk around the sinkhole on Montford Avenue in October. The problem started in July but got worse with torrential rains in August and September.

John Boyle/eljboyle@citizentimes.com



Thanks for being BearWise

On behalf of this little cub and bears everywhere, thank you for being BearWise at home, outdoors and in your communities. When people do their part, bears can grow up healthy and wild. Even a small step in the right direction can make a big difference in the lives of bears.

Big thanks to every one of the thousands of people who've visited BearWise.org over the past year. You've read dozens of articles, downloaded countless flyers and bulletins, ordered books and magnets and stickers and signs and helped spread the word about being BearWise.

We ask everyone who downloads or orders BearWise materials what they're going to do with them. Reading their comments makes us smile and gives us great ideas, so we thought we'd share a few with all of you.

Enjoy, and Happy New Year from the BearWise Team. P.S. Watch for our "Welcome to Bear Country" packets and some exciting news coming soon.

BearWise.org - Created and Supported by State Wildlife Agencies & Bear Biologists
Thank you, Cassia Rivera, for the great photo.



Photo courtesy of Cassia Rivera

Green Corner

Mitch Russell

I am traveling from Tacoma, WA back to Asheville with my daughter who's taking a semester off from college. We're loaded to the roof w/her things, eating bad-for-us food, wearing our masks—when most folks at the Weed, CA Pilot weren't—and seeing some sights in cities big and small.

We spent the night before last in Portland and I was astounded at the amount of trash everywhere. Tacoma was not much better and we're headed to San Francisco today and will be interested to see if it's any less littered. So far Northern Cal has been relatively litter-free.

I just realized that I've not seen any wind turbines or large-scale solar farms, which is surprising. We've just come through Redding, about 215 miles north of San Francisco and quite flat with some rolling hills that are flanked by mountains several miles away. Checking Wikipedia that pulled their information from, the US Department of Energy, National Renewable Energy Laboratory, TrueWind Solutions, I found that the Redding area is marginal to fair for wind energy production. Still, no large solar farms.

I noticed in Washington and Oregon that boat owners had to purchase a permit verifying that their watercraft is invasive species-free. In California, we also went through a fruit and vegetable disease detection station. Turns out it was not occupied and had it been we might have lost eight Pink Lady apples, which would have been tragic since they're my favorites.



What does this have to do with Montford? It shows what dedicated individuals and government can do to better the environment for everyone. It takes asking questions, not being afraid to risk, learning from failed attempts, compromising and not being in it just for ourselves. And more money than 190 countries in the world doesn't hurt.



The Montford Newsletter is published online by the Montford Neighborhood Association, P.O. Box 7181, Asheville, NC 28802, for the residents of Asheville's first historic neighborhood. We welcome articles and advertising by the 20th of the month.

Note: Opinions expressed in this newsletter by contributing authors do not necessarily reflect the official policy or position of the MNA.

Contact Editor Ross Terry at ross@krtdesign.com, 230-7439 for more information.