



MONTFORD

THE NEWSLETTER OF ASHEVILLE'S MOST HISTORIC NEIGHBORHOOD
VOL. 22 NO. 10
OCTOBER/NOVEMBER '17



MARK YOUR CALENDAR and RESERVE YOUR TICKETS



Montford — Asheville's most historic neighborhood — will showcase 10 homes at the **22nd Annual Holiday Tour of Homes on Saturday, December 9 from 1 until 5 p.m.** This is your chance to explore the lovingly restored or carefully constructed eclectic architecture of homes in one of the largest intact historic districts in the state.

New this year — a full-color “Montford Holiday Tour of Homes” **Keepsake Booklet** will be your ticket. It will provide directions to the self-guided tour of homes, photographs and details of the homes, historic information about the neighborhood, and colorful ads of our tour sponsors and advertisers.

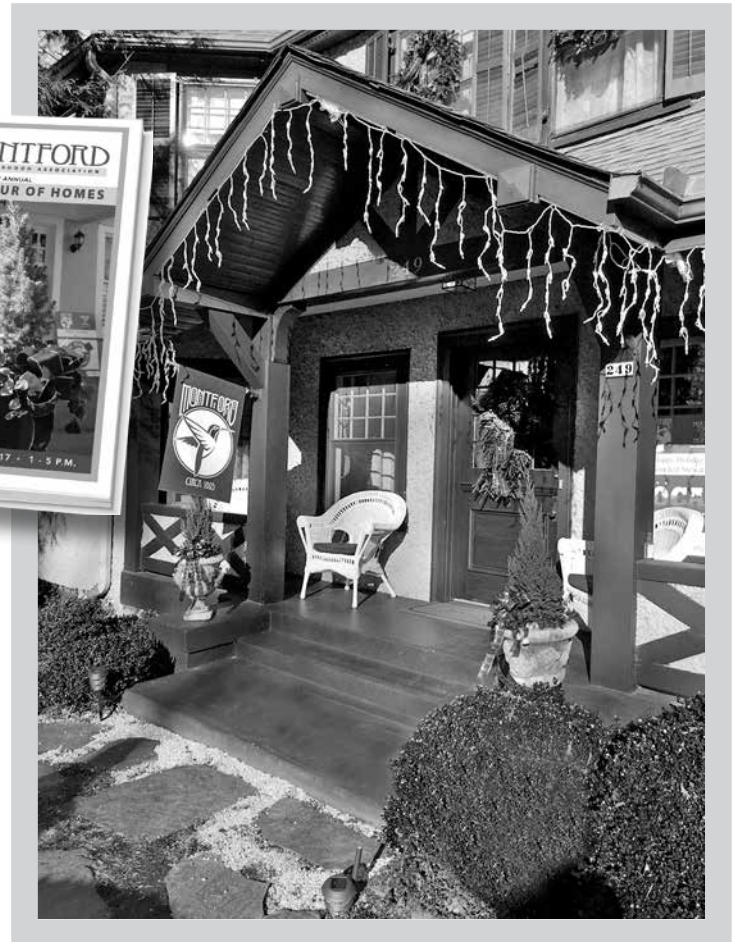
Keepsake Booklet

Profits from the Home Tour support improvements and activities in Montford such as:

- Funds for youth programs at the Montford Recreation Center
- Support for Montford Music and Arts festival each spring
- Provide security for children to enjoy Halloween in the Montford neighborhood
- Beautification projects in the Montford neighborhood

Be a part of this historic neighborhood by supporting us!

For more information please contact Ellen Nutter at 828-505-8242 or elnutter@aol.com.



INSIDE



**Montford Center
Complex Improvements**
- Page 3 -



Details with Map
- Page 4 -



Montford's History Goes Public
October 3rd - Page 8 -



Plan Update
- Page 13 -

COMMUNITY CENTER NEWS

Calendar

Holiday Camp for Youth—December 20-22, 27-29 and January 2 we hold a camp for elementary students from 8:30am to 6:00pm. Only \$40 per child for Asheville residents.

Morning Yoga Classes—Waiting list only right now! To get on the waitlist, contact instructor Kim De at kimde04@gmail.com

Badminton—Join this active group of players on Friday nights 5:30-8:00pm and Sunday Mornings 9 – 11am. If you don't think badminton is a great workout, you haven't played at Montford!

Capoeira— Learn the Afro – Brazilian art which combines martial arts, dance and culture. Saturdays 10am-noon. \$6 per class.

Improvements to Magnolia Park

The Parks and Recreation Department is in the initial stage of planning for improvements to Magnolia Park. Possible improvements may include updating the sandbox, building a play structure for 5-12 year olds, fence art, a canopy, updated lighting fixtures and more. The department will share more information as it becomes available.



For information regarding any of our programs, facility hours or special events, call the Montford Recreation Center at 253-3714 or email skriewall@ashevillenc.gov

Shana Kriewall
Facility Manager, Montford Recreation Center

RITA HAYES
music instruction and performance
classic and jazz music for concerts, galas, receptions, weddings

flute - voice - piano
hammered dulcimer - music theory

828-777-6322
braidstream@gmail.com
www.braidstream.com

Chiesa
food for the soul

Wednesday Spaghetti Nights!

COMMUNITY CENTER NEWS

Montford Center Complex Improvements Phase I

Debbie Ivester, Department of Parks and Recreation, City of Asheville

Back in 2014, Montford neighbors took advantage of a variety of opportunities for feedback on what is now the Montford Center Complex Park Master Plan. This plan recommends improvements in the 17-acre park surrounding the Montford Recreation Center.

In 2016 Asheville voters supported a \$17 million park bond referendum that includes \$1.7 million for the first phase of improvements at the Montford Center Complex. The City of Asheville is now preparing to make the first phase of improvements to the park surrounding the center (please see the graphic).

Construction will begin in spring of 2018 and is expected to be complete in the fall of 2018. Montford neighbors will be invited to the groundbreaking ceremony prior to the start of construction and to the ribbon cutting ceremony upon completion.

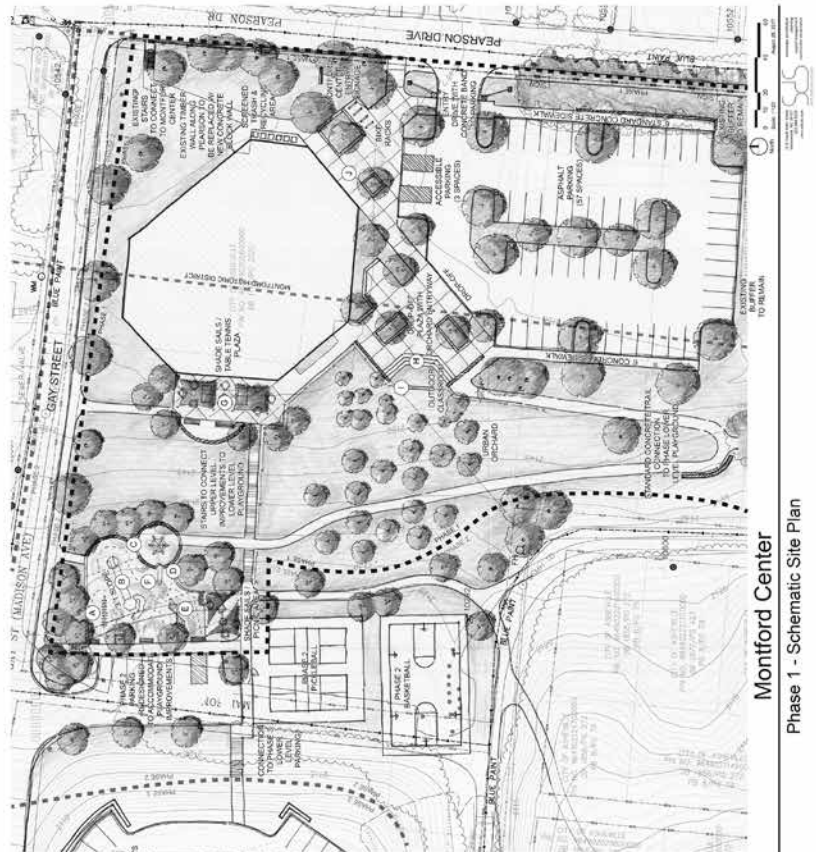
Key features of the Montford Center Complex Improvements Phase I include:

- New playground
- Expanded parking
- New outdoor classroom
- Room to expand existing orchard
- New outdoor table tennis
- New walkways connecting park features.

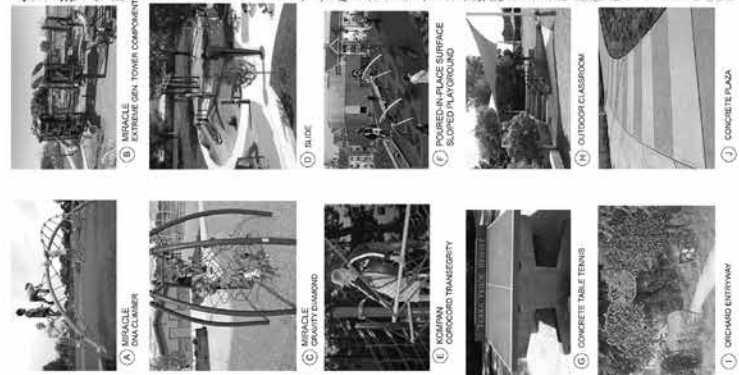
Other improvements to city services in the Montford neighborhood during this time include:

- New tennis courts and basketball court at Montford Park
- New playground at Magnolia Park
- Site plan for Hummingbird Park and Riverside Cemetery.

We invite you to follow the project with the City of Asheville at ashevillenc.gov/bonds. For information about the project, contact Debbie Ivester, Project Lead, 828-259-5804, divester@ashevillenc.gov.



Montford Center Phase 1 - Schematic Site Plan



2017 MONTFORD ARTWALK

open studios October 14 - 12 until 5pm

2017 Montford Studio Stroll

1. Jacque Allen	156 Cumberland Avenue
2. Heather Baird	55 W Chestnut Street
3. Alex Baker	222 Flint Street
4. Marguerite Bove	59 Watauga Street
5. Christa Capua	170 Montford Avenue
6. Nat Dickinson	275 Montford Avenue
7. Carolyn Fehsenfeld	208 Cumberland Avenue
8. Adrienne Gilbert	170 Montford Avenue
Juna Gilbert	
9. Kathy Goodson	32 Elizabeth St.
10. Margaret Goodson Graham	32 Elizabeth St.
11. Toni Graves	28 Melbourne Place
12. Ellen Halperin	139 Montford Avenue
13. Kevin Hogan	273 Pearson Drive
14. Dana Irwin	11 Sylvan Avenue
15. Hannah Jeske	41 Bearden Avenue
16. Susan Loftis	170 Montford Avenue
17. Mary McDermott	315 Pearson Drive
18. Gerard McDermott	315 Pearson Drive
19. Lisa Morphew	197 Cumberland Avenue
20. John Morris	110 Cumberland Avenue
21. Daniel Nevins	110 Cumberland Avenue
22. Chris Sharpe	41 Bearden Avenue
23. Joyce Thornburg	106 Cumberland Avenue
24. Warren Thornburg	106 Cumberland Avenue

The 2017 Montford Artwalk will be held on October 14th from 12 to 5pm!

Mary McDermott

Enjoy an autumn afternoon as you stroll through the historic neighborhood and learn about the many talented individuals who live and work in Montford. There are over 24 artists participating this year.

The Montford Artwalk will feature original art, craft and design including but not limited to painting, fiber art, jewelry, printing, graphic art, photography and woodwork. Don't miss this unique opportunity to meet the artists and see the spaces in which they work.

Maps will be available at the individual studios, the Asheville Visitor Center at 36 Montford Avenue and the Montford Recreation Center at 34 Pearson Drive on the day of the event. The map can also be found on Facebook at www.facebook.com/MontfordArtwalk/.

Head over to the Artwalk for a celebration of Montford's unique energy and positive vibes.



Sol Vida

Therapeutic Massage & Bodywork

Christa & Jason Hebal

Massaging Montford since 2007

17 Zillieoa Street
(828) 337-7903
solvidamassage.com





Wags2Whiskers Pet Sitting

"We're Always Home"

Pet sitting- Overnight and Drop-by Services

Serving North, South, East, West and Downtown Asheville

Meghan Slater (843) 801-0365

Licensed Veterinary Technician/ CPR certified

w2wpetsitting@gmail.com





A Brief Look at the Habitat Monthly Calendar

- Sunday Soul Food Brunch 12-3pm
- Panthers' Games - Sundays 1-4pm games
- Pints w/ Professors - 1st Tuesdays 7-8:30pm
- Common Table Potluck - 4th Mondays 6:30-8:30pm
- Square Dance - 1st Fridays 8-11pm

Habitat Brewing Co opened in November of 2016 and is located on 174 Broadway St at the north end of downtown. Habitat Brewing strives to craft classic and quality ales while also offering a warm and welcoming place to enjoy a beer and genuine conversation. Habitat offers 5 house beers, a rotating list of guest taps, wine, as well as a local kombucha and ginger ale.

The Tavern houses the bar and brew area, while the adjoining Commons room often holds neighborhood events, dances, weddings, workshops, and parties. Ample parking is available out back after 5pm and on the weekends, and we share parking with High Five Coffee before 5pm on the weekdays. Families and pets are welcome!

Keep an eye out for information on our one year anniversary happening November 11, 2017!

Our events calendar is found on Facebook @habittavernandcommons and daily updates on Instagram @habitatbrewing. Commons Room rental and other inquiries can be directed to Jen Addis at habitatbrewing@gmail.com.

JUST A SHORT WALK
 LOCALLY-OWNED GALLERIES, SHOPS, WINE BARS & RESTAURANTS

GROVE ARCADE

Open Daily · One Page Ave · Downtown Asheville · 828.252.7799 · www.grovearcade.com

SMART FELLER TREEWORKS

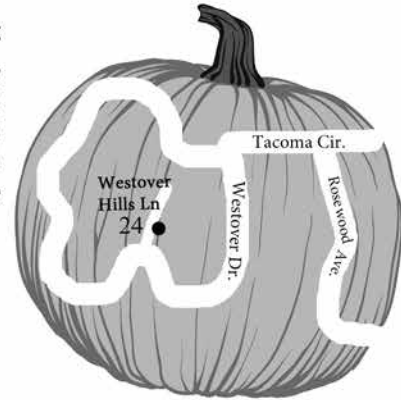
828.545.5503 • smartfellertreeworks.com

Harvest Open House

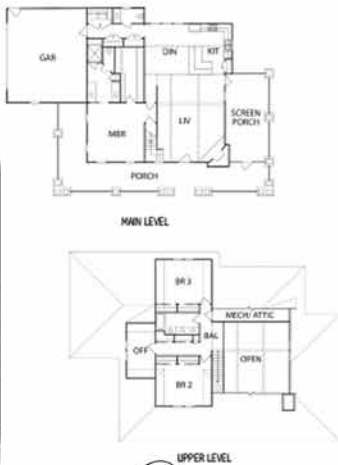
~ Official Entry 2017 AHBA
PARADE OF HOMES™ ~
See Entry No. 32 in
the 2017 printed guide!

OCTOBER 14th - 15th 1PM - 5PM 21st - 22nd 1PM - 5PM at 24 WESTOVER HILLS LANE

During Asheville's 2017 AHBA Parade of Homes, Join Scott McKenzie, Broker | REALTOR® at Carolina Mountain Sales, for a fall-inspired open house at 24 Westover Hills Lane in Montford. This stunning new construction offers a modern twist on a timeless design. Visit this Energy Star, NC Green Built home first-hand, enjoy some refreshments and make yourself at home while we entertain, harvest-style!



APPLE CIDER MUSIC S'MORES
FOOD REFRESHMENTS



Carolina MOUNTAIN SALES
A Wilkinson COMPANY
THE BRIGMAN GROUP

Montford Reflections

Our Asheville Lives Started In Montford

Cathryn Mcleod

My kids and I arrived in Asheville 34 years ago, on a Saturday in September, from Savannah. We came in an old borrowed Chevy Nova. Everything we had was with us in a U-Haul carrier on top and in the trunk. My daughter wasn't walking yet and my two sons were my cute li'l blonde-headed boys. Funny thing, I "knew" what the house looked like before we left Savannah, and the preview turned out to be correct.

For a long time we lived hand to mouth. We had the whole upstairs at 63 Cumberland Avenue for \$150 a month including utilities. I managed on \$300 a month child in support and food stamps for quite a while. That first winter, someone loaned me a wood stove, installing it in one of the bedrooms, and we got a stack of wood from someone else.

Having no TV, we would go to the kids' library at Pack and bring home so many books at a time that the librarian finally asked if I was a teacher. There's nothing wrong with having stacks of books as your only entertainment!

From the back side of the house, upstairs, you could see golden sunset colors reflected on the windows of the Grove Park Inn. There were no screens on the windows. On our first night there, I came into the bathroom where I had left the window open. I thought I would absolutely freeze with my thin August Savannah blood. On the wall behind the sconce, dozens of moths of every sort displayed their beautiful colors and sizes, seemingly for my comfort.

Later in the winter, in the other unheated bathroom, a wet washcloth I had left on the bathtub was stuck, frozen stiff in the morning. I had to knock it off with the side of my fist. The only heat we had in the kitchen was a gas stove. I know you're not supposed to use it for heat, but it's all we had. I covered the doorless kitchen entrance with a blanket. When it was especially cold, frost would form on the insides of the kitchen windows in the shape of ferns. Morning sunlight made them sparkle like a flat spread of tiny diamonds before the stove melted them away.

Thirty-four years have brought a world of changes for all of us. It was pretty difficult to get going in a place where we knew no one, but there were enough kind people willing to help. We made

it through. A couple of days ago I mentioned my age at a small meeting in church. Pastor said, I thought women didn't like to tell their age. I responded, I'm proud to tell my age (it's 62). I made it.

My kids are all grown now, and they've made it, too. I can still see them in that dusty blue Chevy Nova that I eventually parked after several brake pads fell off. We got here alright, and as I write on this similarly cool morning Asheville morning, I'm still grateful to everyone who gave us a hand. On Saturday, September 2, 1983, we started our young lives in Asheville. Living in Montford with kind-hearted neighbors gave us a good beginning.

Resource Directory

Advertise in the Resource Directory

Send a brief description (30 words or less) and contact information. **More than 1,500 newsletters** are distributed monthly throughout the neighborhood and are also available on the **Montford website** and at the Pack Memorial and North Asheville Public Libraries. Call 258-2207 for more information.

Cindy Osborne ~ Nurture. Gentle, intuitive body-work.

- nurturing.massagetherapy.com
- 828-528-2128

Sliding scale available. By appointment only at 263 Haywood, 28801. NC LMBT #16191.

Daoist Traditions College of Chinese Medical Arts

- 382 Montford Avenue • 225-3993 (school)
- 253-8669 (student clinic)
- www.daoisttraditions.edu

Low cost acupuncture care at our student acupuncture clinic. Call for more information.

House Histories

Learn the story of your house. Who lived there, who owned it and what they did for a living.

- For more information call Sharon at 777-1014

Historic Walking Tours

For by-appointment walking tours of historic Montford, Riverside Cemetery, and downtown Asheville, call 777-1014.

Hansen Stiles And Associates

- 117 Cherry St • Asheville, NC 28801 • 255-5227
- Montford Residents Investment Company on Cherry Street—Financial Planning Consultants, Investment Securities

Smart Feller Tree Works

- Ira Friedrichs • 545-5503 (NEW cell) • irafriedrichs@gmail.com
- Down trees got you down? Contact us for all your tree removal and pruning needs! We are locally licensed and insured. Please call for free estimates. Montford references available. Thanks.

Square Peg Construction Inc.

Add beautiful custom woodwork to your historic home: New upgrades like wood paneling, built-in cabinetry, trim, doors, stairs and railings. Small details add big impact! Montford references.

- Call your neighbors, Leslie and David Humphrey 277-5164

Montford's History Goes Public

Join the celebration Tuesday, October 3, 9:30 am on Montford Avenue at Cullowhee Street. Parking is available at the Holy Trinity Greek Orthodox Church, 227 Cumberland Avenue, and refreshments will be served there afterwards.


The historic Montford neighborhood (exit 4C off I-240) is sharing its history with visitors and residents alike through five interpretive panels mounted on bus shelters along Montford Avenue. The first one gives a brief history of the neighborhood and is located in front of the Asheville Chamber Visitor Center. The next four are mounted on two bus shelters at the corners of Montford Avenue and Cullowhee Street. They are a collaboration between the City of Asheville and the Montford Neighborhood Association (MNA), a nonprofit whose mission is to improve the Montford neighborhood.




What better way to honor lost homes, past residents, bygone scenes and African American heritage than displaying four history panels on bus shelters where passersby can glimpse neighborhood history? These displays celebrate the diversity of the neighborhood, its prosperous times and its struggles with poverty, demolition and fires.

Creating a “Montford history museum without walls” was a community building project: MNA Board member Sue Russell spearheaded the idea; Michael McDonough designed the structures; the Historic Resources Commission of Asheville and Buncombe approved the design; Tina Council fabricated the metal; Ross Terry created the panels’ graphics; and Sharon Fahrer gathered the information and wrote the content. The City Department of Transportation laid the groundwork and approved the installation of the panels on the bus shelters. Photographs were provided by Pack Library’s North Carolina Room and the D.H. Ramsey Library Special Collections at UNC Asheville. Additional input and information came from community members Daphne Young, Lenora Robinson and Roy Harris, among others.

“The larger hope is that other neighborhoods will copy this idea and showcase their own history, including an archive in Pack Library’s North Carolina Collection,” says Fahrer. “Everyone can be involved in gathering pictures and stories.”



WNC Tai Chi for Arthritis



Tai Chi Deepens the Mind-Body Connection
Improves Health
Bring a Friend. Join our next 10 week series of
Tai Chi for Health Classes
Discounts with MD or PT referral
19 Zillicoa St. - Homewood Event Center
Get details and visit our website to register
www.wnctaichiarthritis.com



“ Do not let Margot's youthful appearance fool you! She is a true professional who is with you every step of the way. She's a great listener and really takes your preferences to heart. Our experience with her was top notch and we will refer others to her without reservation. ”
-Michele



MARGOT SUTTON
Residential Broker Associate
908-500-8235
margotsutton@beverly-hanks.com

Beverly-Hanks & ASSOCIATES, REALTORS®
LEADING REAL ESTATE COMPANIES OF THE WORLD

beverly-hanks.com



The Mike Miller Team
(828) 712-9052
millerteam@townandmountain.com
www.themikemillerteam.com



"Mike is not about selling or pushing - he is all about earning trust & developing a relationship. He respected my thoughts during the negotiating process & represented us well. As a lifelong Asheville resident Mike had excellent recommendations on folks to help out with inspections, survey, closing attorneys & more (including restaurants & music venues). His team at Town and Mountain Realty is professional and friendly. Going to their office is a cross between visiting a real estate office & visiting someone's home. You cannot go wrong working with Mike Miller!" - Don K.



www.townandmountain.com



THE OLD TOWN SALVAGE CO.

Salvaged doors, windows, mantles and unique reclaimed items

BUY · SELL · TRADE
828-216-7175

Visit us at
Antique Tobacco Barn
75 Swannanoa River Rd
Asheville, NC 28805

Autumn Beer Dinner

Thursday, October 19th • 6-8 p.m.

Featuring

Hi-Wire Brewing, Hickory Nut Gap,
Spinning Spider & more local favorites

Tickets \$35

Discounted tickets for Downtown Association Members
& Montford residents can be purchased at www.eventbrite.com



Renaming the Community Center for Tempie Avery

Joe Newman

The proposal to rename the Montford Community Center in honor of Tempie Avery is moving ahead. Tempie was a freed slave, a woman of remarkable achievement, whose home stood on the site now occupied by the center.

What Has Been Accomplished So Far

The proposal was initiated by Martha Warren, Tempie's gr-gr-gr-granddaughter, and carried forward by Cathryn McLeod. It has won

the support of the African American Heritage Commission, the Historic Resources Commission (HRC), the Montford Neighborhood Association and its Executive Board, and the more than 200 citizens who signed a petition to rename the center. Having gained the approval of the Advisory Board of the City of Asheville Parks and Recreation Department, the proposal is now ready to go before City Council.

Tempie Avery's Life and Significance Today

Based on historical research conducted by Martha Warren, Cathryn McLeod, and others, we know that Tempie was born circa 1826 and came to Asheville as an enslaved girl in 1840. She served the

Nicholas Woodfin family as a nurse and midwife until the Civil War ended in 1865 and for several years after emancipation, learning skills she would use to make her living as a free woman.

In 1868, Nicholas Woodfin gave Tempie one acre of land where the Montford Community Center now stands, land that was then on the northwestern fringe of Asheville. Tempie made her home there for almost 50 years, leaving the land to several descendants when she died in 1917. From her little home at what became the intersection of Pearson Drive and West Chestnut Street, Tempie could watch Montford developing as a neighborhood. Even earlier, she was able to look out at the wooded land behind her home and see the African American community of Stumptown coming to life.

Tempie's services as a midwife and nurse were in demand throughout Asheville. Over the course of her life, she delivered hundreds of babies, black and white. She became so popular that when she grew ill and eventually passed away, tributes and memorials were published in the *Asheville Citizen*. Tempie's love for children of both races and her devotion to their well-being were the hallmarks of her life and her legacy to us.

Her life as a free woman was not easy. Tempie had to work hard to support herself, her husband, and her children, sometimes





Starks Financial Group
Simplifying Retirement
 An Independent Firm

We look and feel like a small, independent, personalized financial planning & investment management company, because we are. Yet, we have the backing of a leading international financial firm offering us research, support and client service that has been recognized industry wide.

Starks Financial Group offers a caring, professional approach to your finances.

- Asset management from a financial planning perspective
- Team-based, high level of personal service

Our relationship starts with you and a financial plan, which builds into an investment plan to help meet your retirement goals and dreams. For a free, no obligation initial consultation, contact us.

440 Montford Avenue | Asheville NC, 28801
 828-285-8777 | 877-285-7537
www.starksfinancial.com

as the sole bread-winner of her family. In addition to serving as a nurse and midwife, she found it necessary to take in laundry to make ends meet.

Today we can view her life as a symbol of the struggle for survival of the many African Americans who lived in Asheville from Reconstruction through the early 1900s, years that were marked by the legal restoration of white supremacy.

What Remains to be Done

Many citizens who signed the petition to rename the community center commented that given the deep cultural and political divides in our nation today, it seems timely to rename the center for this extraordinary woman. With the advice of the Parks and Recreation Advisory Board, we will ask Asheville City Council to rename the center the Tempie Avery Montford Community Center. We encourage supporters of the proposal to attend the City Council meeting on **Tuesday, October 3, 2017, at 5:00 p.m. in the**

Council Chamber on the Second Floor of City Hall.

October 3 will be a big day. Tempie is honored on one of the historical panels recently installed on the bus shelters at the intersection of Montford Avenue and Cullowhee Street. The dedication of the panels will take place at the intersection on Tuesday, October 3, at 9:30 a.m. (See the article in the August/September 2017 Montford Newsletter, p 5.)



Tempie Avery (1823-1917) holding baby Pauline Moore. Photo courtesy of Special Collections, The North Carolina Room, Pack Memorial Library.

Read More about Tempie Avery

From Zoe Rhine: packlibraryncroom.wordpress.com/2013/08/30/tempy-avery-1823-1917/

From Cathryn McLeod and Martha Warren: montford.org/index.php/group-petitions-to-rename-the-montford-community-center/

From Rob Neufeld: www.citizen-times.com/story/news/local/2017/09/17/visiting-our-past-getting-know-freed-slaves-asheville/672081001/



"It takes truly exceptional service for me to write a referral...and this is how I describe my recent experience with Amy Giles as our Realtor...exceptionally good service. We were looking for a Realtor who understood our Montford neighborhood, the unique value of our historic home, and was able to clearly communicate a detailed marketing strategy. Amy (a long-term Montford homeowner, a WNC native, and experienced Asheville Realtor) used an evidence-based approach to help us establish a listing price and collaborate on an effective marketing strategy. We received a full price offer the first week our house was available to show. It was painful enough to leave Montford...but at least the experience of selling our house was painless. Throughout the entire process, from the first interview to closing, Amy was on top of every detail. A truly exceptional experience." - Paul Zmick

LIVE WHERE YOU LOVE

Nest Realty | 394 Merrimon Ave, Suite A | Asheville, NC 28801

How to Contact the Asheville Police Department



- For emergencies, call 911.
- For nonemergencies and to report suspicious activity, call 252-1110.
- For the Crime Prevention Division, call 259-5834.
- For Police Dispatch, call 259-5888.
- For Montford's Community Resource Officer Justin Wilson call 828-450-3719



We all need love to thrive, but we have not understood how love works. These workshops offer a road map for your most important relationship. Work with your partner (speaking in the group is not necessary) to identify and stop painful patterns. Learn to build trust and security. Move together into a lifetime of deepening love.

The weekend workshop for couples helps you

- See clearly the communication loops that sabotage your love
- Change the way you handle moments of hurt and disconnection
- Find a safe haven and a secure base in your loved one's arms.

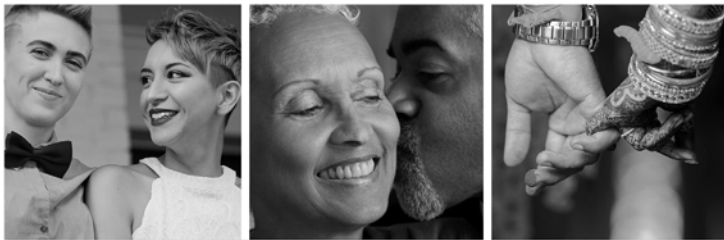
Hold Me Tight

ASHEVILLE

Weekend Workshops for Couples

LGBT Couples Nov. 4 - 5
 Sat: 10:00 am - 6:00 pm & Sun: 9:00 am - 5:00 pm
 \$695 per couple • \$650 early bird rate (through Oct. 6)

All Couples Nov. 11 - 12
 Sat: 10:00 am - 6:00 pm & Sun: 9:00 am - 5:00 pm
 \$695 per couple • \$650 early bird rate (through Oct. 13)
 13 CEU's available for nurses and therapists



*Facilitated by Elli Schmeltekopf, LPC, SEP, and David Bate, MD, SEP
 Hold Me Tight® is a registered trademark of Dr. Sue Johnson*

To register or for more information, visit HoldMeTightAsheville.com.

Olli Art Bazaar, Nov. 10-11, 2017



Mark your Calendar to attend the Osher Lifelong Learning Institute (OLLI) Art Bazaar, Friday November 10, 11am - 4pm. & Saturday November 11, 11am - 3pm at the Reuter Center on the campus of UNC Asheville.

You will discover a delightful selection of paintings, fiber arts, photography, jewelry, scarves, mixed media pieces, handcrafted soaps & lotions, cards and paper art, pottery, wood art and so much more!

For directions: <http://olliasheville.com/directions>

Hummingbird Park Project is Taking Flight!

By Zoe Schumaker, Friends of Hummingbird Park

First and foremost, a big thanks to all who participated in our **Community Survey!** The results were very positive and will help us establish priorities going forward. A special thanks to the many who have volunteered time, skills, or financial support. We will be in touch as opportunities to help arise.

The survey results are on montford.org.

The Current Buzz

The agreement between the City and the Montford Neighborhood Association is nearing completion. The City has expedited a few of items ahead of the formal agreement:

- The City Parks and Recreation Department is working with Public Works department to repair the collapsed drain in the northeast corner of the park. Some heavy equipment is being used to diagnose and solve the problem, so don't be alarmed if you see some digging!
- The Parks Department has done a comprehensive cleanup of the wooded strip on the east border of the park. The City has offered their ongoing support in keeping this area more manageable until a landscaping plan is developed.
- The City will be installing a standard park sign. Although we had previously hoped to create a more attractive custom sign, our initial cost estimate was prohibitive. Since the City sign was ready to go, we decided to install it, and consider other custom signage opportunities after we have a landscape plan.

- The dog waste station (#1 requested item per the survey) has been placed in the City work queue to be installed.


There is one significant (very positive!) policy change since our project was introduced in the last newsletter. We previously planned to raise funds for landscaping, but the City has now agreed to provide all landscaping materials in exchange for our commitment to maintain new plantings. Although we will still require some funds to cover insurance and other special items, our primary neighborhood contribution will be volunteer labor and other maintenance costs.

Flight Path (Next Steps)

After the Agreement has been approved by the MNA Board and City Management, the City will develop a Site Plan for Hummingbird Park. The Site Plan will assess the condition of the park and opportunities to improve the safety and usability of the park. The Site Plan will also determine the priority and timing of the City's investments. This includes items currently on our enhancements list and also other potential improvements such as fixing the stone wall along Cumberland Avenue.

Concurrently, we—The Friends of Hummingbird Park—can begin working with the City Parks Department on a landscaping plan for the wooded strip on the east border of the park. This is where the neighborhood will be contributing volunteer labor for installing and maintaining landscape improvements. We hope to begin planting next spring.

Though we still have a distance to go, the project is definitely "humming along"! If you have any questions or comments, please don't hesitate to send them to:
zoe_schumaker@yahoo.com.




Better Than a Gulp of Whiskey—Anne Penland, World War I Nurse and Anesthetist

by Joan Miller

“At last the great day has arrived,” Asheville native Anne Penland wrote in her journal on May 14, 1917. After “much excitement and many shopping expeditions” in New York, she and 64 other nurses were boarding the ship *St. Louis*, bound for England and World War I.



Photo Courtesy of Imperial War Museum

In a couple of weeks, she'd be working at American Presbyterian Base Hospital 2 in Étretat, Normandy, as an anesthetist.

Anne (pronounced like Annie with a long *e*) was 32. Eight years earlier, she'd left Asheville to attend The School of Nursing of the Presbyterian Hospital, New York, becoming its first graduate in 1912. Nursing was one the few avenues for women who wanted careers and accomplishments. Bridge parties were not enough for her.

When Anne and her sister Margaret announced they were leaving to attend nursing school, their father, William Henry Penland, disdained their choice, saying “all nurses did was change bedpans,” according to a Dr. Decker.

The girls' mom, Mary Blair Penland, according to available genealogies, had been the granddaughter of a U.S. congressman, John Blair of Jonesboro, Tennessee. She had taken on the role of raising a family and raising family values. She drove her three daughters on car trips into the countryside. She won bridge tournaments and hosted frequent teas.

Her daughters excelled. As a child in Asheville, Anne won a writing contest at the Orange Street School. In her early 20s, the *Asheville Citizen* reported, Anne performed in a violin recital and finished as top scorer in a Bridge Club meet.

In London, Anne, the nurses and officers had three days of grand touring and were received by Lady Randolph Churchill at the American Embassy. Arriving in Étretat on May 31, they were greeted by a brass band playing John Philip Sousa's “Stars and Stripes Forever.”

Convoys began to arrive with casualties. Anne wrote about a

patient whose hand couldn't be saved and another whose leg was amputated mid-thigh. “The poor boy has been getting worse, so the leg had to go.”

On June 18, she'd gotten the news that she'd be going, with a small team, to a casualty clearing operation near the Belgian village of Poperinge. “Maj. Darrach will head our team and Miss McDonald will go as instrument nurse,” Anne noted. “Thank goodness I am in on this deal, and go as anesthetist.”

During the war, people kept diaries. The following entry was from an anonymous writer, collected under the title “Mademoiselle Miss” in *Letters from an American Girl Serving with the Rank of Lieutenant in a French Army Hospital at the Front*, W.A. Butterfield, Fifth Edition (1916).

“I tell you that here on the front it isn't just a mere nurse that is required; send the finest, most versatile woman that America or any other country can produce, and her fineness and her gifts will not be wasted.

To be ideally adapted to the post she should combine a glacial calm with the unfailing gayety of springtime, and a sense of humor always; she should possess law and order and arrangement, the powers of construction and invention, a touch as light as a watchmaker's, and strength to carry a man alone on occasion; she should combine tremendous initiative with excessive caution, firmness with tenderness, authority with courtesy, fearlessness with awe, and she ought to be a psychologist, and deeply learned in the profession, and ready to read the riot act when called for.”

Dr. William Darrach had been a doctor at Presbyterian Hospital, working with Penland, and would continue to do so after the war, becoming dean of the Columbia University School of Medicine.

It wasn't until Aug. 15 that the British commanding officer, the colonel in charge, gave his blessing to Anne as Darrach's anesthetist.

When, back at the Étretat base, a British medical officer had questioned Penland's ability to hold down writhing patients for anesthesia, Dr. Darrach had pointed the officer to Anne leaning over an agonized soldier and murmuring, “There, dear, it won't hurt you a bit — there, there.”

“At the sound of her low, distinctly feminine, southern voice,” as Mary Sarnecky retold it in “A History of the U.S. Army Nurse Corps,” “the Tommy looked up in surprise, then grinned with perfect confidence and ‘went under’ without a struggle. So successful was



Historic Resources Commission of Asheville and Buncombe County

Montford Action Agenda, August 9, 2017

Members present: Staff present: Alex Cole, Jannice Ashley

Item, Summary and Action

90 Montford Avenue—Installation of new flush-mounted sign and replacement of panels on existing free-standing sign.....**Action:** Approved

Please refer to the website (www.ashevillenc.gov) for the full approved minutes after the following month's meeting.



Historic Resources Commission of Asheville and Buncombe County

Montford Action Agenda, Sept 13, 2017

Members present: Staff present: Stacy Merten, Alex Cole, Jannice Ashley

Item, Summary and Action

42 Cumberland Avenue—After the fact approval for widening a driveway previously approved to be 9' wide to 20' wide, reconfiguring front walkway, and installation of post and wire fence in rear yard; change of material of driveway from gravel to chip and seal; change of material of proposed front walkway from stone to concrete.....**Action:** Approved with conditions

49 Zillicoa Street—Replacement of four windows on side elevation with French doors and two windows; replacement of three windows on rear elevation with French doors and two windows; construction of new porte-cochere at side elevation with new entry stair and door.....**Action:** continued

99 Cherry Street—Construction of two new one-story, 714 sq. ft. houses**Action:** continued

Please refer to the website (www.ashevillenc.gov) for the full approved minutes after the following month's meeting.

her work that the British decided to train their own nurses for this service and thus relieve several hundred doctors for medical and surgical work.”

Anne introduced a moderate anesthetic that lasted only 15 minutes, for incisions. She trained British and Australian nurses. She worked through bombardments and heavy rain, treating soldiers shot and torn coming out of the trenches and crossing barbed wire at the Battle of Passchendaele.



She returned to Columbia Presbyterian, eventually becoming head of anesthesia, a post she held until her retirement in 1952.

On a Saturday afternoon, September 16, outside Pack Memorial Library (site of Anne's childhood

home), a new NC Highway Historical marker was placed recognizing Anne Penland, “the first nurse anesthetist to serve on the British front line” (a nurses’ history states).

Thank you to Zoe Rhine and the other librarians of the North Carolina Room, Pack Memorial Library, for their research behind much of this article. And to Jessica Bandel, “Penland, Anne,” Ncpedia, 2016, www.ncpedia.org/penland-anne. Also to Rob Neufeld, from his September 10, 2017 “Visiting Our Past” column, courtesy of Asheville Citizen-Times.



Paul Dixon
828.215.7772

PDIXON77@YAHOO.COM

COMMERCIAL ■ RESIDENTIAL ■ INTERIORS
EXTERIORS ■ LICENSED

PLEASE SUPPORT OUR ADVERTISERS—They make the newsletter POSSIBLE!

Montford is published bimonthly by the Montford Neighborhood Association, P.O. Box 7181, Asheville, NC 28802 for the residents of Asheville's first historic neighborhood. The newsletter is distributed by more than 50 volunteers.
Staff: Editor/Layout and Design/Advertising Manager—Ross Terry, ross@krtdesign.com, 230-7439.
Copy Editor/Editor at Large—Joan Miller, joanadrienne@gmail.com, 650-966-1957.
Circulation Manager—William Saupe, aws@anchorlaw.com, 907-952-1809.
We welcome articles and advertising emailed by the 20th of the month to Ross Terry.
Thanks to Jim Parker for distribution help.

LAURIE REESE
 BROKER ASSOCIATE

828.215.4349
 lreese@beverly-hanks.com
 beverly-hanks.com





505-3121
 233 Montford Ave
 Open 7 days/week
 11:30am to 10:00pm
 ninemileasheville.com



mantis gardens
 creating beautiful, sustainable environments

landscape design,
 installation and maintenance

E.V. vonSeldeneck
 mantisgardens.com

828.582.0016
 ev@mantisgardens.com



**LOCALLY OWNED
 COMMUNITY MINDED**



ALLEGRA
 PRINT & IMAGING.

253-6886 ♦ 191 CHARLOTTE STREET ♦ WWW.ALLEGRAASHEVILLE.COM

frugalframer
 custom picture framing since 1975

95 Cherry Street North, Asheville
 Open Monday - Saturday 9:30-5:30
 828.258.2435

Visit us online at www.frugalframer.com & follow us on facebook

Hurricane Irma's Montford Touchdown

By Joan Miller

Some of us were more prepared than others for Hurricane Irma's visit. About a half second after I heard the transformer blow on Houston Street, I thought, I wonder where the nearest



Photo Credit: Joan Miller

flashlight is, and I wonder where the nearest batteries are for the nearest flashlight? Yep, pretty lame response from someone who has prepared for disasters on and off her whole life. One forgets when in paradise.



Photo Credit: Cherie Morris