



# MONTFORD

THE NEWSLETTER OF ASHEVILLE'S MOST HISTORIC NEIGHBORHOOD  
Vol. 25 No. 8  
AUGUST '20

## THANK YOU CONTRIBUTORS!

It has been a while since the Montford Neighborhood Association (MNA) has acknowledged the writers, photographers, and businesses that the Newsletter relies on. This list covers the years 2018, 2019, and the first half of 2020. Please let us know if we missed anyone.

### Writers and Photographers

- |                    |                    |
|--------------------|--------------------|
| Sybil H. Argintar  | Joe Newman         |
| Jim Biard          | Ellen Nutter       |
| Jane Bramham       | Randy Omark        |
| Judy Butler        | James Parker       |
| Charlotte Caplan   | Terry Peters       |
| Gene Carter        | Lynn Raker         |
| Mark Combs         | Zoe Rhine          |
| Jerry Conner       | Lisa Riggsbee      |
| John Coutlakis     | Pam Robbins        |
| Katherine Calhoun  | Susan Roderick     |
| Cutshall           | Dan Rogers         |
| Katie Devoe        | Bob Rose           |
| Bill Eakins        | Lewis Rothlein     |
| Suzanne Escovitz   | John Russell       |
| Sharon Fahrner     | Mitch Russell      |
| James Funk         | Ben Scales         |
| Trudy Galynger     | Zoe Schumaker      |
| Elizabeth Gerson   | Tom Siekman        |
| Bonnie Gilbert     | Jeanette Syprzak   |
| Ron Greenberg      | Trudy Terry        |
| Randy Hall         | Ross Terry         |
| Roger Helm         | Jack Thomson       |
| Kevin and Jo Hogan | Marc Voorhees      |
| Gary Holstein      | Tina Madison White |
| Leslie Humphrey    | WLOS               |
| Shana Kriewall     | Alida Woods        |
| Sherree Lucas      | Ann Wright         |
| Nancy Lydon        | Jane Yokoyama      |
| Greg Mayer         |                    |
| Michael McDonough  |                    |
| Lisa Morphew       |                    |
| Cherie Morris      |                    |

### Advertisers

- |                                   |                                   |
|-----------------------------------|-----------------------------------|
| Amy Giles                         | Margot Sutton                     |
| Archetype Brewing Company         | Mike Miller                       |
| ASAP Farm Tour                    | Millie Farmer                     |
| Asheville Dinner Delivery         | Montford Art Walk                 |
| Asheville Rentals                 | Montford Convenience Store        |
| Bionic Man                        | Montford Deli                     |
| Cate Scales                       | NANC                              |
| CSA Fair                          | Neumann Nutrition & Wellness      |
| Downtown Books and News           | Nine Mile                         |
| Eating with the Johnsons          | Old Town Salvage                  |
| Grizzly Bear Arbor Care           | OLLI Art Bazaar                   |
| Grove Park Tour of Homes          | One Click Fix                     |
| Habitat Tavern                    | Rita Hayes                        |
| Historic Walking tours            | Rose's Garden Shop                |
| House Histories                   | Smart Feller                      |
| James Mullis                      | Southeaster Preservation Services |
| Jay Lurie                         | Square Peg                        |
| JCC                               | Starks Financial Group            |
| Laurie Resse                      | The Broadway                      |
| Local Broker                      | The Dogwood Doctor                |
| Logan Restoration and Contracting | Wages2Whiskers                    |
|                                   | Whole Foods                       |

### INSIDE

- |                     |                         |                       |
|---------------------|-------------------------|-----------------------|
| Cancelations-2      | Montford Park Players-6 | A Father's Tale-12    |
| Voter Information-4 | HRC Action Agenda-10    | Green Corner-14       |
| Welcome Packet-5    | Chipmunk Love-11        | Resource Directory-14 |



## TEMPIE AVERY MONTFORD CENTER

Our center will remain closed until further notice and all center programming is canceled for the month.

Shana Kriewall, Facility Manager, Tempie Avery Montford Center  
253-3714, [skriewall@ashevillenc.gov](mailto:skriewall@ashevillenc.gov)



## Cancelations etc.

### **The Montford Music & Arts Festival - Postponed**

The Festival Committee is working to determine the safest way to proceed with a version of the Festival. Stay tuned!

### **The Holiday Tour of Homes - Canceled**

Most of you have heard this—the Tour committee has decided to cancel the December 2020 Tour due to the pandemic.

### **Montford Park Players - Season Canceled**

As part of this decision, the board voted to move the previously scheduled 2020 shows to the 2021 season. [Details on page 6.](#)

### **Hot August Night - Canceled**

Sadly, we have also decided to cancel the annual Hot August Night 5K this year.

### **Halloween at Tempie Avery Montford Center - Possible Alternatives**

Tempie Avery Montford Center is looking at alternatives. Outdoor activities may be possible.

Supporting financial literacy in our community for 21 years.



[starksfinancial.com](http://starksfinancial.com) | 828.285.8777 | 877.285.RJFS (7537)  
440 Montford Avenue, Asheville, NC 28801

Starks Financial Group is not a registered broker/dealer and is independent of Raymond James Financial Services. Securities offered through Raymond James Financial Services, Inc., Member FINRA/SIPC. Investment advisory services offered through Raymond James Financial Services Advisors, Inc.



STARKS  
FINANCIAL  
GROUP

PLANNING WITH HEART. INVESTING WITH PURPOSE.



**828.712.2400**

**GrizzlybearArborcare.com**

**GRIZZLYBEAR  
ARBORCARE**

*tough love for trees*

## Voter Information

Here's some nonpartisan information from the Montford Precinct Democratic Party to address two questions Montford Residents might have about voting in the November general election:

1. How does one register to vote or update their voter registration information?
2. Who can vote by mail in the General Election and how does that process work?

### Voter Registration

Any Montford precinct resident may register to vote in this precinct provided they are:

1. A U.S. citizen;
2. 18 years of age or will be 18 years of age on November 3, the date of the General Election;
3. Have resided in the Montford precinct for at least 30 days prior to the election; and
4. Are not serving a prison sentence resulting from conviction of a felony, and if previously convicted of a felony have completed that sentence, including probation or parole periods.

The regular voter registration deadline for the November 3, 2020 general election is 5 p.m. on October 9, 2020, 25 days before the election. Eligible individuals who miss the registration deadline may still register and vote at the same time during the one-stop early voting period from October 15 to October 31. Voter registration forms and instructions for filling out those forms and submitting them can be printed out from the Buncombe County Division of Election Services website. Here's a link to that form: <https://buncombedems.org>. This form may be used to update a registered voter's information as well as to register a new Buncombe County voter.

### Voting By Mail

Montford voters of all political persuasions have legitimate reasons to be concerned about the impact of the Corona Virus on voting at our designated polling place (Montford



North Star Academy) on November 3, or during the early voting period from October 15 to October 31. We urge all voters to consider exercising the option of voting by mail during this election cycle. While a mailed ballot is often referred to as an “absentee ballot”, North Carolina

is one of the states that permits all voters to vote by mail—there is no requirement that a registered N.C. voter be absent from their home or unable to vote in person due to reasons such as illness or other infirmity.

The Buncombe County Democratic Party Website contains comprehensive and nonpartisan information about the process of voting by mail in the General Election. Here's a link to our portion of our website that contains this information: <https://buncombedems.org/>

We'd like to reiterate that requesting and receiving a mail-in ballot DOES NOT require a voter to vote by mail. It's permissible to receive an absentee ballot and still opt to vote in person instead. But given the uncertain status of the Covid virus, it is a great back up to have the option of voting by mail if it seems that voting in person might be unsafe as the November 3 election date (or the October early voting period) approaches.

### About Us

Buncombe County is divided into 80 voting precincts. Precincts are the foundation of the Democratic party and the Buncombe County Democratic Party has an organized presence in almost all of those 80 precincts. Over half of the registered voters in the Montford Precinct are registered Democrats. Based on current Buncombe County Board of Elections Services data on registered voters, the breakdown by party for Montford Precinct registered voters is:

1. Democratic Party- 1,966 registered voters
2. Unaffiliated - 1,300 registered voters
3. Republican Party- 155 registered voters
4. Libertarian Party- 4 registered voters

- 5. Green Party-3 registered voters
- 6. Constitution Party- 2 registered voters

Each organized precinct has a Democratic Party Executive Committee consisting of an elected Chair, Vice-Chair, Secretary-Treasurer, and at least two other registered Democrats. The Montford Precinct Executive Committee consists of Jim Parker, Chair; Kaola Smallwood, Vice-Chair; Alida Woods, Secretary-Treasurer; Karon Harrold, Executive Committee Member; LaFredia Morris, Executive Committee Member; Crystal Reid, Executive Committee Member, and Mary White, Executive Committee Member.

In the next edition of the Montford Newsletter we intend to provide a list of all the races Montford Precinct voters can vote in and all the candidates running in those races.

Please contact Jim Parker at parkeryokoyama@gmail.com if you have questions about any of the information contained in this article.

**NEWSLETTER AD RATES**

Contact Ross Terry at ross@krtdesign.com or call 230-7439 to place an ad.

SIZE	RATE/ISSUE
Resource Directory	\$15
Business Card	\$35
1/4 Page	\$60
1/2 Page	\$100
Full Page	\$200

*Forever Montford*

**WELCOME PACKET**

**Randy Hall**

Forever Montford, a committee of the Montford Neighborhood Association (MNA) has created a Welcome Packet for new Montford residents. The packet contains information such as a brief history of Montford, a list of MNA board members along with contact information, Montford listserv, Montford newsletter, neighborhood parks, events (due to ongoing COVID-19 concerns, be sure to confirm event dates/times), restaurants, maps, volunteer opportunities and much more. Packets are being delivered by MNA board and Forever Montford committee members upon learning of new residents. Recipients of the Welcome Packet have shown great appreciation with one neighboring writing, “Looks like we lucked out in the neighbor and neighborhood department! I appreciate the history and local information. Well done, and thank you for your thoughtfulness.”



If you are new to Montford or know of a new resident, please contact one of the below, and we will coordinate delivery of a Welcome Packet.

Randy Hall: [cpabanker@yahoo.com](mailto:cpabanker@yahoo.com)

Leslie Humphrey: [leslie@squarepeginc.net](mailto:leslie@squarepeginc.net)

Sherree Lucas: [sherree.l.lucas@gmail.com](mailto:sherree.l.lucas@gmail.com)

Lynn Raker: [lynn.raker@gmail.com](mailto:lynn.raker@gmail.com)



# MONTFORD PARK PLAYERS

## Dear friends and neighbors of Montford Park Players,

Last week, the board of directors voted, reluctantly, to cancel the remainder of the 2020 season, due to uncertainty surrounding the COVID-19 pandemic, and its effect on the possibility of being able to reopen.

We certainly regret this, but decided to do so in the interest of the safety of all, most particularly you, our audience, and our production staff and casts.

As part of this decision, the board voted to move the previously scheduled 2020 shows to the 2021 season.

However, we are planning a virtual season for you, to be performed periodically throughout the year. So follow us on Facebook (<https://www.facebook.com/MontfordParkPlayers>), subscribe to our YouTube channel (<https://www.youtube.com/channel/UCaNBWuxzgiAHvB0fMtfwGew>), and check our website (<https://www.montfordparkplayers.org/>) for more details. As soon as Phase 3 is announced, we'll be opening the amphitheatre to other organizations for special programming.

As a result of the live performance limitations we have lost the ability to generate seasonal revenue that sustains the organization.

The entire arts community has been particularly hard hit because we haven't been able to perform live shows for you. You can help by making a donation online at [www.montfordparkplayers.org/donate](http://www.montfordparkplayers.org/donate),

[montfordparkplayers.org/donate](http://www.montfordparkplayers.org/donate), or by mailing a check to us at:

PO Box 2663  
Asheville NC 28802-2663

We appreciate anything you can do, and for those who have already stepped up, a hearty shout out and a grateful thank you for all you do to support live outdoor theatre in Asheville.

Sincerely,  
Jessica Frantz, Board Chair  
John Russell, Executive Director

**SMART  
FELLER  
TREETWORKS**

MEMBER ISA BEST OF MOUNTAIN STATE WINNER MEMBER TCIA (Tree Care Industry Association) Living Wage CERTIFIED Just economic.

828.545.5503 • [smartfellertreeworks.com](http://smartfellertreeworks.com)

**SQUARE PEG**  
**We're Different**



**828-277-5164**  
 FINISH CARPENTRY  
 CABINETS  
 DESIGN  
 □  
 Asheville

**Join the Montford listserv.**

The Montford listserv is a neighborhood discussion list. This is a place where you can exchange news about the neighborhood.

Visit [Montford.org](http://Montford.org) to learn more.

**67 Furman Avenue**




**JUST LISTED! \$585,000**

This large 2230 Sq Ft home has 3 bedrooms and 2 & 1/2 baths. It is one-story with off-street parking and easy wheelchair access in the rear.

This lovely home has been fully renovated featuring new sheetrock, insulation, HVAC, roof, windows, flooring, electrical, and plumbing.

The open floor plan features nine-foot ceilings, custom kitchen with stainless steel and solid surface countertops, and new custom tile bathrooms. Close to everything, it is just blocks from Downtown, Harris Teeter, Trader Joes, restaurants, a bakery, a butcher, and coffee shops.

**Shown by appointment only!**



**James Mullis**  
 Broker | Realtor®  
 828-338-8585  
 Over 15 years experience  
 Licensed in NC and SC

**kw** PROFESSIONALS  
 KELLERWILLIAMS REALTY

**Downtown Books & News**  
 Located in Downtown Asheville  
 67 North Lexington Avenue  
 828 253 8654  
 www.dbnbooks.com  
 dbnbookstore@gmail.com



Now open  
 everyday  
 11 to 4



**Paul Dixon**  
 828.215.7772

PDIXON77@YAHOO.COM

COMMERCIAL ■ RESIDENTIAL ■ INTERIORS  
 EXTERIORS ■ LICENSED

**PLEASE SUPPORT OUR ADVERTISERS**

**They make the newsletter POSSIBLE!**

# The BROADWAY

≡ ASHEVILLE'S INSPIRED BROWNSTONE LIVING ≡



## Introducing, Your Classic Urban Lifestyle.

Inspired by New York's beloved brownstone living, The Broadway of Asheville's townhomes boast more than 3,000+ square feet of luxury living. Every floor plan offers you the space and freedom to work, entertain, or simply relax—all located in one of Asheville's most historic communities, Montford.

**Homes Priced From \$895,000**



## Unparalleled Amenities.

- Private Rooftop terraces
- 3½ story homes
- 3 or 4 bedrooms
- Private elevator
- Total Square Feet from 3,000 - 3,800
- 3½ bathrooms
- Gourmet Kitchens
- 2 and 3 car garages
- EnergyStar®



“ We wanted to bring a different experience to downtown Asheville living. Our elegantly spacious homes offer the amenities and lifestyle you always wanted, in a historic neighborhood where everything is at your doorstep. ”

- JAY LURIE AND KEVIN KERR, Developers with a Vision



We would love to hear from you.

CALL: Our Sales Office at 828.552.4665

EMAIL: [info@TheBroadwayAsheville.com](mailto:info@TheBroadwayAsheville.com)

VISIT: [TheBroadwayAsheville.com](http://TheBroadwayAsheville.com)

THE  
REAL  
ESTATE  
CENTER

≡ B ≡

THE BROADWAY





## Historic Resources Commission of Asheville and Buncombe County

### Montford Action Agenda 7/9/20

Members present: Chair Emily Kite, Bryan Moffitt, Stephanie West, Valeria Watson, Emily Spreng, William Eakins, Benjamin Mitchell, Gail Lazaras, Will Hornaday

Staff present: Alex Cole, Shannon Tuch, Jannice Ashley

### Item, Summary and Action

**63 Panola Street**—Construction of a two-story, 2,870 square foot primary structure.

**Action**—Approved

**134 Flint Street**— Construction of a 1 ½-story, 982 square foot accessory structure in rear yard.

**Action**—Approved

**273 Pearson Drive**—Preliminary subdivision approval request to divide a 1.72 acre lot into one 1.317 acre lot and one 0.43 acre lot.

**Action**—Approved

Please refer to the website ([www.ashevillenc.gov](http://www.ashevillenc.gov)) for the full approved minutes after the following month's meeting.

### HRC Application Portal

The city is now accepting HRC applications digitally via the Development Portal at this address:

<https://develop.ashevillenc.gov/>

## Montford Convenience Store

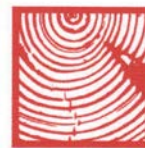
Your local neighborhood store

### Hours:

Monday thru Saturday - 8am to 11pm

Sunday - 9am to 10pm

231 Montford Avenue • phone 828-258-1879



## LOGAN RESTORATION & CONTRACTING

Michael Logan

828.707.8877

michael@ashevillerestoration.com

a licensed, insured, and lead-safe company

Historic Window and Door Restoration specialist



## ONECLICKFIX



TRUSTED & PROFESSIONAL COMPUTER REPAIR SERVICES FOR BUSINESSES

### ONE CLICK FIX

438 Montford Ave,  
Asheville, NC 28801  
info@oneclickfix.com  
www.oneclickfix.com



One Click Fix provides exceptional tech support for all your business needs. Call today to get a quote on our remote services that will keep your network and devices up and running 24/7/365.



THE FASTEST AND MOST RELIABLE SERVICE IN ASHEVILLE

ONE CLICK FIX 828-318-8558

## **Muskrat Chipmunk Love**

*We have noticed chipmunks hanging out on the ground by the bird feeder. And then, the other day one ran into our house through the open front door. We gave chase and the visitor ran through the house and out the back door, which was also open. Cute. - editor*



There were plenty of acorns this spring, and now the chipmunks are driving people nuts.

Their frenetic activities can be entertaining. But this summer in New England the varmints are making a nuisance of themselves, darting to and fro, digging holes in gardens, and tunneling under lawns.

Plentiful acorns last fall meant there was still plenty of food on the ground when the chipmunks emerged from winter and got busy breeding this spring, said Shevenell Webb, a small mammal biologist with the Maine Department of Inland Fisheries and Wildlife.

The result is a bumper crop of the critters.

“They’re cute. They’re fun to watch in the forest as they duck in and out of the holes and play peekaboo,” Webb said. When their cheeks aren’t bulging with nuts, chipmunks make a distinctive “chip” sound, she said.

But they’re also destructive. They can destroy lawns and gardens with their burrowing, and can even get into homes, Webb said.

“We can’t grow a tulip without them digging it up,” Steven Parren, wildlife program diversity manager for the Vermont Department of Fish and Wildlife, said of the chipmunks in his yard. “They don’t even pause.”

There were so many acorns in one of the areas that he monitors that the rodents that rely on them couldn’t stash them all away for the winter. Plenty remained on the ground this spring. In addition to chipmunks, he said, he’s seeing more squirrels, rabbits and a variety of different kinds of mice.

People needn’t get too alarmed over overpopulation. Small mammal populations tend to explode, then crash and burn.

Such is life near the bottom of the food chain, where food supply ebbs and flows and chipmunks are easy prey for owls, hawks, snakes, foxes and raccoons. Even if their lives aren’t cut short, individual chipmunks tend to live only for three years, Webb said.

Many New Englanders recall a similar spike in squirrel populations in 2018 in New England. The boom-and-bust cycle was punctuated by a memorable number of road kills.

“We’ve never seen anything like that. That was a once in a lifetime event,” Webb said.

<https://wlos.com/>

### **How to Contact the Asheville Police Department**



- For emergencies, call 911.
- For nonemergencies and to report suspicious activity, call 252-1110.
- For the Crime Prevention Division, call 259-5834.
- For Police Dispatch, call 259-5888.
- **Sarah Baker is our new Community Resource Officer. Contact her at [sbaker@ashevillenc.gov](mailto:sbaker@ashevillenc.gov)**

## A Father's Tale

*Life with my father was like something out of a book or TV show. There were so many elements that; interwoven throughout his life, made him a dad, unlike others, at least to me as a son. Most of his life was in the military which upon retirement transferred to becoming a businessman owning restaurants, automobile dealerships, and developing subdivisions. Here is just a brief look at some of my memories. I hope you enjoy them.*

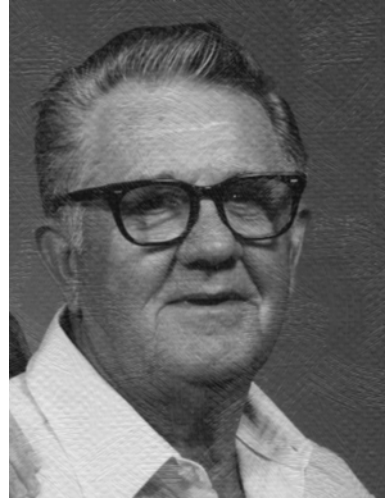
### **Jerry Conner, Westover Drive**

Troy Conner's career in the Marine Corps spanned over 35 years of experiences and close up encounters with history. He was one of the "China Marines", stationed in Shanghai to protect American Citizens and interests from the encroaching Japanese. Luckily, he was also one of the few lucky ones ordered out on the last plane leaving China just before the remainder were overrun by the Japanese and either killed or died in prison camps. He headed up the Amtrak (landing vehicles) bringing forces ashore on Iwo Jima. After the war, he was stationed in Japan on Embassy Duty. Then the Korean War came and he found himself back overseas until the end.

He wouldn't talk about his wartime and only later did we find out how much of a decorated man he was with two purple hearts, numerous international commendations and medals. He would always laugh about not being able to go through metal detectors because he had so much shrapnel in his body, from injuries on Iwo Jima and Korea, that they would set them off.

After returning home, Camp Lejeune and Jacksonville, NC became our main home base and later permanent residence.

For most of my growing up as a kid, my dad was overseas or on various bases around the US. I would envy those kids that lived in one place and became life long friends. For me, it was, make friends quick and don't get too attached; as we would have to once again move. There was a bright side for all this traveling that I didn't realize until much later. We (my brother, sister, and I) saw the United States, almost every state except Alaska and Hawaii.



**Troy Conner**

Every time a transfer came through, he would buy a new station wagon. The back was fitted with an air mattress and blanket for us kids and our journeys began. We saw the US, either on the bottom half or the northern side across the top. My dad was a strict disciplinarian, the military in him; however, he has a kind heart as well. Back then when you traveled across the bottom half of the US, every so many miles you saw signs promoting attractions, like; "See the two-headed snapping turtle just 10 miles ahead." We would plead with him to stop and he did almost always. He only demanded that we use the restroom before getting into the car. He would not stop, and we learned very quickly that rule.

He also had a great sense of humor and play pranks on us all the time. When we stopped in New Mexico, we were told to be careful around the rocks as Gila Monsters (lizards native to the southwest) would hide underneath and if they bit you, they stayed attached until sundown. While in actuality the Gila Monster is a venomous species, we never saw one, except in the roadside museums and never tried to lift a rock to find out. You didn't challenge my dad until he laughed and let you in on the joke.

Traveling across the desert in the '50s was a challenge, as there weren't that many gas stations along the roadside, you carried a water bag in case the radiator overheated. This was all before air-conditioned cars. Leave it to my dad to come up with ways to cool the car. He would get dry ice and place it in the back seat floor, then he constructed a tube with a center compartment and spacer on the bottom. Additional dry ice was placed into the compartment. The front of the tube was parallel to the window and the back curved into the car when the window was raised. Air came through the tube, hitting the dry ice and sending cool air into the car. 100-degree heat was no problem then.

The West to East trip provided many opportunities for us kids. We observed the Painted Desert, stopped at the Grand Canyon to watch native tribal celebrations at the top, and then got to ride the mules down the Grand Canyon.

When we reached the mountains of North Carolina, I fell in love with the vast greenery. Dad would point out the many cows on the mountainside. He would ask us if we knew why they didn't fall over. The answer, according to him, was that the feet on one side were shorter than the other. We never challenged what happened when the cows wanted to come down.

I will never forget the first time I invited friends over for tacos. We had just moved from the west coast to a small town in North Carolina in the '50s and my friends had never heard of tacos. Dad would have his men fly back taco shells from California for us kids. Back then, they were in a tin by Ole El Paso and not available or even heard of in Jacksonville. My dad made up a batch of meat and fixings, fried the shells, and set it out on the table for us. I instructed everyone how to make a taco and that began our great Mexican experience. They always wanted to come over for more tacos.

Over the years there were so many times that my dad would think of others as well as his own family. We never celebrated a holiday by ourselves, dad would always bring home a couple of his men that couldn't make it home to join us for the meal.

My best memories are how much he was loved by the community for his contributions of service, money, and himself. Dad was an avid hunter and fisherman; which he shared with everyone. He helped create the first rescue squad in Jacksonville and became an auxiliary policeman, and fireman in addition to his regular jobs upon retirement from the Marines. He would do a weekly fish-fry for the police, fire department, and other service members as a way of thanking them for being there and always relieved them on holidays to be with their families.

As my dad got older after complete retirement, his routine would be to hook up his boat and trailer and proceed to the base marina to go fishing. The first stop was to the drive-through at Hardee's and order a couple of biscuits and coffee. He had been doing this for years and got to know all the ladies, working the day shifts. He would then return in

the afternoon from fishing to purchase some chicken livers, his dog's favorite, to take home. It was about 6:00 pm and we received a call from the police department inquiring about my dad. When we told them, he was past due home and not there, they suggested that we contact the marina. In the meantime, an alert was sent out all over Jacksonville and everyone began looking for my dad. The marina called and said his truck and trailer were still parked there. My brother immediately called in his friends and alerted the rescue squad, who all met at the Marina and took out a mass of boats looking for my dad.

About an hour later, with searchlights on the boats, they triangulated on a boat and my dad. He had run aground on a sand bar and couldn't get off. He stood up and in his usual joking way, asked "What took you so long." Needless to say, we were all so grateful that no harm had become him. Everything was set in motion because my dad had not stopped by Hardee's for his chicken livers for the dog. The ladies became worried and contacted the police to make sure he was ok.

My dad passed away last year, the day before Father's Day and his 100th birthday. Growing up, I felt like most kids, that he was so strict and we had too much discipline around the house. After having a child of my own, I sat down with my father and told him this and then added that I was so glad he guided me the way he did and thanked him for being such a great dad.

Here is to you and all the other Dads that have nurtured us through life. "Happy Father's Day"

*Editor's Note: This was a Father's Day post on the Listserve in June. Thank You, Jerry!*



## Green Corner

### Mitch Russell

I read on WLOS.com that since COVID-19 hit that there are many more plastic bags & to-go containers finding their way into recycling bins. These two items in particular can “contaminate” other plastics and plastic bags jam the shredders, which slows the shredding process and creates a less desirable plastic mix. Please be sure to keep to-go containers and plastic bags out of your blue recycling can.



Plastic bags can be reused or recycled at area grocery stores. Even though a plastic bag might have a recycling symbol if it crinkles then it's truly not recyclable just like black or any other color microwave tray. Typically lettuce comes in the bags that crinkle. If the bag expands when you press it with a finger for an inch or so then it can be recycled at a grocery store.

Below are items from Curbie's website that they accept for recycling. The city also has a website & free app, AVLCollects, that details the recyclable items below. With the app you can also see what day is your recycling/trash collection day as well as where to recycle old TVs, paint and other hard to recycle/dispose of items.

<https://www.ashevilenc.gov/department/public-works/sanitation/avl-collects/>

Thanks for doing your part to keep the stream clean & having one of the highest recycling rates in the state!

### Metal Cans

- Aluminum
- Steel
- Tin

### Only food, beverage, personal care or household plastic containers (jugs, tubs, bottles, and jars)

- Glass Bottles and Jars (clear, brown, green)
- Milk & Juice Cartons
- Juice Boxes

### Mixed Paper

- Newspapers and inserts
- Catalogs
- Junk mail
- Magazine
- Cereal boxes
- Egg cartons (paper)
- Envelopes
- Manila envelope

## Resource Directory

### House Histories

Learn the story of your house. Who lived there, who owned it and what they did for a living.

- For more information call Sharon at 777-1014

### Historic Walking Tours

Stroll the neighborhood or downtown. Walking tours of historic Montford, Riverside Cemetery, Biltmore Village and downtown Asheville, call 777-1014.

### Smart Feller Tree Works

- Ira Friedrichs • 545-5503 (NEW cell)
- irafriedrichs@gmail.com.

Down trees got you down? Contact us for all your tree removal and pruning needs! We are locally licensed and insured. Please call for free estimates. Montford references available. Thanks.

### Square Peg Construction Inc.

Add beautiful custom woodwork to your historic home: New upgrades like wood paneling, built-in cabinetry, trim, doors, stairs and railings. Small details add big impact! Montford references.

- Call your neighbors, Leslie and David Humphrey 277-5164