



# MONTFORD

THE NEWSLETTER OF ASHEVILLE'S MOST HISTORIC NEIGHBORHOOD  
Vol. 23 No. 11  
NOVEMBER '18

## CALL FOR VOLUNTEERS

The Montford Neighborhood Association is looking for a few good gardeners! Come help us improve our gateway by dressing up the face of the Montford North Star Academy at 90 Montford Avenue. The MNA is sponsoring a landscaping project with the school on Saturday, November 17, and we need your help.



Montford North Star Academy today

1950 rendering of the William Randolph School which later became the home of the Isaac Dickson School.



**WHAT:** Montford North Star Academy Landscaping Project

**WHERE:** 90 Montford Avenue

**WHEN:** Saturday, November 17, 9 a.m. – 1 p.m. You may volunteer for all or part of this time. (The project is scheduled for after elections and in advance of the Holiday Home Tour on December 8.)

**BRING:** Work gloves and any tools you may have: shovels, rakes, wheelbarrow, broom (please label tools with your name). We will also have extra tools available if you don't have any.

**SIGN UP:** Please sign up for all or part of the scheduled time by sending an email with your availability to: [lynn.raker@gmail.com](mailto:lynn.raker@gmail.com), with subject line "North Star Landscape".

continued on page 7...

## INSIDE



### Montford Traffic Safety Update

Read the latest update and learn how to get your bumper sticker—Page 4

### The 23rd Annual Holiday Tour of Homes

Saturday, December 8  
1 to 5 p.m.

Details on page 6 and at [montfordtour.com](http://montfordtour.com)



## TEMPIE AVERY MONTFORD CENTER

**Calendar**

**Fall Yard Sale**—November 10. 8am to 1pm. An entire gymnasium full of goods! **Free.**

**Badminton**—Join this active group of players on Friday nights 5:30pm - 8:00pm and Sunday mornings 9am - 11am.

**Capoeira**—Learn the Afro – Brazilian art which combines martial arts, dance, and culture. Saturdays 10am - noon.

**Recommended donation of \$6 per class.**

**Table Tennis**—Meets every Monday 5:30 - 8pm, Wednesday 11-2 and Saturday 11am - 2pm.

**Line Dancing**—December 15 2:30pm - 5:30pm. **Free.**

**Ukulele**—Mondays 6pm - 8pm. This self-led group welcomes all levels of talent including beginners. **Free.**

**Volleyball**—Pick up games every Sunday 11-2. \$5/person.

**Martial Arts**—Tuesday nights 5:30pm.

For information regarding any of our programs, facility hours or special events, call 253-3714 or email [skriewall@ashevillenc.gov](mailto:skriewall@ashevillenc.gov)  
Shana Kriewall, Facility Manager,  
Tempie Avery Montford Center

**Olli Art Bazaar, Nov. 9-10, 2018**


Mark your Calendar to attend the Osher Lifelong Learning Institute (OLLI) Art Bazaar, Friday November 9, 11am - 4pm. & Saturday November 10, 11am - 3pm at the Reuter Center on the campus of UNC Asheville.

You will discover a delightful selection of paintings, fiber arts, photography, jewelry, scarves, mixed media pieces, handcrafted soaps & lotions, cards and paper art, pottery, wood art and so much more!

For directions: <https://olliasheville.com/reuter-center>

## Resource Directory

### House Histories

Learn the story of your house. Who lived there, who owned it and what they did for a living.

- For more information call Sharon at 777-1014

### Historic Walking Tours

Stroll the neighborhood or downtown. Walking tours of historic Montford, Riverside Cemetery, Biltmore Village and downtown Asheville, call 777-1014.

### Smart Feller Tree Works

- Ira Friedrichs • 545-5503 (NEW cell)
- irafriedrichs@gmail.com.

Down trees got you down? Contact us for all your tree removal and pruning needs! We are locally licensed and insured. Please call for free estimates. Montford references available. Thanks.

### Square Peg Construction Inc.

Add beautiful custom woodwork to your historic home: New upgrades like wood paneling, built-in cabinetry, trim, doors, stairs and railings. Small details add big impact! Montford references.

- Call your neighbors, Leslie and David Humphrey 277-5164

## Montford: Boom to Bust and Back!

**Wednesday, November 14, 2018**

**Asheville Chamber Visitors Center,**

**Lenoir Rhyne boardroom,**

**38 Montford Ave. Asheville NC 5:30 P.M.**

Join the Preservation Society for a talk about Montford: Boom to Bust and Back, the life cycle of a neighborhood. Montford was designed to be the premier subdivision near Asheville, later to become a blighted area full of drugs and crime and brave new pioneers. Sharon Fahrer reveals a picture of a neighborhood that was swallowed up by the City of Asheville creating a trolley suburb. Discover some of Montford's illustrious residents, its mansions and its hovels, its trials, tribulations and triumphs, what was lost and what remains. Learn what clues from the past alert visitors and residents alike to the story of this historic neighborhood. Has the mystery of how Montford was named been solved? Where was Stumptown? Who were the first residents? How did Montford reinvent itself? What homes have been lost and why? Who designed the original homes and who lived in them?

Why is Montford so economically diverse and can it last? Sharon Fahrer will answer these questions and some that you may add when you attend this program.

CONTACT: Jack Thomson, PSABC Director,  
828-254-2343, [director@psabc.org](mailto:director@psabc.org)



**THE MIKE MILLER TEAM**

**The Mike Miller Team**  
**(828) 712-9052**  
[millerteam@townandmountain.com](mailto:millerteam@townandmountain.com)  
[www.themikemillerteam.com](http://www.themikemillerteam.com)



"Mike is not about selling or pushing - he is all about earning trust & developing a relationship. He respected my thoughts during the negotiating process & represented us well. As a lifelong Asheville resident Mike had excellent recommendations on folks to help out with inspections, survey, closing attorneys & more (including restaurants & music venues). His team at Town and Mountain Realty is professional and friendly. Going to their office is a cross between visiting a real estate office & visiting someone's home. You cannot go wrong working with Mike Miller!" - Don K.



[www.townandmountain.com](http://www.townandmountain.com)

## Join the Montford listserv.

The Montford listserv is a neighborhood discussion list. This is a place where you can exchange news about the neighborhood. Visit [Montford.org](http://Montford.org) to learn more.

# Montford Traffic Safety Update

Marc Voorhees

Asheville’s Department of Transportation conducted a traffic study (volumes and speeds) on Montford Avenue at two different locations in August and September. We now have the results.

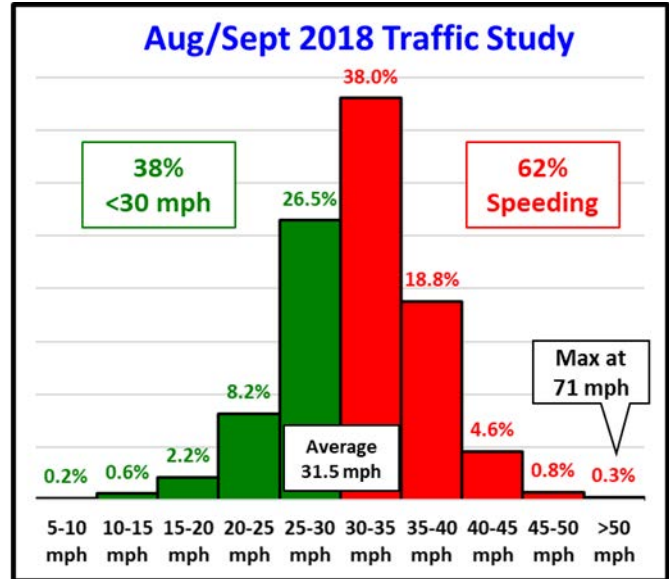
In comparison to the prior study in June 2014 on Montford Avenue (which was discussed at the October MNA meeting), the speed and number of speeders has increased.

- Average vehicle volume increased by **+3%** (now at 4,642 per day)
- Average vehicle speeds increased by **+5%** (now at 31.5 mph)

In looking at those averages, it would imply that a bad safety environment got a “little” worse. But averages are misleading. The underlying data is much more concerning.

- The number of speeders per day (>30 mph) increased by **+30%** (reminder: 30 mph is already too fast for a residential street)
- The proportion of vehicles now speeding is **62%** (reminder: in the 2014 study, 50% of the vehicles were speeding)
- The number of very aggressive speeders per day (>40 mph) increased by **+33%** (reminder: pedestrians struck at 40 mph have 10% survival rate)
- The top speed clocked during the study was **71 mph** (between 10-11am on a Thursday morning!)

This recent data adds urgency to the Montford Neighborhood Association’s effort to address speeding and reckless driving in Montford, which is focused on the following three areas:



Note: Straight (unweighted) average of the two measurement locations

**1- Enforcement** — working with Asheville Police Department to increase on-duty and off-duty traffic patrols

**2- Engineering** — working with City of Asheville Dept of Transportation to make design changes to Montford Ave (reduce posted speed limit to 25mph, enhance signage, restripe pavement and install temporary radar speed signs)

**3- Education** — increasing public participation and awareness within the Montford community on the perils of speeding and reckless driving

The educational component may seem like a soft and fuzzy area...but “we” are the speeders in Montford, as “we” are the residents, renters, visitors and service people who are driving on Montford streets. So we need to be part of the solution. To increase awareness in the community, the MNA is launching a **Slow Down Montford** campaign.

As an initial low-cost and visible way to increase awareness, we have created a **Slow Down Montford bumper sticker**.

The bumper stickers were delivered door-to-door through what remains of the old Montford Newsletter delivery route. Unfortunately that was able to cover only part of Montford. So if you didn’t get a bumper sticker at your home, you can try getting one at Chiesa, Nine Mile and



Montford Convenience; or while supplies last, sending a request via email to [SlowDownMontford@gmail.com](mailto:SlowDownMontford@gmail.com) with your address.

We are not so naïve to think that a bumper sticker by itself will solve our problems. But it is an opportunity to increase awareness and to make a visible public statement that we all want to Slow Down Montford.

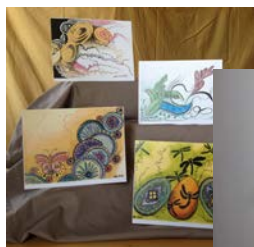
Please show your support of safe driving in Montford by displaying your bumper sticker and respecting the speed limit in Montford and throughout Asheville. Spread the word to your friends and neighbors, and together we can make a difference and save lives.

To learn more, please send an email to [SlowDownMontford@gmail.com](mailto:SlowDownMontford@gmail.com) asking how you can help.




**Order your Montford Banner**

Three colors to choose from: red, green, and mustard yellow. Contact Leslie at [leslie@squarepeginc.net](mailto:leslie@squarepeginc.net) to order yours today.



Adrienne Gilbert



Dana Fehsenfeld



Heather Biard



Jacque Allen

# MONTFORD ARTWALK

**Thank you** Montford artists for sharing your creative work this year. You are an inspiration to us all.

## 2018 participating artists:

- |                  |              |                    |                 |              |                      |                     |
|------------------|--------------|--------------------|-----------------|--------------|----------------------|---------------------|
| Adrienne Gilbert | Hannah Jeske | Toni Graves        | Dana Fehsenfeld | Jacque Allen | Marley Ann Brushwood | Nora-Leah Schachter |
| Pamela Phillips  | Chris Sharpe | Carolyn Fehsenfeld | Joseph Pearson  | Alan O'Neal  | Harold Sepulchre     | Lisa Morphew        |
| Susan Loftis     | John Morris  |                    | Heather Biard   | Clay Savely  |                      |                     |
| Christa Capua    | Diane Bove   |                    |                 |              |                      |                     |

**Saturday,  
December 8 2018  
1 to 5 p.m.**

23<sup>RD</sup> ANNUAL  
**Holiday**  
**Tour of Homes**



**332 Montford Ave.**



**91 Pearson Dr.**



**166 Montford Ave.**



**239 Montford Ave.**



**207 Pearson Dr.**



**27 Madison St.**



**20 Watauga St.**



**29 Westover Dr.**



**138 Cumberland Ave.**



**28 Soco St.**

Montford — Asheville's most historic neighborhood — will showcase 10 homes at the 23rd Annual Holiday Tour of Homes on Saturday, December 8, 2018, from 1 until 5 p.m. Visitors will explore the lovingly restored or carefully constructed eclectic architecture of homes in one of the largest, intact historic districts in the state.

Visit [montfordtour.com](http://montfordtour.com) to reserve tickets. ALSO, we welcome volunteers and sponsors.

# CALL FOR VOLUNTEERS

Continued from front page...

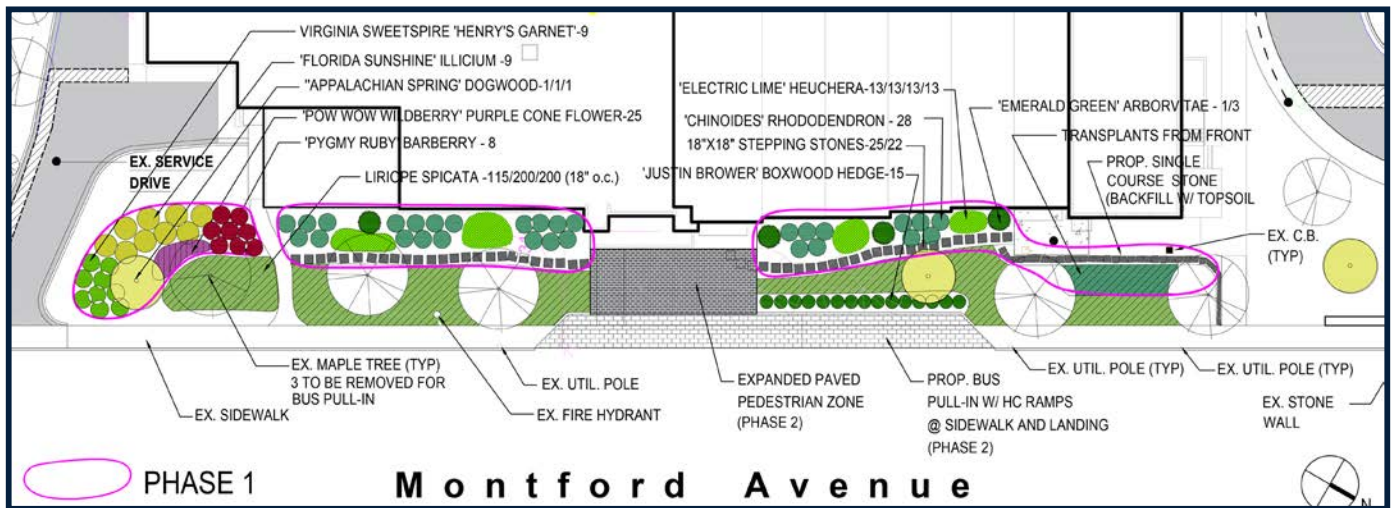
Do you recall the temporary construction zone at the former Isaac Dickson School that began to feel more like a permanent annoyance? With the barricades now a distant memory, the 1950 school building is back fully functioning as one of the more desirable schools in the Asheville City School System. The Montford North Star Academy currently serves 6th and 7th graders as a STEAM (Science-Technology-Engineering-Art-Math) and project-focused learning environment. In 2019-2020, it will expand its curriculum to 6th-8th grades.

Unfortunately, the building renovation did not include a landscape plan, although the Roots Foundation assisted with planning and planting in areas off the parking lot. Roots also planted a few herbaceous plants in various areas in front of the building. With their help, these plants will be repositioned into a more permanent location, and

new low, durable, shade-tolerant shrubs and ground cover will help soften the 1950's architecture.

Our work on November 17 will focus on the area between the mature maple trees and the building façade. The open sunny "knoll" at the south end next to driveway provides an excellent opportunity for additional, showier plantings, but we will likely postpone planting that area until the spring. For the sunny knoll, the school would prefer low-maintenance plantings that may easily be mowed around, discouraging looser plantings such as a pollinator garden. On that note, there is already a pollinator garden located on the west-facing slope above the parking lot.

The plan for Phase 1 of the landscaping has been approved by the Asheville City Schools and has received a Minor Work Certificate of Appropriateness from the Historic Resources Commission. We just need some hardy volunteers to make the project a reality!



**Paul Dixon**  
828.215.7772  
PDIXON77@YAHOO.COM

COMMERCIAL ■ RESIDENTIAL ■ INTERIORS  
EXTERIORS ■ LICENSED

**RITA HAYES**  
*music instruction and performance*  
*classic and jazz music for concerts, galas, receptions, weddings*

flute - voice - piano  
hammered dulcimer - music theory

828-777-6322  
braidstream@gmail.com  
www.braidstream.com




**TRUSTED & PROFESSIONAL COMPUTER REPAIR SERVICES FOR BUSINESSES**

**ONE CLICK FIX**  
438 Montford Ave,  
Asheville, NC 28801  
info@oneclickfix.com  
www.oneclickfix.com



One Click Fix provides exceptional tech support for all your business needs. Call today to get a quote on our remote services that will keep your network and devices up and running 24/7/365.



**THE FASTEST AND MOST RELIABLE SERVICE IN ASHEVILLE**

**ONE CLICK FIX 828-318-8558**

**Your Montford Neighborhood Real Estate Agent**



**Looking to buy or sell a home? I can help.**

**James Mullis**

Broker | Realtor®

**843.296.7500**

**Over 15 years experience. Licensed in NC and SC.**

"As a staff member at Keller Williams, I come into contact with up to 400 real estate agents on any given day. When it came time for me to choose a realtor to help me purchase my home, I knew immediately that James would go above and beyond for me. Purchasing a home can be a bit intimidating, especially in a multiple offer situation, but James was there every step of the way, negotiating and explaining the process in a way that made me confident about the whole transaction. If you are looking to sell, buy, or invest in real estate, James is a reliable agent who can put your trust in." - Alex Y.

**kW PROFESSIONALS**  
KELLERWILLIAMS. REALTY

Each office is independently owned and operated.



**SMART FINANCIAL PLANNING REQUIRES**

**Both the Head and the Heart**

Planning your financial future isn't a unilateral brain exercise. We create individualized financial plans for each client by understanding your personal dreams as well as your pragmatic needs. Whether it's a retirement plan, investment strategies or help navigating life's changes, we develop a comprehensive road map for the whole you.



**STARKS FINANCIAL GROUP**

**starksfinancial.com | 828.285.8777 | 877.285.RJFS (7537)**  
440 Montford Avenue, Asheville, NC 28801

**Securities offered through Raymond James Financial Services, Inc.**

Starks Financial Group is not a registered broker/dealer and is independent of Raymond James Financial Services. Securities offered through Raymond James Financial Services, Inc., Member FINRA/SIPC. Investment advisory services offered through Raymond James Financial Services Advisors, Inc.



# HABITAT TAVERN & COMMONS

Small Batch Brewery and Beautiful Event Space Located in Downtown Asheville

\*\*\*\*\*

[www.habitatbrewing.com](http://www.habitatbrewing.com) features our community events calendar!



174 Broadway St, Asheville 28801  
828-484-6491  
[habitatbrewing@gmail.com](mailto:habitatbrewing@gmail.com)



**SMART FELLER TREEWORKS**

MEMBER ISA  
BEST OF WEST ASHEVILLE  
MEMBER TCIA  
DIVING WITH CLEAN WATER  
Just economics

828.545.5503 • [smartfellertreeworks.com](http://smartfellertreeworks.com)

**NEST REALTY**  
*the Amy and Eva team*

\*OSCAR IS NOT LICENSED TO PRACTICE REAL ESTATE

<p>AMY GILES PRINCIPAL BROKER 828.273.1270 <a href="mailto:amy.giles@nestrealty.com">amy.giles@nestrealty.com</a></p>	<p>EVA HARTMAN PRINCIPAL BROKER 828.242.3843 <a href="mailto:eva.hartman@nestrealty.com">eva.hartman@nestrealty.com</a></p>
---	---

394 Merrimon Ave, Suite A | Asheville, NC 28801 | [NestRealty.com](http://NestRealty.com)

# Montford Reflections

## Remembering Montford Park's Wading Pool

Longtime residents remember the wading pool which later was filled in with sand. Now it is a grassy spot perfect for tai chi, picnic blankets, and wintertime sledding.

Montford resident **John Coutlakis** remembers it this way:

“I was digging through old boxes and was so excited to find this old photo. By the late 1960s, my father got into photography. This may have been a gathering of the nascent Montford Community Club—hence my dad brought his camera. On closer examination of the old photo, I think there is white sand in the remains of the old pool, not water. This might have been a period when the city simply turned it into a giant sandbox.

I remember the original wading pool would sometimes get dirty (mud) so they drained it every day. But if you got there on summer mornings it was the best! I wish they would do something like that again for the parks, but injury awareness is very high today I guess. Perhaps there are health reasons as well. But damn we had fun there. The bottom was blue and watching it fill as the morning sun hit it was very cheerful.”



▲ Photo courtesy John Coutlakis.

**PARKS WITH PLAY SPACE—**

ASTON PARK—See-Saws, Swings, Sand Box, Softball Diamond, Picnic Ground, Tennis Courts, Shuffleboard Courts, Horse Shoes, Shelter House, Rest Room.

MALVERN HILLS PARK—Swimming Pool, Swings, Sand Box, See-Saws, Paddle Tennis Court, Tennis Courts, Horse Shoes, Picnic Grounds, Shelter House, Rest Rooms, Bath House.

\* MONTFORD PARK—Wading Pool, Sand Box, Tennis Courts, Horse Shoes, Shelter House, Rest Rooms.

KENILWORTH PARK—Wading Pool, Swings, See-Saws, Merry-Go-Round, Sand Box.

WEAVER PARK—Swings, See-Saws, Slide, Horse Shoes, Softball, Shuffleboard Courts, Rest Rooms, Shelter House.

RIVERVIEW  
Picnic Ground  
House, Shelter  
MURRAY HILL  
Gym, Sand

▲ Asheville Citizen-Times 6/17/1960

The project now under way calls for general improvement of Aston, Montford, Horney Heights, Kenilworth, Magnolia and Rhododendron parks, and also McCormick field and Memorial stadium.

It includes landscaping, planting, construction of six tennis courts, painting and repairs to buildings, and improving and in some instances

**\$100 a Month Sick Benefit Policy At Special Low Cost**

For Limited Time Only Policy Sent Free For Inspection

The National Protective Insurance Co., nationally famous for its \$3.65 accident policy, is now issuing to

Civil Works administration funds are above, one of many to be seen throughout rhododendron on the Beaucatcher turf plants and vines will grace banks of arter

constructing new athletic fields at Horney Heights, Aston, Montford and Kenilworth parks. The fields will be used mostly for playground ball.

Two children's wading pools are included, one at Aston park and the other at Montford park. Channels of two streams, in Kenilworth and Horney Heights parks were changed.

At Montford park the rock garden was continued for a distance of 250 feet and 1,400 plants—10 varieties—are to be planted in the garden. Park officials expect to have the plants in the ground within two weeks.

**Rhododendron Planted**

Already 1,450 rhododendron plants have been set and 600 of mountain

▼ Asheville Citizen-Times 2/4/1934



## Historic Resources Commission of Asheville and Buncombe County

### Montford Action Agenda Oct 10, 2018

Members present: Chair Bryan Moffitt, William Eakins, Woodard Farmer, Craig Cline, Emily Spreng, Amanda Warren, David Carpenter, Hillary Mannion, Emily Kite, Valeria Watson, Benjamin Mitchell, Charles “Ed” Flowers

Staff present: Stacy Merten, Alex Cole, Jannice Ashley, Peter Knipe

#### Item, Summary and Action

**8 Short Street**—Construct new 2,394 square foot, two-story primary structure

**Action**— Continued

**178 West Chestnut Street**—Construction of 2’ tall stone retaining wall along sidewalk at front property boundary; install minor landscaping

**Action**— Continued

**24 Elizabeth Street**—After the fact approval to install post and wire fence in front yard

**Action**— Continued

**339 Cumberland Avenue**—Amend previously issued CA for construction of new driveway with retaining walls in unopened right of way exiting from Cumberland Avenue

**Action**— Continued

**246 Cumberland Avenue**—Install 34’ x 14’ in-ground swimming pool in rear yard with surrounding deck, pergolas, outdoor kitchen, and outdoor showers; install new retaining wall, gravel walkways, water feature, and gas fireplace with seating in rear yard; construct 13’ x 6’ greenhouse in rear yard; install fence in rear yard; remove one mature tree to allow for construction; expand parking area in side yard

**Action**— Continued

Please refer to the website

([www.ashevillenc.gov](http://www.ashevillenc.gov))

for the full approved minutes after the following month’s meeting.

## Green Corner

As the days have been cooling our thoughts turn to the crisp mornings that come with fall. I run hot and my wife runs cold, so I don’t think my fondness for cooler/colder weather resonates quite as much with her. We often battle over the thermostat setting, however to her credit she has become more tolerant of the house being a little cooler.

This brings me to my point: keeping your house temperature closer to the outdoor temperature for the season. Note that I did not say keep it as cold or as hot as outside. Keeping the thermostat at 74 to 76°F during late spring/summer and 68 to 70°F during fall/winter will



help conserve electricity or natural gas. Wearing shorts & a short sleeve shirt or long pants & sweater/hoody can help make you more comfortable.

The rationale behind mimicking the outside climate in our inside environment is obvious for reducing our energy consumption, but also reducing pollution since both electricity and natural gas used to power our HVAC systems produce pollution. This is especially true in the spring/summer due to the ambient temperature raising the level of pollutants. It’s still a factor in fall/winter, but not at the same level.

So, turn down the heat, put on an extra layer & enjoy the weather outside.

Be well, Mitch Russell



**NINE MILE**  
fresh \* local \* affordable

505-3121  
233 Montford Ave  
Open 7 days/week  
11:30am to 10:00pm  
ninemileasheville.com

**Montford Convenience Store**  
*Your local neighborhood store*

**Hours:**  
Monday thru Saturday - 8am to 11pm  
Sunday - 9am to 10pm  
231 Montford Avenue • phone 828-258-1879

**SQUARE PEG**

**We're Different**



**828-277-5164**

FINISH CARPENTRY  
CABINETS  
DESIGN

□  
Asheville

**THE OLD TOWN SALVAGE CO.**

Salvaged doors, windows, mantles and unique reclaimed items

**BUY · SELL · TRADE**

**828-216-7175**

Visit us at  
Antique Tobacco Barn  
75 Swannanoa River Rd  
Asheville, NC 28805



**Halloween in Montford** - Digital photography courtesy of Mark Combs.

**The Montford Newsletter** is published online by the Montford Neighborhood Association, P.O. Box 7181, Asheville, NC 28802 for the residents of Asheville's first historic neighborhood. We welcome articles and advertising by the 20th of the month. Contact Editor Ross Terry at ross@krtedesign.com, 230-7439 for more information