



MONTFORD

THE NEWSLETTER OF ASHEVILLE'S MOST HISTORIC NEIGHBORHOOD
Vol. 23 No. 8

AUGUST '18

Be part of the Tour of Homes



332 Montford Ave. (Corner of Watauga)

Montford's Holiday Tour of Homes is only a few months away and planning is in full swing. We are reaching out to Montford neighbors to show off their homes, be tour sponsors, or volunteer as docents.

Learn How. Details on Page 5

TEMPIE AVERY MONTFORD CENTER

Calendar

Badminton—Join this active group of players on Friday nights 5:30pm - 8:00pm and Saturday Mornings 9am - 11am. If you don't think badminton is a great workout, you haven't played at Montford!

Capoeira—Learn the Afro – Brazilian art which combines martial arts, dance, and culture. Saturdays 10am - noon.

Recommended donation of \$6 per class.

Table Tennis—Meets every Monday 5:30 - 8pm, and Saturday 11am - 2pm.

Pick-up Basketball—(for ages 16 & Up) - Tuesday evenings 5:45 - 8pm. **Free.**

Line Dancing—June 16 2:30pm - 5:30pm. **Free.**

Ukulele—Mondays 6pm - 8pm. This self-led group welcomes all levels of talent including beginners. **Free.**



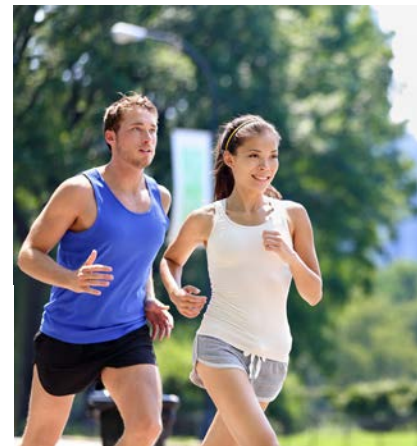
Fall Yard Sale—October 13. Come to the center to reserve a table for only \$5.



Hot August Night 5K—August 25 - Our annual family friendly race! \$15 before August 15th, \$20 after. 12 & Under only \$10. Includes t-shirt for those who register by August 15.

To register call Shana at 253-3714 or visit:

<https://www.active.com/running/5k>



Tempie Avery Montford construction has begun!

For information regarding any of our programs, facility hours or special events, call 253-3714 or email skriewall@ashevillenc.gov
Shana Kriewall, Facility Manager,
Tempie Avery Montford Center

HABITAT TAVERN & COMMONS

Small Batch Brewery and Beautiful Event Space Located in Downtown Asheville



www.habitatbrewing.com features our community events calendar!



174 Broadway St, Asheville 28801
828-484-6491
habitatbrewing@gmail.com



Paul Dixon
828.215.7772

PDIXON77@YAHOO.COM

COMMERCIAL ■ RESIDENTIAL ■ INTERIORS
EXTERIORS ■ LICENSED

RITA HAYES

*music instruction and performance
classic and jazz music for concerts, galas, receptions, weddings*

flute - voice - piano
hammered dulcimer - music theory

828-777-6322
braidstream@gmail.com
www.braidstream.com



the Amy and Eva team



*OSCAR IS NOT LICENSED TO PRACTICE REAL ESTATE

AMY GILES
PRINCIPAL BROKER
828.273.1270
amy.giles@nestrealty.com

EVA HARTMAN
PRINCIPAL BROKER
828.242.3843
eva.hartman@nestrealty.com

394 Merrimon Ave, Suite A | Asheville, NC 28801 | NestRealty.com  



Guardian ad Litem helps teenagers

Asheville, Buncombe County – The Guardian ad Litem Association of Buncombe County (GALABC) announced today that they will financially support teenage children in the foster care system who are participating in the LINKS program at Buncombe County Health and Human Services. The LINKS program assists teenagers in foster care, or in the care of a family relative, with the process of becoming independent adults. The program is so named, LINKS, because its intent is for the youth to have ongoing connections with family, friends, mentors, community, employment, education, financial assistance, skills training, and other resources to facilitate the transition to adulthood.

GALABC raises funds throughout the year to support and enrich the lives of children who have been abused or neglected. Tom Siekman, Board President of the Guardian Association said today “We are pleased that we have the financial resources to assist the teenagers in foster care at BCHHS at this time. The circumstances of their childhood, often very stressful, adversely affect their ability to learn to function effectively as independent adults.”

The LINKS program begins with an assessment of the youth’s strengths as well as their needs for education around various aspects of transitioning to adulthood. This information is then reflected in a plan with goals that the young person focuses on. The goals address independent living skills, academic progress, employment skills and others. The youth is paid up to \$105 per month depending

on how many of these goals are achieved. They use the money to pay for such things as continuing education expenses, cell phones, driver’s licenses, or car expenses. Approximately 40 children are in the program.

State funding for the LINKS program funding has been reduced over the last four years. BCHHS Social work Director, Rebecca Smith, states, “These teenagers entering adulthood need the encouragement and training that the LINKS program provides to help establish their place in the world. We are grateful for the GALABC’s support of these youth.”

GALABC is a nonprofit organization whose mission includes advocating for the best interests and needs of abused and neglected children, both in court and their everyday environments. To learn more about GALABC go to galabc.org or to [facebook.com/Guardian ad Litem of Buncombe County](https://facebook.com/GuardianadLitemofBuncombeCounty). The members of GALABC are community volunteers trained by the Guardian ad Litem Office, a State Office, to serve these children by advocating for their best interests in court. To learn about Guardian ad Litem and help provide a voice for foster children in court, visit volunteerforgal.org, or go to facebook.com/ncGuardianAdLitem.

Tom Siekman, President, Guardian ad Litem Association of Buncombe County

828-335-2002, tcsiekman@gmail.com



Guardian ad Litem
Association of
Buncombe County

Tour

Continued from front page...

The 23rd Annual **Montford Holiday Tour of Homes** will take place **Saturday, December 8, 2018, from 1:00 – 5:00 pm**—only four months away. The Tour is the primary fundraiser for the Montford Neighborhood Association (MNA), a non-profit community organization that strives to keep our neighborhood progressive, safe, lively and fun.



Ongoing MNA projects funded by the Tour include programs for youth at the Tempie Avery Montford Center, the free Montford Newsletter, the Montford Arts and Music Festival, and security on Halloween night. Other recent projects include signage assistance for neighborhood businesses, street banners for events, and partnering with the City of Asheville to build new bus shelters on Montford Avenue. New and exciting projects are planned for 2018, including an emphasis on neighborhood beautification.

Your beautiful home could be highlighted for tour-goers—and then there are the homeowner perks. Contact Ellen to learn how:


Ellen Nutter, Chair, Tour Committee
elnutter@aol.com 505-8242


Be a part of this historic neighborhood by supporting us! Sponsors are acknowledged on the web and in our full-color booklets. Contact Terry to lean about sponsor opportunities:



Terry Peters
terryptrs@yahoo.com 646-265-9323

Volunteer as a docent. Welcome tour-goers to a home and share details that will be provided to you. Contact Trudy to volunteer:

Trudy Galynker
trudygalynker@gmail.com 280-6934






TRUSTED & PROFESSIONAL COMPUTER REPAIR SERVICES


One Click Fix Computer Repair is proud to call Montford home.


Stop by our shop or call us today to get all your needs met!

ONE CLICK FIX
 438 Montford Ave,
 Asheville, NC 28801
info@oneclickavl.com
www.oneclickavl.com


WHY CHOOSE US?
 Fast Repairs.
 Professional & Experienced.
 Trusted & Committed Company.



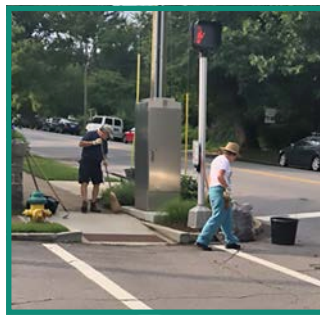




We repair all Macs and Windows PCs.
THE FASTEST AND MOST RELIABLE SERVICE IN ASHEVILLE.

Monday - Friday 9am - 5pm
 **CALL NOW 828-318-8558**

It Takes a Neighborhood Volunteers make a big difference



All it takes is a few neighbors working together to make a big difference. Early Saturday morning July 14, before the day's heat set in, a small group of Montford residents weeded, edged and mulched the plantings at the heavily traveled intersection around the Montford Convenience Store and Nine Mile. In just a couple of hours, **Foster de la Houssaye, Lynn Raker, Steve Raker, David Boyles, Marti Boyles, George Zourzoukis, Randy Hall** and **Erin Dickinson** transformed the beds back to their original beauty. Erin then went on to weed the flower bed in the small "park" at the intersection of Montford and Waneta.

Last year, following the intersection realignment and pedestrian improvements, MNA took on the task and expense of planting the beds with hardy perennials and small flowering trees. It is now up to the neighborhood to maintain the plantings. Volunteers help defray additional costs to the MNA, and it's a great opportunity to meet your neighbors. Our thanks go out to those who participated, and we look forward to more opportunities for residents to come together to improve the overall appearance of the neighborhood.



In the meantime, the MNA Board suggests these things to help keep our neighborhood clean and attractive:

- Pick up trash along your regular walking route. Many of you walk regularly for recreation, fitness, or with your furry companion. If, just once a week, you take a small bag with you and pick up trash along the way, the cumulative effect will be obvious.
- Contact the City for bulky item collection (828) 251-1122 or sanitation@ashevillenc.gov when you set items at the curb. Hopefully, someone who can use the item will pick it up, but often items like old mattresses and discarded toilets stay out for days – neither of which contribute favorably to neighborhood appearance.
- Report excess trash along curb to the City of Asheville: http://www.ashevillenc.gov/live/report/trash_issues.htm. City sanitation is usually very quick to respond.
- Keep sidewalks clear. While it's delightful to live in such a charming pedestrian neighborhood, our lush vegetation occasionally translates to hazards along the sidewalks and curbs. Please keep sidewalks and tree-lawn areas (between sidewalk and curb) clear of low-hanging limbs, fallen branches, and excess vegetation to help insure the safety of our many residents and visitors.

Thanks again to all our volunteers, and stay tuned to announcements for the next neighborhood clean-up day!

Lynn Raker, PLA, ASLA
336-596-1263



SMART FINANCIAL PLANNING REQUIRES

**Both the
Head and
the Heart**

Planning your financial future isn't a unilateral brain exercise. We create individualized financial plans for each client by understanding your personal dreams as well as your pragmatic needs. Whether it's a retirement plan, investment strategies or help navigating life's changes, we develop a comprehensive road map for the whole you.



starksfinancial.com | 828.285.8777 | 877.285.RJFS (7537)
440 Montford Avenue, Asheville, NC 28801

Securities offered through Raymond James Financial Services, Inc. Starks Financial Group is not a registered broker/dealer and is independent of Raymond James Financial Services. Securities offered through Raymond James Financial Services, Inc., Member FINRA/SIPC. Investment advisory services offered through Raymond James Financial Services Advisors, Inc.

Resource Directory

House Histories

Learn the story of your house. Who lived there, who owned it and what they did for a living.

- For more information call Sharon at 777-1014

Historic Walking Tours

Stroll the neighborhood or downtown. Walking tours of historic Montford, Riverside Cemetery, Biltmore Village and downtown Asheville, call 777-1014.

Smart Feller Tree Works

- Ira Friedrichs • 545-5503 (NEW cell)
- irafriedrichs@gmail.com.

Down trees got you down? Contact us for all your tree removal and pruning needs! We are locally licensed and insured. Please call for free estimates. Montford references available. Thanks.

Square Peg Construction Inc.

Add beautiful custom woodwork to your historic home: New upgrades like wood paneling, built-in cabinetry, trim, doors, stairs and railings. Small details add big impact! Montford references.

- Call your neighbors, Leslie and David Humphrey 277-5164

fresh * local * affordable

505-3121
233 Montford Ave
Open 7 days/week
11:30am to 10:00pm
ninemileasheville.com

Montford Convenience Store

Your local neighborhood store

Hours:

Monday thru Saturday - 8am to 11pm
Sunday - 9am to 10pm

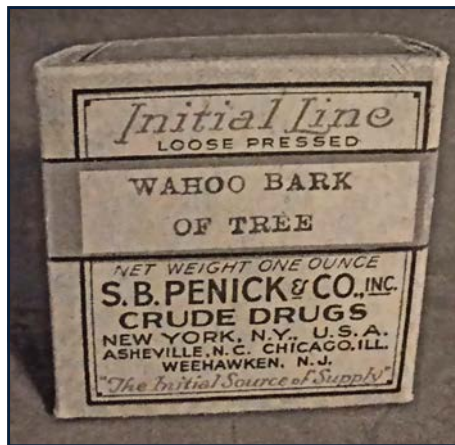
231 Montford Avenue • phone 828-258-1879

Editor note: This article is taken from the Botanical Gardens Newsletter - *New Leaf* Spring 2018. Thanks to Susan Roderick for sharing this.

A Bit of History Hidden in the Gardens

Across the trail from Reed Creek as you approach BGA's Sycamore Meadow is a small plaque, partly hidden by rhododendron, designating the Pennie (sic) Herb Garden. In the early 1960s, S.B. Penick Co. made a \$600 contribution to BGA for a garden to demonstrate the herbaceous plants drug houses like theirs were seeking. Penick was part of the Crude Drug industry, now more commonly called Botanicals, which dealt not in pure compounds but in natural products—plants and plant parts, and the extracts and excretions of plants. Crude drugs were sought for their medicinal, insecticide, flavoring, and cosmetic uses.

S.B. Penick & Company was founded in 1914 in Marion, NC, by 32-year-old Sydnor Barksdale Penick who retained 51% ownership in exchange for a contract—amended as business thrived—



restricting increases in his salary. In 1917, the company opened a warehouse near Lexington Avenue and Walnut Street, relocating in 1923 to Broadway at Catawba; the headquarters had already moved to NYC and would later be in New Jersey. Major company expansions occurred during both World Wars because of shortages in imported botanicals. A 1941 *LIFE* magazine article, illustrated with photographs of the Appalachian collectors and the Asheville warehouse, reported:

“With prices, as in the last war, riding the herb-shortage boom to promise a more than 50-cent daily wage, back-country families are scouring woods, swamps and weed patches to collect and export a list of 224 herbs to the outside world.”

By 1922 Penick was already on the Executive Committee of the American Drug Manufacturers Association, and on its Scientific Section Board of Control for Crude and Milled Drugs; he would serve two terms as President. His company added scientific personnel, research divisions and publications, and antibiotic production. The company also cultivated plants; at one time their Pennsylvania farm was the source of most USA digitalis. S.B. Penick sold their products in boxes, rather than bulk. Marketing and branding slogans included: “*The Initial Source of Supply*,” “*The World’s Largest Botanical Drug House*” and “*Our quality is always higher than our price.*”

Donald Davis notes in *Homeplace Geography*, Penick’s 1929 claim that 85% of all American crude drugs were gathered in southern Appalachia, and Asheville was “the center of this collecting section.” (1) “*Just Like Finding Money! Penick pays high prices for roots and herbs*” ran an ad for suppliers. *Asheville Citizen* newspaper’s report of the 1966 sale of the warehouses states that at S. B. Penick’s peak, 1500 regional “farmers and merchants” shipped products to them, and buyers drove a “75 to 100 mile route to get botanical raw materials from isolated farms.” A former manager assessed the economics as “The mountain folk gave up digging roots to take jobs in WNC’s expanding industrial plants,” but supply depletion also occurred.

Medical Times in 1960 profiled the company and its founder with a report that a steady supply of viburnum bark, even throughout winter, came via a local distiller of corn whiskey: “They came down from the mountain still on Friday nights to meet the community’s weekend demand and, to cover the jugs of mountain dew from the gaze of inquisitive Federal Agents, they used the sorely needed Viburnum Barks.” (2)

In 1966, S.B. Penick closed its Asheville warehouse and deeded 1.5 acres with “affection and interest” to the City of Asheville for \$10 and a promise to convert the site to a public park. (3) This was ultimately accomplished with development of Reed Creek Greenway, which placed signage about the company at its former location just south of Catawba St. Mr. Penick died in 1953; the company remained in the family until sale to an international firm, retaining a connection to botanicals in its production of opioids.



Davis notes, “Historically, one can place blame on the crude-drug and multinational pharmaceutical companies

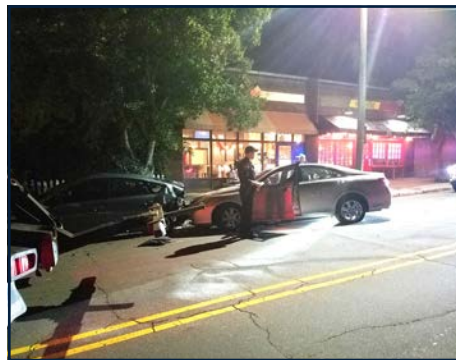
and the collection practices for the decline in some species of mountain plants.” Recent interest in botanicals has encouraged the cultivation of native herbal species, but ongoing collecting and poaching, including of goldenseal, galax, and ginseng, continues to endanger native plants.

-Jane Bramham

- 1) Davis, Donald Edward, *Homeplace Geography: Essays for Appalachia*, Mercer University Press, 2006, pp. 169-174;
- 2) *Medical Times* (vol. 88, No. 4) April 1960;
- 3) *Asheville Citizen*, Penick Co. Departs ‘With Affection’ August 17, 1966

Car Wrecks on Montford Avenue

Runners know the length of Montford Avenue—while appearing level—is really a hill. Despite red lights and traffic calming islands, a driver traveling from downtown can get up quite a “head of steam.” Add drugs or alcohol to the mix and you have a real problem.



Three cars damaged in this pile up this month.



Montford’s designer bus shelter and historic panel destroyed in May.

The Montford Neighborhood Association (MNA) has listened to the community and is exploring solutions to address speeding and drunk driving. **Stay tuned.**

PLEASE SUPPORT OUR ADVERTISERS
They make the newsletter POSSIBLE!



Historic Resources Commission of Asheville and Buncombe County

Montford Action Agenda June 13, 2018

Members present: Chair Bryan Moffitt, William Eakins, Woodard Farmer, Emily Kite, Craig Cline, Ed Flowers, Valeria Watson, Emily Spreng, Amanda Warren, Benjamin Mitchell

Staff present: Alex Cole, Jannice Ashley

Item, Summary and Action

63 Panola Street—Construction of new 2,870 square foot, 2 ½ story primary structure.

Action— Approved with conditions

58 Courtland Avenue—Construction of new 1,108 square foot accessory structure in rear yard.

Action— Approved with conditions

33 Short Street—Removal of one mature Norway spruce tree in front of house; construction of new walkway from front entrance to street.

Action—Approved

117 Flint Street—Replacement of two 6/1, double-hung windows on south elevation with new pair of multi-lite French doors.

Action— Continued

332 Montford Avenue—Renovation of existing one-story accessory structure, including installation of wood lap siding over existing siding, replacement of garage doors, repair existing windows, relocate one window and install new pedestrian door on side elevation.

Action— Approved with conditions

300 Montford Avenue—Construct stone retaining wall at sidewalk, new parking area and two stone retaining walls in rear yard; replace side entry steps on front porch; install new paved walkway to driveway in front and rear yards; remove one oak tree in rear yard; construct new 200 square foot addition and 19'4" x 12' deck on rear elevation; replace two 9/1, double-hung windows on front elevation with decorative stained glass transom window.

Action— Approved with conditions

83 Elizabeth Street—Construction of two-story addition on rear elevation.

Action—Continued

Please refer to the website (www.ashevillenc.gov) for the full approved minutes after the following month's meeting.

Join the Montford listserv. Go to Montford.org, look at the right panel on how to join.



THE DOGWOOD DOCTOR
Specializing in Dogwood and Rose Care

Gene Carter | Asheville, NC 28803
DogwoodDoctor.com | Cell: 828-808-8058
DogwoodDoctor@Gmail.com | Home: 828-252-4416



Historic Resources Commission of Asheville and Buncombe County

Montford Action Agenda July 11, 2018

Members present: Chair Bryan Moffitt, William Eakins, Woodard Farmer, Emily Kite, Craig Cline, Ed Flowers, Valeria Watson, Emily Spreng, Amanda Warren, Benjamin Mitchell, David Carpenter

Staff present: Stacy Merten, Alex Cole, Jannice Ashley

Item, Summary and Action

117 Flint Street—Replacement of two 6/1, double-hung windows on south elevation with new pair of multi-lite French doors.

Action— Approved

58 Courtland Avenue—Construction of two-story addition on rear elevation.

Action— Approved with conditions

240 Pearson Drive—Restoration of primary structure, including removal of non-original addition on north elevation, construction of porte-cochere

on north elevation and porch on rear elevation, replacement of asphalt shingle roof; restoration of accessory structure, including installation of new pedestrian door with shed roof overhang, new garage door and two new windows on south elevation, new pedestrian door and Juliet balcony on east elevation, new window on west elevation, replacement of asphalt shingle roof, installation of 4 skylights on north facing portion of roof; restoration of landscape, including removal of 14 mature trees, construction of new stone retaining with stone pillars wall along front property boundary, installation of new stone walkways in front and side yards installation of new stone firepit area in side yard, installation of new 30' x 12' pool with stone patio in rear yard, installation of sauna structure in rear yard, construction of small tree house in side yard, and expansion of existing driveway.

Action—Continued

Please refer to the website
(www.ashevillenc.gov)

for the full approved minutes after the following month's meeting.

Sidewalk Tripping Hazard Repairs Under Way

Montford is a pedestrian neighborhood. The beautiful historic homes and tree-lined street invite you to leave the car parked. After all, downtown is just minutes away by foot.

However, you should watch your step on some of our aging walkways. The good news is the City is addressing the some of the hazards. Crews are presently working on Montford Avenue replacing irregular sidewalk slabs. Hopefully, street potholes are next.

Questions? http://www.ashevillenc.gov/departments/street_services/maintenance.htm



**SMART
FELLER
TREETWORKS**

ISA BEST OF ASHEVILLE TCAIA Living Wage Certified

828.545.5503 • smartfellertreeworks.com

**SQUARE
PEG**

We're Different

828-277-5164

**FINISH CARPENTRY
CABINETS
DESIGN**

□
Asheville

**THE
OLD TOWN
SALVAGE CO.**

Salvaged doors,
windows, mantles and
unique reclaimed items

BUY · SELL · TRADE

828-216-7175

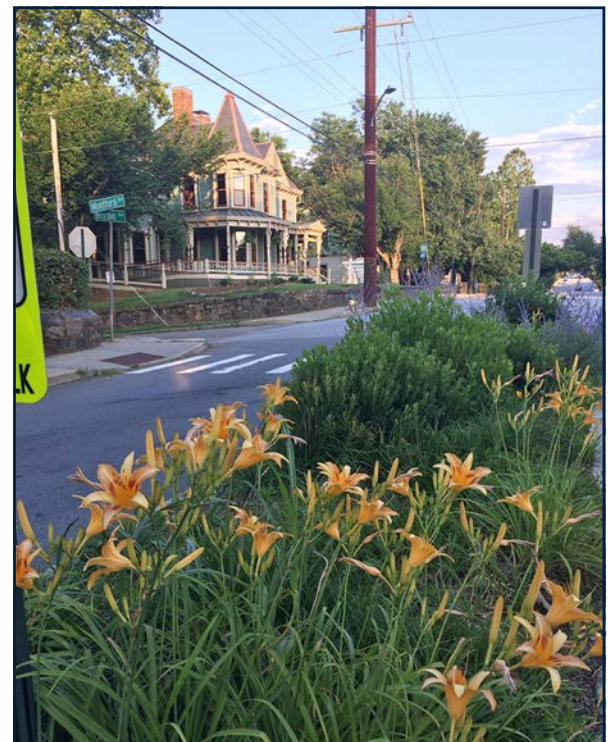
Visit us at
Antique Tobacco Barn
75 Swannanoa River Rd
Asheville, NC 28805

**THE
MIKE MILLER
TEAM**

**The Mike Miller Team
(828) 712-9052**
millerteam@townandmountain.com
www.themikemillerteam.com

"Mike is not about selling or pushing - he is all about earning trust & developing a relationship. He respected my thoughts during the negotiating process & represented us well. As a lifelong Asheville resident Mike had excellent recommendations on folks to help out with inspections, survey, closing attorneys & more (including restaurants & music venues). His team at Town and Mountain Realty is professional and friendly. Going to their office is a cross between visiting a real estate office & visiting someone's home. You cannot go wrong working with Mike Miller!" - Don K.

www.townandmountain.com



A rare quiet moment at sunset on Montford.
Photo courtesy of Susan Roderick.